

Converting Colors

CIELCh(76, 13.887, 11.738)

Have a look what the booklet for
CIELCh(76, 13.887, 11.738) contains.

CIELCh(76, 13.904, 11.739)	3
<i>Conversions</i>	4
<i>Details</i>	6
<i>Harmonies</i>	11
<i>Previews</i>	20
<i>Color Blindness Simulation</i>	23
<i>CSS Examples</i>	26

Color

CIELCh(76, 13.904, 11.739)

Conversions

Conversions Part 1

Format	Color
Hex	D7B3B7
RGB	215, 179, 183
RGB Percent	84%, 70%, 72%
CMY	0.1583, 0.2995, 0.2838
CMYK	0.00, 0.17, 0.15, 0.16
HSL	353°, 31%, 77%
HSV	353°, 17%, 84%
XYZ	52.4691, 49.8872, 51.4641
YIQ	190.2200, 20.1720, 8.8760

Conversions

Conversions Part 2

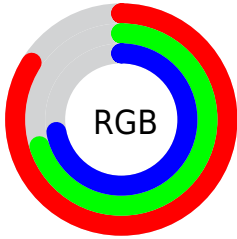
Format	Color
R _Y B	215, 179, 183
Decimal	14136247
CIE Lab	76.00, 13.61, 2.83
CIE LCh	76, 13.904, 11.739
Yxy	49.8872, 0.3411, 0.3243
Android (android.graphics.Color)	4292326327 (0xFFD7B3B7)
YUV	190.2200, -3.5595, 21.7321
Hunter-Lab	70.6309, 8.9971, 6.2409

Details

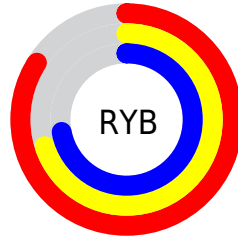
The CIELCh color **76, 13.904, 11.739** is a light color, and the websafe version is hex **CC9999**. A complement of this color would be **83, 12.761, 188.968**, and the grayscale version is **77, 0.009, 296.813**.

A 20% lighter version of the original color is **95, 7.457, 3.903**, and **56, 14.060, 11.689** is the 20% darker color. If you saturate the color by 10%, you get **70, 22.881, 12.946**, and if you desaturate by 10%, it is **82, 5.433, 10.714**.

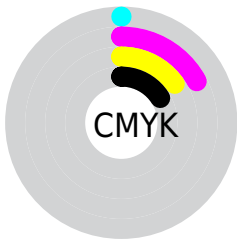
Distribution



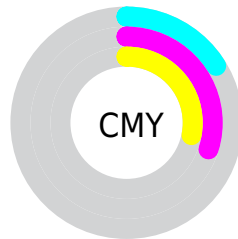
- Red (84%)
- Green (70%)
- Blue (72%)



- Red (84%)
- Yellow (70%)
- Blue (72%)



- Cyan (0%)
- Magenta (17%)
- Yellow (15%)
- Black (16%)



- Cyan (16%)
- Magenta (30%)
- Yellow (28%)

Brightness & Saturation Gradients

These gradients show how the CIELCh color 76, 13.904, 11.739 changes by changing the brightness by 10 percent. The first figure shows a shift by +10% for each color and the second figure -10%.

Similar to the brightness gradients but the following saturation gradients show a change of the CIELCh color 76, 13.904, 11.739 by changing the saturation by 10% instead.

76, 13.904, 11.739

76, 13.904, 11.739

100, 13.904,
11.739

66, 13.904, 11.739

96, 13.904, 11.739

56, 13.904, 11.739

46, 13.904, 11.739

36, 13.904, 11.739

26, 13.904, 11.739

16, 13.904, 11.739

6, 13.904, 11.739

0, 13.904, 11.739

76, 13.904, 11.739

76, 13.904, 11.739

70, 22.881, 12.946

82, 5.433, 10.714

65, 32.300, 14.423

88, 2.510, 190.235

60, 42.011, 16.280

94, 9.946, 189.386

55, 51.773, 18.641

97, 13.533,
198.603

51, 61.266, 21.642

48, 70.156, 25.379

46, 78.163, 29.792

45, 84.979, 34.437

45, 86.953, 35.729

Harmonies

Complementary

The Complementary color scheme is a pair of colors which are on the opposite of each other on the color wheel.



76, 13.904, 11.739



83, 12.761, 188.968

Rectangle

The Rectangle color scheme consists of four colors that form a rectangle on the color wheel.



76, 13.904, 11.739



76, 13.904, 61.739



76, 13.904, 191.739



76, 13.904, 241.739

Sweetspot

The Sweet Spot groups the original color and five complimentary colors.



76, 13.902, 11.746



97, 4.594, 10.530



77, 22.515, 322.033



51, 3.141, 10.608



0, 0.000, 0.000



53, 0.007, 296.813

Same Dimension

The Same Dimension uses a secret algorithm to generate beautiful new colors.



76, 13.902, 11.746



87, 19.279, 12.132



79, 11.284, 60.219



42, 4.590, 10.984



35, 72.735, 34.983



5, 21.971, 14.815

Inverse Universe

The Inverse Universe completely reimagines the original color for something new.



76, 13.902, 11.746



87, 19.279, 12.132



80, 10.465, 243.839



42, 4.590, 10.984



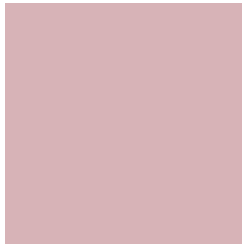
35, 72.735, 34.983



5, 21.971, 14.815

Previews

White Background



This preview shows how the CIELCh color 76, 13.904, 11.739 looks on a white background.

Color Contrast Check

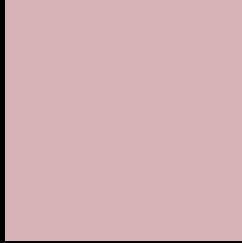
Large Text (above 18pt) WCAG AA × Fail

Any Text WCAG AA × Fail

Large Text (above 18pt) WCAG AAA × Fail

Any Text WCAG AAA × Fail

Black Background



This preview shows how the CIELCh color 76, 13.904, 11.739 looks on a black background.

Color Contrast Check

Large Text (above 18pt) WCAG AA ✓ Pass

Any Text WCAG AA ✓ Pass

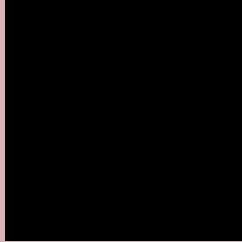
Large Text (above 18pt) WCAG AAA ✓ Pass

Any Text WCAG AAA ✓ Pass

If you want to check with other color combinations, try the [Color Contrast Checker](#).

CIELCh 76, 13.904, 11.739

Background



This preview shows how black text looks on a background with the CIELCh color 76, 13.904, 11.739.

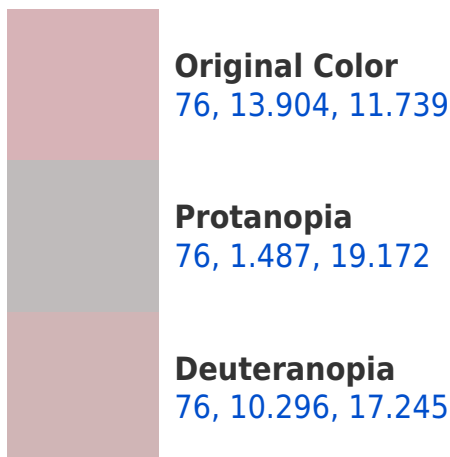


This preview shows how white text looks on a background with the CIELCh color 76, 13.904, 11.739.

Color Blindness Simulation

Color vision deficiency is a very complex topic, and I could not describe the different causes any better than Wikipedia does, so if you want to learn more, you should check out their [article about color blindness](#).

Dichromacy





Tritanopia
76, 16.457, 353.756

Trichromacy



Original Color
76, 13.904, 11.739

Protanomaly
76, 6.046, 14.738

Deuteranomaly
76, 11.489, 15.000

Tritanomaly
76, 14.965, 359.759

Monochromacy



Original Color
76, 13.904, 11.739

Achromatopsia
77, 0.009, 296.813

Achromatomaly
77, 4.900, 13.431

CSS Examples

Text

The CSS property to change the color of the text to CIELCh 76, 13.904, 11.739 is called "color". The color property can be set on classes, ids or directly on the HTML element.

This example shows how text in the color `rgb(215, 179, 183)` looks like.

```
.text, #text, p{  
    color:rgb(215, 179, 183)  
}
```

If you want to add a text shadow in that color use the text-shadow property, you can generate a text shadow directly with our [CSS Text Shadow Generator](#).

Here you see how black text with a 4 pixel rgb(215, 179, 183) colored shadow looks like.

```
.shadow{ text-shadow: 4px 4px 2px rgb(215, 179, 183) }
```

Border

The CSS property to change the border of an element to CIELCh 76, 13.904, 11.739 is called "border". The border property can be set on classes, ids or directly on the HTML element.

This example shows the color as border, it can be applied via the CSS property "border" or "border-color".

```
.border, #border, table{ border:4px solid rgb(215, 179, 183) }
```

If only the border color should be changed use the property `border-color`.

```
.border{ border-color:rgb(215, 179, 183) }
```

If you want to add a box shadow in that color use:

Here you see how a box with a 4 pixel `rgb(215, 179, 183)` colored shadow looks like.

```
.boxshadow{ -moz-box-shadow:4px 4px 4px  
4px rgb(215, 179, 183); -webkit-box-  
shadow:4px 4px 4px 4px rgb(215, 179, 183);  
box-shadow:4px 4px 4px 4px rgb(215, 179,  
183) }
```

Background

The CSS property to change the background color of an element to CIELCh 76, 13.904, 11.739 is called "background". The background property can be set on classes, ids or directly on the HTML element.

```
.background, #background, body{  
background: rgb(215, 179, 183) }
```

If only the background color should be changed can be used:

```
.background{ background-color: rgb(215,  
179, 183) }
```

This example shows the color as background, it is applied via the CSS property "background".

To optimize and compress your CSS code, you can use our [online CSS compressor and optimizer](#) based on csstidy. If you want to create a linear or radial gradient as background or border, check our [CSS Gradient Generator](#).

Hey! You found this booklet interesting? Support Converting Colors with the new Membership Option!

The pro membership hides all ads, plus gives you double the colors in the color bucket, and more awesome pro features!

[Learn more, Memberships starting at \\$2.50/m!](#)

**Follow me
on Twitter!**

@ConvertingColor