

Converting Colors

CIELCh(76, 13.947, 39.763)

Have a look what the booklet for
CIELCh(76, 13.947, 39.763) contains.

CIELCh(76, 14.182, 40.156)	3
<i>Conversions</i>	4
<i>Details</i>	6
<i>Harmonies</i>	11
<i>Previews</i>	20
<i>Color Blindness Simulation</i>	23
<i>CSS Examples</i>	26

Color

CIELCh(76, 14.182, 40.156)

Conversions

Conversions Part 1

Format	Color
Hex	D6B4AB
RGB	214, 180, 171
RGB Percent	84%, 71%, 67%
CMY	0.1607, 0.2940, 0.3294
CMYK	0.00, 0.16, 0.20, 0.16
HSL	13°, 34%, 75%
HSV	13°, 20%, 84%
XYZ	51.4118, 49.8872, 45.4545
YIQ	189.1400, 23.1530, 4.4090

Conversions

Conversions Part 2

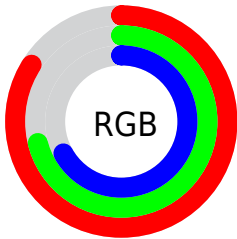
Format	Color
R _Y B	214, 182, 171
Decimal	14070955
CIE Lab	76.00, 10.84, 9.15
CIE LCh	76, 14.182, 40.156
Yxy	49.8872, 0.3503, 0.3399
Android (android.graphics.Color)	4292261035 (0xFFD6B4AB)
YUV	189.1400, -8.9430, 21.8022
Hunter-Lab	70.6309, 6.3248, 11.2856

Details

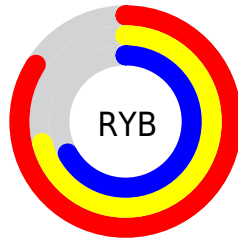
The CIELCh color **76, 14.182, 40.156** is a light color, and the websafe version is hex **CC9999**. A complement of this color would be **80, 12.433, 221.450**, and the grayscale version is **77, 0.009, 296.813**.

A 20% lighter version of the original color is **95, 8.616, 56.107**, and **56, 14.283, 39.173** is the 20% darker color. If you saturate the color by 10%, you get **71, 22.143, 40.170**, and if you desaturate by 10%, it is **81, 6.835, 40.259**.

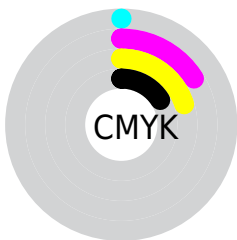
Distribution



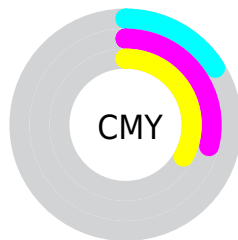
- Red (84%)
- Green (71%)
- Blue (67%)



- Red (84%)
- Yellow (71%)
- Blue (67%)



- Cyan (0%)
- Magenta (16%)
- Yellow (20%)
- Black (16%)



- Cyan (16%)
- Magenta (29%)
- Yellow (33%)


Brightness & Saturation Gradients

These gradients show how the CIELCh color 76, 14.182, 40.156 changes by changing the brightness by 10 percent. The first figure shows a shift by +10% for each color and the second figure -10%.

Similar to the brightness gradients but the following saturation gradients show a change of the CIELCh color 76, 14.182, 40.156 by changing the saturation by 10% instead.

 76, 14.182, 40.156

 76, 14.182, 40.156

 100, 14.182,
40.156

 66, 14.182, 40.156

 96, 14.182, 40.156

 56, 14.182, 40.156

 46, 14.182, 40.156


 36, 14.182, 40.156

 26, 14.182, 40.156

 16, 14.182, 40.156

 6, 14.182, 40.156

 0, 14.182, 40.156

 76, 14.182, 40.156

 76, 14.182, 40.156

71, 22.143, 40.170

81, 6.835, 40.259

67, 30.755, 40.328

86, 0.058, 30.754

63, 40.014, 40.679

90, 6.209, 220.967

59, 49.858, 41.251

95, 11.786,
217.394

55, 60.114, 42.033

97, 13.727,
198.590

52, 70.373, 42.911

49, 79.718, 43.531

47, 86.882, 43.555

Harmonies

Complementary

The Complementary color scheme is a pair of colors which are on the opposite of each other on the color wheel.



76, 14.182, 40.156



80, 12.433, 221.450

Rectangle

The Rectangle color scheme consists of four colors that form a rectangle on the color wheel.



76, 14.182, 40.156



76, 14.182, 90.156



76, 14.182, 220.156



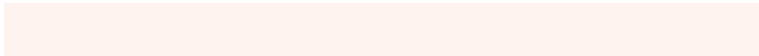
76, 14.182, 270.156

Sweetspot

The Sweet Spot groups the original color and five complimentary colors.



76, 14.181, 40.166



97, 4.608, 40.285



75, 24.288, 331.788



51, 3.065, 40.285



0, 0.000, 0.000



53, 0.007, 296.813

Same Dimension

The Same Dimension uses a secret algorithm to generate beautiful new colors.



76, 14.181, 40.166



87, 19.867, 40.152



81, 16.676, 91.192



43, 3.836, 40.266



38, 73.070, 43.947



6, 19.308, 31.329

Inverse Universe

The Inverse Universe completely reimagines the original color for something new.



80, 12.433, 221.450



93, 16.896, 221.703



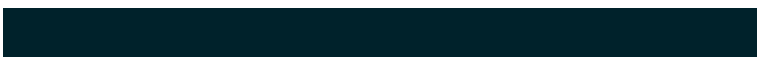
75, 16.732, 276.515



44, 3.620, 220.978



52, 32.692, 237.352



12, 12.652, 229.055

Previews

White Background



This preview shows how the CIELCh color 76, 14.182, 40.156 looks on a white background.

Color Contrast Check

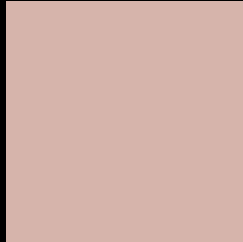
Large Text (above 18pt) WCAG AA × Fail

Any Text WCAG AA × Fail

Large Text (above 18pt) WCAG AAA × Fail

Any Text WCAG AAA × Fail

Black Background



This preview shows how the CIE LCh color 76, 14.182, 40.156 looks on a black background.

Color Contrast Check

Large Text (above 18pt) WCAG AA ✓ Pass

Any Text WCAG AA ✓ Pass

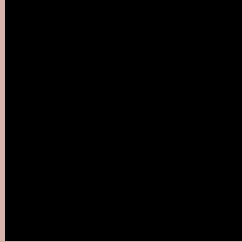
Large Text (above 18pt) WCAG AAA ✓ Pass

Any Text WCAG AAA ✓ Pass

If you want to check with other color combinations, try the [Color Contrast Checker](#).

CIELCh 76, 14.182, 40.156

Background



This preview shows how black text looks on a background with the CIELCh color 76, 14.182, 40.156.



This preview shows how white text looks on a background with the CIELCh color 76, 14.182, 40.156.

Color Blindness Simulation

Color vision deficiency is a very complex topic, and I could not describe the different causes any better than Wikipedia does, so if you want to learn more, you should check out their [article about color blindness](#).

Dichromacy



Original Color

76, 14.182, 40.156

Protanopia

76, 6.952, 86.957

Deuteranopia

76, 13.276, 43.948



Tritanopia
76, 16.457, 353.756

Trichromacy



Original Color
76, 14.182, 40.156

Protanomaly
76, 8.461, 58.997

Deuteranomaly
76, 13.644, 43.295

Tritanomaly
76, 14.447, 7.817

Monochromacy



Original Color
76, 14.182, 40.156

Achromatopsia
77, 0.009, 296.813

Achromatomaly
76, 5.003, 44.969

CSS Examples

Text

The CSS property to change the color of the text to CIELCh 76, 14.182, 40.156 is called "color". The color property can be set on classes, ids or directly on the HTML element.

This example shows how text in the color `rgb(214, 180, 171)` looks like.

```
.text, #text, p{  
    color:rgb(214, 180, 171)  
}
```

If you want to add a text shadow in that color use the text-shadow property, you can generate a text shadow directly with our [CSS Text Shadow Generator](#).

Here you see how black text with a 4 pixel rgb(214, 180, 171) colored shadow looks like.

```
.shadow{ text-shadow: 4px 4px 2px rgb(214, 180, 171) }
```

Border

The CSS property to change the border of an element to CIELCh 76, 14.182, 40.156 is called "border". The border property can be set on classes, ids or directly on the HTML element.

This example shows the color as border, it can be applied via the CSS property "border" or "border-color".

```
.border, #border, table{ border:4px solid rgb(214, 180, 171) }
```

If only the border color should be changed use the property `border-color`.

```
.border{ border-color:rgb(214, 180, 171) }
```

If you want to add a box shadow in that color use:

Here you see how a box with a 4 pixel `rgb(214, 180, 171)` colored shadow looks like.

```
.boxshadow{ -moz-box-shadow:4px 4px 4px  
4px rgb(214, 180, 171); -webkit-box-  
shadow:4px 4px 4px 4px rgb(214, 180, 171);  
box-shadow:4px 4px 4px 4px rgb(214, 180,  
171) }
```

Background

The CSS property to change the background color of an element to CIELCh 76, 14.182, 40.156 is called "background". The background property can be set on classes, ids or directly on the HTML element.

```
.background, #background, body{  
background: rgb(214, 180, 171) }
```

If only the background color should be changed can be used:

```
.background{ background-color: rgb(214,  
180, 171) }
```

This example shows the color as background, it is applied via the CSS property "background".

To optimize and compress your CSS code, you can use our [online CSS compressor and optimizer](#) based on csstidy. If you want to create a linear or radial gradient as background or border, check our [CSS Gradient Generator](#).

Hey! You found this booklet interesting? Support Converting Colors with the new Membership Option!

The pro membership hides all ads, plus gives you double the colors in the color bucket, and more awesome pro features!

[Learn more, Memberships starting at \\$2.50/m!](#)

**Follow me
on Twitter!**

@ConvertingColor