

Converting Colors

CIELCh(76, 15.456, 20.681)

Have a look what the booklet for
CIELCh(76, 15.456, 20.681) contains.

CIELCh(76, 15.456, 20.681)	3
<i>Conversions</i>	4
<i>Details</i>	6
<i>Harmonies</i>	11
<i>Previews</i>	20
<i>Color Blindness Simulation</i>	23
<i>CSS Examples</i>	26

Color

CIELCh(76, 15.456, 20.681)

Conversions

Conversions Part 1

Format	Color
Hex	DAB2B2
RGB	218, 178, 178
RGB Percent	85%, 70%, 70%
CMY	0.1456, 0.3024, 0.3024
CMYK	0.00, 0.18, 0.18, 0.15
HSL	0°, 35%, 78%
HSV	0°, 18%, 85%
XYZ	52.7948, 49.8872, 48.9018
YIQ	189.9600, 23.8400, 8.4800

Conversions

Conversions Part 2

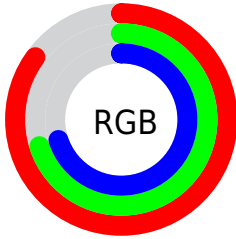
Format	Color
R _Y B	218, 178, 178
Decimal	14332594
CIE Lab	76.00, 14.46, 5.46
CIE LCh	76, 15.456, 20.681
Yxy	49.8872, 0.3483, 0.3291
Android (android.graphics.Color)	4292522674 (0xFFDAB2B2)
YUV	189.9600, -5.8963, 24.5911
Hunter-Lab	70.6309, 9.8201, 8.3918

Details

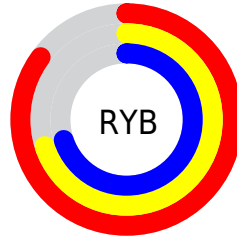
The CIELCh color **76, 15.456, 20.681** is a light color, and the websafe version is hex **CC9999**. A complement of this color would be **84, 13.707, 198.487**, and the grayscale version is **77, 0.009, 296.813**.

A 20% lighter version of the original color is **94, 7.572, 19.841**, and **56, 15.774, 21.115** is the 20% darker color. If you saturate the color by 10%, you get **70, 24.810, 21.725**, and if you desaturate by 10%, it is **82, 6.763, 19.853**.

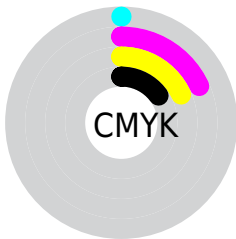
Distribution



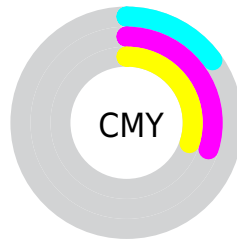
- Red (85%)
- Green (70%)
- Blue (70%)



- Red (85%)
- Yellow (70%)
- Blue (70%)



- Cyan (0%)
- Magenta (18%)
- Yellow (18%)
- Black (15%)



- Cyan (15%)
- Magenta (30%)
- Yellow (30%)


Brightness & Saturation Gradients

These gradients show how the CIELCh color 76, 15.456, 20.681 changes by changing the brightness by 10 percent. The first figure shows a shift by +10% for each color and the second figure -10%.

Similar to the brightness gradients but the following saturation gradients show a change of the CIELCh color 76, 15.456, 20.681 by changing the saturation by 10% instead.

 76, 15.456, 20.681

 76, 15.456, 20.681

 100, 15.456,
20.681

 66, 15.456, 20.681

 96, 15.456, 20.681

 56, 15.456, 20.681

 46, 15.456, 20.681

 36, 15.456, 20.681

 26, 15.456, 20.681

 16, 15.456, 20.681

 6, 15.456, 20.681

 0, 15.456, 20.681

 76, 15.456, 20.681

 76, 15.456, 20.681

70, 24.810, 21.725

82, 6.763, 19.853

65, 34.791, 23.069

88, 1.277, 199.790

60, 45.276, 24.825

94, 8.710, 198.917

55, 56.046, 27.106

97, 12.490,
198.672

51, 66.771, 29.991

48, 76.990, 33.422

47, 85.882, 36.954

46, 91.947, 39.593

45, 92.860, 40.001

Harmonies

Complementary

The Complementary color scheme is a pair of colors which are on the opposite of each other on the color wheel.



76, 15.456, 20.681



84, 13.707, 198.487

Rectangle

The Rectangle color scheme consists of four colors that form a rectangle on the color wheel.



76, 15.456, 20.681



76, 15.456, 70.681



76, 15.456, 200.681



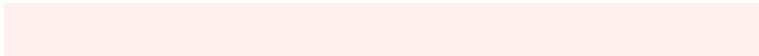
76, 15.456, 250.681

Sweetspot

The Sweet Spot groups the original color and five complimentary colors.



76, 15.454, 20.689



96, 5.467, 19.665



77, 25.828, 325.437



51, 3.636, 19.720



0, 0.000, 0.000



53, 0.007, 296.813

Same Dimension

The Same Dimension uses a secret algorithm to generate beautiful new colors.



76, 15.454, 20.689



85, 21.361, 21.056



81, 13.129, 73.135



43, 4.639, 19.939



36, 78.234, 39.929



5, 23.839, 20.273

Inverse Universe

The Inverse Universe completely reimagines the original color for something new.



84, 13.707, 198.487



96, 18.434, 198.295



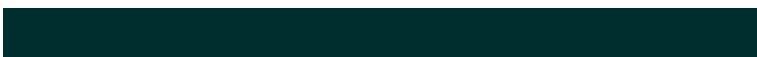
79, 12.515, 258.035



45, 4.370, 198.981



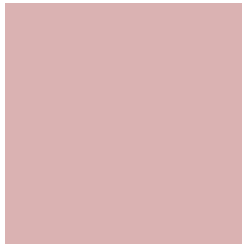
64, 37.526, 196.401



16, 15.072, 196.399

Previews

White Background



This preview shows how the CIELCh color 76, 15.456, 20.681 looks on a white background.

Color Contrast Check

Large Text (above 18pt) WCAG AA × Fail

Any Text WCAG AA × Fail

Large Text (above 18pt) WCAG AAA × Fail

Any Text WCAG AAA × Fail

Black Background



This preview shows how the CIELCh color 76, 15.456, 20.681 looks on a black background.

Color Contrast Check

Large Text (above 18pt) WCAG AA ✓ Pass

Any Text WCAG AA ✓ Pass

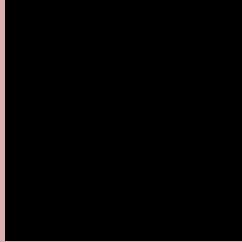
Large Text (above 18pt) WCAG AAA ✓ Pass

Any Text WCAG AAA ✓ Pass

If you want to check with other color combinations, try the [Color Contrast Checker](#).

CIELCh 76, 15.456, 20.681

Background



This preview shows how black text looks on a background with the CIELCh color 76, 15.456, 20.681.



This preview shows how white text looks on a background with the CIELCh color 76, 15.456, 20.681.

Color Blindness Simulation

Color vision deficiency is a very complex topic, and I could not describe the different causes any better than Wikipedia does, so if you want to learn more, you should check out their [article about color blindness](#).

Dichromacy



Original Color

76, 15.456, 20.681

Protanopia

76, 2.832, 68.510

Deuteranopia

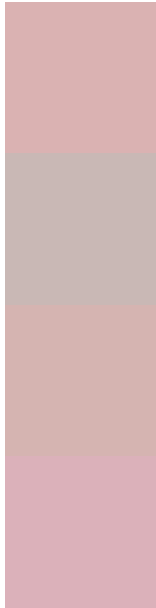
76, 11.386, 31.062



Tritanopia

76, 17.844, 356.177

Trichromacy



Original Color
76, 15.456, 20.681

Protanomaly
76, 6.644, 33.813

Deuteranomaly
76, 12.850, 27.556

Tritanomaly
76, 16.661, 4.096

Monochromacy



Original Color
76, 15.456, 20.681

Achromatopsia
77, 0.009, 296.813

Achromatomaly
77, 5.256, 19.733

CSS Examples

Text

The CSS property to change the color of the text to CIELCh 76, 15.456, 20.681 is called "color". The color property can be set on classes, ids or directly on the HTML element.

This example shows how text in the color `rgb(218, 178, 178)` looks like.

```
.text, #text, p{  
    color:rgb(218, 178, 178)  
}
```

If you want to add a text shadow in that color use the text-shadow property, you can generate a text shadow directly with our [CSS Text Shadow Generator](#).

Here you see how black text with a 4 pixel rgb(218, 178, 178) colored shadow looks like.

```
.shadow{ text-shadow: 4px 4px 2px rgb(218, 178, 178) }
```

Border

The CSS property to change the border of an element to CIELCh 76, 15.456, 20.681 is called "border". The border property can be set on classes, ids or directly on the HTML element.

This example shows the color as border, it can be applied via the CSS property "border" or "border-color".

```
.border, #border, table{ border:4px solid rgb(218, 178, 178) }
```

If only the border color should be changed use the property `border-color`.

```
.border{ border-color:rgb(218, 178, 178) }
```

If you want to add a box shadow in that color use:

Here you see how a box with a 4 pixel `rgb(218, 178, 178)` colored shadow looks like.

```
.boxshadow{ -moz-box-shadow:4px 4px 4px  
4px rgb(218, 178, 178); -webkit-box-  
shadow:4px 4px 4px 4px rgb(218, 178, 178);  
box-shadow:4px 4px 4px 4px rgb(218, 178,  
178) }
```

Background

The CSS property to change the background color of an element to CIELCh 76, 15.456, 20.681 is called "background". The background property can be set on classes, ids or directly on the HTML element.

```
.background, #background, body{  
background: rgb(218, 178, 178) }
```

If only the background color should be changed can be used:

```
.background{ background-color: rgb(218,  
178, 178) }
```

This example shows the color as background, it is applied via the CSS property "background".

To optimize and compress your CSS code, you can use our [online CSS compressor and optimizer](#) based on csstidy. If you want to create a linear or radial gradient as background or border, check our [CSS Gradient Generator](#).

Hey! You found this booklet interesting? Support Converting Colors with the new Membership Option!

The pro membership hides all ads, plus gives you double the colors in the color bucket, and more awesome pro features!

[Learn more, Memberships starting at \\$2.50/m!](#)

**Follow me
on Twitter!**

@ConvertingColor