

Converting Colors

CIELCh(76, 15.878, 35.440)

Have a look what the booklet for
CIELCh(76, 15.878, 35.440) contains.

CIELCh(76, 15.921, 36.087)	3
<i>Conversions</i>	4
<i>Details</i>	6
<i>Harmonies</i>	11
<i>Previews</i>	20
<i>Color Blindness Simulation</i>	23
<i>CSS Examples</i>	26

Color

CIELCh(76, 15.921, 36.087)

Conversions

Conversions Part 1

Format	Color
Hex	DAB3AB
RGB	218, 179, 171
RGB Percent	85%, 70%, 67%
CMY	0.1465, 0.2993, 0.3307
CMYK	0.00, 0.18, 0.22, 0.15
HSL	10°, 39%, 76%
HSV	10°, 22%, 85%
XYZ	52.1830, 49.8872, 45.2431
YIQ	189.7490, 25.8120, 5.7800

Conversions

Conversions Part 2

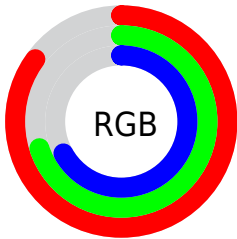
Format	Color
R _Y B	218, 181, 171
Decimal	14332843
CIE Lab	76.00, 12.87, 9.38
CIE LCh	76, 15.921, 36.087
Yxy	49.8872, 0.3542, 0.3386
Android (android.graphics.Color)	4292522923 (0xFFDAB3AB)
YUV	189.7490, -9.2433, 24.7761
Hunter-Lab	70.6309, 8.2739, 11.4630

Details

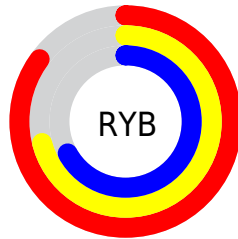
The CIELCh color **76, 15.921, 36.087** is a light color, and the websafe version is hex **CC9999**. A complement of this color would be **82, 13.753, 216.619**, and the grayscale version is **77, 0.009, 296.813**.

A 20% lighter version of the original color is **94, 8.631, 51.981**, and **56, 15.763, 35.448** is the 20% darker color. If you saturate the color by 10%, you get **71, 24.295, 36.347**, and if you desaturate by 10%, it is **81, 8.194, 35.977**.

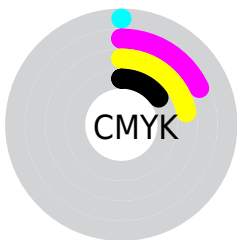
Distribution



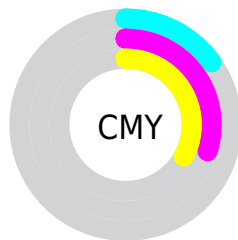
- Red (85%)
- Green (70%)
- Blue (67%)



- Red (85%)
- Yellow (71%)
- Blue (67%)



- Cyan (0%)
- Magenta (18%)
- Yellow (22%)
- Black (15%)



- Cyan (15%)
- Magenta (30%)
- Yellow (33%)

Brightness & Saturation Gradients

These gradients show how the CIELCh color 76, 15.921, 36.087 changes by changing the brightness by 10 percent. The first figure shows a shift by +10% for each color and the second figure -10%.

Similar to the brightness gradients but the following saturation gradients show a change of the CIELCh color 76, 15.921, 36.087 by changing the saturation by 10% instead.

76, 15.921, 36.087

76, 15.921, 36.087

100, 15.921,
36.087

66, 15.921, 36.087

96, 15.921, 36.087

56, 15.921, 36.087

46, 15.921, 36.087

36, 15.921, 36.087

26, 15.921, 36.087

16, 15.921, 36.087

6, 15.921, 36.087

0, 15.921, 36.087

76, 15.921, 36.087

76, 15.921, 36.087

71, 24.295, 36.347

81, 8.194, 35.977

66, 33.342, 36.790

86, 1.075, 35.536

62, 43.037, 37.471

91, 5.495, 216.307

58, 53.289, 38.427

96, 11.324,
209.474

54, 63.874, 39.648

97, 12.561,
198.667

51, 74.309, 40.996

49, 83.515, 42.034

47, 89.386, 42.429

Harmonies

Complementary

The Complementary color scheme is a pair of colors which are on the opposite of each other on the color wheel.



76, 15.921, 36.087



82, 13.753, 216.619

Rectangle

The Rectangle color scheme consists of four colors that form a rectangle on the color wheel.



76, 15.921, 36.087



76, 15.921, 86.087



76, 15.921, 216.087



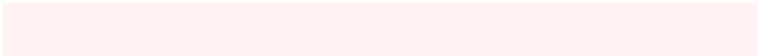
76, 15.921, 266.087

Sweetspot

The Sweet Spot groups the original color and five complimentary colors.



76, 15.920, 36.096



97, 4.716, 35.914



75, 27.084, 330.709



51, 3.137, 35.926



0, 0.000, 0.000



53, 0.007, 296.813

Same Dimension

The Same Dimension uses a secret algorithm to generate beautiful new colors.



76, 15.920, 36.096



85, 22.235, 36.192



82, 17.633, 88.374



43, 4.004, 35.958



38, 75.091, 42.758



7, 21.320, 29.495

Inverse Universe

The Inverse Universe completely reimagines the original color for something new.



82, 13.753, 216.619



93, 18.539, 216.809



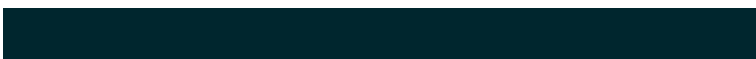
75, 17.549, 274.249



45, 3.771, 216.320



55, 32.615, 228.901



13, 13.140, 222.586

Previews

White Background



This preview shows how the CIELCh color 76, 15.921, 36.087 looks on a white background.

Color Contrast Check

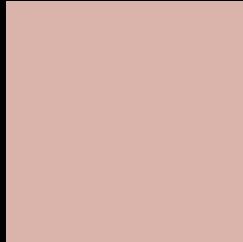
Large Text (above 18pt) WCAG AA × Fail

Any Text WCAG AA × Fail

Large Text (above 18pt) WCAG AAA × Fail

Any Text WCAG AAA × Fail

Black Background



This preview shows how the CIE LCh color 76, 15.921, 36.087 looks on a black background.

Color Contrast Check

Large Text (above 18pt) WCAG AA ✓ Pass

Any Text WCAG AA ✓ Pass

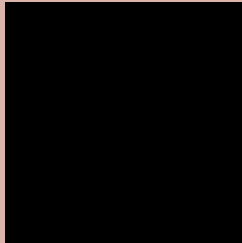
Large Text (above 18pt) WCAG AAA ✓ Pass

Any Text WCAG AAA ✓ Pass

If you want to check with other color combinations, try the [Color Contrast Checker](#).

CIELCh 76, 15.921, 36.087

Background



This preview shows how black text looks on a background with the CIELCh color 76, 15.921, 36.087.

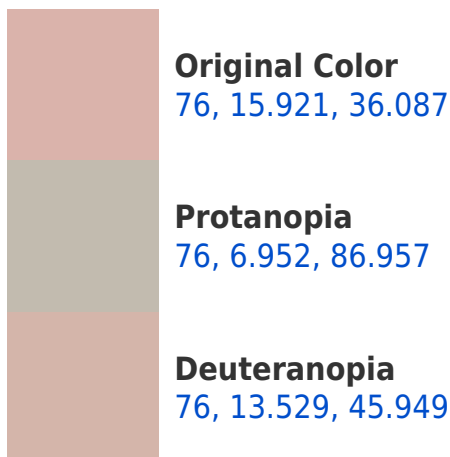


This preview shows how white text looks on a background with the CIELCh color 76, 15.921, 36.087.

Color Blindness Simulation

Color vision deficiency is a very complex topic, and I could not describe the different causes any better than Wikipedia does, so if you want to learn more, you should check out their [article about color blindness](#).

Dichromacy





Tritanopia
76, 18.008, 358.307

Trichromacy



Original Color
76, 15.921, 36.087

Protanomaly
76, 9.422, 58.443

Deuteranomaly
76, 14.404, 42.092

Tritanomaly
76, 16.306, 11.392

Monochromacy



Original Color
76, 15.921, 36.087

Achromatopsia
77, 0.009, 296.813

Achromatomaly
76, 5.524, 36.617

CSS Examples

Text

The CSS property to change the color of the text to CIELCh 76, 15.921, 36.087 is called "color". The color property can be set on classes, ids or directly on the HTML element.

This example shows how text in the color `rgb(218, 179, 171)` looks like.

```
.text, #text, p{  
    color:rgb(218, 179, 171)  
}
```

If you want to add a text shadow in that color use the text-shadow property, you can generate a text shadow directly with our [CSS Text Shadow Generator](#).

Here you see how black text with a 4 pixel rgb(218, 179, 171) colored shadow looks like.

```
.shadow{ text-shadow: 4px 4px 2px rgb(218, 179, 171) }
```

Border

The CSS property to change the border of an element to CIELCh 76, 15.921, 36.087 is called "border". The border property can be set on classes, ids or directly on the HTML element.

This example shows the color as border, it can be applied via the CSS property "border" or "border-color".

```
.border, #border, table{ border:4px solid rgb(218, 179, 171) }
```

If only the border color should be changed use the property `border-color`.

```
.border{ border-color:rgb(218, 179, 171) }
```

If you want to add a box shadow in that color use:

Here you see how a box with a 4 pixel `rgb(218, 179, 171)` colored shadow looks like.

```
.boxshadow{ -moz-box-shadow:4px 4px 4px  
4px rgb(218, 179, 171); -webkit-box-  
shadow:4px 4px 4px 4px rgb(218, 179, 171);  
box-shadow:4px 4px 4px 4px rgb(218, 179,  
171) }
```

Background

The CSS property to change the background color of an element to CIELCh 76, 15.921, 36.087 is called "background". The background property can be set on classes, ids or directly on the HTML element.

```
.background, #background, body{  
background: rgb(218, 179, 171) }
```

If only the background color should be changed can be used:

```
.background{ background-color: rgb(218,  
179, 171) }
```

This example shows the color as background, it is applied via the CSS property "background".

To optimize and compress your CSS code, you can use our [online CSS compressor and optimizer](#) based on csstidy. If you want to create a linear or radial gradient as background or border, check our [CSS Gradient Generator](#).

Hey! You found this booklet interesting? Support Converting Colors with the new Membership Option!

The pro membership hides all ads, plus gives you double the colors in the color bucket, and more awesome pro features!

[Learn more, Memberships starting at \\$2.50/m!](#)

**Follow me
on Twitter!**

@ConvertingColor