

Converting Colors

CIELCh(76, 17.052, 54.521)

Have a look what the booklet for
CIELCh(76, 17.052, 54.521) contains.

CIELCh(76, 17.052, 54.521)	3
<i>Conversions</i>	4
<i>Details</i>	6
<i>Harmonies</i>	11
<i>Previews</i>	20
<i>Color Blindness Simulation</i>	23
<i>CSS Examples</i>	26

Color

CIELCh(76, 17.052, 54.521)

Conversions

Conversions Part 1

Format	Color
Hex	D7B4A2
RGB	215, 180, 162
RGB Percent	84%, 71%, 64%
CMY	0.1556, 0.2929, 0.3635
CMYK	0.00, 0.16, 0.25, 0.16
HSL	20°, 40%, 74%
HSV	20°, 25%, 84%
XYZ	51.0559, 49.8872, 41.2656
YIQ	188.4130, 26.6380, 1.8220

Conversions

Conversions Part 2

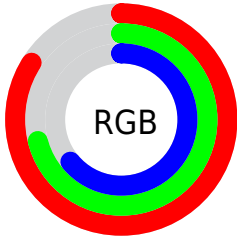
Format	Color
RYB	215, 189, 162
Decimal	14136482
CIELab	76.00, 9.90, 13.89
CIElCh	76, 17.052, 54.521
Yxy	49.8872, 0.3590, 0.3508
Android (android.graphics.Color)	4292326562 (0xFFD7B4A2)
YUV	188.4130, -13.0216, 23.3168
Hunter-Lab	70.6309, 5.4255, 14.8018

Details

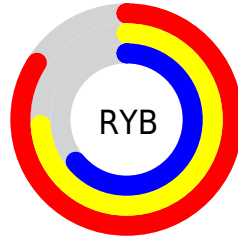
The CIELCh color $76, 17.052, 54.521$ is a light color, and the websafe version is hex `CC9999`. A complement of this color would be $78, 14.943, 239.203$, and the grayscale version is $77, 0.009, 296.813$.

A 20% lighter version of the original color is $94, 12.015, 73.542$, and $56, 17.371, 54.151$ is the 20% darker color. If you saturate the color by 10%, you get $72, 24.877, 53.851$, and if you desaturate by 10%, it is $80, 9.766, 55.260$.

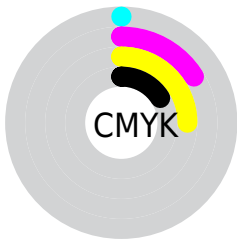
Distribution



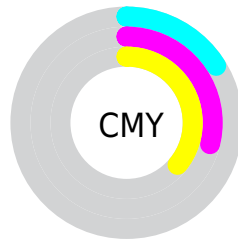
- Red (84%)
- Green (71%)
- Blue (64%)



- Red (84%)
- Yellow (74%)
- Blue (64%)



- Cyan (0%)
- Magenta (16%)
- Yellow (25%)
- Black (16%)



- Cyan (16%)
- Magenta (29%)
- Yellow (36%)

Brightness & Saturation Gradients

These gradients show how the CIELCh color 76, 17.052, 54.521 changes by changing the brightness by 10 percent. The first figure shows a shift by +10% for each color and the second figure -10%.

Similar to the brightness gradients but the following saturation gradients show a change of the CIELCh color 76, 17.052, 54.521 by changing the saturation by 10% instead.

76, 17.052, 54.521

76, 17.052, 54.521

100, 17.052,
54.521

66, 17.052, 54.521

96, 17.052, 54.521

56, 17.052, 54.521

46, 17.052, 54.521

36, 17.052, 54.521

26, 17.052, 54.521

16, 17.052, 54.521

6, 17.052, 54.521

0, 17.052, 54.521

76, 17.052, 54.521

76, 17.052, 54.521

72, 24.877, 53.851

80, 9.766, 55.260

68, 33.268, 53.248

84, 2.978, 55.938

65, 42.213, 52.730

88, 3.362, 237.088

61, 51.621, 52.285

93, 9.304, 237.831

58, 61.245, 51.841

96, 12.192,
207.405

55, 70.505, 51.202

97, 13.306,
198.617

52, 78.254, 49.940

51, 81.740, 49.110

Harmonies

Complementary

The Complementary color scheme is a pair of colors which are on the opposite of each other on the color wheel.



76, 17.052, 54.521



78, 14.943, 239.203

Rectangle

The Rectangle color scheme consists of four colors that form a rectangle on the color wheel.



76, 17.052, 54.521



76, 17.052, 104.521



76, 17.052, 234.521



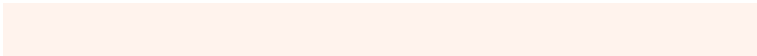
76, 17.052, 284.521

Sweetspot

The Sweet Spot groups the original color and five complimentary colors.



76, 17.052, 54.530



97, 5.220, 55.800



73, 27.288, 337.483



51, 3.399, 55.760



0, 0.000, 0.000



53, 0.007, 296.813

Same Dimension

The Same Dimension uses a secret algorithm to generate beautiful new colors.



76, 17.052, 54.530



86, 24.333, 54.137



83, 23.441, 99.558



43, 3.705, 55.640



41, 68.395, 49.685



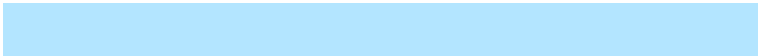
8, 17.922, 41.371

Inverse Universe

The Inverse Universe completely reimagines the original color for something new.



78, 14.943, 239.203



88, 20.594, 240.049



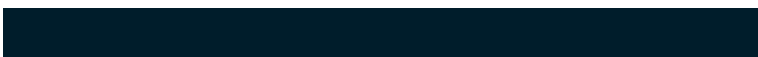
71, 24.254, 285.588



43, 3.540, 237.431



45, 38.688, 262.818



9, 13.731, 251.533

Previews

White Background



This preview shows how the CIELCh color 76, 17.052, 54.521 looks on a white background.

Color Contrast Check

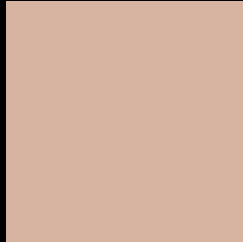
Large Text (above 18pt) WCAG AA × Fail

Any Text WCAG AA × Fail

Large Text (above 18pt) WCAG AAA × Fail

Any Text WCAG AAA × Fail

Black Background



This preview shows how the CIELCh color 76, 17.052, 54.521 looks on a black background.

Color Contrast Check

Large Text (above 18pt) WCAG AA ✓ Pass

Any Text WCAG AA ✓ Pass

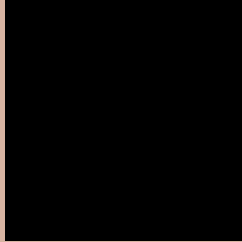
Large Text (above 18pt) WCAG AAA ✓ Pass

Any Text WCAG AAA ✓ Pass

If you want to check with other color combinations, try the [Color Contrast Checker](#).

CIELCh 76, 17.052, 54.521

Background



This preview shows how black text looks on a background with the CIELCh color 76, 17.052, 54.521.

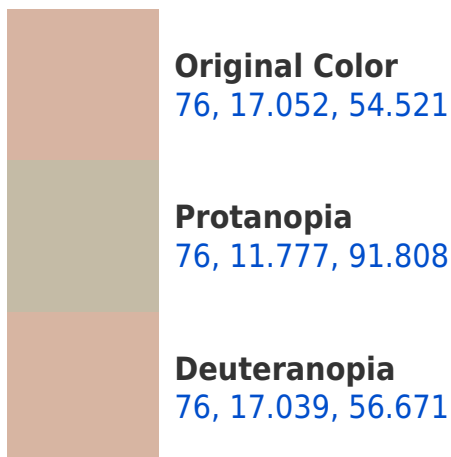


This preview shows how white text looks on a background with the CIELCh color 76, 17.052, 54.521.

Color Blindness Simulation

Color vision deficiency is a very complex topic, and I could not describe the different causes any better than Wikipedia does, so if you want to learn more, you should check out their [article about color blindness](#).

Dichromacy





Tritanopia
76, 17.844, 356.177

Trichromacy



Original Color
76, 17.052, 54.521

Protanomaly
76, 12.856, 75.846

Deuteranomaly
76, 17.039, 56.671

Tritanomaly
76, 15.423, 16.734

Monochromacy



Original Color
76, 17.052, 54.521

Achromatopsia
77, 0.009, 296.813

Achromatomaly
76, 6.195, 56.839

CSS Examples

Text

The CSS property to change the color of the text to CIELCh 76, 17.052, 54.521 is called "color". The color property can be set on classes, ids or directly on the HTML element.

This example shows how text in the color `rgb(215, 180, 162)` looks like.

```
.text, #text, p{  
    color:rgb(215, 180, 162)  
}
```

If you want to add a text shadow in that color use the text-shadow property, you can generate a text shadow directly with our [CSS Text Shadow Generator](#).

Here you see how black text with a 4 pixel rgb(215, 180, 162) colored shadow looks like.

```
.shadow{ text-shadow: 4px 4px 2px rgb(215, 180, 162) }
```

Border

The CSS property to change the border of an element to CIELCh 76, 17.052, 54.521 is called "border". The border property can be set on classes, ids or directly on the HTML element.

This example shows the color as border, it can be applied via the CSS property "border" or "border-color".

```
.border, #border, table{ border:4px solid rgb(215, 180, 162) }
```

If only the border color should be changed use the property `border-color`.

```
.border{ border-color:rgb(215, 180, 162) }
```

If you want to add a box shadow in that color use:

Here you see how a box with a 4 pixel `rgb(215, 180, 162)` colored shadow looks like.

```
.boxshadow{ -moz-box-shadow:4px 4px 4px  
4px rgb(215, 180, 162); -webkit-box-  
shadow:4px 4px 4px 4px rgb(215, 180, 162);  
box-shadow:4px 4px 4px 4px rgb(215, 180,  
162) }
```

Background

The CSS property to change the background color of an element to CIELCh 76, 17.052, 54.521 is called "background". The background property can be set on classes, ids or directly on the HTML element.

```
.background, #background, body{  
background: rgb(215, 180, 162) }
```

If only the background color should be changed can be used:

```
.background{ background-color: rgb(215,  
180, 162) }
```

This example shows the color as background, it is applied via the CSS property "background".

To optimize and compress your CSS code, you can use our [online CSS compressor and optimizer](#) based on csstidy. If you want to create a linear or radial gradient as background or border, check our [CSS Gradient Generator](#).

Hey! You found this booklet interesting? Support Converting Colors with the new Membership Option!

The pro membership hides all ads, plus gives you double the colors in the color bucket, and more awesome pro features!

[Learn more, Memberships starting at \\$2.50/m!](#)

**Follow me
on Twitter!**

@ConvertingColor