

Converting Colors

CIELCh(76, 18.205, 48.390)

Have a look what the booklet for
CIELCh(76, 18.205, 48.390) contains.

CIELCh(76, 18.205, 48.390)	3
<i>Conversions</i>	4
<i>Details</i>	6
<i>Harmonies</i>	11
<i>Previews</i>	20
<i>Color Blindness Simulation</i>	23
<i>CSS Examples</i>	26

Color

CIELCh(76, 18.205, 48.390)

Conversions

Conversions Part 1

Format	Color
Hex	DBB3A3
RGB	219, 179, 163
RGB Percent	86%, 70%, 64%
CMY	0.1416, 0.2984, 0.3611
CMYK	0.00, 0.18, 0.26, 0.14
HSL	17°, 44%, 75%
HSV	17°, 26%, 86%
XYZ	51.8864, 49.8872, 41.5008
YIQ	189.1360, 28.9760, 3.5040

Conversions

Conversions Part 2

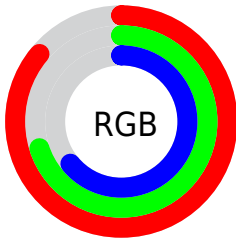
Format	Color
R _Y B	219, 185, 163
Decimal	14398371
CIE Lab	76.00, 12.09, 13.61
CIE LCh	76, 18.205, 48.390
Yxy	49.8872, 0.3621, 0.3482
Android (android.graphics.Color)	4292588451 (0xFFDDBB3A3)
YUV	189.1360, -12.8850, 26.1907
Hunter-Lab	70.6309, 7.5245, 14.6045

Details

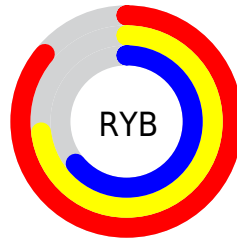
The CIELCh color **76, 18.205, 48.390** is a light color, and the websafe version is hex **CC9999**. A complement of this color would be **79, 15.580, 232.035**, and the grayscale version is **77, 0.009, 296.813**.

A 20% lighter version of the original color is **94, 11.434, 69.163**, and **56, 18.252, 48.460** is the 20% darker color. If you saturate the color by 10%, you get **72, 26.348, 48.022**, and if you desaturate by 10%, it is **80, 10.661, 48.860**.

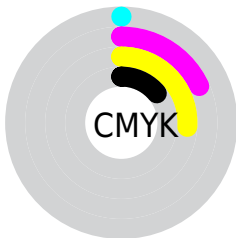
Distribution



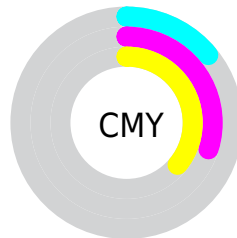
- Red (86%)
- Green (70%)
- Blue (64%)



- Red (86%)
- Yellow (73%)
- Blue (64%)



- Cyan (0%)
- Magenta (18%)
- Yellow (26%)
- Black (14%)



- Cyan (14%)
- Magenta (30%)
- Yellow (36%)


Brightness & Saturation Gradients

These gradients show how the CIELCh color 76, 18.205, 48.390 changes by changing the brightness by 10 percent. The first figure shows a shift by +10% for each color and the second figure -10%.

Similar to the brightness gradients but the following saturation gradients show a change of the CIELCh color 76, 18.205, 48.390 by changing the saturation by 10% instead.

 76, 18.205, 48.390

 76, 18.205, 48.390

 100, 18.205,
48.390

 66, 18.205, 48.390

 96, 18.205, 48.390

 56, 18.205, 48.390

 46, 18.205, 48.390

 36, 18.205, 48.390

 26, 18.205, 48.390

 16, 18.205, 48.390

 6, 18.205, 48.390

 0, 18.205, 48.390

 76, 18.205, 48.390

 76, 18.205, 48.390

72, 26.348, 48.022

80, 10.661, 48.860

68, 35.117, 47.763

85, 3.673, 49.319

64, 44.495, 47.637

89, 2.813, 230.272

60, 54.380, 47.638

94, 8.853, 230.783

57, 64.499, 47.694

98, 12.159,
198.694

54, 74.213, 47.584

51, 82.220, 46.809

50, 85.241, 46.408

Harmonies

Complementary

The Complementary color scheme is a pair of colors which are on the opposite of each other on the color wheel.



76, 18.205, 48.390



79, 15.580, 232.035

Rectangle

The Rectangle color scheme consists of four colors that form a rectangle on the color wheel.



76, 18.205, 48.390



76, 18.205, 98.390



76, 18.205, 228.390



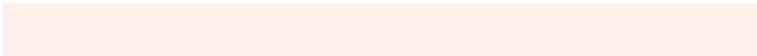
76, 18.205, 278.390

Sweetspot

The Sweet Spot groups the original color and five complimentary colors.



76, 18.204, 48.399



96, 6.019, 49.222



73, 29.741, 335.409



50, 4.303, 49.152



0, 0.000, 0.000



53, 0.007, 296.813

Same Dimension

The Same Dimension uses a secret algorithm to generate beautiful new colors.



76, 18.204, 48.399



84, 25.541, 48.172



83, 23.506, 96.362



44, 3.799, 49.159



40, 71.219, 46.913



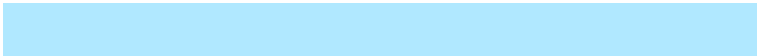
8, 19.865, 37.507

Inverse Universe

The Inverse Universe completely reimagines the original color for something new.



79, 15.580, 232.035



89, 21.005, 232.742



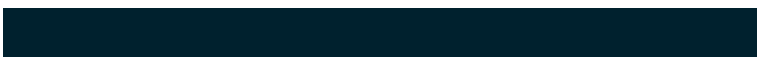
72, 24.109, 282.924



44, 3.606, 230.541



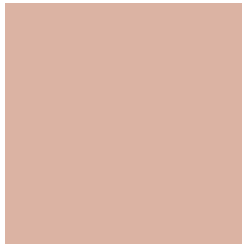
49, 35.818, 253.164



11, 13.558, 243.215

Previews

White Background



This preview shows how the CIELCh color 76, 18.205, 48.390 looks on a white background.

Color Contrast Check

Large Text (above 18pt) WCAG AA × Fail

Any Text WCAG AA × Fail

Large Text (above 18pt) WCAG AAA × Fail

Any Text WCAG AAA × Fail

Black Background



This preview shows how the CIELCh color 76, 18.205, 48.390 looks on a black background.

Color Contrast Check

Large Text (above 18pt) WCAG AA ✓ Pass

Any Text WCAG AA ✓ Pass

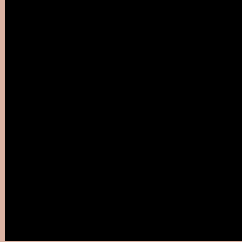
Large Text (above 18pt) WCAG AAA ✓ Pass

Any Text WCAG AAA ✓ Pass

If you want to check with other color combinations, try the [Color Contrast Checker](#).

CIELCh 76, 18.205, 48.390

Background



This preview shows how black text looks on a background with the CIELCh color 76, 18.205, 48.390.



This preview shows how white text looks on a background with the CIELCh color 76, 18.205, 48.390.

Color Blindness Simulation

Color vision deficiency is a very complex topic, and I could not describe the different causes any better than Wikipedia does, so if you want to learn more, you should check out their [article about color blindness](#).

Dichromacy



Original Color

76, 18.205, 48.390

Protanopia

76, 11.264, 91.080

Deuteranopia

76, 16.695, 55.300



Tritanopia
76, 19.264, 358.280

Trichromacy



Original Color
76, 18.205, 48.390

Protanomaly
76, 12.459, 70.279

Deuteranomaly
76, 17.068, 52.384

Tritanomaly
76, 17.453, 13.891

Monochromacy



Original Color
76, 18.205, 48.390

Achromatopsia
77, 0.009, 296.813

Achromatomaly
76, 6.290, 44.914

CSS Examples

Text

The CSS property to change the color of the text to CIELCh 76, 18.205, 48.390 is called "color". The color property can be set on classes, ids or directly on the HTML element.

This example shows how text in the color `rgb(219, 179, 163)` looks like.

```
.text, #text, p{  
    color:rgb(219, 179, 163)  
}
```

If you want to add a text shadow in that color use the text-shadow property, you can generate a text shadow directly with our [CSS Text Shadow Generator](#).

Here you see how black text with a 4 pixel rgb(219, 179, 163) colored shadow looks like.

```
.shadow{ text-shadow: 4px 4px 2px rgb(219, 179, 163) }
```

Border

The CSS property to change the border of an element to CIELCh 76, 18.205, 48.390 is called "border". The border property can be set on classes, ids or directly on the HTML element.

This example shows the color as border, it can be applied via the CSS property "border" or "border-color".

```
.border, #border, table{ border:4px solid rgb(219, 179, 163) }
```

If only the border color should be changed use the property `border-color`.

```
.border{ border-color:rgb(219, 179, 163) }
```

If you want to add a box shadow in that color use:

Here you see how a box with a 4 pixel `rgb(219, 179, 163)` colored shadow looks like.

```
.boxshadow{ -moz-box-shadow:4px 4px 4px 4px rgb(219, 179, 163); -webkit-box-shadow:4px 4px 4px 4px rgb(219, 179, 163); box-shadow:4px 4px 4px 4px rgb(219, 179, 163) }
```

Background

The CSS property to change the background color of an element to CIELCh 76, 18.205, 48.390 is called "background". The background property can be set on classes, ids or directly on the HTML element.

```
.background, #background, body{  
background: rgb(219, 179, 163) }
```

If only the background color should be changed can be used:

```
.background{ background-color: rgb(219,  
179, 163) }
```

This example shows the color as background, it is applied via the CSS property "background".

To optimize and compress your CSS code, you can use our [online CSS compressor and optimizer](#) based on csstidy. If you want to create a linear or radial gradient as background or border, check our [CSS Gradient Generator](#).

Hey! You found this booklet interesting? Support Converting Colors with the new Membership Option!

The pro membership hides all ads, plus gives you double the colors in the color bucket, and more awesome pro features!

[Learn more, Memberships starting at \\$2.50/m!](#)

**Follow me
on Twitter!**

@ConvertingColor