

Converting Colors

CIELCh(76, 18.239, 41.507)

Have a look what the booklet for
CIELCh(76, 18.239, 41.507) contains.

CIELCh(76, 18.309, 41.073)	3
<i>Conversions</i>	4
<i>Details</i>	6
<i>Harmonies</i>	11
<i>Previews</i>	20
<i>Color Blindness Simulation</i>	23
<i>CSS Examples</i>	26

Color

CIELCh(76, 18.309, 41.073)

Conversions

Conversions Part 1

Format	Color
Hex	DDB2A6
RGB	221, 178, 166
RGB Percent	87%, 70%, 65%
CMY	0.1339, 0.3025, 0.3495
CMYK	0.00, 0.19, 0.25, 0.13
HSL	13°, 45%, 76%
HSV	13°, 25%, 87%
XYZ	52.5419, 49.8872, 42.8741
YIQ	189.4890, 29.4800, 5.3840

Conversions

Conversions Part 2

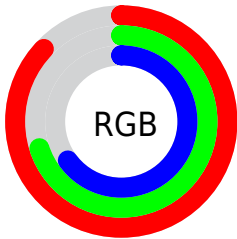
Format	Color
R _Y B	221, 181, 166
Decimal	14529190
CIE Lab	76.00, 13.80, 12.03
CIE LCh	76, 18.309, 41.073
Yxy	49.8872, 0.3616, 0.3433
Android (android.graphics.Color)	4292719270 (0xFFDDB2A6)
YUV	189.4890, -11.5801, 27.6351
Hunter-Lab	70.6309, 9.1809, 13.4517

Details

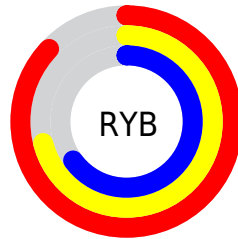
The CIELCh color **76, 18.309, 41.073** is a light color, and the websafe version is hex **CC9999**. A complement of this color would be **81, 15.508, 222.909**, and the grayscale version is **77, 0.009, 296.813**.

A 20% lighter version of the original color is **94, 10.208, 60.405**, and **56, 18.361, 40.811** is the 20% darker color. If you saturate the color by 10%, you get **71, 26.754, 41.101**, and if you desaturate by 10%, it is **81, 10.510, 41.186**.

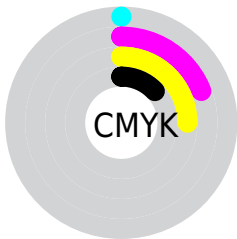
Distribution



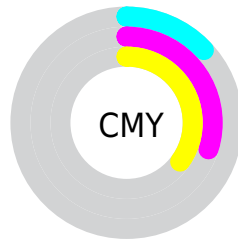
- Red (87%)
- Green (70%)
- Blue (65%)



- Red (87%)
- Yellow (71%)
- Blue (65%)



- Cyan (0%)
- Magenta (19%)
- Yellow (25%)
- Black (13%)



- Cyan (13%)
- Magenta (30%)
- Yellow (35%)

Brightness & Saturation Gradients

These gradients show how the CIELCh color 76, 18.309, 41.073 changes by changing the brightness by 10 percent. The first figure shows a shift by +10% for each color and the second figure -10%.

Similar to the brightness gradients but the following saturation gradients show a change of the CIELCh color 76, 18.309, 41.073 by changing the saturation by 10% instead.

76, 18.309, 41.073

76, 18.309, 41.073

100, 18.309,
41.073

66, 18.309, 41.073

96, 18.309, 41.073

56, 18.309, 41.073

46, 18.309, 41.073

36, 18.309, 41.073

26, 18.309, 41.073

16, 18.309, 41.073

6, 18.309, 41.073

0, 18.309, 41.073

76, 18.309, 41.073

76, 18.309, 41.073

71, 26.754, 41.101

81, 10.510, 41.186

67, 35.869, 41.288

86, 3.317, 41.299

63, 45.628, 41.676

91, 3.328, 221.960

59, 55.924, 42.275

96, 9.484, 222.215

55, 66.484, 43.035

98, 11.523,
198.736

52, 76.682, 43.744

50, 85.167, 43.864

49, 88.681, 43.790

Harmonies

Complementary

The Complementary color scheme is a pair of colors which are on the opposite of each other on the color wheel.



76, 18.309, 41.073



81, 15.508, 222.909

Rectangle

The Rectangle color scheme consists of four colors that form a rectangle on the color wheel.



76, 18.309, 41.073



76, 18.309, 91.073



76, 18.309, 221.073



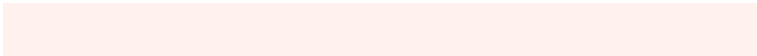
76, 18.309, 271.073

Sweetspot

The Sweet Spot groups the original color and five complimentary colors.



76, 18.308, 41.081



96, 5.374, 41.296



74, 30.541, 332.730



51, 3.501, 41.290



0, 0.000, 0.000



53, 0.007, 296.813

Same Dimension

The Same Dimension uses a secret algorithm to generate beautiful new colors.



76, 18.308, 41.081



84, 25.346, 41.073



83, 21.618, 91.820



44, 3.894, 41.268



38, 73.614, 44.214



7, 20.705, 32.508

Inverse Universe

The Inverse Universe completely reimagines the original color for something new.



81, 15.508, 222.909



91, 20.612, 223.336



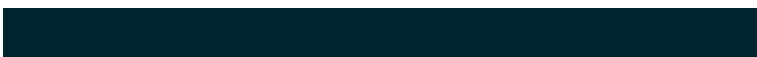
74, 21.805, 278.512



45, 3.676, 222.061



52, 33.250, 239.310



12, 13.120, 231.164

Previews

White Background



This preview shows how the CIELCh color 76, 18.309, 41.073 looks on a white background.

Color Contrast Check

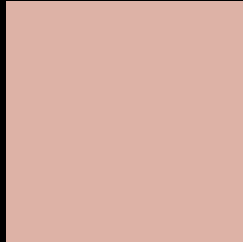
Large Text (above 18pt) WCAG AA × Fail

Any Text WCAG AA × Fail

Large Text (above 18pt) WCAG AAA × Fail

Any Text WCAG AAA × Fail

Black Background



This preview shows how the CIELCh color 76, 18.309, 41.073 looks on a black background.

Color Contrast Check

Large Text (above 18pt) WCAG AA ✓ Pass

Any Text WCAG AA ✓ Pass

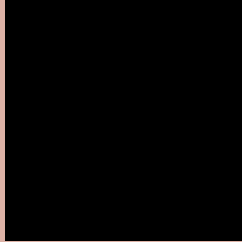
Large Text (above 18pt) WCAG AAA ✓ Pass

Any Text WCAG AAA ✓ Pass

If you want to check with other color combinations, try the [Color Contrast Checker](#).

CIELCh 76, 18.309, 41.073

Background



This preview shows how black text looks on a background with the CIELCh color 76, 18.309, 41.073.

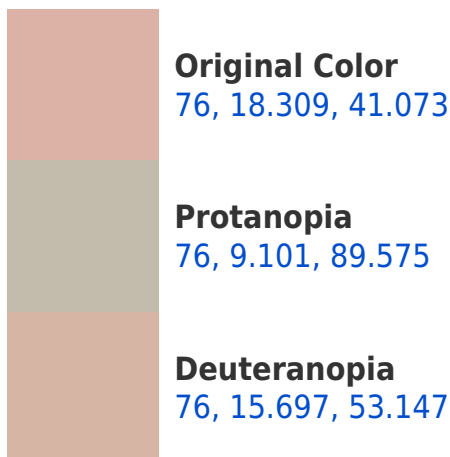


This preview shows how white text looks on a background with the CIELCh color 76, 18.309, 41.073.

Color Blindness Simulation

Color vision deficiency is a very complex topic, and I could not describe the different causes any better than Wikipedia does, so if you want to learn more, you should check out their [article about color blindness](#).

Dichromacy





Tritanopia
76, 19.454, 0.243

Trichromacy



Original Color
76, 18.309, 41.073

Protanomaly
76, 11.218, 65.408

Deuteranomaly
76, 16.456, 49.421

Tritanomaly
76, 17.844, 14.084

Monochromacy



Original Color
76, 18.309, 41.073

Achromatopsia
77, 0.009, 296.813

Achromatomaly
76, 6.433, 39.210

CSS Examples

Text

The CSS property to change the color of the text to CIELCh 76, 18.309, 41.073 is called "color". The color property can be set on classes, ids or directly on the HTML element.

This example shows how text in the color `rgb(221, 178, 166)` looks like.

```
.text, #text, p{  
    color:rgb(221, 178, 166)  
}
```

If you want to add a text shadow in that color use the text-shadow property, you can generate a text shadow directly with our [CSS Text Shadow Generator](#).

Here you see how black text with a 4 pixel rgb(221, 178, 166) colored shadow looks like.

```
.shadow{ text-shadow: 4px 4px 2px rgb(221, 178, 166) }
```

Border

The CSS property to change the border of an element to CIELCh 76, 18.309, 41.073 is called "border". The border property can be set on classes, ids or directly on the HTML element.

This example shows the color as border, it can be applied via the CSS property "border" or "border-color".

```
.border, #border, table{ border:4px solid rgb(221, 178, 166) }
```

If only the border color should be changed use the property `border-color`.

```
.border{ border-color:rgb(221, 178, 166) }
```

If you want to add a box shadow in that color use:

Here you see how a box with a 4 pixel `rgb(221, 178, 166)` colored shadow looks like.

```
.boxshadow{ -moz-box-shadow:4px 4px 4px 4px rgb(221, 178, 166); -webkit-box-shadow:4px 4px 4px 4px rgb(221, 178, 166); box-shadow:4px 4px 4px 4px rgb(221, 178, 166) }
```

Background

The CSS property to change the background color of an element to CIELCh 76, 18.309, 41.073 is called "background". The background property can be set on classes, ids or directly on the HTML element.

```
.background, #background, body{  
background: rgb(221, 178, 166) }
```

If only the background color should be changed can be used:

```
.background{ background-color: rgb(221,  
178, 166) }
```

This example shows the color as background, it is applied via the CSS property "background".

To optimize and compress your CSS code, you can use our [online CSS compressor and optimizer](#) based on csstidy. If you want to create a linear or radial gradient as background or border, check our [CSS Gradient Generator](#).

Hey! You found this booklet interesting? Support Converting Colors with the new Membership Option!

The pro membership hides all ads, plus gives you double the colors in the color bucket, and more awesome pro features!

[Learn more, Memberships starting at \\$2.50/m!](#)

**Follow me
on Twitter!**

@ConvertingColor