

Converting Colors

CIELCh(76, 19.433, 76.724)

Have a look what the booklet for
CIELCh(76, 19.433, 76.724) contains.

CIELCh(76, 19.281, 75.757)	3
<i>Conversions</i>	4
<i>Details</i>	6
<i>Harmonies</i>	11
<i>Previews</i>	20
<i>Color Blindness Simulation</i>	23
<i>CSS Examples</i>	26

Color

CIELCh(76, 19.281, 75.757)

Conversions

Conversions Part 1

Format	Color
Hex	D1B799
RGB	209, 183, 153
RGB Percent	82%, 72%, 60%
CMY	0.1793, 0.2812, 0.3989
CMYK	0.00, 0.12, 0.27, 0.18
HSL	32°, 38%, 71%
HSV	32°, 27%, 82%
XYZ	49.1384, 49.8872, 37.2928
YIQ	187.3540, 25.1260, -3.8180

Conversions

Conversions Part 2

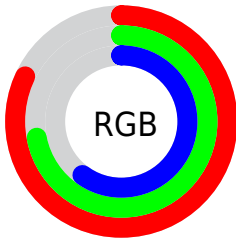
Format	Color
RYP	202, 209, 153
Decimal	13744025
CIELab	76.00, 4.74, 18.69
CIElCh	76, 19.281, 75.757
Yxy	49.8872, 0.3605, 0.3660
Android (android.graphics.Color)	4291934105 (0xFFD1B799)
YUV	187.3540, -16.9365, 18.9835
Hunter-Lab	70.6309, 0.5797, 18.1368

Details

The CIELCh color $76, 19.281, 75.757$ is a light color, and the websafe version is hex `CCCC99`. A complement of this color would be $72, 18.217, 263.329$, and the grayscale version is $76, 0.009, 296.813$.

A 20% lighter version of the original color is $95, 17.437, 88.711$, and $56, 19.220, 75.214$ is the 20% darker color. If you saturate the color by 10%, you get $73, 27.032, 74.449$, and if you desaturate by 10%, it is $79, 11.831, 77.051$.

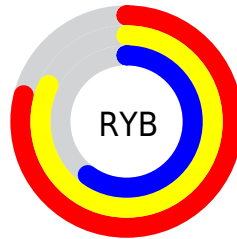
Distribution



Red (82%)

Green (72%)

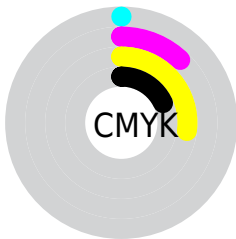
Blue (60%)



Red (79%)

Yellow (82%)

Blue (60%)

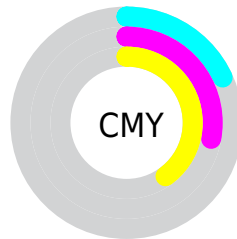


Cyan (0%)

Magenta (12%)

Yellow (27%)

Black (18%)



Cyan (18%)

Magenta (28%)

Yellow (40%)

Brightness & Saturation Gradients

These gradients show how the CIELCh color 76, 19.281, 75.757 changes by changing the brightness by 10 percent. The first figure shows a shift by +10% for each color and the second figure -10%.

Similar to the brightness gradients but the following saturation gradients show a change of the CIELCh color 76, 19.281, 75.757 by changing the saturation by 10% instead.

■ 76, 19.281, 75.757

■ 76, 19.281, 75.757

■ 100, 19.281,
75.757

■ 66, 19.281, 75.757

■ 96, 19.281, 75.757

■ 56, 19.281, 75.757

■ 46, 19.281, 75.757

■ 36, 19.281, 75.757

■ 26, 19.281, 75.757

■ 16, 19.281, 75.757

■ 6, 19.281, 75.757

■ 0, 19.281, 75.757

■ 76, 19.281, 75.757

■ 76, 19.281, 75.757

73, 27.032, 74.449

79, 11.831, 77.051

70, 35.062, 73.109

82, 4.675, 78.276

68, 43.295, 71.732

85, 2.204, 259.747

65, 51.549, 70.284

88, 8.832, 260.824

63, 59.447, 68.677

91, 13.964,
258.666

60, 66.300, 66.726

93, 12.606,
232.283

58, 71.179, 64.141

57, 72.568, 63.283

96, 14.061,
206.384

97, 15.223,
198.492

Harmonies

Complementary

The Complementary color scheme is a pair of colors which are on the opposite of each other on the color wheel.



76, 19.281, 75.757



72, 18.217, 263.329

Rectangle

The Rectangle color scheme consists of four colors that form a rectangle on the color wheel.



76, 19.281, 75.757



76, 19.281, 125.757



76, 19.281, 255.757



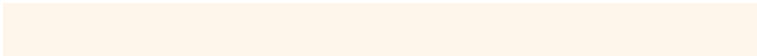
76, 19.281, 305.757

Sweetspot

The Sweet Spot groups the original color and five complimentary colors.



76, 19.281, 75.765



97, 6.508, 78.122



69, 25.488, 348.014



51, 4.640, 77.940



0, 0.000, 0.000



53, 0.007, 296.813

Same Dimension

The Same Dimension uses a secret algorithm to generate beautiful new colors.



76, 19.281, 75.765



89, 27.373, 75.032



83, 29.255, 109.045



43, 3.940, 77.965



47, 61.557, 63.894



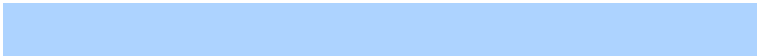
9, 15.756, 63.075

Inverse Universe

The Inverse Universe completely reimagines the original color for something new.



72, 18.217, 263.329



83, 25.520, 264.446



65, 31.181, 294.497



42, 3.876, 260.490



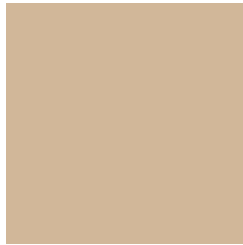
35, 56.372, 287.061



6, 16.984, 275.121

Previews

White Background



This preview shows how the CIELCh color 76, 19.281, 75.757 looks on a white background.

Color Contrast Check

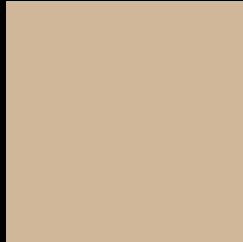
Large Text (above 18pt) WCAG AA × Fail

Any Text WCAG AA × Fail

Large Text (above 18pt) WCAG AAA × Fail

Any Text WCAG AAA × Fail

Black Background



This preview shows how the CIE LCh color 76, 19.281, 75.757 looks on a black background.

Color Contrast Check

Large Text (above 18pt) WCAG AA ✓ Pass

Any Text WCAG AA ✓ Pass

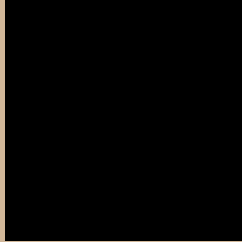
Large Text (above 18pt) WCAG AAA ✓ Pass

Any Text WCAG AAA ✓ Pass

If you want to check with other color combinations, try the [Color Contrast Checker](#).

CIELCh 76, 19.281, 75.757

Background



This preview shows how black text looks on a background with the CIELCh color 76, 19.281, 75.757.



This preview shows how white text looks on a background with the CIELCh color 76, 19.281, 75.757.

Color Blindness Simulation

Color vision deficiency is a very complex topic, and I could not describe the different causes any better than Wikipedia does, so if you want to learn more, you should check out their [article about color blindness](#).

Dichromacy



Original Color

76, 19.281, 75.757

Protanopia

76, 17.677, 94.221

Deuteranopia

76, 20.617, 62.377



Tritanopia
76, 15.437, 351.684

Trichromacy



Original Color
76, 19.281, 75.757

Protanomaly
76, 18.309, 88.102

Deuteranomaly
76, 19.811, 66.592

Tritanomaly
76, 12.372, 25.325

Monochromacy



Original Color
76, 19.281, 75.757

Achromatopsia
76, 0.009, 296.813

Achromatomaly
76, 7.017, 76.583

CSS Examples

Text

The CSS property to change the color of the text to CIELCh 76, 19.281, 75.757 is called "color". The color property can be set on classes, ids or directly on the HTML element.

This example shows how text in the color `rgb(209, 183, 153)` looks like.

```
.text, #text, p{  
    color:rgb(209, 183, 153)  
}
```

If you want to add a text shadow in that color use the text-shadow property, you can generate a text shadow directly with our [CSS Text Shadow Generator](#).

Here you see how black text with a 4 pixel rgb(209, 183, 153) colored shadow looks like.

```
.shadow{ text-shadow: 4px 4px 2px rgb(209, 183, 153) }
```

Border

The CSS property to change the border of an element to CIELCh 76, 19.281, 75.757 is called "border". The border property can be set on classes, ids or directly on the HTML element.

This example shows the color as border, it can be applied via the CSS property "border" or "border-color".

```
.border, #border, table{ border:4px solid rgb(209, 183, 153) }
```

If only the border color should be changed use the property `border-color`.

```
.border{ border-color:rgb(209, 183, 153) }
```

If you want to add a box shadow in that color use:

Here you see how a box with a 4 pixel `rgb(209, 183, 153)` colored shadow looks like.

```
.boxshadow{ -moz-box-shadow:4px 4px 4px  
4px rgb(209, 183, 153); -webkit-box-  
shadow:4px 4px 4px 4px rgb(209, 183, 153);  
box-shadow:4px 4px 4px 4px rgb(209, 183,  
153) }
```

Background

The CSS property to change the background color of an element to CIELCh 76, 19.281, 75.757 is called "background". The background property can be set on classes, ids or directly on the HTML element.

```
.background, #background, body{  
background: rgb(209, 183, 153) }
```

If only the background color should be changed can be used:

```
.background{ background-color: rgb(209,  
183, 153) }
```

This example shows the color as background, it is applied via the CSS property "background".

To optimize and compress your CSS code, you can use our [online CSS compressor and optimizer](#) based on csstidy. If you want to create a linear or radial gradient as background or border, check our [CSS Gradient Generator](#).

Hey! You found this booklet interesting? Support Converting Colors with the new Membership Option!

The pro membership hides all ads, plus gives you double the colors in the color bucket, and more awesome pro features!

[Learn more, Memberships starting at \\$2.50/m!](#)

**Follow me
on Twitter!**

@ConvertingColor