

Converting Colors

CIELCh(76, 20.757, 6.556)

Have a look what the booklet for
CIELCh(76, 20.757, 6.556) contains.

CIELCh(76, 20.571, 6.230)	3
<i>Conversions</i>	4
<i>Details</i>	6
<i>Harmonies</i>	11
<i>Previews</i>	20
<i>Color Blindness Simulation</i>	23
<i>CSS Examples</i>	26

Color

CIELCh(76, 20.571, 6.230)

Conversions

Conversions Part 1

Format	Color
Hex	E2AEB8
RGB	226, 174, 184
RGB Percent	89%, 68%, 72%
CMY	0.1138, 0.3177, 0.2785
CMYK	0.00, 0.23, 0.19, 0.11
HSL	348°, 47%, 78%
HSV	348°, 23%, 89%
XYZ	55.1367, 49.8872, 52.0575
YIQ	190.6880, 27.7820, 14.1340

Conversions

Conversions Part 2

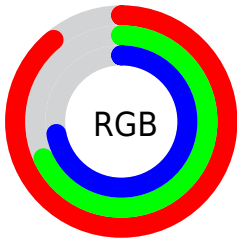
Format	Color
R _Y B	226, 174, 184
Decimal	14855864
CIE Lab	76.00, 20.45, 2.23
CIE LCh	76, 20.571, 6.230
Yxy	49.8872, 0.3510, 0.3176
Android (android.graphics.Color)	4293045944 (0xFFE2AEB8)
YUV	190.6880, -3.2972, 30.9686
Hunter-Lab	70.6309, 15.7385, 5.7428

Details

The CIELCh color **76, 20.571, 6.230** is a light color, and the websafe version is hex **CC9999**. A complement of this color would be **86, 18.679, 181.769**, and the grayscale version is **77, 0.009, 296.813**.

A 20% lighter version of the original color is **94, 10.331, 350.266**, and **56, 20.747, 6.055** is the 20% darker color. If you saturate the color by 10%, you get **70, 30.173, 7.649**, and if you desaturate by 10%, it is **82, 11.336, 5.047**.

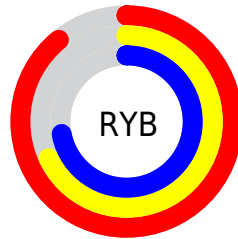
Distribution



Red (89%)

Green (68%)

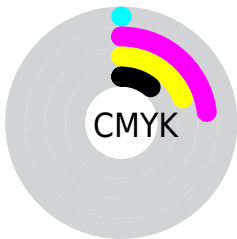
Blue (72%)



Red (89%)

Yellow (68%)

Blue (72%)

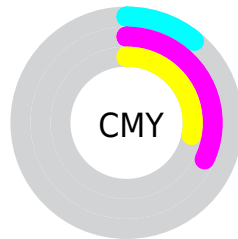


Cyan (0%)

Magenta (23%)

Yellow (19%)

Black (11%)



Cyan (11%)

Magenta (32%)

Yellow (28%)

Brightness & Saturation Gradients

These gradients show how the CIELCh color 76, 20.571, 6.230 changes by changing the brightness by 10 percent. The first figure shows a shift by +10% for each color and the second figure -10%.

Similar to the brightness gradients but the following saturation gradients show a change of the CIELCh color 76, 20.571, 6.230 by changing the saturation by 10% instead.

 76, 20.571, 6.230  76, 20.571, 6.230

 100, 20.571, 6.230  66, 20.571, 6.230

 96, 20.571, 6.230  56, 20.571, 6.230

 46, 20.571, 6.230

 36, 20.571, 6.230

 26, 20.571, 6.230

 16, 20.571, 6.230

 6, 20.571, 6.230

 0, 20.571, 6.230

 76, 20.571, 6.230

 76, 20.571, 6.230

70, 30.173, 7.649

82, 11.336, 5.047

65, 39.993, 9.382

88, 2.554, 3.894

60, 49.772, 11.549

94, 5.755, 183.367

56, 59.161, 14.290

98, 9.852, 198.851

52, 67.778, 17.762

50, 75.338, 22.070

48, 81.785, 27.140

47, 85.849, 30.793

Harmonies

Complementary

The Complementary color scheme is a pair of colors which are on the opposite of each other on the color wheel.



76, 20.571, 6.230



86, 18.679, 181.769

Rectangle

The Rectangle color scheme consists of four colors that form a rectangle on the color wheel.



76, 20.571, 6.230



76, 20.571, 56.230



76, 20.571, 186.230



76, 20.571, 236.230

Sweetspot

The Sweet Spot groups the original color and five complimentary colors.



76, 20.569, 6.235



95, 6.622, 4.399



76, 31.613, 319.832



50, 4.310, 4.466



0, 0.000, 0.000



53, 0.007, 296.813

Same Dimension

The Same Dimension uses a secret algorithm to generate beautiful new colors.



76, 20.569, 6.235



82, 27.943, 6.933



80, 16.576, 50.113



44, 4.874, 4.659



37, 70.580, 29.819



6, 25.281, 12.802

Inverse Universe

The Inverse Universe completely reimagines the original color for something new.



76, 20.569, 6.235



82, 27.943, 6.933



82, 14.485, 233.665



44, 4.874, 4.659



37, 70.580, 29.819



6, 25.281, 12.802

Previews

White Background



This preview shows how the CIELCh color 76, 20.571, 6.230 looks on a white background.

Color Contrast Check

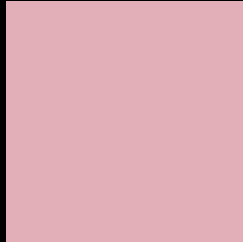
Large Text (above 18pt) WCAG AA × Fail

Any Text WCAG AA × Fail

Large Text (above 18pt) WCAG AAA × Fail

Any Text WCAG AAA × Fail

Black Background



This preview shows how the CIE LCh color 76, 20.571, 6.230 looks on a black background.

Color Contrast Check

Large Text (above 18pt) WCAG AA ✓ Pass

Any Text WCAG AA ✓ Pass

Large Text (above 18pt) WCAG AAA ✓ Pass

Any Text WCAG AAA ✓ Pass

If you want to check with other color combinations, try the [Color Contrast Checker](#).

CIELCh 76, 20.571, 6.230

Background



This preview shows how black text looks on a background with the CIELCh color 76, 20.571, 6.230.



This preview shows how white text looks on a background with the CIELCh color 76, 20.571, 6.230.

Color Blindness Simulation

Color vision deficiency is a very complex topic, and I could not describe the different causes any better than Wikipedia does, so if you want to learn more, you should check out their [article about color blindness](#).

Dichromacy



Original Color

76, 20.571, 6.230

Protanopia

76, 2.439, 317.306

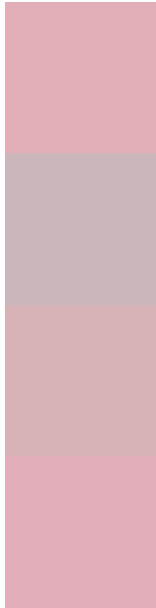
Deuteranopia

76, 10.318, 14.281



Tritanopia
76, 20.925, 1.941

Trichromacy



Original Color
76, 20.571, 6.230

Protanomaly
76, 8.521, 357.890

Deuteranomaly
76, 14.366, 9.911

Tritanomaly
76, 20.793, 3.353

Monochromacy



Original Color
76, 20.571, 6.230

Achromatopsia
77, 0.009, 296.813

Achromatomaly
77, 7.317, 7.283

CSS Examples

Text

The CSS property to change the color of the text to CIELCh 76, 20.571, 6.230 is called "color". The color property can be set on classes, ids or directly on the HTML element.

This example shows how text in the color `rgb(226, 174, 184)` looks like.

```
.text, #text, p{  
    color:rgb(226, 174, 184)  
}
```

If you want to add a text shadow in that color use the text-shadow property, you can generate a text shadow directly with our [CSS Text Shadow Generator](#).

Here you see how black text with a 4 pixel rgb(226, 174, 184) colored shadow looks like.

```
.shadow{ text-shadow: 4px 4px 2px rgb(226, 174, 184) }
```

Border

The CSS property to change the border of an element to CIELCh 76, 20.571, 6.230 is called "border". The border property can be set on classes, ids or directly on the HTML element.

This example shows the color as border, it can be applied via the CSS property "border" or "border-color".

```
.border, #border, table{ border:4px solid rgb(226, 174, 184) }
```

If only the border color should be changed use the property `border-color`.

```
.border{ border-color:rgb(226, 174, 184) }
```

If you want to add a box shadow in that color use:

Here you see how a box with a 4 pixel `rgb(226, 174, 184)` colored shadow looks like.

```
.boxshadow{ -moz-box-shadow:4px 4px 4px  
4px rgb(226, 174, 184); -webkit-box-  
shadow:4px 4px 4px 4px rgb(226, 174, 184);  
box-shadow:4px 4px 4px 4px rgb(226, 174,  
184) }
```

Background

The CSS property to change the background color of an element to CIELCh 76, 20.571, 6.230 is called "background". The background property can be set on classes, ids or directly on the HTML element.

```
.background, #background, body{  
background: rgb(226, 174, 184) }
```

If only the background color should be changed can be used:

```
.background{ background-color: rgb(226,  
174, 184) }
```

This example shows the color as background, it is applied via the CSS property "background".

To optimize and compress your CSS code, you can use our [online CSS compressor and optimizer](#) based on csstidy. If you want to create a linear or radial gradient as background or border, check our [CSS Gradient Generator](#).

Hey! You found this booklet interesting? Support Converting Colors with the new Membership Option!

The pro membership hides all ads, plus gives you double the colors in the color bucket, and more awesome pro features!

[Learn more, Memberships starting at \\$2.50/m!](#)

**Follow me
on Twitter!**

@ConvertingColor