

Converting Colors

CIELCh(76, 22.948, 69.947)

Have a look what the booklet for
CIELCh(76, 22.948, 69.947) contains.

CIELCh(76, 22.920, 69.964)	3
<i>Conversions</i>	4
<i>Details</i>	6
<i>Harmonies</i>	11
<i>Previews</i>	20
<i>Color Blindness Simulation</i>	23
<i>CSS Examples</i>	26

Color

CIELCh(76, 22.920, 69.964)

Conversions

Conversions Part 1

Format	Color
Hex	D8B594
RGB	216, 181, 148
RGB Percent	85%, 71%, 58%
CMY	0.1522, 0.2895, 0.4190
CMYK	0.00, 0.16, 0.31, 0.15
HSL	29°, 47%, 71%
HSV	29°, 31%, 85%
XYZ	50.2893, 49.8872, 35.0645
YIQ	187.7030, 31.4530, -2.8430

Conversions

Conversions Part 2

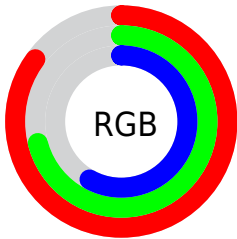
Format	Color
RYB	216, 212, 148
Decimal	14202260
CIELab	76.00, 7.85, 21.53
CIELCh	76, 22.920, 69.964
Yxy	49.8872, 0.3718, 0.3689
Android (android.graphics.Color)	4292392340 (0xFFD8B594)
YUV	187.7030, -19.5736, 24.8165
Hunter-Lab	70.6309, 3.4883, 20.0073

Details

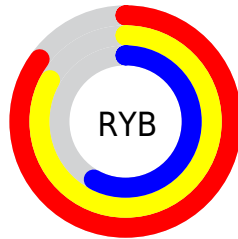
The CIELCh color **76, 22.920, 69.964** is a light color, and the websafe version is hex **FFCC99**. A complement of this color would be **73, 20.828, 258.783**, and the grayscale version is **76, 0.009, 296.813**.

A 20% lighter version of the original color is **94, 19.184, 87.940**, and **56, 22.911, 69.793** is the 20% darker color. If you saturate the color by 10%, you get **73, 30.970, 68.741**, and if you desaturate by 10%, it is **79, 15.247, 71.193**.

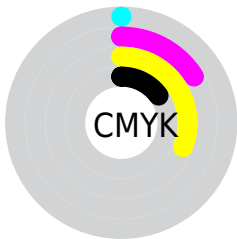
Distribution



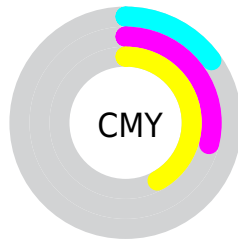
- Red (85%)
- Green (71%)
- Blue (58%)



- Red (85%)
- Yellow (83%)
- Blue (58%)



- Cyan (0%)
- Magenta (16%)
- Yellow (31%)
- Black (15%)



- Cyan (15%)
- Magenta (29%)
- Yellow (42%)

Brightness & Saturation Gradients

These gradients show how the CIELCh color 76, 22.920, 69.964 changes by changing the brightness by 10 percent. The first figure shows a shift by +10% for each color and the second figure -10%.

Similar to the brightness gradients but the following saturation gradients show a change of the CIELCh color 76, 22.920, 69.964 by changing the saturation by 10% instead.

 76, 22.920, 69.964

 76, 22.920, 69.964

 100, 22.920,
69.964

 66, 22.920, 69.964

 96, 22.920, 69.964

 56, 22.920, 69.964

 46, 22.920, 69.964

 36, 22.920, 69.964

 26, 22.920, 69.964

 16, 22.920, 69.964

 6, 22.920, 69.964

 0, 22.920, 69.964

 76, 22.920, 69.964

 76, 22.920, 69.964

73, 30.970, 68.741

79, 15.247, 71.193

70, 39.370, 67.503

83, 7.943, 72.389

67, 48.019, 66.237

86, 0.983, 73.233

64, 56.678, 64.885

89, 5.665, 254.890

61, 64.843, 63.308

93, 11.518,
254.035

59, 71.613, 61.228

96, 11.166,
217.844

57, 75.900, 58.976

97, 13.034,
198.635

Harmonies

Complementary

The Complementary color scheme is a pair of colors which are on the opposite of each other on the color wheel.



76, 22.920, 69.964



73, 20.828, 258.783

Rectangle

The Rectangle color scheme consists of four colors that form a rectangle on the color wheel.



76, 22.920, 69.964



76, 22.920, 119.964



76, 22.920, 249.964



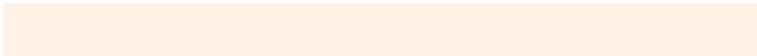
76, 22.920, 299.964

Sweetspot

The Sweet Spot groups the original color and five complimentary colors.



76, 22.920, 69.971



97, 7.089, 72.663



69, 31.750, 345.665



51, 4.944, 72.494



0, 0.000, 0.000



53, 0.007, 296.813

Same Dimension

The Same Dimension uses a secret algorithm to generate beautiful new colors.



76, 22.920, 69.971



86, 32.205, 69.124



85, 34.633, 106.421



43, 3.884, 72.625



45, 63.456, 59.638



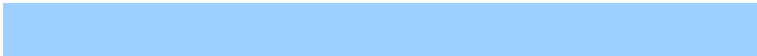
9, 17.043, 57.506

Inverse Universe

The Inverse Universe completely reimagines the original color for something new.



73, 20.828, 258.783



82, 28.578, 260.283



64, 37.320, 293.480



43, 3.791, 255.086



38, 51.651, 282.303



7, 16.832, 271.450

Previews

White Background



This preview shows how the CIELCh color 76, 22.920, 69.964 looks on a white background.

Color Contrast Check

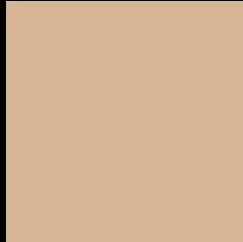
Large Text (above 18pt) WCAG AA × Fail

Any Text WCAG AA × Fail

Large Text (above 18pt) WCAG AAA × Fail

Any Text WCAG AAA × Fail

Black Background



This preview shows how the CIELCh color 76, 22.920, 69.964 looks on a black background.

Color Contrast Check

Large Text (above 18pt) WCAG AA ✓ Pass

Any Text WCAG AA ✓ Pass

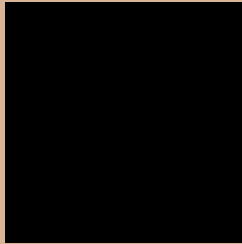
Large Text (above 18pt) WCAG AAA ✓ Pass

Any Text WCAG AAA ✓ Pass

If you want to check with other color combinations, try the [Color Contrast Checker](#).

CIELCh 76, 22.920, 69.964

Background



This preview shows how black text looks on a background with the CIELCh color 76, 22.920, 69.964.



This preview shows how white text looks on a background with the CIELCh color 76, 22.920, 69.964.

Color Blindness Simulation

Color vision deficiency is a very complex topic, and I could not describe the different causes any better than Wikipedia does, so if you want to learn more, you should check out their [article about color blindness](#).

Dichromacy



Original Color


76, 22.920, 69.964

Protanopia

76, 19.850, 94.326

Deuteranopia

76, 23.642, 66.167



Tritanopia
76, 18.911, 357.783

Trichromacy



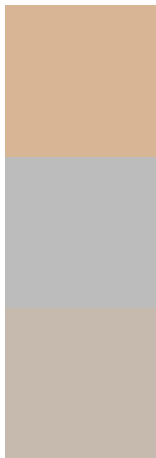
Original Color
76, 22.920, 69.964

Protanomaly
76, 20.452, 85.155

Deuteranomaly
76, 23.353, 66.895

Tritanomaly
76, 16.463, 26.304

Monochromacy



Original Color
76, 22.920, 69.964

Achromatopsia
76, 0.009, 296.813

Achromatomaly
76, 7.903, 73.903

CSS Examples

Text

The CSS property to change the color of the text to CIELCh 76, 22.920, 69.964 is called "color". The color property can be set on classes, ids or directly on the HTML element.

This example shows how text in the color `rgb(216, 181, 148)` looks like.

```
.text, #text, p{  
    color:rgb(216, 181, 148)  
}
```

If you want to add a text shadow in that color use the text-shadow property, you can generate a text shadow directly with our [CSS Text Shadow Generator](#).

Here you see how black text with a 4 pixel rgb(216, 181, 148) colored shadow looks like.

```
.shadow{ text-shadow: 4px 4px 2px rgb(216, 181, 148) }
```

Border

The CSS property to change the border of an element to CIELCh 76, 22.920, 69.964 is called "border". The border property can be set on classes, ids or directly on the HTML element.

This example shows the color as border, it can be applied via the CSS property "border" or "border-color".

```
.border, #border, table{ border:4px solid rgb(216, 181, 148) }
```

If only the border color should be changed use the property border-color.

```
.border{ border-color:rgb(216, 181, 148) }
```

If you want to add a box shadow in that color use:

Here you see how a box with a 4 pixel rgb(216, 181, 148) colored shadow looks like.

```
.boxshadow{ -moz-box-shadow:4px 4px 4px  
4px rgb(216, 181, 148); -webkit-box-  
shadow:4px 4px 4px 4px rgb(216, 181, 148);  
box-shadow:4px 4px 4px 4px rgb(216, 181,  
148) }
```

Background

The CSS property to change the background color of an element to CIELCh 76, 22.920, 69.964 is called "background". The background property can be set on classes, ids or directly on the HTML element.

```
.background, #background, body{  
background: rgb(216, 181, 148) }
```

If only the background color should be changed can be used:

```
.background{ background-color: rgb(216,  
181, 148) }
```

This example shows the color as background, it is applied via the CSS property "background".

To optimize and compress your CSS code, you can use our [online CSS compressor and optimizer](#) based on csstidy. If you want to create a linear or radial gradient as background or border, check our [CSS Gradient Generator](#).

Hey! You found this booklet interesting? Support Converting Colors with the new Membership Option!

The pro membership hides all ads, plus gives you double the colors in the color bucket, and more awesome pro features!

[Learn more, Memberships starting at \\$2.50/m!](#)

**Follow me
on Twitter!**

@ConvertingColor