

Converting Colors

CIELCh(76, 23.757, 67.579)

Have a look what the booklet for
CIELCh(76, 23.757, 67.579) contains.

CIELCh(76, 23.775, 67.659)	3
<i>Conversions</i>	4
<i>Details</i>	6
<i>Harmonies</i>	11
<i>Previews</i>	20
<i>Color Blindness Simulation</i>	23
<i>CSS Examples</i>	26

Color

CIELCh(76, 23.775, 67.659)

Conversions

Conversions Part 1

Format	Color
Hex	DAB493
RGB	218, 180, 147
RGB Percent	85%, 71%, 58%
CMY	0.1435, 0.2926, 0.4220
CMYK	0.00, 0.17, 0.33, 0.14
HSL	28°, 49%, 72%
HSV	28°, 33%, 86%
XYZ	50.7326, 49.8872, 34.7145
YIQ	187.6000, 33.2410, -2.2070

Conversions

Conversions Part 2

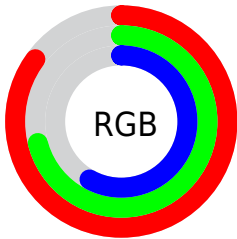
Format	Color
R _{YB}	218, 209, 147
Decimal	14333075
CIE Lab	76.00, 9.04, 21.99
CIE LCh	76, 23.775, 67.659
Yxy	49.8872, 0.3749, 0.3686
Android (android.graphics.Color)	4292523155 (0xFFDAB493)
YUV	187.6000, -20.0158, 26.6608
Hunter-Lab	70.6309, 4.6085, 20.3011

Details

The CIELCh color $76, 23.775, 67.659$ is a light color, and the websafe version is hex `FFCC99`. A complement of this color would be $74, 21.267, 256.614$, and the grayscale version is $76, 0.009, 296.813$.

A 20% lighter version of the original color is $94, 19.342, 86.872$, and $56, 23.856, 67.310$ is the 20% darker color. If you saturate the color by 10%, you get $73, 31.933, 66.492$, and if you desaturate by 10%, it is $79, 16.026, 68.841$.

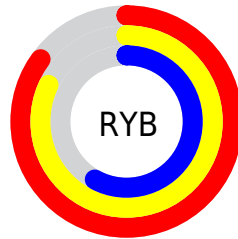
Distribution



Red (85%)

Green (71%)

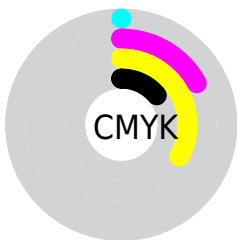
Blue (58%)



Red (85%)

Yellow (82%)

Blue (58%)

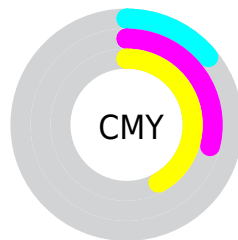


Cyan (0%)

Magenta (17%)

Yellow (33%)

Black (14%)



Cyan (14%)

Magenta (29%)

Yellow (42%)


Brightness & Saturation Gradients

These gradients show how the CIELCh color 76, 23.775, 67.659 changes by changing the brightness by 10 percent. The first figure shows a shift by +10% for each color and the second figure -10%.

Similar to the brightness gradients but the following saturation gradients show a change of the CIELCh color 76, 23.775, 67.659 by changing the saturation by 10% instead.

 76, 23.775, 67.659

 76, 23.775, 67.659

 100, 23.775,
67.659

 66, 23.775, 67.659

 96, 23.775, 67.659

 56, 23.775, 67.659

 46, 23.775, 67.659

 36, 23.775, 67.659

 26, 23.775, 67.659

 16, 23.775, 67.659

 6, 23.775, 67.659

 0, 23.775, 67.659

 76, 23.775, 67.659

 76, 23.775, 67.659

73, 31.933, 66.492

79, 16.026, 68.841

70, 40.474, 65.320

83, 8.676, 70.000

66, 49.294, 64.128

86, 1.698, 70.972

64, 58.140, 62.850

90, 4.943, 252.459

61, 66.473, 61.332

93, 10.661,
250.732

58, 73.332, 59.265

96, 10.992,
210.862

56, 77.241, 57.335

98, 12.316,
198.683

Harmonies

Complementary

The Complementary color scheme is a pair of colors which are on the opposite of each other on the color wheel.



76, 23.775, 67.659



74, 21.267, 256.614

Rectangle

The Rectangle color scheme consists of four colors that form a rectangle on the color wheel.



76, 23.775, 67.659



76, 23.775, 117.659



76, 23.775, 247.659



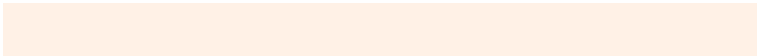
76, 23.775, 297.659

Sweetspot

The Sweet Spot groups the original color and five complimentary colors.



76, 23.775, 67.666



96, 7.806, 70.275



69, 33.782, 343.949



51, 5.346, 70.116



0, 0.000, 0.000



53, 0.007, 296.813

Same Dimension

The Same Dimension uses a secret algorithm to generate beautiful new colors.



76, 23.775, 67.666



85, 32.928, 66.865



85, 34.968, 104.805



44, 3.914, 70.347



45, 64.766, 57.976



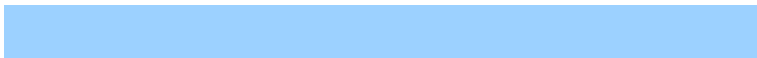
10, 18.391, 55.730

Inverse Universe

The Inverse Universe completely reimagines the original color for something new.



74, 21.267, 256.614



82, 28.681, 258.112



65, 37.586, 292.340



44, 3.808, 252.763



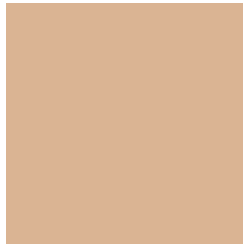
39, 50.148, 280.153



8, 17.130, 269.938

Previews

White Background



This preview shows how the CIELCh color 76, 23.775, 67.659 looks on a white background.

Color Contrast Check

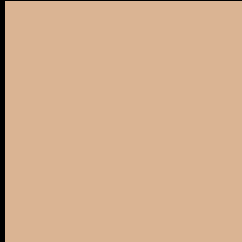
Large Text (above 18pt) WCAG AA × Fail

Any Text WCAG AA × Fail

Large Text (above 18pt) WCAG AAA × Fail

Any Text WCAG AAA × Fail

Black Background



This preview shows how the CIELCh color 76, 23.775, 67.659 looks on a black background.

Color Contrast Check

Large Text (above 18pt) WCAG AA ✓ Pass

Any Text WCAG AA ✓ Pass

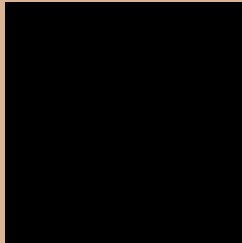
Large Text (above 18pt) WCAG AAA ✓ Pass

Any Text WCAG AAA ✓ Pass

If you want to check with other color combinations, try the [Color Contrast Checker](#).

CIELCh 76, 23.775, 67.659

Background



This preview shows how black text looks on a background with the CIELCh color 76, 23.775, 67.659.



This preview shows how white text looks on a background with the CIELCh color 76, 23.775, 67.659.

Color Blindness Simulation

Color vision deficiency is a very complex topic, and I could not describe the different causes any better than Wikipedia does, so if you want to learn more, you should check out their [article about color blindness](#).

Dichromacy



Original Color

76, 23.775, 67.659

Protanopia

76, 19.850, 94.326

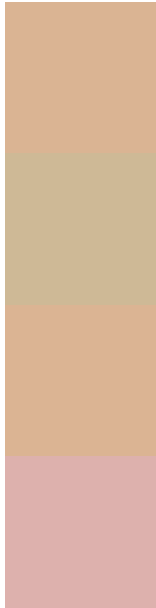
Deuteranopia

76, 24.060, 66.933



Tritanopia
76, 19.454, 0.243

Trichromacy



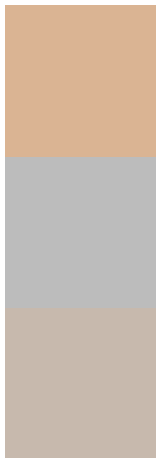
Original Color
76, 23.775, 67.659

Protanomaly
76, 20.622, 84.119

Deuteranomaly
76, 24.060, 66.933

Tritanomaly
76, 17.360, 27.838

Monochromacy



Original Color
76, 23.775, 67.659

Achromatopsia
76, 0.009, 296.813

Achromatomaly
76, 8.390, 69.583

CSS Examples

Text

The CSS property to change the color of the text to CIELCh 76, 23.775, 67.659 is called "color". The color property can be set on classes, ids or directly on the HTML element.

This example shows how text in the color `rgb(218, 180, 147)` looks like.

```
.text, #text, p{  
    color:rgb(218, 180, 147)  
}
```

If you want to add a text shadow in that color use the text-shadow property, you can generate a text shadow directly with our [CSS Text Shadow Generator](#).

Here you see how black text with a 4 pixel rgb(218, 180, 147) colored shadow looks like.

```
.shadow{ text-shadow: 4px 4px 2px rgb(218, 180, 147) }
```

Border

The CSS property to change the border of an element to CIELCh 76, 23.775, 67.659 is called "border". The border property can be set on classes, ids or directly on the HTML element.

This example shows the color as border, it can be applied via the CSS property "border" or "border-color".

```
.border, #border, table{ border:4px solid rgb(218, 180, 147) }
```

If only the border color should be changed use the property `border-color`.

```
.border{ border-color:rgb(218, 180, 147) }
```

If you want to add a box shadow in that color use:

Here you see how a box with a 4 pixel `rgb(218, 180, 147)` colored shadow looks like.

```
.boxshadow{ -moz-box-shadow:4px 4px 4px  
4px rgb(218, 180, 147); -webkit-box-  
shadow:4px 4px 4px 4px rgb(218, 180, 147);  
box-shadow:4px 4px 4px 4px rgb(218, 180,  
147) }
```

Background

The CSS property to change the background color of an element to CIELCh 76, 23.775, 67.659 is called "background". The background property can be set on classes, ids or directly on the HTML element.

```
.background, #background, body{  
background: rgb(218, 180, 147) }
```

If only the background color should be changed can be used:

```
.background{ background-color: rgb(218,  
180, 147) }
```

This example shows the color as background, it is applied via the CSS property "background".

To optimize and compress your CSS code, you can use our [online CSS compressor and optimizer](#) based on csstidy. If you want to create a linear or radial gradient as background or border, check our [CSS Gradient Generator](#).

Hey! You found this booklet interesting? Support Converting Colors with the new Membership Option!

The pro membership hides all ads, plus gives you double the colors in the color bucket, and more awesome pro features!

[Learn more, Memberships starting at \\$2.50/m!](#)

**Follow me
on Twitter!**

@ConvertingColor