

Converting Colors

CIELCh(76, 27.954, 70.786)

Have a look what the booklet for
CIELCh(76, 27.954, 70.786) contains.

CIELCh(76, 28.074, 70.784)	3
<i>Conversions</i>	4
<i>Details</i>	6
<i>Harmonies</i>	11
<i>Previews</i>	20
<i>Color Blindness Simulation</i>	23
<i>CSS Examples</i>	26

Color

CIELCh(76, 28.074, 70.784)

Conversions

Conversions Part 1

Format	Color
Hex	DDB48B
RGB	221, 180, 139
RGB Percent	87%, 71%, 55%
CMY	0.1333, 0.2940, 0.4548
CMYK	0.00, 0.19, 0.37, 0.13
HSL	30°, 55%, 71%
HSV	30°, 37%, 87%
XYZ	50.8087, 49.8872, 31.3824
YIQ	187.5850, 37.5970, -4.0590

Conversions

Conversions Part 2

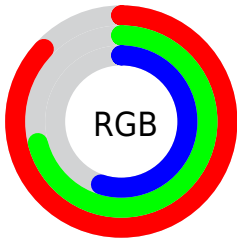
Format	Color
R _Y B	221, 221, 139
Decimal	14529675
CIE Lab	76.00, 9.24, 26.51
CIE LCh	76, 28.074, 70.784
Yxy	49.8872, 0.3847, 0.3777
Android (android.graphics.Color)	4292719755 (0xFFDDB48B)
YUV	187.5850, -23.9524, 29.3050
Hunter-Lab	70.6309, 4.8008, 23.0982

Details

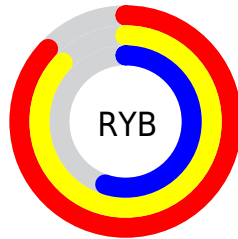
The CIELCh color **76, 28.074, 70.784** is a light color, and the websafe version is hex **FFCC99**. A complement of this color would be **72, 25.267, 261.671**, and the grayscale version is **76, 0.009, 296.813**.

A 20% lighter version of the original color is **94, 23.211, 90.121**, and **56, 27.698, 70.474** is the 20% darker color. If you saturate the color by 10%, you get **73, 36.474, 69.516**, and if you desaturate by 10%, it is **79, 20.025, 72.051**.

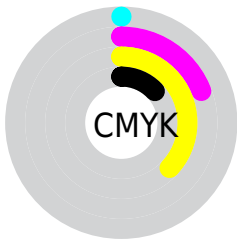
Distribution



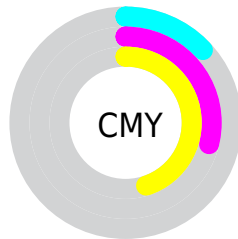
- Red (87%)
- Green (71%)
- Blue (55%)



- Red (87%)
- Yellow (87%)
- Blue (55%)



- Cyan (0%)
- Magenta (19%)
- Yellow (37%)
- Black (13%)



- Cyan (13%)
- Magenta (29%)
- Yellow (45%)


Brightness & Saturation Gradients

These gradients show how the CIELCh color 76, 28.074, 70.784 changes by changing the brightness by 10 percent. The first figure shows a shift by +10% for each color and the second figure -10%.

Similar to the brightness gradients but the following saturation gradients show a change of the CIELCh color 76, 28.074, 70.784 by changing the saturation by 10% instead.

 76, 28.074, 70.784

 76, 28.074, 70.784

 100, 28.074,
70.784

 66, 28.074, 70.784

 96, 28.074, 70.784

 56, 28.074, 70.784

 46, 28.074, 70.784

 36, 28.074, 70.784

 26, 28.074, 70.784

 16, 28.074, 70.784

 6, 28.074, 70.784

 0, 28.074, 70.784

 76, 28.074, 70.784

 76, 28.074, 70.784

73, 36.474, 69.516

79, 20.025, 72.051

70, 45.154, 68.219

82, 12.339, 73.294

67, 53.937, 66.861

86, 5.003, 74.484

64, 62.431, 65.343

89, 2.009, 255.973

62, 69.897, 63.460

92, 8.728, 257.001

59, 75.308, 60.884

95, 9.532, 226.940

59, 76.698, 60.118

98, 11.473,
198.740

Harmonies

Complementary

The Complementary color scheme is a pair of colors which are on the opposite of each other on the color wheel.



76, 28.074, 70.784



72, 25.267, 261.671

Rectangle

The Rectangle color scheme consists of four colors that form a rectangle on the color wheel.



76, 28.074, 70.784



76, 28.074, 120.784



76, 28.074, 250.784



76, 28.074, 300.784

Sweetspot

The Sweet Spot groups the original color and five complimentary colors.



76, 28.074, 70.790



96, 8.787, 74.023



67, 37.743, 347.282



51, 5.923, 73.859



0, 0.000, 0.000



53, 0.007, 296.813

Same Dimension

The Same Dimension uses a secret algorithm to generate beautiful new colors.



76, 28.074, 70.790



84, 38.980, 69.739



86, 42.018, 106.599



44, 3.997, 74.218



47, 63.777, 60.787



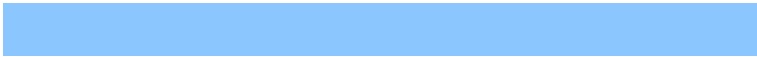
10, 18.352, 59.795

Inverse Universe

The Inverse Universe completely reimagines the original color for something new.



72, 25.267, 261.671



78, 34.182, 263.693



61, 46.184, 295.055



44, 3.910, 256.714



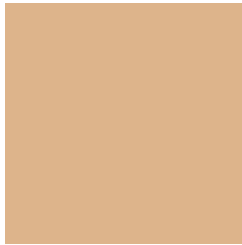
37, 53.845, 283.849



7, 18.120, 273.802

Previews

White Background



This preview shows how the CIELCh color 76, 28.074, 70.784 looks on a white background.

Color Contrast Check

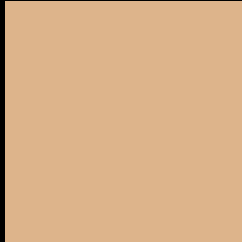
Large Text (above 18pt) WCAG AA × Fail

Any Text WCAG AA × Fail

Large Text (above 18pt) WCAG AAA × Fail

Any Text WCAG AAA × Fail

Black Background



This preview shows how the CIELCh color 76, 28.074, 70.784 looks on a black background.

Color Contrast Check

Large Text (above 18pt) WCAG AA ✓ Pass

Any Text WCAG AA ✓ Pass

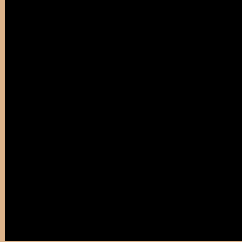
Large Text (above 18pt) WCAG AAA ✓ Pass

Any Text WCAG AAA ✓ Pass

If you want to check with other color combinations, try the [Color Contrast Checker](#).

CIELCh 76, 28.074, 70.784

Background



This preview shows how black text looks on a background with the CIELCh color 76, 28.074, 70.784.



This preview shows how white text looks on a background with the CIELCh color 76, 28.074, 70.784.

Color Blindness Simulation

Color vision deficiency is a very complex topic, and I could not describe the different causes any better than Wikipedia does, so if you want to learn more, you should check out their [article about color blindness](#).

Dichromacy



Original Color

76, 28.074, 70.784

Protanopia

76, 24.705, 94.544

Deuteranopia

76, 28.344, 70.128



Tritanopia
76, 20.925, 1.941

Trichromacy



Original Color
76, 28.074, 70.784

Protanomaly
76, 25.116, 84.890

Deuteranomaly
76, 28.344, 70.128

Tritanomaly
76, 19.224, 30.477

Monochromacy



Original Color
76, 28.074, 70.784

Achromatopsia
76, 0.009, 296.813

Achromatomaly
76, 9.927, 73.556

CSS Examples

Text

The CSS property to change the color of the text to CIELCh 76, 28.074, 70.784 is called "color". The color property can be set on classes, ids or directly on the HTML element.

This example shows how text in the color `rgb(221, 180, 139)` looks like.

```
.text, #text, p{  
    color:rgb(221, 180, 139)  
}
```

If you want to add a text shadow in that color use the text-shadow property, you can generate a text shadow directly with our [CSS Text Shadow Generator](#).

Here you see how black text with a 4 pixel rgb(221, 180, 139) colored shadow looks like.

```
.shadow{ text-shadow: 4px 4px 2px rgb(221, 180, 139) }
```

Border

The CSS property to change the border of an element to CIELCh 76, 28.074, 70.784 is called "border". The border property can be set on classes, ids or directly on the HTML element.

This example shows the color as border, it can be applied via the CSS property "border" or "border-color".

```
.border, #border, table{ border:4px solid rgb(221, 180, 139) }
```

If only the border color should be changed use the property `border-color`.

```
.border{ border-color:rgb(221, 180, 139) }
```

If you want to add a box shadow in that color use:

Here you see how a box with a 4 pixel `rgb(221, 180, 139)` colored shadow looks like.

```
.boxshadow{ -moz-box-shadow:4px 4px 4px  
4px rgb(221, 180, 139); -webkit-box-  
shadow:4px 4px 4px 4px rgb(221, 180, 139);  
box-shadow:4px 4px 4px 4px rgb(221, 180,  
139) }
```

Background

The CSS property to change the background color of an element to CIELCh 76, 28.074, 70.784 is called "background". The background property can be set on classes, ids or directly on the HTML element.

```
.background, #background, body{  
background: rgb(221, 180, 139) }
```

If only the background color should be changed can be used:

```
.background{ background-color: rgb(221,  
180, 139) }
```

This example shows the color as background, it is applied via the CSS property "background".

To optimize and compress your CSS code, you can use our [online CSS compressor and optimizer](#) based on csstidy. If you want to create a linear or radial gradient as background or border, check our [CSS Gradient Generator](#).

Hey! You found this booklet interesting? Support Converting Colors with the new Membership Option!

The pro membership hides all ads, plus gives you double the colors in the color bucket, and more awesome pro features!

[Learn more, Memberships starting at \\$2.50/m!](#)

**Follow me
on Twitter!**

@ConvertingColor