

Converting Colors

CIELCh(76, 28.200, 64.369)

Have a look what the booklet for
CIELCh(76, 28.200, 64.369) contains.

CIELCh(76, 28.159, 64.517)	3
<i>Conversions</i>	4
<i>Details</i>	6
<i>Harmonies</i>	11
<i>Previews</i>	20
<i>Color Blindness Simulation</i>	23
<i>CSS Examples</i>	26

Color

CIELCh(76, 28.159, 64.517)

Conversions

Conversions Part 1

Format	Color
Hex	E1B28D
RGB	225, 178, 141
RGB Percent	88%, 70%, 55%
CMY	0.1168, 0.3012, 0.4463
CMYK	0.00, 0.21, 0.37, 0.12
HSL	26°, 59%, 72%
HSV	26°, 37%, 88%
XYZ	51.8964, 49.8872, 32.1658
YIQ	187.8350, 39.8890, -1.5430

Conversions

Conversions Part 2

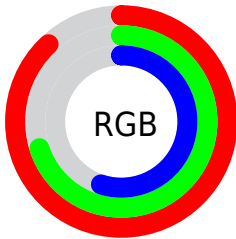
Format	Color
R _Y B	225, 207, 141
Decimal	14791309
CIE Lab	76.00, 12.12, 25.42
CIE LCh	76, 28.159, 64.517
Yxy	49.8872, 0.3874, 0.3724
Android (android.graphics.Color)	4292981389 (0xFFE1B28D)
YUV	187.8350, -23.0897, 32.5937
Hunter-Lab	70.6309, 7.5496, 22.4406

Details

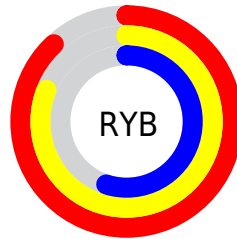
The CIELCh color **76, 28.159, 64.517** is a light color, and the websafe version is hex **FFCC99**. A complement of this color would be **74, 24.304, 254.703**, and the grayscale version is **76, 0.009, 296.813**.

A 20% lighter version of the original color is **93, 21.586, 86.713**, and **56, 28.309, 64.477** is the 20% darker color. If you saturate the color by 10%, you get **73, 36.754, 63.437**, and if you desaturate by 10%, it is **80, 20.016, 65.626**.

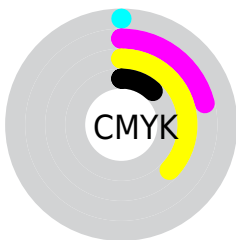
Distribution



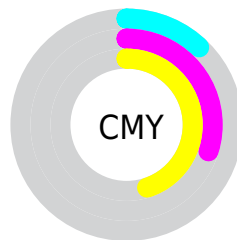
- Red (88%)
- Green (70%)
- Blue (55%)



- Red (88%)
- Yellow (81%)
- Blue (55%)



- Cyan (0%)
- Magenta (21%)
- Yellow (37%)
- Black (12%)



- Cyan (12%)
- Magenta (30%)
- Yellow (45%)

Brightness & Saturation Gradients

These gradients show how the CIELCh color 76, 28.159, 64.517 changes by changing the brightness by 10 percent. The first figure shows a shift by +10% for each color and the second figure -10%.

Similar to the brightness gradients but the following saturation gradients show a change of the CIELCh color 76, 28.159, 64.517 by changing the saturation by 10% instead.

 76, 28.159, 64.517

 76, 28.159, 64.517

 100, 28.159,
64.517

 66, 28.159, 64.517

 96, 28.159, 64.517

 56, 28.159, 64.517

 46, 28.159, 64.517

 36, 28.159, 64.517

 26, 28.159, 64.517

 16, 28.159, 64.517

 6, 28.159, 64.517

 0, 28.159, 64.517

 76, 28.159, 64.517

 76, 28.159, 64.517

73, 36.754, 63.437

80, 20.016, 65.626

69, 45.750, 62.359

83, 12.324, 66.734

66, 54.989, 61.253

87, 5.057, 67.807

63, 64.102, 60.016

91, 1.824, 249.265

60, 72.331, 58.415

94, 8.358, 250.174

58, 78.546, 56.074

98, 9.702, 202.499

57, 80.057, 55.440

98, 10.104,
198.833

Harmonies

Complementary

The Complementary color scheme is a pair of colors which are on the opposite of each other on the color wheel.



76, 28.159, 64.517



74, 24.304, 254.703

Rectangle

The Rectangle color scheme consists of four colors that form a rectangle on the color wheel.



76, 28.159, 64.517



76, 28.159, 114.517



76, 28.159, 244.517



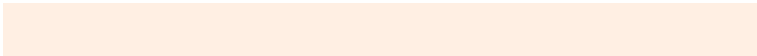
76, 28.159, 294.517

Sweetspot

The Sweet Spot groups the original color and five complimentary colors.



76, 28.159, 64.523



95, 8.511, 67.414



69, 40.093, 343.577



50, 5.741, 67.267



0, 0.000, 0.000



53, 0.007, 296.813

Same Dimension

The Same Dimension uses a secret algorithm to generate beautiful new colors.



76, 28.159, 64.523



82, 38.448, 63.652



86, 40.354, 103.509



45, 3.942, 67.588



45, 66.264, 56.105



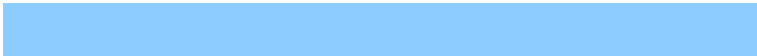
10, 19.768, 53.619

Inverse Universe

The Inverse Universe completely reimagines the original color for something new.



74, 24.304, 254.703



80, 32.003, 256.619



63, 43.815, 292.498



45, 3.821, 249.930



41, 48.292, 277.393



9, 17.181, 267.616

Previews

White Background



This preview shows how the CIELCh color 76, 28.159, 64.517 looks on a white background.

Color Contrast Check

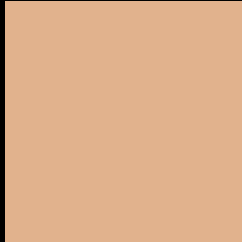
Large Text (above 18pt) WCAG AA × Fail

Any Text WCAG AA × Fail

Large Text (above 18pt) WCAG AAA × Fail

Any Text WCAG AAA × Fail

Black Background



This preview shows how the CIELCh color 76, 28.159, 64.517 looks on a black background.

Color Contrast Check

Large Text (above 18pt) WCAG AA ✓ Pass

Any Text WCAG AA ✓ Pass

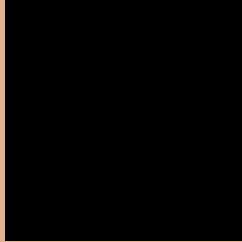
Large Text (above 18pt) WCAG AAA ✓ Pass

Any Text WCAG AAA ✓ Pass

If you want to check with other color combinations, try the [Color Contrast Checker](#).

CIELCh 76, 28.159, 64.517

Background



This preview shows how black text looks on a background with the CIELCh color 76, 28.159, 64.517.



This preview shows how white text looks on a background with the CIELCh color 76, 28.159, 64.517.

Color Blindness Simulation

Color vision deficiency is a very complex topic, and I could not describe the different causes any better than Wikipedia does, so if you want to learn more, you should check out their [article about color blindness](#).

Dichromacy



Original Color

76, 28.159, 64.517

Protanopia

76, 23.057, 94.838

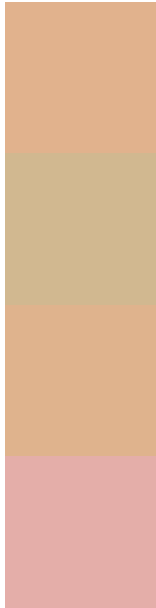
Deuteranopia

76, 27.195, 69.607



Tritanopia
76, 23.180, 4.138

Trichromacy



Original Color
76, 28.159, 64.517

Protanomaly
76, 23.818, 82.735

Deuteranomaly
76, 27.647, 67.015

Tritanomaly
76, 21.557, 28.241

Monochromacy



Original Color
76, 28.159, 64.517

Achromatopsia
76, 0.009, 296.813

Achromatomaly
76, 9.871, 64.544

CSS Examples

Text

The CSS property to change the color of the text to CIELCh 76, 28.159, 64.517 is called "color". The color property can be set on classes, ids or directly on the HTML element.

This example shows how text in the color `rgb(225, 178, 141)` looks like.

```
.text, #text, p{  
    color:rgb(225, 178, 141)  
}
```

If you want to add a text shadow in that color use the text-shadow property, you can generate a text shadow directly with our [CSS Text Shadow Generator](#).

Here you see how black text with a 4 pixel rgb(225, 178, 141) colored shadow looks like.

```
.shadow{ text-shadow: 4px 4px 2px rgb(225, 178, 141) }
```

Border

The CSS property to change the border of an element to CIELCh 76, 28.159, 64.517 is called "border". The border property can be set on classes, ids or directly on the HTML element.

This example shows the color as border, it can be applied via the CSS property "border" or "border-color".

```
.border, #border, table{ border:4px solid rgb(225, 178, 141) }
```

If only the border color should be changed use the property `border-color`.

```
.border{ border-color:rgb(225, 178, 141) }
```

If you want to add a box shadow in that color use:

Here you see how a box with a 4 pixel `rgb(225, 178, 141)` colored shadow looks like.

```
.boxshadow{ -moz-box-shadow:4px 4px 4px  
4px rgb(225, 178, 141); -webkit-box-  
shadow:4px 4px 4px 4px rgb(225, 178, 141);  
box-shadow:4px 4px 4px 4px rgb(225, 178,  
141) }
```

Background

The CSS property to change the background color of an element to CIELCh 76, 28.159, 64.517 is called "background". The background property can be set on classes, ids or directly on the HTML element.

```
.background, #background, body{  
background: rgb(225, 178, 141) }
```

If only the background color should be changed can be used:

```
.background{ background-color: rgb(225,  
178, 141) }
```

This example shows the color as background, it is applied via the CSS property "background".

To optimize and compress your CSS code, you can use our [online CSS compressor and optimizer](#) based on csstidy. If you want to create a linear or radial gradient as background or border, check our [CSS Gradient Generator](#).

Hey! You found this booklet interesting? Support Converting Colors with the new Membership Option!

The pro membership hides all ads, plus gives you double the colors in the color bucket, and more awesome pro features!

[Learn more, Memberships starting at \\$2.50/m!](#)

**Follow me
on Twitter!**

@ConvertingColor