

Converting Colors

CIELCh(76, 36.556, 7.338)

Have a look what the booklet for
CIELCh(76, 36.556, 7.338) contains.

CIELCh(76, 36.284, 7.742)	3
<i>Conversions</i>	4
<i>Details</i>	6
<i>Harmonies</i>	11
<i>Previews</i>	20
<i>Color Blindness Simulation</i>	23
<i>CSS Examples</i>	26

Color

CIELCh(76, 36.284, 7.742)

Conversions

Conversions Part 1

Format	Color
Hex	FDA2B4
RGB	253, 162, 180
RGB Percent	99%, 64%, 71%
CMY	0.0088, 0.3655, 0.2950
CMYK	0.00, 0.36, 0.29, 0.01
HSL	348°, 95%, 81%
HSV	348°, 36%, 99%
XYZ	61.5179, 49.8872, 49.4504
YIQ	191.2610, 48.4580, 24.8900

Conversions

Conversions Part 2

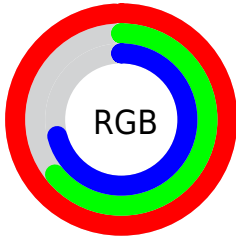
Format	Color
R _Y B	253, 162, 180
Decimal	16622260
CIE _{Lab}	76.00, 35.95, 4.89
CIE _{LCh}	76, 36.284, 7.742
Y _{xy}	49.8872, 0.3824, 0.3101
Android (android.graphics.Color)	4294812340 (0xFFFDA2B4)
Y _{UV}	191.2610, -5.5517, 54.1451
Hunter-Lab	70.6309, 31.8654, 7.9313

Details

The CIELCh color **76, 36.284, 7.742** is a light color, and the websafe version is hex **FF9999**. A complement of this color would be **93, 31.069, 179.977**, and the grayscale version is **77, 0.009, 296.813**.

A 20% lighter version of the original color is **91, 16.241, 345.629**, and **56, 36.078, 7.981** is the 20% darker color. If you saturate the color by 10%, you get **70, 47.041, 9.614**, and if you desaturate by 10%, it is **82, 25.668, 6.231**.

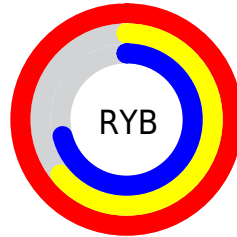
Distribution



Red (99%)

Green (64%)

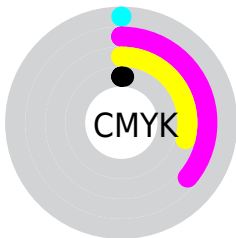
Blue (71%)



Red (99%)

Yellow (64%)

Blue (71%)

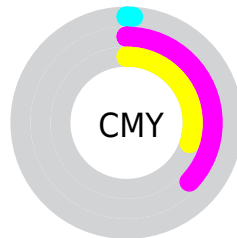


Cyan (0%)

Magenta (36%)

Yellow (29%)

Black (1%)



Cyan (1%)

Magenta (37%)

Yellow (30%)

Brightness & Saturation Gradients

These gradients show how the CIELCh color 76, 36.284, 7.742 changes by changing the brightness by 10 percent. The first figure shows a shift by +10% for each color and the second figure -10%.

Similar to the brightness gradients but the following saturation gradients show a change of the CIELCh color 76, 36.284, 7.742 by changing the saturation by 10% instead.

 76, 36.284, 7.742  76, 36.284, 7.742

 100, 36.284, 7.742  66, 36.284, 7.742

 96, 36.284, 7.742  56, 36.284, 7.742

 46, 36.284, 7.742

 36, 36.284, 7.742

 26, 36.284, 7.742

 16, 36.284, 7.742

 6, 36.284, 7.742

 0, 36.284, 7.742

 76, 36.284, 7.742  76, 36.284, 7.742

70, 47.041, 9.614

82, 25.668, 6.231

65, 57.624, 11.963

89, 15.411, 4.973

61, 67.617, 14.945

95, 5.624, 3.862

57, 76.611, 18.712

100, 0.779,
200.207

55, 84.368, 23.338

53, 90.929, 28.648

53, 93.396, 30.751

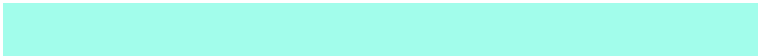
Harmonies

Complementary

The Complementary color scheme is a pair of colors which are on the opposite of each other on the color wheel.



76, 36.284, 7.742



93, 31.069, 179.977

Rectangle

The Rectangle color scheme consists of four colors that form a rectangle on the color wheel.



76, 36.284, 7.742



76, 36.284, 57.742



76, 36.284, 187.742



76, 36.284, 237.742

Sweetspot

The Sweet Spot groups the original color and five complimentary colors.



76, 36.281, 7.745



93, 10.538, 4.413



76, 54.284, 320.409



48, 7.106, 4.562



0, 0.000, 0.000



53, 0.007, 296.813

Same Dimension

The Same Dimension uses a secret algorithm to generate beautiful new colors.



76, 36.281, 7.745



73, 44.140, 9.015



82, 29.902, 49.498



50, 5.425, 4.250



40, 75.053, 29.760



10, 31.997, 18.844

Inverse Universe

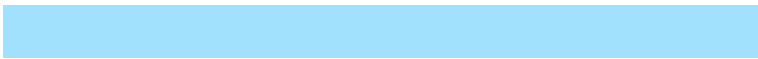
The Inverse Universe completely reimagines the original color for something new.



76, 36.281, 7.745



73, 44.140, 9.015



86, 23.858, 235.477



50, 5.425, 4.250



40, 75.053, 29.760



10, 31.997, 18.844

Previews

White Background



This preview shows how the CIELCh color 76, 36.284, 7.742 looks on a white background.

Color Contrast Check

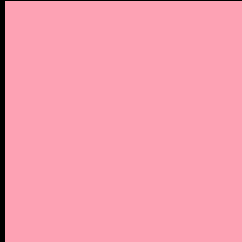
Large Text (above 18pt) WCAG AA × Fail

Any Text WCAG AA × Fail

Large Text (above 18pt) WCAG AAA × Fail

Any Text WCAG AAA × Fail

Black Background



This preview shows how the CIELCh color 76, 36.284, 7.742 looks on a black background.

Color Contrast Check

Large Text (above 18pt) WCAG AA ✓ Pass

Any Text WCAG AA ✓ Pass

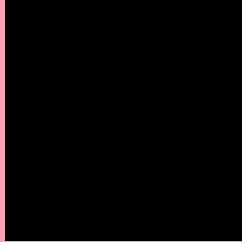
Large Text (above 18pt) WCAG AAA ✓ Pass

Any Text WCAG AAA ✓ Pass

If you want to check with other color combinations, try the [Color Contrast Checker](#).

CIELCh 76, 36.284, 7.742

Background



This preview shows how black text looks on a background with the CIELCh color 76, 36.284, 7.742.



This preview shows how white text looks on a background with the CIELCh color 76, 36.284, 7.742.

Color Blindness Simulation

Color vision deficiency is a very complex topic, and I could not describe the different causes any better than Wikipedia does, so if you want to learn more, you should check out their [article about color blindness](#).

Dichromacy



Original Color

76, 36.284, 7.742

Protanopia

76, 3.854, 301.462

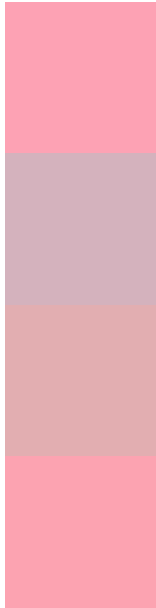
Deuteranopia

76, 11.524, 33.636



Tritanopia
76, 35.255, 12.421

Trichromacy



Original Color
76, 36.284, 7.742

Protanomaly
76, 14.093, 355.900

Deuteranomaly
76, 20.245, 16.641

Tritanomaly
76, 35.301, 10.705

Monochromacy



Original Color
76, 36.284, 7.742

Achromatopsia
77, 0.009, 296.813

Achromatomaly
76, 13.032, 3.822

CSS Examples

Text

The CSS property to change the color of the text to CIELCh 76, 36.284, 7.742 is called "color". The color property can be set on classes, ids or directly on the HTML element.

This example shows how text in the color `rgb(253, 162, 180)` looks like.

```
.text, #text, p{  
    color:rgb(253, 162, 180)  
}
```

If you want to add a text shadow in that color use the text-shadow property, you can generate a text shadow directly with our [CSS Text Shadow Generator](#).

Here you see how black text with a 4 pixel rgb(253, 162, 180) colored shadow looks like.

```
.shadow{ text-shadow: 4px 4px 2px rgb(253, 162, 180) }
```

Border

The CSS property to change the border of an element to CIELCh 76, 36.284, 7.742 is called "border". The border property can be set on classes, ids or directly on the HTML element.

This example shows the color as border, it can be applied via the CSS property "border" or "border-color".

```
.border, #border, table{ border:4px solid rgb(253, 162, 180) }
```

If only the border color should be changed use the property `border-color`.

```
.border{ border-color:rgb(253, 162, 180) }
```

If you want to add a box shadow in that color use:

Here you see how a box with a 4 pixel `rgb(253, 162, 180)` colored shadow looks like.

```
.boxshadow{ -moz-box-shadow:4px 4px 4px  
4px rgb(253, 162, 180); -webkit-box-  
shadow:4px 4px 4px 4px rgb(253, 162, 180);  
box-shadow:4px 4px 4px 4px rgb(253, 162,  
180) }
```

Background

The CSS property to change the background color of an element to CIELCh 76, 36.284, 7.742 is called "background". The background property can be set on classes, ids or directly on the HTML element.

```
.background, #background, body{  
background: rgb(253, 162, 180) }
```

If only the background color should be changed can be used:

```
.background{ background-color: rgb(253,  
162, 180) }
```

This example shows the color as background, it is applied via the CSS property "background".

To optimize and compress your CSS code, you can use our [online CSS compressor and optimizer](#) based on csstidy. If you want to create a linear or radial gradient as background or border, check our [CSS Gradient Generator](#).

Hey! You found this booklet interesting? Support Converting Colors with the new Membership Option!

The pro membership hides all ads, plus gives you double the colors in the color bucket, and more awesome pro features!

[Learn more, Memberships starting at \\$2.50/m!](#)

**Follow me
on Twitter!**

@ConvertingColor