

Converting Colors

CIELCh(76, 37.013, 20.855)

Have a look what the booklet for
CIELCh(76, 37.013, 20.855) contains.

CIELCh(76, 37.142, 20.418)	3
<i>Conversions</i>	4
<i>Details</i>	6
<i>Harmonies</i>	11
<i>Previews</i>	20
<i>Color Blindness Simulation</i>	23
<i>CSS Examples</i>	26

Color

CIELCh(76, 37.142, 20.418)

Conversions

Conversions Part 1

Format	Color
Hex	FFA2A5
RGB	255, 162, 165
RGB Percent	100%, 64%, 65%
CMY	0.0000, 0.3642, 0.3525
CMYK	0.00, 0.36, 0.35, 0.00
HSL	358°, 100%, 82%
HSV	358°, 36%, 100%
XYZ	61.0307, 49.8872, 42.0648
YIQ	190.1490, 54.4650, 20.6490

Conversions

Conversions Part 2

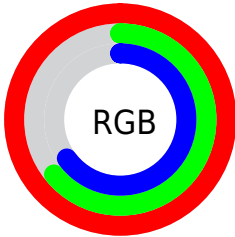
Format	Color
R _Y B	255, 162, 165
Decimal	16753317
CIE Lab	76.00, 34.81, 12.96
CIE LCh	76, 37.142, 20.418
Yxy	49.8872, 0.3989, 0.3261
Android (android.graphics.Color)	4294943397 (0xFFFFA2A5)
YUV	190.1490, -12.3985, 56.8743
Hunter-Lab	70.6309, 30.6341, 14.1310

Details

The CIELCh color **76, 37.142, 20.418** is a light color, and the websafe version is hex **FF9999**. A complement of this color would be **94, 29.111, 194.554**, and the grayscale version is **77, 0.009, 296.813**.

A 20% lighter version of the original color is **90, 13.669, 16.043**, and **56, 37.212, 20.638** is the 20% darker color. If you saturate the color by 10%, you get **70, 48.705, 22.184**, and if you desaturate by 10%, it is **82, 25.998, 19.043**.

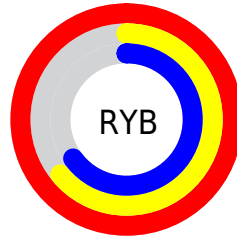
Distribution



Red (100%)

Green (64%)

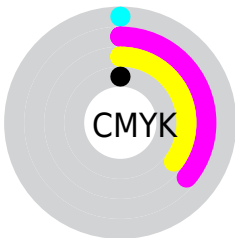
Blue (65%)



Red (100%)

Yellow (64%)

Blue (65%)

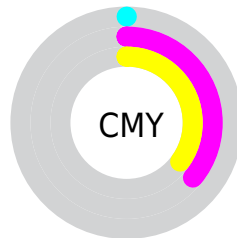


Cyan (0%)

Magenta (36%)

Yellow (35%)

Black (0%)



Cyan (0%)

Magenta (36%)

Yellow (35%)

Brightness & Saturation Gradients

These gradients show how the CIELCh color 76, 37.142, 20.418 changes by changing the brightness by 10 percent. The first figure shows a shift by +10% for each color and the second figure -10%.

Similar to the brightness gradients but the following saturation gradients show a change of the CIELCh color 76, 37.142, 20.418 by changing the saturation by 10% instead.

 76, 37.142, 20.418

 76, 37.142, 20.418


 100, 37.142,
20.418

 66, 37.142, 20.418

 96, 37.142, 20.418

 56, 37.142, 20.418

 46, 37.142, 20.418

 36, 37.142, 20.418

 26, 37.142, 20.418

 16, 37.142, 20.418

 6, 37.142, 20.418

 0, 37.142, 20.418

 76, 37.142, 20.418

 76, 37.142, 20.418

70, 48.705, 22.184

82, 25.998, 19.043

65, 60.606, 24.475

89, 15.576, 17.966

60, 72.431, 27.396

96, 5.866, 17.062

57, 83.732, 30.963

100, 0.012,
296.813

55, 93.876, 34.905

53, 101.512,
38.350

53, 103.330,
39.123

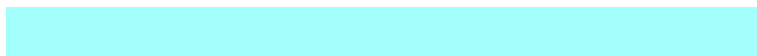
Harmonies

Complementary

The Complementary color scheme is a pair of colors which are on the opposite of each other on the color wheel.



76, 37.142, 20.418



94, 29.111, 194.554

Rectangle

The Rectangle color scheme consists of four colors that form a rectangle on the color wheel.



76, 37.142, 20.418



76, 37.142, 70.418



76, 37.142, 200.418



76, 37.142, 250.418

Sweetspot

The Sweet Spot groups the original color and five complimentary colors.



76, 37.087, 20.413



92, 10.222, 17.467



78, 57.406, 325.444



48, 6.904, 17.588



0, 0.000, 0.000



53, 0.007, 296.813

Same Dimension

The Same Dimension uses a secret algorithm to generate beautiful new colors.



76, 37.087, 20.413



72, 45.854, 21.712



86, 30.554, 67.367



49, 5.254, 17.336



40, 82.820, 38.755



10, 33.103, 25.888

Inverse Universe

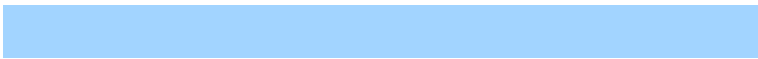
The Inverse Universe completely reimagines the original color for something new.



76, 37.087, 20.413



72, 45.854, 21.712



83, 26.921, 257.740



49, 5.254, 17.336



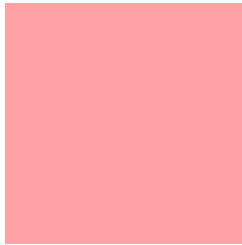
40, 82.820, 38.755



10, 33.103, 25.888

Previews

White Background



This preview shows how the CIELCh color 76, 37.142, 20.418 looks on a white background.

Color Contrast Check

Large Text (above 18pt) WCAG AA × Fail

Any Text WCAG AA × Fail

Large Text (above 18pt) WCAG AAA × Fail

Any Text WCAG AAA × Fail

Black Background



This preview shows how the CIE LCh color 76, 37.142, 20.418 looks on a black background.

Color Contrast Check

Large Text (above 18pt) WCAG AA ✓ Pass

Any Text WCAG AA ✓ Pass

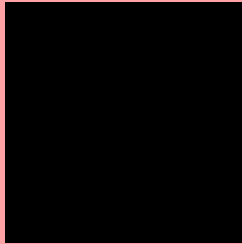
Large Text (above 18pt) WCAG AAA ✓ Pass

Any Text WCAG AAA ✓ Pass

If you want to check with other color combinations, try the [Color Contrast Checker](#).

CIELCh 76, 37.142, 20.418

Background



This preview shows how black text looks on a background with the CIELCh color 76, 37.142, 20.418.



This preview shows how white text looks on a background with the CIELCh color 76, 37.142, 20.418.

Color Blindness Simulation

Color vision deficiency is a very complex topic, and I could not describe the different causes any better than Wikipedia does, so if you want to learn more, you should check out their [article about color blindness](#).

Dichromacy



Original Color

76, 37.142, 20.418

Protanopia

76, 5.319, 84.394

Deuteranopia

76, 17.039, 56.671



Tritanopia
76, 37.285, 13.230

Trichromacy



Original Color
76, 37.142, 20.418



Protanomaly
76, 15.079, 30.753



Deuteranomaly
76, 23.299, 35.681



Tritanomaly
76, 37.313, 15.667

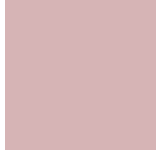
Monochromacy



Original Color
76, 37.142, 20.418



Achromatopsia
77, 0.009, 296.813



Achromatomaly
76, 13.038, 18.123

CSS Examples

Text

The CSS property to change the color of the text to CIELCh 76, 37.142, 20.418 is called "color". The color property can be set on classes, ids or directly on the HTML element.

This example shows how text in the color `rgb(255, 162, 165)` looks like.

```
.text, #text, p{  
    color:rgb(255, 162, 165)  
}
```

If you want to add a text shadow in that color use the text-shadow property, you can generate a text shadow directly with our [CSS Text Shadow Generator](#).

Here you see how black text with a 4 pixel rgb(255, 162, 165) colored shadow looks like.

```
.shadow{ text-shadow: 4px 4px 2px rgb(255, 162, 165) }
```

Border

The CSS property to change the border of an element to CIELCh 76, 37.142, 20.418 is called "border". The border property can be set on classes, ids or directly on the HTML element.

This example shows the color as border, it can be applied via the CSS property "border" or "border-color".

```
.border, #border, table{ border:4px solid rgb(255, 162, 165) }
```

If only the border color should be changed use the property `border-color`.

```
.border{ border-color:rgb(255, 162, 165) }
```

If you want to add a box shadow in that color use:

Here you see how a box with a 4 pixel `rgb(255, 162, 165)` colored shadow looks like.

```
.boxshadow{ -moz-box-shadow:4px 4px 4px  
4px rgb(255, 162, 165); -webkit-box-  
shadow:4px 4px 4px 4px rgb(255, 162, 165);  
box-shadow:4px 4px 4px 4px rgb(255, 162,  
165) }
```

Background

The CSS property to change the background color of an element to CIELCh 76, 37.142, 20.418 is called "background". The background property can be set on classes, ids or directly on the HTML element.

```
.background, #background, body{  
background: rgb(255, 162, 165) }
```

If only the background color should be changed can be used:

```
.background{ background-color: rgb(255,  
162, 165) }
```

This example shows the color as background, it is applied via the CSS property "background".

To optimize and compress your CSS code, you can use our [online CSS compressor and optimizer](#) based on csstidy. If you want to create a linear or radial gradient as background or border, check our [CSS Gradient Generator](#).

Hey! You found this booklet interesting? Support Converting Colors with the new Membership Option!

The pro membership hides all ads, plus gives you double the colors in the color bucket, and more awesome pro features!

[Learn more, Memberships starting at \\$2.50/m!](#)

**Follow me
on Twitter!**

@ConvertingColor