

Converting Colors

CIELCh(76, 4.952, 10.680)

Have a look what the booklet for
CIELCh(76, 4.952, 10.680) contains.

CIELCh(76, 4.993, 7.309)	3
<i>Conversions</i>	4
<i>Details</i>	6
<i>Harmonies</i>	11
<i>Previews</i>	20
<i>Color Blindness Simulation</i>	23
<i>CSS Examples</i>	26

Color

CIELCh(76, 4.993, 7.309)

Conversions

Conversions Part 1

Format	Color
Hex	C5B8BA
RGB	197, 184, 186
RGB Percent	77%, 72%, 73%
CMY	0.2262, 0.2772, 0.2693
CMYK	0.00, 0.07, 0.06, 0.23
HSL	351°, 10%, 75%
HSV	351°, 7%, 77%
XYZ	49.2151, 49.8872, 53.6688
YIQ	188.1150, 7.1060, 3.3780

Conversions

Conversions Part 2

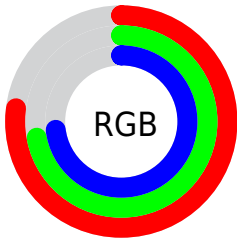
Format	Color
RYB	197, 184, 186
Decimal	12957882
CIELab	76.00, 4.95, 0.64
CIELCh	76, 4.993, 7.309
Yxy	49.8872, 0.3221, 0.3265
Android (android.graphics.Color)	4291147962 (0xFFC5B8BA)
YUV	188.1150, -1.0427, 7.7921
Hunter-Lab	70.6309, 0.7735, 4.3902

Details

The CIELCh color $76, 4.993, 7.309$ is a light color, and the websafe version is hex `CCCCCC`. A complement of this color would be $79, 4.845, 186.405$, and the grayscale version is $76, 0.009, 296.813$.

A 20% lighter version of the original color is $96, 5.096, 8.061$, and $56, 4.931, 6.481$ is the 20% darker color. If you saturate the color by 10%, you get $71, 12.936, 8.396$, and if you desaturate by 10%, it is $82, 2.503, 186.786$.

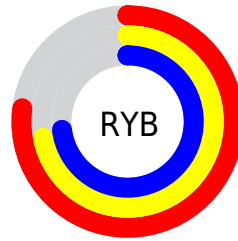
Distribution



Red (77%)

Green (72%)

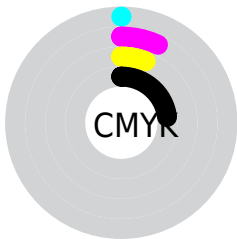
Blue (73%)



Red (77%)

Yellow (72%)

Blue (73%)

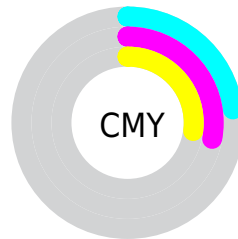


Cyan (0%)

Magenta (7%)

Yellow (6%)

Black (23%)



Cyan (23%)

Magenta (28%)

Yellow (27%)

Brightness & Saturation Gradients

These gradients show how the CIELCh color 76, 4.993, 7.309 changes by changing the brightness by 10 percent. The first figure shows a shift by +10% for each color and the second figure -10%.

Similar to the brightness gradients but the following saturation gradients show a change of the CIELCh color 76, 4.993, 7.309 by changing the saturation by 10% instead.

■ 76, 4.993, 7.309

■ 76, 4.993, 7.309

■ 100, 4.993, 7.309

■ 66, 4.993, 7.309

■ 96, 4.993, 7.309

■ 56, 4.993, 7.309

■ 46, 4.993, 7.309

■ 36, 4.993, 7.309

■ 26, 4.993, 7.309

■ 16, 4.993, 7.309

■ 6, 4.993, 7.309

■ 0, 4.993, 7.309

■ 76, 4.993, 7.309

■ 76, 4.993, 7.309

71, 12.936, 8.396

82, 2.503, 186.786

65, 21.307, 9.621

87, 9.555, 185.903

60, 30.025, 11.110

93, 16.191,
185.245

56, 38.942, 12.959

96, 19.032,
195.334

51, 47.819, 15.290

48, 56.348, 18.244

96, 18.914,
198.256

45, 64.214, 21.949

43, 71.203, 26.426

42, 77.242, 31.399

Harmonies

Complementary

The Complementary color scheme is a pair of colors which are on the opposite of each other on the color wheel.



76, 4.993, 7.309



79, 4.845, 186.405

Rectangle

The Rectangle color scheme consists of four colors that form a rectangle on the color wheel.



76, 4.993, 7.309



76, 4.993, 57.309



76, 4.993, 187.309



76, 4.993, 237.309

Sweetspot

The Sweet Spot groups the original color and five complimentary colors.



76, 4.991, 7.326



99, 1.843, 6.685



76, 8.086, 320.068



53, 1.048, 6.658



0, 0.000, 0.000



53, 0.007, 296.813

Same Dimension

The Same Dimension uses a secret algorithm to generate beautiful new colors.



76, 4.991, 7.326



95, 7.497, 7.489



77, 3.982, 55.059



39, 4.359, 7.622



34, 68.273, 32.197



3, 16.067, 11.494

Inverse Universe

The Inverse Universe completely reimagines the original color for something new.



76, 4.991, 7.326



95, 7.497, 7.489



78, 3.861, 236.384



39, 4.359, 7.622



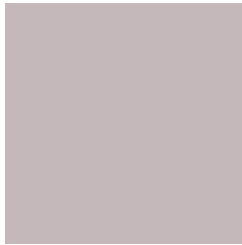
34, 68.273, 32.197



3, 16.067, 11.494

Previews

White Background



This preview shows how the CIELCh color 76, 4.993, 7.309 looks on a white background.

Color Contrast Check

Large Text (above 18pt) WCAG AA × Fail

Any Text WCAG AA × Fail

Large Text (above 18pt) WCAG AAA × Fail

Any Text WCAG AAA × Fail

Black Background



This preview shows how the CIELCh color 76, 4.993, 7.309 looks on a black background.

Color Contrast Check

Large Text (above 18pt) WCAG AA ✓ Pass

Any Text WCAG AA ✓ Pass

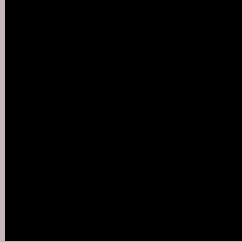
Large Text (above 18pt) WCAG AAA ✓ Pass

Any Text WCAG AAA ✓ Pass

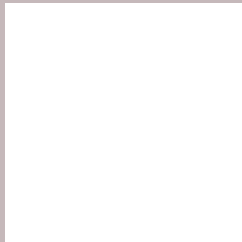
If you want to check with other color combinations, try the [Color Contrast Checker](#).

CIELCh 76, 4.993, 7.309

Background



This preview shows how black text looks on a background with the CIELCh color 76, 4.993, 7.309.



This preview shows how white text looks on a background with the CIELCh color 76, 4.993, 7.309.

Color Blindness Simulation

Color vision deficiency is a very complex topic, and I could not describe the different causes any better than Wikipedia does, so if you want to learn more, you should check out their [article about color blindness](#).

Dichromacy



Original Color


76, 4.993, 7.309

Protanopia

76, 2.159, 349.446

Deuteranopia

76, 9.595, 0.597



Tritanopia
76, 9.601, 328.482

Trichromacy



Original Color

76, 4.993, 7.309

Protanomaly

76, 3.179, 359.746

Deuteranomaly

76, 7.985, 0.399

Tritanomaly

76, 7.764, 336.150

Monochromacy



Original Color

76, 4.993, 7.309

Achromatopsia

76, 0.009, 296.813

Achromatomaly

76, 1.487, 19.172

CSS Examples

Text

The CSS property to change the color of the text to CIELCh 76, 4.993, 7.309 is called "color". The color property can be set on classes, ids or directly on the HTML element.

This example shows how text in the color `rgb(197, 184, 186)` looks like.

```
.text, #text, p{  
    color:rgb(197, 184, 186)  
}
```

If you want to add a text shadow in that color use the text-shadow property, you can generate a text shadow directly with our [CSS Text Shadow Generator](#).

Here you see how black text with a 4 pixel rgb(197, 184, 186) colored shadow looks like.

```
.shadow{ text-shadow: 4px 4px 2px rgb(197, 184, 186) }
```

Border

The CSS property to change the border of an element to CIELCh 76, 4.993, 7.309 is called "border". The border property can be set on classes, ids or directly on the HTML element.

This example shows the color as border, it can be applied via the CSS property "border" or "border-color".

```
.border, #border, table{ border:4px solid rgb(197, 184, 186) }
```

If only the border color should be changed use the property `border-color`.

```
.border{ border-color:rgb(197, 184, 186) }
```

If you want to add a box shadow in that color use:

Here you see how a box with a 4 pixel `rgb(197, 184, 186)` colored shadow looks like.

```
.boxshadow{ -moz-box-shadow:4px 4px 4px  
4px rgb(197, 184, 186); -webkit-box-  
shadow:4px 4px 4px 4px rgb(197, 184, 186);  
box-shadow:4px 4px 4px 4px rgb(197, 184,  
186) }
```

Background

The CSS property to change the background color of an element to CIELCh 76, 4.993, 7.309 is called "background". The background property can be set on classes, ids or directly on the HTML element.

```
.background, #background, body{  
background: rgb(197, 184, 186) }
```

If only the background color should be changed can be used:

```
.background{ background-color: rgb(197,  
184, 186) }
```

This example shows the color as background, it is applied via the CSS property "background".

To optimize and compress your CSS code, you can use our [online CSS compressor and optimizer](#) based on csstidy. If you want to create a linear or radial gradient as background or border, check our [CSS Gradient Generator](#).

Hey! You found this booklet interesting? Support Converting Colors with the new Membership Option!

The pro membership hides all ads, plus gives you double the colors in the color bucket, and more awesome pro features!

[Learn more, Memberships starting at \\$2.50/m!](#)

**Follow me
on Twitter!**

@ConvertingColor