

Converting Colors

CIELCh(76, 5.739, 46.922)

Have a look what the booklet for
CIELCh(76, 5.739, 46.922) contains.

CIELCh(76, 5.601, 48.222)	3
<i>Conversions</i>	4
<i>Details</i>	6
<i>Harmonies</i>	11
<i>Previews</i>	20
<i>Color Blindness Simulation</i>	23
<i>CSS Examples</i>	26

Color

CIELCh(76, 5.601, 48.222)

Conversions

Conversions Part 1

Format	Color
Hex	C6B9B4
RGB	198, 185, 180
RGB Percent	78%, 73%, 71%
CMY	0.2243, 0.2752, 0.2948
CMYK	0.00, 0.07, 0.09, 0.22
HSL	17°, 14%, 74%
HSV	17°, 9%, 78%
XYZ	48.7676, 49.8872, 50.1397
YIQ	188.3170, 9.3530, 1.2010

Conversions

Conversions Part 2

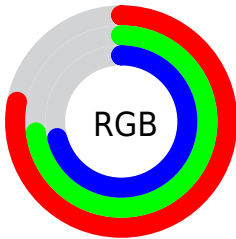
Format	Color
RYB	198, 187, 180
Decimal	13023668
CIELab	76.00, 3.73, 4.18
CIElCh	76, 5.601, 48.222
Yxy	49.8872, 0.3278, 0.3353
Android (android.graphics.Color)	4291213748 (0xFFC6B9B4)
YUV	188.3170, -4.1003, 8.4920
Hunter-Lab	70.6309, -0.3576, 7.3526

Details

The CIELCh color $76, 5.601, 48.222$ is a light color, and the websafe version is hex `CCCCCC`. A complement of this color would be $77, 5.325, 229.520$, and the grayscale version is $76, 0.009, 296.813$.

A 20% lighter version of the original color is $96, 5.628, 46.539$, and $56, 5.642, 50.050$ is the 20% darker color. If you saturate the color by 10%, you get $72, 12.223, 47.803$, and if you desaturate by 10%, it is $80, 0.540, 229.840$.

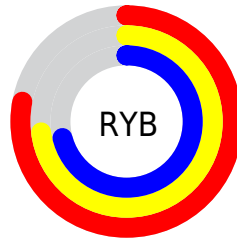
Distribution



Red (78%)

Green (73%)

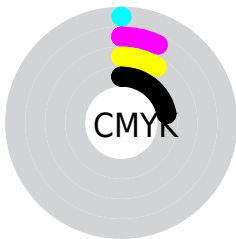
Blue (71%)



Red (78%)

Yellow (73%)

Blue (71%)

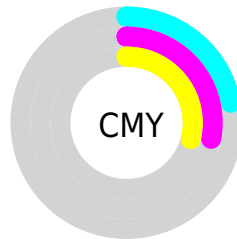


Cyan (0%)

Magenta (7%)

Yellow (9%)

Black (22%)



Cyan (22%)

Magenta (28%)

Yellow (29%)

Brightness & Saturation Gradients

These gradients show how the CIELCh color 76, 5.601, 48.222 changes by changing the brightness by 10 percent. The first figure shows a shift by +10% for each color and the second figure -10%.

Similar to the brightness gradients but the following saturation gradients show a change of the CIELCh color 76, 5.601, 48.222 by changing the saturation by 10% instead.

 76, 5.601, 48.222

 76, 5.601, 48.222

 100, 5.601, 48.222

 66, 5.601, 48.222

 96, 5.601, 48.222

 56, 5.601, 48.222

 46, 5.601, 48.222

 36, 5.601, 48.222

 26, 5.601, 48.222

 16, 5.601, 48.222

 6, 5.601, 48.222

 0, 5.601, 48.222

 76, 5.601, 48.222

 76, 5.601, 48.222

72, 12.223, 47.803

80, 0.540, 229.840

68, 19.374, 47.410

84, 6.248, 229.571

64, 27.091, 47.119

89, 11.575,
230.158

60, 35.387, 46.956

93, 15.757,
224.051

57, 44.224, 46.936

53, 53.475, 47.037

96, 18.767,
198.265

50, 62.813, 47.157

48, 71.497, 47.007

45, 78.511, 46.284

Harmonies

Complementary

The Complementary color scheme is a pair of colors which are on the opposite of each other on the color wheel.



76, 5.601, 48.222



77, 5.325, 229.520

Rectangle

The Rectangle color scheme consists of four colors that form a rectangle on the color wheel.



76, 5.601, 48.222



76, 5.601, 98.222



76, 5.601, 228.222



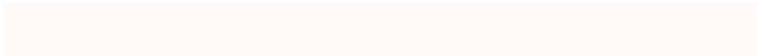
76, 5.601, 278.222

Sweetspot

The Sweet Spot groups the original color and five complimentary colors.



76, 5.601, 48.246



98, 2.216, 48.387



75, 9.783, 333.537



52, 1.686, 48.401



0, 0.000, 0.000



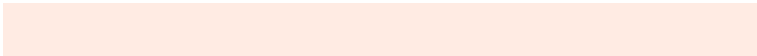
53, 0.007, 296.813

Same Dimension

The Same Dimension uses a secret algorithm to generate beautiful new colors.



76, 5.601, 48.246



94, 8.390, 48.156



78, 7.511, 97.253



40, 3.511, 48.233



37, 68.260, 46.711



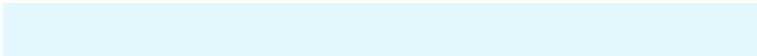
5, 13.678, 36.414

Inverse Universe

The Inverse Universe completely reimagines the original color for something new.



77, 5.325, 229.520



96, 7.876, 229.657



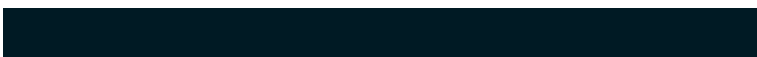
75, 7.577, 279.455



40, 3.332, 229.538



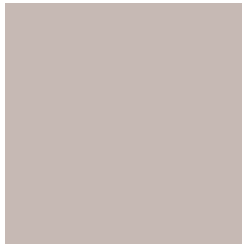
46, 33.815, 251.391



8, 11.239, 240.810

Previews

White Background



This preview shows how the CIELCh color 76, 5.601, 48.222 looks on a white background.

Color Contrast Check

Large Text (above 18pt) WCAG AA × Fail

Any Text WCAG AA × Fail

Large Text (above 18pt) WCAG AAA × Fail

Any Text WCAG AAA × Fail

Black Background



This preview shows how the CIELCh color 76, 5.601, 48.222 looks on a black background.

Color Contrast Check

Large Text (above 18pt) WCAG AA ✓ Pass

Any Text WCAG AA ✓ Pass

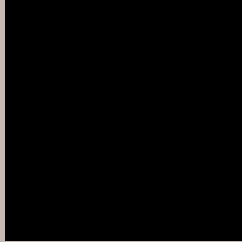
Large Text (above 18pt) WCAG AAA ✓ Pass

Any Text WCAG AAA ✓ Pass

If you want to check with other color combinations, try the [Color Contrast Checker](#).

CIELCh 76, 5.601, 48.222

Background



This preview shows how black text looks on a background with the CIELCh color 76, 5.601, 48.222.



This preview shows how white text looks on a background with the CIELCh color 76, 5.601, 48.222.

Color Blindness Simulation

Color vision deficiency is a very complex topic, and I could not describe the different causes any better than Wikipedia does, so if you want to learn more, you should check out their [article about color blindness](#).

Dichromacy



Original Color

76, 5.601, 48.222

Protanopia

76, 3.711, 79.381

Deuteranopia

76, 10.303, 20.213



Tritanopia
76, 10.485, 329.904

Trichromacy



Original Color
76, 5.601, 48.222

Protanomaly
76, 4.020, 61.271

Deuteranomaly
76, 8.386, 23.686

Tritanomaly
76, 7.366, 344.261

Monochromacy



Original Color
76, 5.601, 48.222

Achromatopsia
76, 0.009, 296.813

Achromatomaly
76, 2.141, 49.342

CSS Examples

Text

The CSS property to change the color of the text to CIELCh 76, 5.601, 48.222 is called "color". The color property can be set on classes, ids or directly on the HTML element.

This example shows how text in the color `rgb(198, 185, 180)` looks like.

```
.text, #text, p{  
    color:rgb(198, 185, 180)  
}
```

If you want to add a text shadow in that color use the text-shadow property, you can generate a text shadow directly with our [CSS Text Shadow Generator](#).

Here you see how black text with a 4 pixel rgb(198, 185, 180) colored shadow looks like.

```
.shadow{ text-shadow: 4px 4px 2px rgb(198, 185, 180) }
```

Border

The CSS property to change the border of an element to CIELCh 76, 5.601, 48.222 is called "border". The border property can be set on classes, ids or directly on the HTML element.

This example shows the color as border, it can be applied via the CSS property "border" or "border-color".

```
.border, #border, table{ border:4px solid rgb(198, 185, 180) }
```

If only the border color should be changed use the property `border-color`.

```
.border{ border-color:rgb(198, 185, 180) }
```

If you want to add a box shadow in that color use:

Here you see how a box with a 4 pixel `rgb(198, 185, 180)` colored shadow looks like.

```
.boxshadow{ -moz-box-shadow:4px 4px 4px  
4px rgb(198, 185, 180); -webkit-box-  
shadow:4px 4px 4px 4px rgb(198, 185, 180);  
box-shadow:4px 4px 4px 4px rgb(198, 185,  
180) }
```

Background

The CSS property to change the background color of an element to CIELCh 76, 5.601, 48.222 is called "background". The background property can be set on classes, ids or directly on the HTML element.

```
.background, #background, body{  
background: rgb(198, 185, 180) }
```

If only the background color should be changed can be used:

```
.background{ background-color: rgb(198,  
185, 180) }
```

This example shows the color as background, it is applied via the CSS property "background".

To optimize and compress your CSS code, you can use our [online CSS compressor and optimizer](#) based on csstidy. If you want to create a linear or radial gradient as background or border, check our [CSS Gradient Generator](#).

Hey! You found this booklet interesting? Support Converting Colors with the new Membership Option!

The pro membership hides all ads, plus gives you double the colors in the color bucket, and more awesome pro features!

[Learn more, Memberships starting at \\$2.50/m!](#)

**Follow me
on Twitter!**

@ConvertingColor