

Converting Colors

CIELCh(76, 6.003, 19.723)

Have a look what the booklet for
CIELCh(76, 6.003, 19.723) contains.

CIELCh(76, 6.031, 19.813)	3
<i>Conversions</i>	4
<i>Details</i>	6
<i>Harmonies</i>	11
<i>Previews</i>	20
<i>Color Blindness Simulation</i>	23
<i>CSS Examples</i>	26

Color

CIELCh(76, 6.031, 19.813)

Conversions

Conversions Part 1

Format	Color
Hex	C8B8B8
RGB	200, 184, 184
RGB Percent	78%, 72%, 72%
CMY	0.2166, 0.2793, 0.2793
CMYK	0.00, 0.08, 0.08, 0.22
HSL	0°, 13%, 75%
HSV	0°, 8%, 78%
XYZ	49.4809, 49.8872, 52.2456
YIQ	188.7840, 9.5360, 3.3920

Conversions

Conversions Part 2

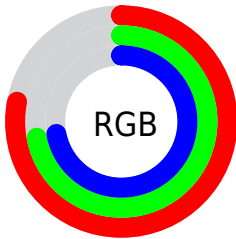
Format	Color
R _Y B	200, 184, 184
Decimal	13154488
CIE Lab	76.00, 5.67, 2.04
CIE LCh	76, 6.031, 19.813
Yxy	49.8872, 0.3264, 0.3290
Android (android.graphics.Color)	4291344568 (0xFFC8B8B8)
YUV	188.7840, -2.3585, 9.8364
Hunter-Lab	70.6309, 1.4452, 5.5849

Details

The CIELCh color $76, 6.031, 19.813$ is a light color, and the websafe version is hex `CCCCCC`. A complement of this color would be $79, 5.735, 199.083$, and the grayscale version is $76, 0.009, 296.813$.

A 20% lighter version of the original color is $96, 5.358, 19.646$, and $56, 6.040, 19.974$ is the 20% darker color. If you saturate the color by 10%, you get $70, 14.102, 20.657$, and if you desaturate by 10%, it is $82, 1.441, 199.703$.

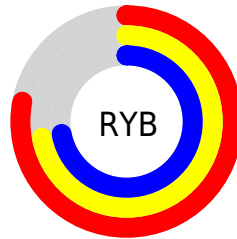
Distribution



Red (78%)

Green (72%)

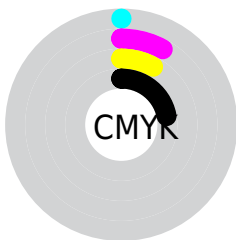
Blue (72%)



Red (78%)

Yellow (72%)

Blue (72%)

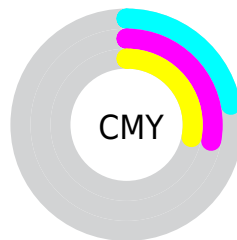


Cyan (0%)

Magenta (8%)

Yellow (8%)

Black (22%)



Cyan (22%)

Magenta (28%)

Yellow (28%)

Brightness & Saturation Gradients

These gradients show how the CIELCh color 76, 6.031, 19.813 changes by changing the brightness by 10 percent. The first figure shows a shift by +10% for each color and the second figure -10%.

Similar to the brightness gradients but the following saturation gradients show a change of the CIELCh color 76, 6.031, 19.813 by changing the saturation by 10% instead.

 76, 6.031, 19.813

 76, 6.031, 19.813

 100, 6.031, 19.813

 66, 6.031, 19.813

 96, 6.031, 19.813

 56, 6.031, 19.813

 46, 6.031, 19.813

 36, 6.031, 19.813

 26, 6.031, 19.813

 16, 6.031, 19.813

 6, 6.031, 19.813

 0, 6.031, 19.813

 76, 6.031, 19.813

 76, 6.031, 19.813

70, 14.102, 20.657

82, 1.441, 199.703

65, 22.792, 21.675

87, 8.350, 198.913

60, 32.064, 22.992

93, 14.752,
198.508

55, 41.813, 24.711

96, 18.170,
198.303

51, 51.841, 26.942

47, 61.851, 29.768

45, 71.430, 33.147

43, 79.864, 36.683

42, 85.870, 39.457

Harmonies

Complementary

The Complementary color scheme is a pair of colors which are on the opposite of each other on the color wheel.



76, 6.031, 19.813



79, 5.735, 199.083

Rectangle

The Rectangle color scheme consists of four colors that form a rectangle on the color wheel.



76, 6.031, 19.813



76, 6.031, 69.813



76, 6.031, 199.813



76, 6.031, 249.813

Sweetspot

The Sweet Spot groups the original color and five complimentary colors.



76, 6.030, 19.831



99, 1.794, 19.175



76, 10.453, 324.853



53, 1.020, 19.150



0, 0.000, 0.000



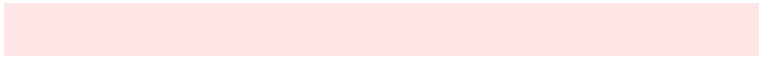
53, 0.007, 296.813

Same Dimension

The Same Dimension uses a secret algorithm to generate beautiful new colors.



76, 6.030, 19.831



93, 9.257, 20.000



78, 5.207, 74.382



39, 4.278, 19.939



34, 74.642, 39.779



3, 15.883, 19.416

Inverse Universe

The Inverse Universe completely reimagines the original color for something new.



79, 5.735, 199.083



98, 8.685, 198.951



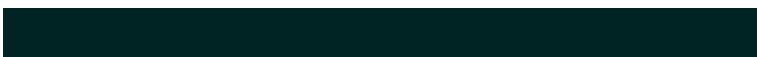
77, 5.117, 256.513



41, 4.033, 198.997



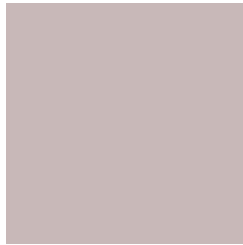
61, 35.878, 196.418



12, 12.981, 196.411

Previews

White Background



This preview shows how the CIELCh color 76, 6.031, 19.813 looks on a white background.

Color Contrast Check

Large Text (above 18pt) WCAG AA × Fail

Any Text WCAG AA × Fail

Large Text (above 18pt) WCAG AAA × Fail

Any Text WCAG AAA × Fail

Black Background



This preview shows how the CIELCh color 76, 6.031, 19.813 looks on a black background.

Color Contrast Check

Large Text (above 18pt) WCAG AA ✓ Pass

Any Text WCAG AA ✓ Pass

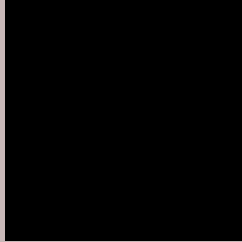
Large Text (above 18pt) WCAG AAA ✓ Pass

Any Text WCAG AAA ✓ Pass

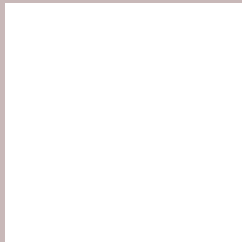
If you want to check with other color combinations, try the [Color Contrast Checker](#).

CIELCh 76, 6.031, 19.813

Background



This preview shows how black text looks on a background with the CIELCh color 76, 6.031, 19.813.



This preview shows how white text looks on a background with the CIELCh color 76, 6.031, 19.813.

Color Blindness Simulation

Color vision deficiency is a very complex topic, and I could not describe the different causes any better than Wikipedia does, so if you want to learn more, you should check out their [article about color blindness](#).

Dichromacy



Original Color

76, 6.031, 19.813

Protanopia

76, 1.825, 55.193

Deuteranopia

76, 9.986, 10.956



Tritanopia
76, 10.582, 334.928

Trichromacy



Original Color
76, 6.031, 19.813

Protanomaly
76, 3.035, 29.645

Deuteranomaly
76, 8.391, 12.721

Tritanomaly
76, 8.281, 344.346

Monochromacy



Original Color
76, 6.031, 19.813

Achromatopsia
77, 0.009, 296.813

Achromatomaly
76, 2.234, 19.351

CSS Examples

Text

The CSS property to change the color of the text to CIELCh 76, 6.031, 19.813 is called "color". The color property can be set on classes, ids or directly on the HTML element.

This example shows how text in the color `rgb(200, 184, 184)` looks like.

```
.text, #text, p{  
    color:rgb(200, 184, 184)  
}
```

If you want to add a text shadow in that color use the text-shadow property, you can generate a text shadow directly with our [CSS Text Shadow Generator](#).

Here you see how black text with a 4 pixel rgb(200, 184, 184) colored shadow looks like.

```
.shadow{ text-shadow: 4px 4px 2px rgb(200, 184, 184) }
```

Border

The CSS property to change the border of an element to CIELCh 76, 6.031, 19.813 is called "border". The border property can be set on classes, ids or directly on the HTML element.

This example shows the color as border, it can be applied via the CSS property "border" or "border-color".

```
.border, #border, table{ border:4px solid rgb(200, 184, 184) }
```

If only the border color should be changed use the property `border-color`.

```
.border{ border-color:rgb(200, 184, 184) }
```

If you want to add a box shadow in that color use:

Here you see how a box with a 4 pixel `rgb(200, 184, 184)` colored shadow looks like.

```
.boxshadow{ -moz-box-shadow:4px 4px 4px  
4px rgb(200, 184, 184); -webkit-box-  
shadow:4px 4px 4px 4px rgb(200, 184, 184);  
box-shadow:4px 4px 4px 4px rgb(200, 184,  
184) }
```

Background

The CSS property to change the background color of an element to CIELCh 76, 6.031, 19.813 is called "background". The background property can be set on classes, ids or directly on the HTML element.

```
.background, #background, body{  
background: rgb(200, 184, 184) }
```

If only the background color should be changed can be used:

```
.background{ background-color: rgb(200,  
184, 184) }
```

This example shows the color as background, it is applied via the CSS property "background".

To optimize and compress your CSS code, you can use our [online CSS compressor and optimizer](#) based on csstidy. If you want to create a linear or radial gradient as background or border, check our [CSS Gradient Generator](#).

Hey! You found this booklet interesting? Support Converting Colors with the new Membership Option!

The pro membership hides all ads, plus gives you double the colors in the color bucket, and more awesome pro features!

[Learn more, Memberships starting at \\$2.50/m!](#)

**Follow me
on Twitter!**

@ConvertingColor