

Converting Colors

CIELCh(76, 7.569, 56.694)

Have a look what the booklet for
CIELCh(76, 7.569, 56.694) contains.

CIELCh(76, 7.477, 54.698)	3
<i>Conversions</i>	4
<i>Details</i>	6
<i>Harmonies</i>	11
<i>Previews</i>	20
<i>Color Blindness Simulation</i>	23
<i>CSS Examples</i>	26

Color

CIELCh(76, 7.477, 54.698)

Conversions

Conversions Part 1

Format	Color
Hex	C8B8B0
RGB	200, 184, 176
RGB Percent	78%, 72%, 69%
CMY	0.2144, 0.2771, 0.3085
CMYK	0.00, 0.08, 0.12, 0.21
HSL	20°, 18%, 74%
HSV	20°, 12%, 79%
XYZ	48.9832, 49.8872, 48.2879
YIQ	187.8720, 12.1040, 0.9040

Conversions

Conversions Part 2

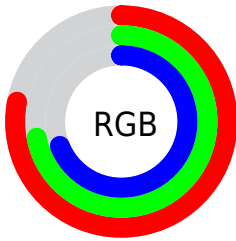
Format	Color
R _Y B	200, 188, 176
Decimal	13154480
CIE Lab	76.00, 4.32, 6.10
CIE LCh	76, 7.477, 54.698
Yxy	49.8872, 0.3329, 0.3390
Android (android.graphics.Color)	4291344560 (0xFFC8B8B0)
YUV	187.8720, -5.8529, 10.6363
Hunter-Lab	70.6309, 0.1874, 8.9071

Details

The CIELCh color $76, 7.477, 54.698$ is a light color, and the websafe version is hex `CCCCCC`. A complement of this color would be $77, 7.039, 236.876$, and the grayscale version is $76, 0.009, 296.813$.

A 20% lighter version of the original color is $96, 6.777, 56.644$, and $56, 7.344, 52.714$ is the 20% darker color. If you saturate the color by 10%, you get $72, 14.221, 54.012$, and if you desaturate by 10%, it is $80, 1.192, 55.151$.

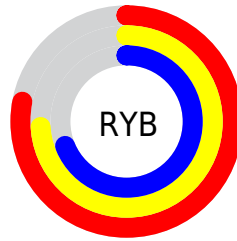
Distribution



Red (78%)

Green (72%)

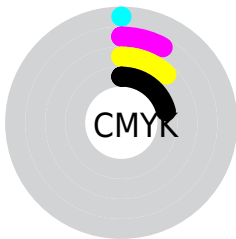
Blue (69%)



Red (78%)

Yellow (74%)

Blue (69%)

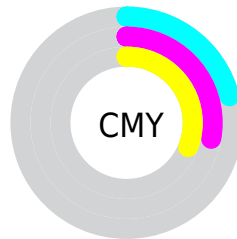


Cyan (0%)

Magenta (8%)

Yellow (12%)

Black (21%)



Cyan (21%)

Magenta (28%)

Yellow (31%)

Brightness & Saturation Gradients

These gradients show how the CIELCh color 76, 7.477, 54.698 changes by changing the brightness by 10 percent. The first figure shows a shift by +10% for each color and the second figure -10%.

Similar to the brightness gradients but the following saturation gradients show a change of the CIELCh color 76, 7.477, 54.698 by changing the saturation by 10% instead.

 76, 7.477, 54.698  76, 7.477, 54.698

 100, 7.477, 54.698  66, 7.477, 54.698

 96, 7.477, 54.698  56, 7.477, 54.698

 46, 7.477, 54.698

 36, 7.477, 54.698

 26, 7.477, 54.698

 16, 7.477, 54.698

 6, 7.477, 54.698

 0, 7.477, 54.698

 76, 7.477, 54.698  76, 7.477, 54.698

72, 14.221, 54.012

80, 1.192, 55.151

68, 21.468, 53.350

84, 4.680, 236.469

65, 29.248, 52.761

88, 10.187,
237.231

61, 37.562, 52.261

92, 14.961,
235.612

58, 46.354, 51.846

55, 55.447, 51.469

95, 16.768,
205.320

52, 64.415, 50.983

96, 18.000,
198.314

49, 72.357, 50.039

47, 77.571, 48.938

Harmonies

Complementary

The Complementary color scheme is a pair of colors which are on the opposite of each other on the color wheel.



76, 7.477, 54.698



77, 7.039, 236.876

Rectangle

The Rectangle color scheme consists of four colors that form a rectangle on the color wheel.



76, 7.477, 54.698



76, 7.477, 104.698



76, 7.477, 234.698



76, 7.477, 284.698

Sweetspot

The Sweet Spot groups the original color and five complimentary colors.



76, 7.477, 54.717



98, 2.949, 55.198



74, 12.445, 336.486



52, 2.102, 55.170



0, 0.000, 0.000



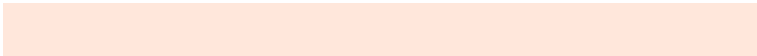
53, 0.007, 296.813

Same Dimension

The Same Dimension uses a secret algorithm to generate beautiful new colors.



76, 7.477, 54.717



93, 10.709, 54.560



79, 10.733, 101.003



40, 3.484, 54.897



39, 66.261, 49.472



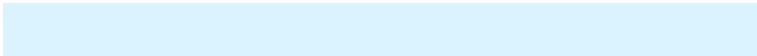
6, 13.395, 40.590

Inverse Universe

The Inverse Universe completely reimagines the original color for something new.



77, 7.039, 236.876



95, 9.958, 237.101



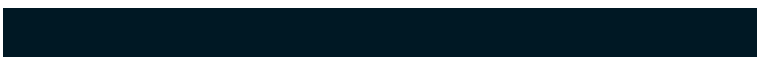
74, 10.911, 283.765



40, 3.328, 236.632



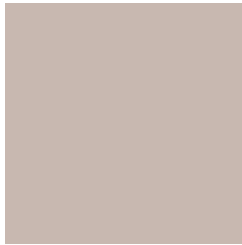
44, 36.911, 261.569



7, 11.669, 250.319

Previews

White Background



This preview shows how the CIELCh color 76, 7.477, 54.698 looks on a white background.

Color Contrast Check

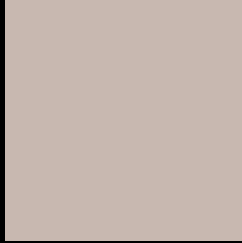
Large Text (above 18pt) WCAG AA × Fail

Any Text WCAG AA × Fail

Large Text (above 18pt) WCAG AAA × Fail

Any Text WCAG AAA × Fail

Black Background



This preview shows how the CIELCh color 76, 7.477, 54.698 looks on a black background.

Color Contrast Check

Large Text (above 18pt) WCAG AA ✓ Pass

Any Text WCAG AA ✓ Pass

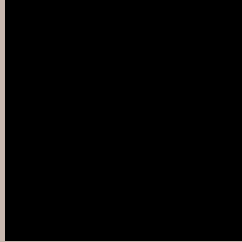
Large Text (above 18pt) WCAG AAA ✓ Pass

Any Text WCAG AAA ✓ Pass

If you want to check with other color combinations, try the [Color Contrast Checker](#).

CIELCh 76, 7.477, 54.698

Background



This preview shows how black text looks on a background with the CIELCh color 76, 7.477, 54.698.

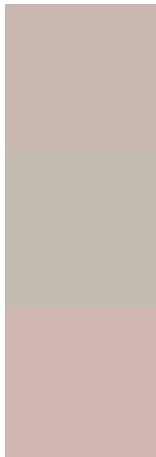


This preview shows how white text looks on a background with the CIELCh color 76, 7.477, 54.698.

Color Blindness Simulation

Color vision deficiency is a very complex topic, and I could not describe the different causes any better than Wikipedia does, so if you want to learn more, you should check out their [article about color blindness](#).

Dichromacy



Original Color


76, 7.477, 54.698

Protanopia

76, 5.319, 84.394

Deuteranopia

76, 10.999, 31.418



Tritanopia
76, 11.488, 335.754

Trichromacy



Original Color
76, 7.477, 54.698

Protanomaly
76, 6.134, 71.316

Deuteranomaly
76, 9.606, 36.221

Tritanomaly
76, 8.389, 353.460

Monochromacy



Original Color
76, 7.477, 54.698

Achromatopsia
76, 0.009, 296.813

Achromatomaly
76, 2.452, 60.279

CSS Examples

Text

The CSS property to change the color of the text to CIELCh 76, 7.477, 54.698 is called "color". The color property can be set on classes, ids or directly on the HTML element.

This example shows how text in the color `rgb(200, 184, 176)` looks like.

```
.text, #text, p{  
    color:rgb(200, 184, 176)  
}
```

If you want to add a text shadow in that color use the text-shadow property, you can generate a text shadow directly with our [CSS Text Shadow Generator](#).

Here you see how black text with a 4 pixel rgb(200, 184, 176) colored shadow looks like.

```
.shadow{ text-shadow: 4px 4px 2px rgb(200, 184, 176) }
```

Border

The CSS property to change the border of an element to CIELCh 76, 7.477, 54.698 is called "border". The border property can be set on classes, ids or directly on the HTML element.

This example shows the color as border, it can be applied via the CSS property "border" or "border-color".

```
.border, #border, table{ border:4px solid rgb(200, 184, 176) }
```

If only the border color should be changed use the property `border-color`.

```
.border{ border-color:rgb(200, 184, 176) }
```

If you want to add a box shadow in that color use:

Here you see how a box with a 4 pixel `rgb(200, 184, 176)` colored shadow looks like.

```
.boxshadow{ -moz-box-shadow:4px 4px 4px  
4px rgb(200, 184, 176); -webkit-box-  
shadow:4px 4px 4px 4px rgb(200, 184, 176);  
box-shadow:4px 4px 4px 4px rgb(200, 184,  
176) }
```

Background

The CSS property to change the background color of an element to CIELCh 76, 7.477, 54.698 is called "background". The background property can be set on classes, ids or directly on the HTML element.

```
.background, #background, body{  
background: rgb(200, 184, 176) }
```

If only the background color should be changed can be used:

```
.background{ background-color: rgb(200,  
184, 176) }
```

This example shows the color as background, it is applied via the CSS property "background".

To optimize and compress your CSS code, you can use our [online CSS compressor and optimizer](#) based on csstidy. If you want to create a linear or radial gradient as background or border, check our [CSS Gradient Generator](#).

Hey! You found this booklet interesting? Support Converting Colors with the new Membership Option!

The pro membership hides all ads, plus gives you double the colors in the color bucket, and more awesome pro features!

[Learn more, Memberships starting at \\$2.50/m!](#)

**Follow me
on Twitter!**

@ConvertingColor