

Converting Colors

CIELCh(76, 7.961, 18.267)

Have a look what the booklet for
CIELCh(76, 7.961, 18.267) contains.

CIELCh(76, 7.958, 19.996)	3
<i>Conversions</i>	4
<i>Details</i>	6
<i>Harmonies</i>	11
<i>Previews</i>	20
<i>Color Blindness Simulation</i>	23
<i>CSS Examples</i>	26

Color

CIELCh(76, 7.958, 19.996)

Conversions

Conversions Part 1

Format	Color
Hex	CCB7B7
RGB	204, 183, 183
RGB Percent	80%, 72%, 72%
CMY	0.2016, 0.2839, 0.2839
CMYK	0.00, 0.10, 0.10, 0.20
HSL	0°, 17%, 76%
HSV	0°, 10%, 80%
XYZ	50.1498, 49.8872, 51.5708
YIQ	189.2790, 12.5160, 4.4520

Conversions

Conversions Part 2

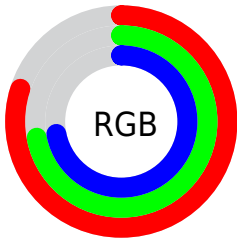
Format	Color
RYB	204, 183, 183
Decimal	13416375
CIELab	76.00, 7.48, 2.72
CIELCh	76, 7.958, 19.996
Yxy	49.8872, 0.3308, 0.3291
Android (android.graphics.Color)	4291606455 (0xFFCCB7B7)
YUV	189.2790, -3.0955, 12.9103
Hunter-Lab	70.6309, 3.1356, 6.1514

Details

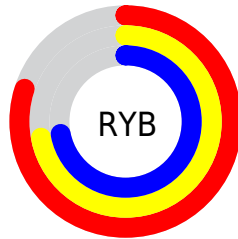
The CIELCh color $76, 7.958, 19.996$ is a light color, and the websafe version is hex `CCCCCC`. A complement of this color would be $80, 7.456, 198.936$, and the grayscale version is $77, 0.009, 296.813$.

A 20% lighter version of the original color is $96, 5.724, 19.680$, and $56, 8.110, 20.216$ is the 20% darker color. If you saturate the color by 10%, you get $70, 16.301, 20.868$, and if you desaturate by 10%, it is $82, 0.231, 17.024$.

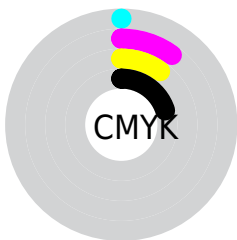
Distribution



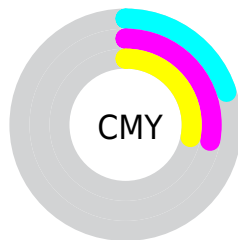
- Red (80%)
- Green (72%)
- Blue (72%)



- Red (80%)
- Yellow (72%)
- Blue (72%)



- Cyan (0%)
- Magenta (10%)
- Yellow (10%)
- Black (20%)



- Cyan (20%)
- Magenta (28%)
- Yellow (28%)

Brightness & Saturation Gradients

These gradients show how the CIELCh color 76, 7.958, 19.996 changes by changing the brightness by 10 percent. The first figure shows a shift by +10% for each color and the second figure -10%.

Similar to the brightness gradients but the following saturation gradients show a change of the CIELCh color 76, 7.958, 19.996 by changing the saturation by 10% instead.

 76, 7.958, 19.996  76, 7.958, 19.996

 100, 7.958, 19.996  66, 7.958, 19.996

 96, 7.958, 19.996  56, 7.958, 19.996

 46, 7.958, 19.996

 36, 7.958, 19.996

 26, 7.958, 19.996

 16, 7.958, 19.996

 6, 7.958, 19.996

 0, 7.958, 19.996

 76, 7.958, 19.996

 76, 7.958, 19.996

70, 16.301, 20.868

82, 0.231, 17.024

65, 25.269, 21.949

88, 6.912, 199.022

60, 34.812, 23.353

93, 13.526,
198.586

55, 44.801, 25.185

97, 16.996,
198.378

51, 55.011, 27.555

47, 65.117, 30.529

45, 74.652, 34.007

43, 82.744, 37.456

42, 88.257, 40.002

Harmonies

Complementary

The Complementary color scheme is a pair of colors which are on the opposite of each other on the color wheel.



76, 7.958, 19.996



80, 7.456, 198.936

Rectangle

The Rectangle color scheme consists of four colors that form a rectangle on the color wheel.



76, 7.958, 19.996



76, 7.958, 69.996



76, 7.958, 199.996



76, 7.958, 249.996

Sweetspot

The Sweet Spot groups the original color and five complimentary colors.



76, 7.956, 20.010



98, 2.702, 19.355



77, 13.686, 324.985



52, 2.054, 19.457



0, 0.000, 0.000



53, 0.007, 296.813

Same Dimension

The Same Dimension uses a secret algorithm to generate beautiful new colors.



76, 7.956, 20.010



92, 11.198, 20.157



79, 6.847, 74.115



40, 4.369, 19.938



34, 75.551, 39.825



4, 17.909, 19.413

Inverse Universe

The Inverse Universe completely reimagines the original color for something new.



80, 7.456, 198.936



98, 10.367, 198.829



78, 6.682, 256.820



42, 4.118, 198.991



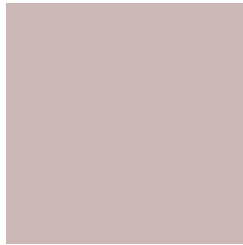
62, 36.293, 196.410



13, 13.511, 196.405

Previews

White Background



This preview shows how the CIELCh color 76, 7.958, 19.996 looks on a white background.

Color Contrast Check

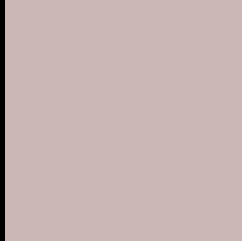
Large Text (above 18pt) WCAG AA × Fail

Any Text WCAG AA × Fail

Large Text (above 18pt) WCAG AAA × Fail

Any Text WCAG AAA × Fail

Black Background



This preview shows how the CIELCh color 76, 7.958, 19.996 looks on a black background.

Color Contrast Check

Large Text (above 18pt) WCAG AA ✓ Pass

Any Text WCAG AA ✓ Pass

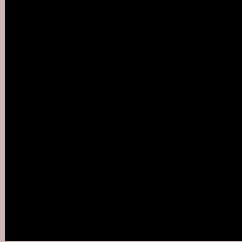
Large Text (above 18pt) WCAG AAA ✓ Pass

Any Text WCAG AAA ✓ Pass

If you want to check with other color combinations, try the [Color Contrast Checker](#).

CIELCh 76, 7.958, 19.996

Background



This preview shows how black text looks on a background with the CIELCh color 76, 7.958, 19.996.



This preview shows how white text looks on a background with the CIELCh color 76, 7.958, 19.996.

Color Blindness Simulation

Color vision deficiency is a very complex topic, and I could not describe the different causes any better than Wikipedia does, so if you want to learn more, you should check out their [article about color blindness](#).

Dichromacy



Original Color


76, 7.958, 19.996

Protanopia

76, 1.825, 55.193

Deuteranopia

76, 9.933, 14.012



Tritanopia
76, 11.680, 340.293

Trichromacy



Original Color
76, 7.958, 19.996

Protanomaly
76, 4.161, 27.011

Deuteranomaly
76, 9.125, 16.753

Tritanomaly
76, 9.295, 352.662

Monochromacy



Original Color
76, 7.958, 19.996

Achromatopsia
77, 0.009, 296.813

Achromatomaly
76, 2.608, 19.415

CSS Examples

Text

The CSS property to change the color of the text to CIELCh 76, 7.958, 19.996 is called "color". The color property can be set on classes, ids or directly on the HTML element.

This example shows how text in the color `rgb(204, 183, 183)` looks like.

```
.text, #text, p{  
    color:rgb(204, 183, 183)  
}
```

If you want to add a text shadow in that color use the text-shadow property, you can generate a text shadow directly with our [CSS Text Shadow Generator](#).

Here you see how black text with a 4 pixel rgb(204, 183, 183) colored shadow looks like.

```
.shadow{ text-shadow: 4px 4px 2px rgb(204, 183, 183) }
```

Border

The CSS property to change the border of an element to CIELCh 76, 7.958, 19.996 is called "border". The border property can be set on classes, ids or directly on the HTML element.

This example shows the color as border, it can be applied via the CSS property "border" or "border-color".

```
.border, #border, table{ border:4px solid rgb(204, 183, 183) }
```

If only the border color should be changed use the property `border-color`.

```
.border{ border-color:rgb(204, 183, 183) }
```

If you want to add a box shadow in that color use:

Here you see how a box with a 4 pixel `rgb(204, 183, 183)` colored shadow looks like.

```
.boxshadow{ -moz-box-shadow:4px 4px 4px  
4px rgb(204, 183, 183); -webkit-box-  
shadow:4px 4px 4px 4px rgb(204, 183, 183);  
box-shadow:4px 4px 4px 4px rgb(204, 183,  
183) }
```

Background

The CSS property to change the background color of an element to CIELCh 76, 7.958, 19.996 is called "background". The background property can be set on classes, ids or directly on the HTML element.

```
.background, #background, body{  
background: rgb(204, 183, 183) }
```

If only the background color should be changed can be used:

```
.background{ background-color: rgb(204,  
183, 183) }
```

This example shows the color as background, it is applied via the CSS property "background".

To optimize and compress your CSS code, you can use our [online CSS compressor and optimizer](#) based on csstidy. If you want to create a linear or radial gradient as background or border, check our [CSS Gradient Generator](#).

Hey! You found this booklet interesting? Support Converting Colors with the new Membership Option!

The pro membership hides all ads, plus gives you double the colors in the color bucket, and more awesome pro features!

[Learn more, Memberships starting at \\$2.50/m!](#)

**Follow me
on Twitter!**

@ConvertingColor