

Converting Colors

CIELCh(76, 7.980, 50.686)

Have a look what the booklet for
CIELCh(76, 7.980, 50.686) contains.

CIELCh(76, 8.129, 51.585)	3
<i>Conversions</i>	4
<i>Details</i>	6
<i>Harmonies</i>	11
<i>Previews</i>	20
<i>Color Blindness Simulation</i>	23
<i>CSS Examples</i>	26

Color

CIELCh(76, 8.129, 51.585)

Conversions

Conversions Part 1

Format	Color
Hex	CAB8B0
RGB	202, 184, 176
RGB Percent	79%, 72%, 69%
CMY	0.2084, 0.2790, 0.3104
CMYK	0.00, 0.09, 0.13, 0.21
HSL	18°, 20%, 74%
HSV	18°, 13%, 79%
XYZ	49.2514, 49.8872, 48.0345
YIQ	188.4700, 13.2960, 1.3280

Conversions

Conversions Part 2

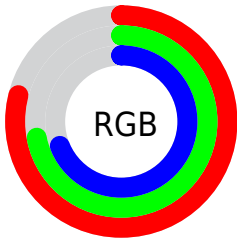
Format	Color
RYB	202, 188, 176
Decimal	13285552
CIELab	76.00, 5.05, 6.37
CIELCh	76, 8.129, 51.585
Yxy	49.8872, 0.3346, 0.3390
Android (android.graphics.Color)	4291475632 (0xFFCAB8B0)
YUV	188.4700, -6.1477, 11.8658
Hunter-Lab	70.6309, 0.8651, 9.1198

Details

The CIELCh color $76, 8.129, 51.585$ is a light color, and the websafe version is hex `CCCCCC`. A complement of this color would be $77, 7.583, 233.646$, and the grayscale version is $76, 0.009, 296.813$.

A 20% lighter version of the original color is $96, 6.777, 56.644$, and $56, 8.062, 49.535$ is the 20% darker color. If you saturate the color by 10%, you get $72, 14.996, 51.019$, and if you desaturate by 10%, it is $80, 1.749, 52.044$.

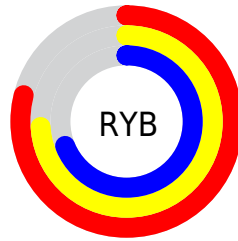
Distribution



Red (79%)

Green (72%)

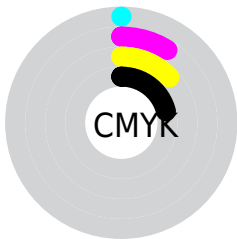
Blue (69%)



Red (79%)

Yellow (74%)

Blue (69%)

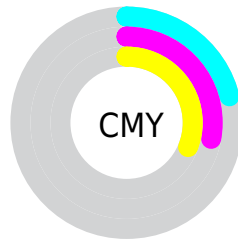


Cyan (0%)

Magenta (9%)

Yellow (13%)

Black (21%)



Cyan (21%)

Magenta (28%)

Yellow (31%)

Brightness & Saturation Gradients

These gradients show how the CIELCh color 76, 8.129, 51.585 changes by changing the brightness by 10 percent. The first figure shows a shift by +10% for each color and the second figure -10%.

Similar to the brightness gradients but the following saturation gradients show a change of the CIELCh color 76, 8.129, 51.585 by changing the saturation by 10% instead.

 76, 8.129, 51.585

 76, 8.129, 51.585

 100, 8.129, 51.585

 66, 8.129, 51.585

 96, 8.129, 51.585

 56, 8.129, 51.585

 46, 8.129, 51.585

 36, 8.129, 51.585

 26, 8.129, 51.585

 16, 8.129, 51.585

 6, 8.129, 51.585

 0, 8.129, 51.585

 76, 8.129, 51.585

 76, 8.129, 51.585

72, 14.996, 51.019

80, 1.749, 52.044

68, 22.395, 50.496

84, 4.193, 233.159

64, 30.355, 50.065

88, 9.746, 233.820

61, 38.875, 49.746

93, 14.549,
231.695

57, 47.891, 49.534

96, 17.103,
200.581

54, 57.211, 49.382

51, 66.374, 49.128

97, 17.533,
198.344

49, 74.401, 48.388

47, 79.129, 47.605

Harmonies

Complementary

The Complementary color scheme is a pair of colors which are on the opposite of each other on the color wheel.



76, 8.129, 51.585



77, 7.583, 233.646

Rectangle

The Rectangle color scheme consists of four colors that form a rectangle on the color wheel.



76, 8.129, 51.585



76, 8.129, 101.585



76, 8.129, 231.585



76, 8.129, 281.585

Sweetspot

The Sweet Spot groups the original color and five complimentary colors.



76, 8.129, 51.602



98, 2.952, 52.048



74, 13.786, 335.146



52, 2.104, 52.028



0, 0.000, 0.000



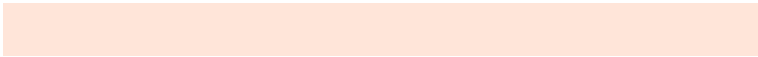
53, 0.007, 296.813

Same Dimension

The Same Dimension uses a secret algorithm to generate beautiful new colors.



76, 8.129, 51.602



93, 11.546, 51.464



79, 11.214, 98.929



41, 3.565, 51.805



39, 67.994, 48.086



6, 15.212, 37.912

Inverse Universe

The Inverse Universe completely reimagines the original color for something new.



77, 7.583, 233.646



94, 10.622, 233.862



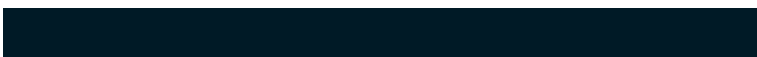
74, 11.378, 281.992



41, 3.393, 233.353



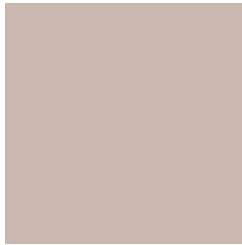
46, 35.776, 257.111



8, 12.151, 245.517

Previews

White Background



This preview shows how the CIELCh color 76, 8.129, 51.585 looks on a white background.

Color Contrast Check

Large Text (above 18pt) WCAG AA × Fail

Any Text WCAG AA × Fail

Large Text (above 18pt) WCAG AAA × Fail

Any Text WCAG AAA × Fail

Black Background



This preview shows how the CIELCh color 76, 8.129, 51.585 looks on a black background.

Color Contrast Check

Large Text (above 18pt) WCAG AA ✓ Pass

Any Text WCAG AA ✓ Pass

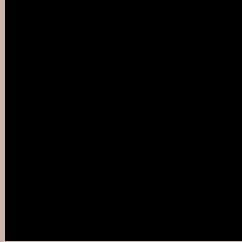
Large Text (above 18pt) WCAG AAA ✓ Pass

Any Text WCAG AAA ✓ Pass

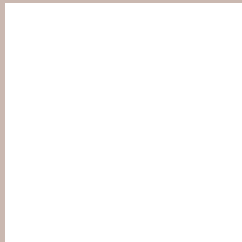
If you want to check with other color combinations, try the [Color Contrast Checker](#).

CIELCh 76, 8.129, 51.585

Background



This preview shows how black text looks on a background with the CIELCh color 76, 8.129, 51.585.



This preview shows how white text looks on a background with the CIELCh color 76, 8.129, 51.585.

Color Blindness Simulation

Color vision deficiency is a very complex topic, and I could not describe the different causes any better than Wikipedia does, so if you want to learn more, you should check out their [article about color blindness](#).

Dichromacy



Original Color

76, 8.129, 51.585

Protanopia

76, 5.811, 86.569

Deuteranopia

76, 11.524, 33.636



Tritanopia
76, 11.399, 339.044

Trichromacy



Original Color
76, 8.129, 51.585

Protanomaly
76, 6.134, 71.316

Deuteranomaly
76, 10.162, 38.481

Tritanomaly
76, 8.521, 357.890

Monochromacy



Original Color
76, 8.129, 51.585

Achromatopsia
76, 0.009, 296.813

Achromatomaly
76, 2.822, 41.757

CSS Examples

Text

The CSS property to change the color of the text to CIELCh 76, 8.129, 51.585 is called "color". The color property can be set on classes, ids or directly on the HTML element.

This example shows how text in the color `rgb(202, 184, 176)` looks like.

```
.text, #text, p{  
    color:rgb(202, 184, 176)  
}
```

If you want to add a text shadow in that color use the text-shadow property, you can generate a text shadow directly with our [CSS Text Shadow Generator](#).

Here you see how black text with a 4 pixel rgb(202, 184, 176) colored shadow looks like.

```
.shadow{ text-shadow: 4px 4px 2px rgb(202, 184, 176) }
```

Border

The CSS property to change the border of an element to CIELCh 76, 8.129, 51.585 is called "border". The border property can be set on classes, ids or directly on the HTML element.

This example shows the color as border, it can be applied via the CSS property "border" or "border-color".

```
.border, #border, table{ border:4px solid rgb(202, 184, 176) }
```

If only the border color should be changed use the property border-color.

```
.border{ border-color:rgb(202, 184, 176) }
```

If you want to add a box shadow in that color use:

Here you see how a box with a 4 pixel rgb(202, 184, 176) colored shadow looks like.

```
.boxshadow{ -moz-box-shadow:4px 4px 4px  
4px rgb(202, 184, 176); -webkit-box-  
shadow:4px 4px 4px 4px rgb(202, 184, 176);  
box-shadow:4px 4px 4px 4px rgb(202, 184,  
176) }
```

Background

The CSS property to change the background color of an element to CIELCh 76, 8.129, 51.585 is called "background". The background property can be set on classes, ids or directly on the HTML element.

```
.background, #background, body{  
background: rgb(202, 184, 176) }
```

If only the background color should be changed can be used:

```
.background{ background-color: rgb(202,  
184, 176) }
```

This example shows the color as background, it is applied via the CSS property "background".

To optimize and compress your CSS code, you can use our [online CSS compressor and optimizer](#) based on csstidy. If you want to create a linear or radial gradient as background or border, check our [CSS Gradient Generator](#).

Hey! You found this booklet interesting? Support Converting Colors with the new Membership Option!

The pro membership hides all ads, plus gives you double the colors in the color bucket, and more awesome pro features!

[Learn more, Memberships starting at \\$2.50/m!](#)

**Follow me
on Twitter!**

@ConvertingColor