

Converting Colors

CIELCh(76, 8.082, 6.590)

Have a look what the booklet for
CIELCh(76, 8.082, 6.590) contains.

CIELCh(76, 8.198, 4.884)	3
<i>Conversions</i>	4
<i>Details</i>	6
<i>Harmonies</i>	11
<i>Previews</i>	20
<i>Color Blindness Simulation</i>	23
<i>CSS Examples</i>	26

Color

CIELCh(76, 8.198, 4.884)

Conversions

Conversions Part 1

Format	Color
Hex	CBB6BA
RGB	203, 182, 186
RGB Percent	80%, 71%, 73%
CMY	0.2026, 0.2850, 0.2693
CMYK	0.00, 0.10, 0.08, 0.20
HSL	349°, 17%, 76%
HSV	349°, 10%, 80%
XYZ	50.4072, 49.8872, 53.6048
YIQ	188.7350, 11.2320, 5.6960

Conversions

Conversions Part 2

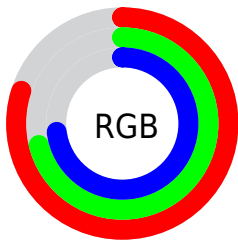
Format	Color
RYB	203, 182, 186
Decimal	13350586
CIELab	76.00, 8.17, 0.70
CIELCh	76, 8.198, 4.884
Yxy	49.8872, 0.3275, 0.3242
Android (android.graphics.Color)	4291540666 (0xFFCBB6BA)
YUV	188.7350, -1.3484, 12.5104
Hunter-Lab	70.6309, 3.7860, 4.4439

Details

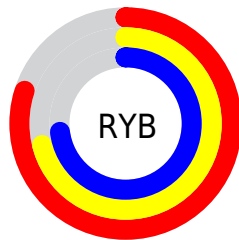
The CIELCh color **76, 8.198, 4.884** is a light color, and the websafe version is hex **CCCCCC**. A complement of this color would be **80, 7.860, 183.147**, and the grayscale version is **77, 0.009, 296.813**.

A 20% lighter version of the original color is **96, 6.408, 1.133**, and **56, 8.354, 4.462** is the 20% darker color. If you saturate the color by 10%, you get **71, 16.556, 6.027**, and if you desaturate by 10%, it is **82, 0.258, 2.011**.

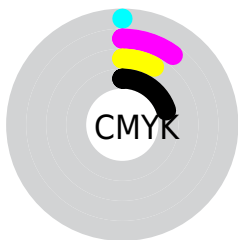
Distribution



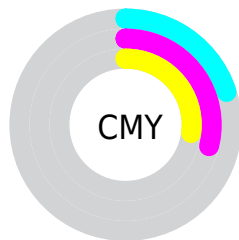
- Red (80%)
- Green (71%)
- Blue (73%)



- Red (80%)
- Yellow (71%)
- Blue (73%)



- Cyan (0%)
- Magenta (10%)
- Yellow (8%)
- Black (20%)



- Cyan (20%)
- Magenta (29%)
- Yellow (27%)

Brightness & Saturation Gradients

These gradients show how the CIELCh color 76, 8.198, 4.884 changes by changing the brightness by 10 percent. The first figure shows a shift by +10% for each color and the second figure -10%.

Similar to the brightness gradients but the following saturation gradients show a change of the CIELCh color 76, 8.198, 4.884 by changing the saturation by 10% instead.

 76, 8.198, 4.884

 76, 8.198, 4.884

 100, 8.198, 4.884

 66, 8.198, 4.884

 96, 8.198, 4.884

 56, 8.198, 4.884

 46, 8.198, 4.884

 36, 8.198, 4.884

 26, 8.198, 4.884

 16, 8.198, 4.884

 6, 8.198, 4.884

 0, 8.198, 4.884

 76, 8.198, 4.884

 76, 8.198, 4.884

71, 16.556, 6.027

82, 0.258, 2.011

65, 25.285, 7.359

87, 7.247, 183.289

60, 34.262, 8.979

93, 14.332,
182.549

55, 43.284, 10.991

97, 17.270,
193.516

51, 52.059, 13.527

48, 60.239, 16.738

97, 17.080,
198.373

45, 67.525, 20.752

44, 73.791, 25.570

43, 79.127, 30.552

Harmonies

Complementary

The Complementary color scheme is a pair of colors which are on the opposite of each other on the color wheel.



76, 8.198, 4.884



80, 7.860, 183.147

Rectangle

The Rectangle color scheme consists of four colors that form a rectangle on the color wheel.



76, 8.198, 4.884



76, 8.198, 54.884



76, 8.198, 184.884



76, 8.198, 234.884

Sweetspot

The Sweet Spot groups the original color and five complimentary colors.



76, 8.196, 4.894



98, 2.807, 4.043



76, 12.909, 319.249



52, 2.132, 4.163



0, 0.000, 0.000



53, 0.007, 296.813

Same Dimension

The Same Dimension uses a secret algorithm to generate beautiful new colors.



76, 8.196, 4.894



92, 11.499, 5.092



77, 6.504, 50.813



40, 4.502, 4.794



34, 67.455, 29.690



4, 18.188, 10.117

Inverse Universe

The Inverse Universe completely reimagines the original color for something new.



76, 8.196, 4.894



92, 11.499, 5.092



79, 6.152, 232.421



40, 4.502, 4.794



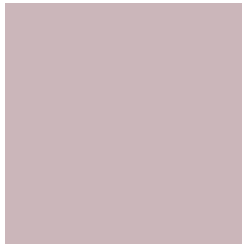
34, 67.455, 29.690



4, 18.188, 10.117

Previews

White Background



This preview shows how the CIELCh color 76, 8.198, 4.884 looks on a white background.

Color Contrast Check

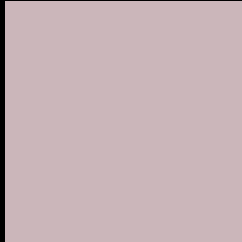
Large Text (above 18pt) WCAG AA × Fail

Any Text WCAG AA × Fail

Large Text (above 18pt) WCAG AAA × Fail

Any Text WCAG AAA × Fail

Black Background



This preview shows how the CIE LCh color 76, 8.198, 4.884 looks on a black background.

Color Contrast Check

Large Text (above 18pt) WCAG AA ✓ Pass

Any Text WCAG AA ✓ Pass

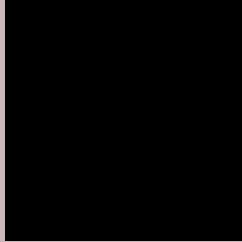
Large Text (above 18pt) WCAG AAA ✓ Pass

Any Text WCAG AAA ✓ Pass

If you want to check with other color combinations, try the [Color Contrast Checker](#).

CIELCh 76, 8.198, 4.884

Background



This preview shows how black text looks on a background with the CIELCh color 76, 8.198, 4.884.



This preview shows how white text looks on a background with the CIELCh color 76, 8.198, 4.884.

Color Blindness Simulation

Color vision deficiency is a very complex topic, and I could not describe the different causes any better than Wikipedia does, so if you want to learn more, you should check out their [article about color blindness](#).

Dichromacy



Original Color


76, 8.198, 4.884

Protanopia

76, 1.561, 335.560

Deuteranopia

76, 9.810, 4.356



Tritanopia
76, 11.680, 340.293

Trichromacy



Original Color

76, 8.198, 4.884

Protanomaly

76, 4.073, 356.317

Deuteranomaly

76, 9.443, 3.681

Tritanomaly

76, 10.431, 345.766

Monochromacy



Original Color

76, 8.198, 4.884

Achromatopsia

77, 0.009, 296.813

Achromatomaly

76, 2.665, 7.817

CSS Examples

Text

The CSS property to change the color of the text to CIELCh 76, 8.198, 4.884 is called "color". The color property can be set on classes, ids or directly on the HTML element.

This example shows how text in the color `rgb(203, 182, 186)` looks like.

```
.text, #text, p{  
    color:rgb(203, 182, 186)  
}
```

If you want to add a text shadow in that color use the text-shadow property, you can generate a text shadow directly with our [CSS Text Shadow Generator](#).

Here you see how black text with a 4 pixel rgb(203, 182, 186) colored shadow looks like.

```
.shadow{ text-shadow: 4px 4px 2px rgb(203, 182, 186) }
```

Border

The CSS property to change the border of an element to CIELCh 76, 8.198, 4.884 is called "border". The border property can be set on classes, ids or directly on the HTML element.

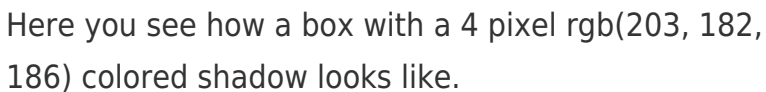
This example shows the color as border, it can be applied via the CSS property "border" or "border-color".

```
.border, #border, table{ border:4px solid rgb(203, 182, 186) }
```

If only the border color should be changed use the property `border-color`.

```
.border{ border-color:rgb(203, 182, 186) }
```

If you want to add a box shadow in that color use:



Here you see how a box with a 4 pixel `rgb(203, 182, 186)` colored shadow looks like.

```
.boxshadow{ -moz-box-shadow:4px 4px 4px  
4px rgb(203, 182, 186); -webkit-box-  
shadow:4px 4px 4px 4px rgb(203, 182, 186);  
box-shadow:4px 4px 4px 4px rgb(203, 182,  
186) }
```

Background

The CSS property to change the background color of an element to CIELCh 76, 8.198, 4.884 is called "background". The background property can be set on classes, ids or directly on the HTML element.

```
.background, #background, body{  
background: rgb(203, 182, 186) }
```

If only the background color should be changed can be used:

```
.background{ background-color: rgb(203,  
182, 186) }
```

This example shows the color as background, it is applied via the CSS property "background".

To optimize and compress your CSS code, you can use our [online CSS compressor and optimizer](#) based on csstidy. If you want to create a linear or radial gradient as background or border, check our [CSS Gradient Generator](#).

Hey! You found this booklet interesting? Support Converting Colors with the new Membership Option!

The pro membership hides all ads, plus gives you double the colors in the color bucket, and more awesome pro features!

[Learn more, Memberships starting at \\$2.50/m!](#)

**Follow me
on Twitter!**

@ConvertingColor