

Converting Colors

CIELCh(76, 8.343, 20.017)

Have a look what the booklet for
CIELCh(76, 8.343, 20.017) contains.

CIELCh(76, 8.353, 20.035)	3
<i>Conversions</i>	4
<i>Details</i>	6
<i>Harmonies</i>	11
<i>Previews</i>	20
<i>Color Blindness Simulation</i>	23
<i>CSS Examples</i>	26

Color

CIELCh(76, 8.353, 20.035)

Conversions

Conversions Part 1

Format	Color
Hex	CCB6B6
RGB	204, 182, 182
RGB Percent	80%, 71%, 71%
CMY	0.1985, 0.2848, 0.2848
CMYK	0.00, 0.11, 0.11, 0.20
HSL	0°, 18%, 76%
HSV	0°, 11%, 80%
XYZ	50.2874, 49.8872, 51.4315
YIQ	188.5780, 13.1120, 4.6640

Conversions

Conversions Part 2

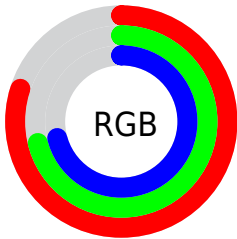
Format	Color
R _Y B	204, 182, 182
Decimal	13416118
CIE Lab	76.00, 7.85, 2.86
CIE LCh	76, 8.353, 20.035
Yxy	49.8872, 0.3317, 0.3291
Android (android.graphics.Color)	4291606198 (0xFFCCB6B6)
YUV	188.5780, -3.2430, 13.5251
Hunter-Lab	70.6309, 3.4834, 6.2682

Details

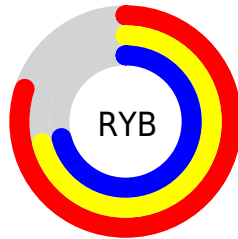
The CIELCh color $76, 8.353, 20.035$ is a light color, and the websafe version is hex `CCCCCC`. A complement of this color would be $81, 7.803, 198.910$, and the grayscale version is $77, 0.009, 296.813$.

A 20% lighter version of the original color is $95, 6.091, 19.713$, and $56, 8.537, 20.270$ is the 20% darker color. If you saturate the color by 10%, you get $70, 16.750, 20.914$, and if you desaturate by 10%, it is $82, 0.575, 18.493$.

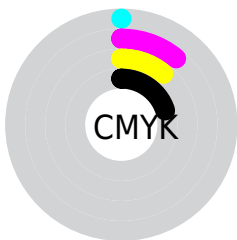
Distribution



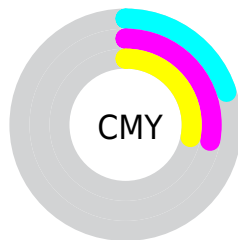
- Red (80%)
- Green (71%)
- Blue (71%)



- Red (80%)
- Yellow (71%)
- Blue (71%)



- Cyan (0%)
- Magenta (11%)
- Yellow (11%)
- Black (20%)



- Cyan (20%)
- Magenta (28%)
- Yellow (28%)

Brightness & Saturation Gradients

These gradients show how the CIELCh color 76, 8.353, 20.035 changes by changing the brightness by 10 percent. The first figure shows a shift by +10% for each color and the second figure -10%.

Similar to the brightness gradients but the following saturation gradients show a change of the CIELCh color 76, 8.353, 20.035 by changing the saturation by 10% instead.

 76, 8.353, 20.035  76, 8.353, 20.035

 100, 8.353, 20.035  66, 8.353, 20.035

 96, 8.353, 20.035  56, 8.353, 20.035

 46, 8.353, 20.035


 36, 8.353, 20.035

 26, 8.353, 20.035

 16, 8.353, 20.035

 6, 8.353, 20.035

 0, 8.353, 20.035

 76, 8.353, 20.035  76, 8.353, 20.035

70, 16.750, 20.914

82, 0.575, 18.493

65, 25.775, 22.008

88, 6.617, 199.048

60, 35.372, 23.430

93, 13.274,
198.605

55, 45.408, 25.285

97, 16.757,
198.393

51, 55.653, 27.683

48, 65.775, 30.687

45, 75.296, 34.180

43, 83.305, 37.603

43, 88.508, 40.002

Harmonies

Complementary

The Complementary color scheme is a pair of colors which are on the opposite of each other on the color wheel.



76, 8.353, 20.035



81, 7.803, 198.910

Rectangle

The Rectangle color scheme consists of four colors that form a rectangle on the color wheel.



76, 8.353, 20.035



76, 8.353, 70.035



76, 8.353, 200.035



76, 8.353, 250.035

Sweetspot

The Sweet Spot groups the original color and five complimentary colors.



76, 8.351, 20.048



98, 2.702, 19.357



77, 14.343, 325.012



52, 2.054, 19.459



0, 0.000, 0.000



53, 0.007, 296.813

Same Dimension

The Same Dimension uses a secret algorithm to generate beautiful new colors.



76, 8.351, 20.048



91, 12.180, 20.241



79, 7.182, 74.060



40, 4.369, 19.939



34, 75.551, 39.825



4, 17.908, 19.414

Inverse Universe

The Inverse Universe completely reimagines the original color for something new.



81, 7.803, 198.910



98, 11.200, 198.774



78, 6.999, 256.884



42, 4.118, 198.992



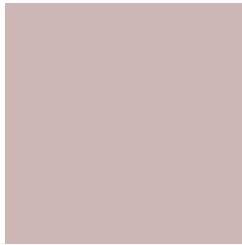
62, 36.292, 196.414



13, 13.511, 196.408

Previews

White Background



This preview shows how the CIELCh color 76, 8.353, 20.035 looks on a white background.

Color Contrast Check

Large Text (above 18pt) WCAG AA × Fail

Any Text WCAG AA × Fail

Large Text (above 18pt) WCAG AAA × Fail

Any Text WCAG AAA × Fail

Black Background



This preview shows how the CIELCh color 76, 8.353, 20.035 looks on a black background.

Color Contrast Check

Large Text (above 18pt) WCAG AA ✓ Pass

Any Text WCAG AA ✓ Pass

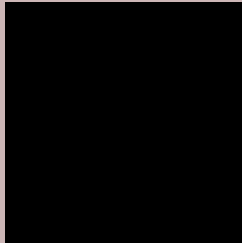
Large Text (above 18pt) WCAG AAA ✓ Pass

Any Text WCAG AAA ✓ Pass

If you want to check with other color combinations, try the [Color Contrast Checker](#).

CIELCh 76, 8.353, 20.035

Background



This preview shows how black text looks on a background with the CIELCh color 76, 8.353, 20.035.



This preview shows how white text looks on a background with the CIELCh color 76, 8.353, 20.035.

Color Blindness Simulation

Color vision deficiency is a very complex topic, and I could not describe the different causes any better than Wikipedia does, so if you want to learn more, you should check out their [article about color blindness](#).

Dichromacy



Original Color


76, 8.353, 20.035

Protanopia

76, 1.825, 55.193

Deuteranopia

76, 9.933, 14.012



Tritanopia
76, 12.596, 340.685

Trichromacy



Original Color
76, 8.353, 20.035

Protanomaly
76, 4.161, 27.011

Deuteranomaly
76, 9.549, 13.725

Tritanomaly
76, 10.212, 352.026

Monochromacy



Original Color
76, 8.353, 20.035

Achromatopsia
77, 0.009, 296.813

Achromatomaly
77, 2.984, 19.470

CSS Examples

Text

The CSS property to change the color of the text to CIELCh 76, 8.353, 20.035 is called "color". The color property can be set on classes, ids or directly on the HTML element.

This example shows how text in the color `rgb(204, 182, 182)` looks like.

```
.text, #text, p{  
    color:rgb(204, 182, 182)  
}
```

If you want to add a text shadow in that color use the text-shadow property, you can generate a text shadow directly with our [CSS Text Shadow Generator](#).

Here you see how black text with a 4 pixel rgb(204, 182, 182) colored shadow looks like.

```
.shadow{ text-shadow: 4px 4px 2px rgb(204, 182, 182) }
```

Border

The CSS property to change the border of an element to CIELCh 76, 8.353, 20.035 is called "border". The border property can be set on classes, ids or directly on the HTML element.

This example shows the color as border, it can be applied via the CSS property "border" or "border-color".

```
.border, #border, table{ border:4px solid rgb(204, 182, 182) }
```

If only the border color should be changed use the property `border-color`.

```
.border{ border-color:rgb(204, 182, 182) }
```

If you want to add a box shadow in that color use:

Here you see how a box with a 4 pixel `rgb(204, 182, 182)` colored shadow looks like.

```
.boxshadow{ -moz-box-shadow:4px 4px 4px  
4px rgb(204, 182, 182); -webkit-box-  
shadow:4px 4px 4px 4px rgb(204, 182, 182);  
box-shadow:4px 4px 4px 4px rgb(204, 182,  
182) }
```

Background

The CSS property to change the background color of an element to CIELCh 76, 8.353, 20.035 is called "background". The background property can be set on classes, ids or directly on the HTML element.

```
.background, #background, body{  
background: rgb(204, 182, 182) }
```

If only the background color should be changed can be used:

```
.background{ background-color: rgb(204,  
182, 182) }
```

This example shows the color as background, it is applied via the CSS property "background".

To optimize and compress your CSS code, you can use our [online CSS compressor and optimizer](#) based on csstidy. If you want to create a linear or radial gradient as background or border, check our [CSS Gradient Generator](#).

Hey! You found this booklet interesting? Support Converting Colors with the new Membership Option!

The pro membership hides all ads, plus gives you double the colors in the color bucket, and more awesome pro features!

[Learn more, Memberships starting at \\$2.50/m!](#)

**Follow me
on Twitter!**

@ConvertingColor