

Converting Colors

CIELCh(76, 8.430, 29.939)

Have a look what the booklet for
CIELCh(76, 8.430, 29.939) contains.

CIELCh(76, 8.165, 31.307)	3
<i>Conversions</i>	4
<i>Details</i>	6
<i>Harmonies</i>	11
<i>Previews</i>	20
<i>Color Blindness Simulation</i>	23
<i>CSS Examples</i>	26

Color

CIELCh(76, 8.165, 31.307)

Conversions

Conversions Part 1

Format	Color
Hex	CCB7B4
RGB	204, 183, 180
RGB Percent	80%, 72%, 71%
CMY	0.2007, 0.2831, 0.2948
CMYK	0.00, 0.10, 0.12, 0.20
HSL	8°, 19%, 75%
HSV	8°, 12%, 80%
XYZ	49.9631, 49.8872, 50.0756
YIQ	188.9370, 13.4790, 3.5190

Conversions

Conversions Part 2

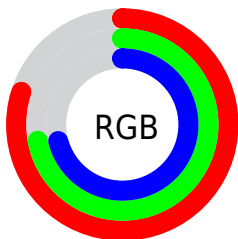
Format	Color
RYB	204, 183, 180
Decimal	13416372
CIELab	76.00, 6.98, 4.24
CIELCh	76, 8.165, 31.307
Yxy	49.8872, 0.3333, 0.3327
Android (android.graphics.Color)	4291606452 (0xFFCCB7B4)
YUV	188.9370, -4.4059, 13.2103
Hunter-Lab	70.6309, 2.6637, 7.4065

Details

The CIELCh color `76, 8.165, 31.307` is a light color, and the websafe version is hex `CCCCCC`. A complement of this color would be `79, 7.561, 211.204`, and the grayscale version is `77, 0.009, 296.813`.

A 20% lighter version of the original color is `96, 5.943, 34.603`, and `56, 8.359, 31.942` is the 20% darker color. If you saturate the color by 10%, you get `71, 15.739, 31.668`, and if you desaturate by 10%, it is `81, 1.180, 30.738`.

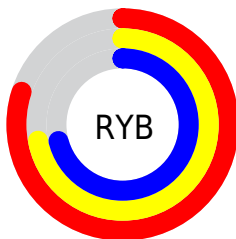
Distribution



Red (80%)

Green (72%)

Blue (71%)



Red (80%)

Yellow (72%)

Blue (71%)

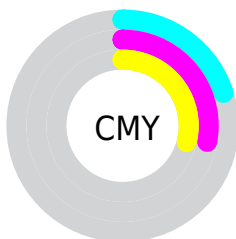


Cyan (0%)

Magenta (10%)

Yellow (12%)

Black (20%)



Cyan (20%)

Magenta (28%)

Yellow (29%)


Brightness & Saturation Gradients

These gradients show how the CIELCh color 76, 8.165, 31.307 changes by changing the brightness by 10 percent. The first figure shows a shift by +10% for each color and the second figure -10%.

Similar to the brightness gradients but the following saturation gradients show a change of the CIELCh color 76, 8.165, 31.307 by changing the saturation by 10% instead.

 76, 8.165, 31.307  76, 8.165, 31.307

 100, 8.165, 31.307  66, 8.165, 31.307

 96, 8.165, 31.307  56, 8.165, 31.307

 46, 8.165, 31.307

 36, 8.165, 31.307

 26, 8.165, 31.307

 16, 8.165, 31.307

 6, 8.165, 31.307

 0, 8.165, 31.307

 76, 8.165, 31.307  76, 8.165, 31.307

71, 15.739, 31.668

81, 1.180, 30.738

66, 23.941, 32.173

86, 5.263, 211.250

62, 32.776, 32.905

91, 11.219,
211.197

57, 42.203, 33.922

96, 16.638,
199.933

53, 52.105, 35.277

50, 62.250, 36.974

97, 16.931,
198.382

47, 72.166, 38.881

45, 80.829, 40.537

44, 86.241, 41.516

Harmonies

Complementary

The Complementary color scheme is a pair of colors which are on the opposite of each other on the color wheel.



76, 8.165, 31.307



79, 7.561, 211.204

Rectangle

The Rectangle color scheme consists of four colors that form a rectangle on the color wheel.



76, 8.165, 31.307



76, 8.165, 81.307



76, 8.165, 211.307



76, 8.165, 261.307

Sweetspot

The Sweet Spot groups the original color and five complimentary colors.



76, 8.164, 31.322



98, 3.222, 31.039



76, 14.450, 328.449



52, 2.297, 31.083



0, 0.000, 0.000



53, 0.007, 296.813

Same Dimension

The Same Dimension uses a secret algorithm to generate beautiful new colors.



76, 8.164, 31.322



91, 11.761, 31.396



79, 8.605, 85.399



40, 3.898, 31.251



35, 73.607, 41.704



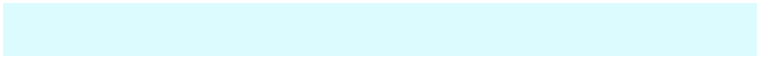
5, 16.664, 26.062

Inverse Universe

The Inverse Universe completely reimagines the original color for something new.



79, 7.561, 211.204



96, 10.711, 211.197



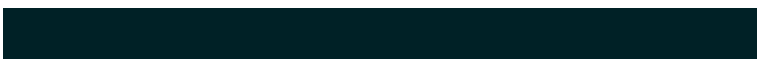
76, 8.532, 268.541



42, 3.669, 211.224



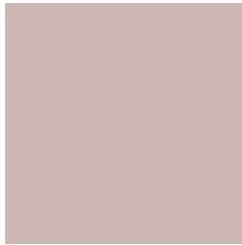
55, 31.845, 219.155



11, 12.049, 213.897

Previews

White Background



This preview shows how the CIELCh color 76, 8.165, 31.307 looks on a white background.

Color Contrast Check

Large Text (above 18pt) WCAG AA × Fail

Any Text WCAG AA × Fail

Large Text (above 18pt) WCAG AAA × Fail

Any Text WCAG AAA × Fail

Black Background



This preview shows how the CIE LCh color 76, 8.165, 31.307 looks on a black background.

Color Contrast Check

Large Text (above 18pt) WCAG AA ✓ Pass

Any Text WCAG AA ✓ Pass

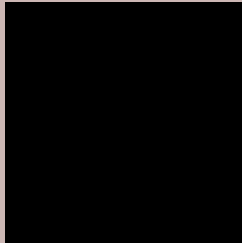
Large Text (above 18pt) WCAG AAA ✓ Pass

Any Text WCAG AAA ✓ Pass

If you want to check with other color combinations, try the [Color Contrast Checker](#).

CIELCh 76, 8.165, 31.307

Background



This preview shows how black text looks on a background with the CIELCh color 76, 8.165, 31.307.



This preview shows how white text looks on a background with the CIELCh color 76, 8.165, 31.307.

Color Blindness Simulation

Color vision deficiency is a very complex topic, and I could not describe the different causes any better than Wikipedia does, so if you want to learn more, you should check out their [article about color blindness](#).

Dichromacy



Original Color

76, 8.165, 31.307

Protanopia

76, 3.257, 74.685

Deuteranopia

76, 10.339, 23.169



Tritanopia
76, 11.966, 341.486

Trichromacy



Original Color
76, 8.165, 31.307

Protanomaly
76, 4.665, 46.954

Deuteranomaly
76, 9.227, 26.744

Tritanomaly
76, 9.416, 356.685

Monochromacy



Original Color
76, 8.165, 31.307

Achromatopsia
77, 0.009, 296.813

Achromatomaly
76, 2.662, 31.026

CSS Examples

Text

The CSS property to change the color of the text to CIELCh 76, 8.165, 31.307 is called "color". The color property can be set on classes, ids or directly on the HTML element.

This example shows how text in the color `rgb(204, 183, 180)` looks like.

```
.text, #text, p{  
    color:rgb(204, 183, 180)  
}
```

If you want to add a text shadow in that color use the text-shadow property, you can generate a text shadow directly with our [CSS Text Shadow Generator](#).

Here you see how black text with a 4 pixel rgb(204, 183, 180) colored shadow looks like.

```
.shadow{ text-shadow: 4px 4px 2px rgb(204, 183, 180) }
```

Border

The CSS property to change the border of an element to CIELCh 76, 8.165, 31.307 is called "border". The border property can be set on classes, ids or directly on the HTML element.

This example shows the color as border, it can be applied via the CSS property "border" or "border-color".

```
.border, #border, table{ border:4px solid rgb(204, 183, 180) }
```

If only the border color should be changed use the property `border-color`.

```
.border{ border-color:rgb(204, 183, 180) }
```

If you want to add a box shadow in that color use:

Here you see how a box with a 4 pixel `rgb(204, 183, 180)` colored shadow looks like.

```
.boxshadow{ -moz-box-shadow:4px 4px 4px  
4px rgb(204, 183, 180); -webkit-box-  
shadow:4px 4px 4px 4px rgb(204, 183, 180);  
box-shadow:4px 4px 4px 4px rgb(204, 183,  
180) }
```

Background

The CSS property to change the background color of an element to CIELCh 76, 8.165, 31.307 is called "background". The background property can be set on classes, ids or directly on the HTML element.

```
.background, #background, body{  
background: rgb(204, 183, 180) }
```

If only the background color should be changed can be used:

```
.background{ background-color: rgb(204,  
183, 180) }
```

This example shows the color as background, it is applied via the CSS property "background".

To optimize and compress your CSS code, you can use our [online CSS compressor and optimizer](#) based on csstidy. If you want to create a linear or radial gradient as background or border, check our [CSS Gradient Generator](#).

Hey! You found this booklet interesting? Support Converting Colors with the new Membership Option!

The pro membership hides all ads, plus gives you double the colors in the color bucket, and more awesome pro features!

[Learn more, Memberships starting at \\$2.50/m!](#)

**Follow me
on Twitter!**

@ConvertingColor