

Converting Colors

CIELCh(76, 8.587, 345.847)

Have a look what the booklet for
CIELCh(76, 8.587, 345.847) contains.

CIELCh(76, 8.595, 345.851)	3
<i>Conversions</i>	4
<i>Details</i>	6
<i>Harmonies</i>	12
<i>Previews</i>	21
<i>Color Blindness Simulation</i>	24
<i>CSS Examples</i>	27

Color

CIELCh(76, 8.595, 345.851)

Conversions

Conversions Part 1

Format	Color
Hex	C9B6BF
RGB	201, 182, 191
RGB Percent	79%, 71%, 75%
CMY	0.2101, 0.2846, 0.2493
CMYK	0.00, 0.09, 0.05, 0.21
HSL	332°, 15%, 75%
HSV	332°, 9%, 79%
XYZ	50.4692, 49.8872, 56.5059
YIQ	188.7070, 8.4350, 6.8270

Conversions

Conversions Part 2

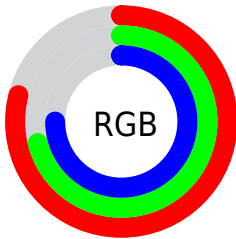
Format	Color
R_{YB}	201, 182, 191
Decimal	13219519
CIE Lab	76.00, 8.33, -2.10
CIE LCh	76, 8.595, 345.851
Yxy	49.8872, 0.3217, 0.3180
Android (android.graphics.Color)	4291409599 (0xFFC9B6BF)
YUV	188.7070, 1.1304, 10.7810
Hunter-Lab	70.6309, 3.9429, 2.0087

Details

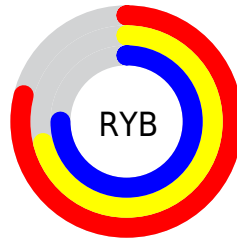
The CIELCh color $76, 8.595, 345.851$ is a light color, and the websafe version is hex `CCCCCC`. A complement of this color would be $79, 8.472, 164.347$, and the grayscale version is $77, 0.009, 296.813$.

A 20% lighter version of the original color is $96, 7.610, 342.579$, and $56, 8.805, 344.622$ is the 20% darker color. If you saturate the color by 10%, you get $71, 17.906, 346.826$, and if you desaturate by 10%, it is $81, 0.501, 165.890$.

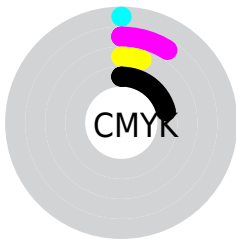
Distribution



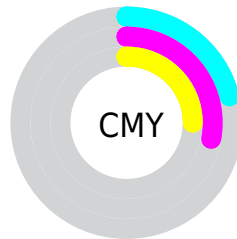
- Red (79%)
- Green (71%)
- Blue (75%)



- Red (79%)
- Yellow (71%)
- Blue (75%)



- Cyan (0%)
- Magenta (9%)
- Yellow (5%)
- Black (21%)



- Cyan (21%)
- Magenta (28%)
- Yellow (25%)


Brightness & Saturation Gradients

These gradients show how the CIELCh color 76, 8.595, 345.851 changes by changing the brightness by 10 percent. The first figure shows a shift by +10% for each color and the second figure -10%.

Similar to the brightness gradients but the following saturation gradients show a change of the CIELCh color 76, 8.595, 345.851 by changing the saturation by 10% instead.

 76, 8.595, 345.851

 76, 8.595, 345.851

 100, 8.595,
345.851

 66, 8.595, 345.851

 96, 8.595, 345.851

 56, 8.595, 345.851

 46, 8.595, 345.851

 36, 8.595, 345.851

 26, 8.595, 345.851

 16, 8.595, 345.851

 6, 8.595, 345.851

 0, 8.595, 345.851

 76, 8.595, 345.851

 76, 8.595, 345.851

71, 17.906,
346.826

81, 0.501, 165.890

66, 27.320,
347.900

87, 9.311, 164.330

61, 36.641,
349.128

93, 17.811,
163.604

56, 45.575,
350.564

96, 21.495,
167.751

52, 53.724,
352.288

96, 18.929,
181.578

49, 60.615,
354.410

96, 17.663,
198.335

46, 65.802,
357.076

44, 69.029, 0.455

43, 70.635, 4.588

Harmonies

Complementary

The Complementary color scheme is a pair of colors which are on the opposite of each other on the color wheel.



76, 8.595, 345.851



79, 8.472, 164.347

Rectangle

The Rectangle color scheme consists of four colors that form a rectangle on the color wheel.



76, 8.595, 345.851



76, 8.595, 35.851



76, 8.595, 165.851



76, 8.595, 215.851

Sweetspot

The Sweet Spot groups the original color and five complimentary colors.



76, 8.593, 345.856



98, 3.284, 345.200



76, 10.902, 310.051



52, 2.491, 345.301



0, 0.000, 0.000



53, 0.007, 296.813

Same Dimension

The Same Dimension uses a secret algorithm to generate beautiful new colors.



76, 8.593, 345.856



93, 12.158, 346.019



76, 7.076, 21.286



39, 5.111, 345.850



35, 60.528, 4.062



4, 17.611, 354.584

Inverse Universe

The Inverse Universe completely reimagines the original color for something new.



76, 8.593, 345.856



93, 12.158, 346.019



80, 6.666, 200.441



39, 5.111, 345.850



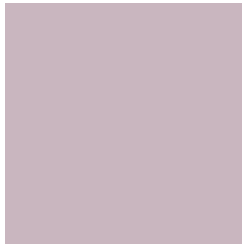
35, 60.528, 4.062



4, 17.611, 354.584

Previews

White Background



This preview shows how the CIELCh color 76, 8.595, 345.851 looks on a white background.

Color Contrast Check

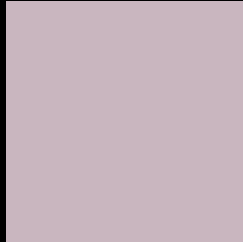
Large Text (above 18pt) WCAG AA × Fail

Any Text WCAG AA × Fail

Large Text (above 18pt) WCAG AAA × Fail

Any Text WCAG AAA × Fail

Black Background



This preview shows how the CIE LCh color 76, 8.595, 345.851 looks on a black background.

Color Contrast Check

Large Text (above 18pt) WCAG AA ✓ Pass

Any Text WCAG AA ✓ Pass

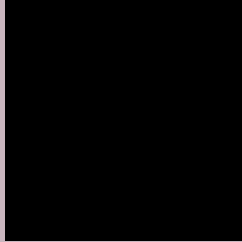
Large Text (above 18pt) WCAG AAA ✓ Pass

Any Text WCAG AAA ✓ Pass

If you want to check with other color combinations, try the [Color Contrast Checker](#).

CIELCh 76, 8.595, 345.851

Background



This preview shows how black text looks on a background with the CIELCh color 76, 8.595, 345.851.



This preview shows how white text looks on a background with the CIELCh color 76, 8.595, 345.851.

Color Blindness Simulation

Color vision deficiency is a very complex topic, and I could not describe the different causes any better than Wikipedia does, so if you want to learn more, you should check out their [article about color blindness](#).

Dichromacy



Original Color

76, 8.595, 345.851

Protanopia

76, 4.467, 304.780

Deuteranopia

76, 9.820, 347.075



Tritanopia
76, 10.582, 334.928

Trichromacy



Original Color
76, 8.595, 345.851

Protanomaly
76, 5.468, 327.828

Deuteranomaly
76, 9.509, 345.795

Tritanomaly
76, 9.857, 339.341

Monochromacy



Original Color
76, 8.595, 345.851

Achromatopsia
77, 0.009, 296.813

Achromatomaly
77, 3.072, 347.862

CSS Examples

Text

The CSS property to change the color of the text to CIELCh 76, 8.595, 345.851 is called "color". The color property can be set on classes, ids or directly on the HTML element.

This example shows how text in the color `rgb(201, 182, 191)` looks like.

```
.text, #text, p{  
    color:rgb(201, 182, 191)  
}
```

If you want to add a text shadow in that color use the text-shadow property, you can generate a text shadow directly with our [CSS Text Shadow Generator](#).

Here you see how black text with a 4 pixel rgb(201, 182, 191) colored shadow looks like.

```
.shadow{ text-shadow: 4px 4px 2px rgb(201, 182, 191) }
```

Border

The CSS property to change the border of an element to CIELCh 76, 8.595, 345.851 is called "border". The border property can be set on classes, ids or directly on the HTML element.

This example shows the color as border, it can be applied via the CSS property "border" or "border-color".

```
.border, #border, table{ border:4px solid rgb(201, 182, 191) }
```

If only the border color should be changed use the property `border-color`.

```
.border{ border-color:rgb(201, 182, 191) }
```

If you want to add a box shadow in that color use:

Here you see how a box with a 4 pixel `rgb(201, 182, 191)` colored shadow looks like.

```
.boxshadow{ -moz-box-shadow:4px 4px 4px  
4px rgb(201, 182, 191); -webkit-box-  
shadow:4px 4px 4px 4px rgb(201, 182, 191);  
box-shadow:4px 4px 4px 4px rgb(201, 182,  
191) }
```

Background

The CSS property to change the background color of an element to CIELCh 76, 8.595, 345.851 is called "background". The background property can be set on classes, ids or directly on the HTML element.

```
.background, #background, body{  
background: rgb(201, 182, 191) }
```

If only the background color should be changed can be used:

```
.background{ background-color: rgb(201,  
182, 191) }
```

This example shows the color as background, it is applied via the CSS property "background".

To optimize and compress your CSS code, you can use our [online CSS compressor and optimizer](#) based on csstidy. If you want to create a linear or radial gradient as background or border, check our [CSS Gradient Generator](#).

Hey! You found this booklet interesting? Support Converting Colors with the new Membership Option!

The pro membership hides all ads, plus gives you double the colors in the color bucket, and more awesome pro features!

[Learn more, Memberships starting at \\$2.50/m!](#)

**Follow me
on Twitter!**

@ConvertingColor