

Converting Colors

CIELCh(76, 8.631, 9.389)

Have a look what the booklet for
CIELCh(76, 8.631, 9.389) contains.

CIELCh(76, 8.462, 9.119)	3
<i>Conversions</i>	4
<i>Details</i>	6
<i>Harmonies</i>	11
<i>Previews</i>	20
<i>Color Blindness Simulation</i>	23
<i>CSS Examples</i>	26

Color

CIELCh(76, 8.462, 9.119)

Conversions

Conversions Part 1

Format	Color
Hex	CCB6B9
RGB	204, 182, 185
RGB Percent	80%, 71%, 73%
CMY	0.1994, 0.2857, 0.2739
CMYK	0.00, 0.11, 0.09, 0.20
HSL	352°, 18%, 76%
HSV	352°, 11%, 80%
XYZ	50.4770, 49.8872, 52.9526
YIQ	188.9200, 12.1490, 5.5970

Conversions

Conversions Part 2

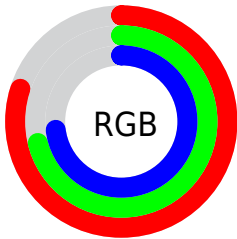
Format	Color
RYB	204, 182, 185
Decimal	13416121
CIELab	76.00, 8.36, 1.34
CIElCh	76, 8.462, 9.119
Yxy	49.8872, 0.3292, 0.3254
Android (android.graphics.Color)	4291606201 (0xFFCCB6B9)
YUV	188.9200, -1.9326, 13.2252
Hunter-Lab	70.6309, 3.9625, 4.9914

Details

The CIELCh color **76, 8.462, 9.119** is a light color, and the websafe version is hex **CCCCCC**. A complement of this color would be **80, 8.043, 187.410**, and the grayscale version is **77, 0.009, 296.813**.

A 20% lighter version of the original color is **95, 6.267, 5.571**, and **56, 8.638, 8.916** is the 20% darker color. If you saturate the color by 10%, you get **70, 16.803, 10.233**, and if you desaturate by 10%, it is **82, 0.593, 7.395**.

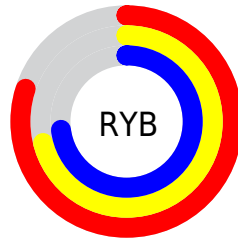
Distribution



Red (80%)

Green (71%)

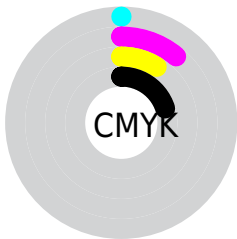
Blue (73%)



Red (80%)

Yellow (71%)

Blue (73%)

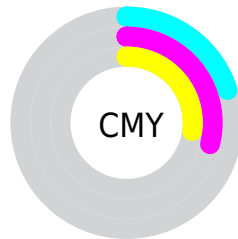


Cyan (0%)

Magenta (11%)

Yellow (9%)

Black (20%)



Cyan (20%)

Magenta (29%)

Yellow (27%)

Brightness & Saturation Gradients

These gradients show how the CIELCh color 76, 8.462, 9.119 changes by changing the brightness by 10 percent. The first figure shows a shift by +10% for each color and the second figure -10%.

Similar to the brightness gradients but the following saturation gradients show a change of the CIELCh color 76, 8.462, 9.119 by changing the saturation by 10% instead.

 76, 8.462, 9.119

 76, 8.462, 9.119

 100, 8.462, 9.119

 66, 8.462, 9.119

 96, 8.462, 9.119

 56, 8.462, 9.119

 46, 8.462, 9.119

 36, 8.462, 9.119

 26, 8.462, 9.119

 16, 8.462, 9.119

 6, 8.462, 9.119

 0, 8.462, 9.119

 76, 8.462, 9.119

 76, 8.462, 9.119

70, 16.803, 10.233

82, 0.593, 7.395

65, 25.582, 11.550

87, 6.798, 187.618

60, 34.693, 13.175

93, 13.738,
186.924

55, 43.952, 15.217

97, 16.824,
198.389

51, 53.083, 17.807

48, 61.761, 21.083

45, 69.691, 25.127

44, 76.681, 29.828

43, 82.291, 34.162

Harmonies

Complementary

The Complementary color scheme is a pair of colors which are on the opposite of each other on the color wheel.



76, 8.462, 9.119



80, 8.043, 187.410

Rectangle

The Rectangle color scheme consists of four colors that form a rectangle on the color wheel.



76, 8.462, 9.119



76, 8.462, 59.119



76, 8.462, 189.119



76, 8.462, 239.119

Sweetspot

The Sweet Spot groups the original color and five complimentary colors.



76, 8.460, 9.130



98, 2.757, 8.258



76, 13.709, 320.764



52, 2.095, 8.377



0, 0.000, 0.000



53, 0.007, 296.813

Same Dimension

The Same Dimension uses a secret algorithm to generate beautiful new colors.



76, 8.460, 9.130



91, 12.314, 9.380



78, 6.799, 56.783



40, 4.432, 8.987



34, 69.898, 33.382



4, 18.061, 12.725

Inverse Universe

The Inverse Universe completely reimagines the original color for something new.



76, 8.460, 9.130



91, 12.314, 9.380



78, 6.459, 238.876



40, 4.432, 8.987



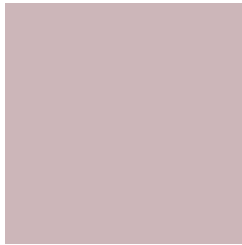
34, 69.898, 33.382



4, 18.061, 12.725

Previews

White Background



This preview shows how the CIELCh color 76, 8.462, 9.119 looks on a white background.

Color Contrast Check

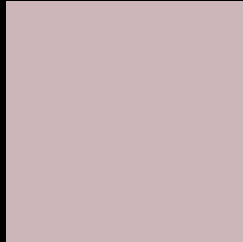
Large Text (above 18pt) WCAG AA × Fail

Any Text WCAG AA × Fail

Large Text (above 18pt) WCAG AAA × Fail

Any Text WCAG AAA × Fail

Black Background



This preview shows how the CIELCh color 76, 8.462, 9.119 looks on a black background.

Color Contrast Check

Large Text (above 18pt) WCAG AA ✓ Pass

Any Text WCAG AA ✓ Pass

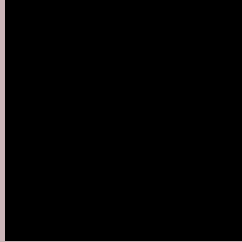
Large Text (above 18pt) WCAG AAA ✓ Pass

Any Text WCAG AAA ✓ Pass

If you want to check with other color combinations, try the [Color Contrast Checker](#).

CIELCh 76, 8.462, 9.119

Background



This preview shows how black text looks on a background with the CIELCh color 76, 8.462, 9.119.



This preview shows how white text looks on a background with the CIELCh color 76, 8.462, 9.119.

Color Blindness Simulation

Color vision deficiency is a very complex topic, and I could not describe the different causes any better than Wikipedia does, so if you want to learn more, you should check out their [article about color blindness](#).

Dichromacy



Original Color


76, 8.462, 9.119

Protanopia

76, 1.587, 359.407

Deuteranopia

76, 9.694, 7.419



Tritanopia
76, 11.680, 340.293

Trichromacy



Original Color
76, 8.462, 9.119

Protanomaly
76, 4.255, 5.030

Deuteranomaly
76, 9.320, 6.857

Tritanomaly
76, 10.466, 349.420

Monochromacy



Original Color
76, 8.462, 9.119

Achromatopsia
77, 0.009, 296.813

Achromatomaly
77, 3.032, 9.299

CSS Examples

Text

The CSS property to change the color of the text to CIELCh 76, 8.462, 9.119 is called "color". The color property can be set on classes, ids or directly on the HTML element.

This example shows how text in the color `rgb(204, 182, 185)` looks like.

```
.text, #text, p{  
    color:rgb(204, 182, 185)  
}
```

If you want to add a text shadow in that color use the text-shadow property, you can generate a text shadow directly with our [CSS Text Shadow Generator](#).

Here you see how black text with a 4 pixel rgb(204, 182, 185) colored shadow looks like.

```
.shadow{ text-shadow: 4px 4px 2px rgb(204, 182, 185) }
```

Border

The CSS property to change the border of an element to CIELCh 76, 8.462, 9.119 is called "border". The border property can be set on classes, ids or directly on the HTML element.

This example shows the color as border, it can be applied via the CSS property "border" or "border-color".

```
.border, #border, table{ border:4px solid rgb(204, 182, 185) }
```

If only the border color should be changed use the property `border-color`.

```
.border{ border-color:rgb(204, 182, 185) }
```

If you want to add a box shadow in that color use:

Here you see how a box with a 4 pixel `rgb(204, 182, 185)` colored shadow looks like.

```
.boxshadow{ -moz-box-shadow:4px 4px 4px  
4px rgb(204, 182, 185); -webkit-box-  
shadow:4px 4px 4px 4px rgb(204, 182, 185);  
box-shadow:4px 4px 4px 4px rgb(204, 182,  
185) }
```

Background

The CSS property to change the background color of an element to CIELCh 76, 8.462, 9.119 is called "background". The background property can be set on classes, ids or directly on the HTML element.

```
.background, #background, body{  
background: rgb(204, 182, 185) }
```

If only the background color should be changed can be used:

```
.background{ background-color: rgb(204,  
182, 185) }
```

This example shows the color as background, it is applied via the CSS property "background".

To optimize and compress your CSS code, you can use our [online CSS compressor and optimizer](#) based on csstidy. If you want to create a linear or radial gradient as background or border, check our [CSS Gradient Generator](#).

Hey! You found this booklet interesting? Support Converting Colors with the new Membership Option!

The pro membership hides all ads, plus gives you double the colors in the color bucket, and more awesome pro features!

[Learn more, Memberships starting at \\$2.50/m!](#)

**Follow me
on Twitter!**

@ConvertingColor