

Converting Colors

CIELCh(76, 9.029, 75.676)

Have a look what the booklet for
CIELCh(76, 9.029, 75.676) contains.

CIELCh(76, 9.029, 75.676)	3
<i>Conversions</i>	4
<i>Details</i>	6
<i>Harmonies</i>	11
<i>Previews</i>	20
<i>Color Blindness Simulation</i>	23
<i>CSS Examples</i>	26

Color

CIELCh(76, 9.029, 75.676)

Conversions

Conversions Part 1

Format	Color
Hex	C6B9AB
RGB	198, 185, 171
RGB Percent	78%, 73%, 67%
CMY	0.2219, 0.2729, 0.3278
CMYK	0.00, 0.07, 0.14, 0.22
HSL	31°, 19%, 73%
HSV	31°, 14%, 78%
XYZ	48.2222, 49.8872, 45.8179
YIQ	187.2910, 12.2420, -1.5980

Conversions

Conversions Part 2

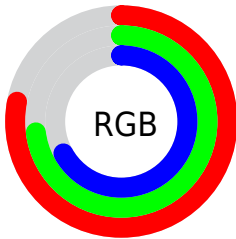
Format	Color
RYB	196, 198, 171
Decimal	13023659
CIELab	76.00, 2.23, 8.75
CIELCh	76, 9.029, 75.676
Yxy	49.8872, 0.3350, 0.3466
Android (android.graphics.Color)	4291213739 (0xFFC6B9AB)
YUV	187.2910, -8.0315, 9.3918
Hunter-Lab	70.6309, -1.7360, 10.9805

Details

The CIELCh color $76, 9.029, 75.676$ is a light color, and the websafe version is hex `CCCCCC`. A complement of this color would be $74, 8.764, 259.298$, and the grayscale version is $76, 0.009, 296.813$.

A 20% lighter version of the original color is $96, 9.197, 75.797$, and $56, 8.940, 75.421$ is the 20% darker color. If you saturate the color by 10%, you get $73, 16.011, 74.441$, and if you desaturate by 10%, it is $79, 2.341, 76.821$.

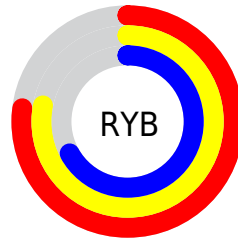
Distribution



Red (78%)

Green (73%)

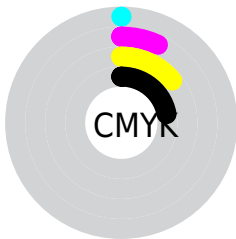
Blue (67%)



Red (77%)

Yellow (78%)

Blue (67%)

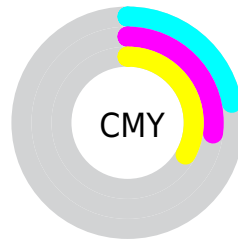


Cyan (0%)

Magenta (7%)

Yellow (14%)

Black (22%)



Cyan (22%)

Magenta (27%)

Yellow (33%)

Brightness & Saturation Gradients

These gradients show how the CIELCh color 76, 9.029, 75.676 changes by changing the brightness by 10 percent. The first figure shows a shift by +10% for each color and the second figure -10%.

Similar to the brightness gradients but the following saturation gradients show a change of the CIELCh color 76, 9.029, 75.676 by changing the saturation by 10% instead.

■ 76, 9.029, 75.676

■ 76, 9.029, 75.676

■ 100, 9.029, 75.676

■ 66, 9.029, 75.676

■ 96, 9.029, 75.676

■ 56, 9.029, 75.676

■ 46, 9.029, 75.676

■ 36, 9.029, 75.676

■ 26, 9.029, 75.676

■ 16, 9.029, 75.676

■ 6, 9.029, 75.676

■ 0, 9.029, 75.676

■ 76, 9.029, 75.676

■ 76, 9.029, 75.676

73, 16.011, 74.441

79, 2.341, 76.821

70, 23.299, 73.162

82, 4.077, 258.267

67, 30.888, 71.863

85, 10.252,
259.387

65, 38.733, 70.540

88, 16.208,
260.505

62, 46.710, 69.168

60, 54.545, 67.680

91, 15.793,
244.956

57, 61.700, 65.927

93, 15.666,
222.572

55, 67.302, 63.630

54, 70.118, 61.950

96, 17.696,
202.905

96, 18.583,
198.277

Harmonies

Complementary

The Complementary color scheme is a pair of colors which are on the opposite of each other on the color wheel.



76, 9.029, 75.676



74, 8.764, 259.298

Rectangle

The Rectangle color scheme consists of four colors that form a rectangle on the color wheel.



76, 9.029, 75.676



76, 9.029, 125.676



76, 9.029, 255.676



76, 9.029, 305.676

Sweetspot

The Sweet Spot groups the original color and five complimentary colors.



76, 9.030, 75.691



99, 3.182, 76.783



73, 12.388, 345.700



52, 2.266, 76.710



0, 0.000, 0.000



53, 0.007, 296.813

Same Dimension

The Same Dimension uses a secret algorithm to generate beautiful new colors.



76, 9.030, 75.691



94, 13.085, 75.367



79, 14.323, 109.562



40, 3.734, 76.201



45, 60.503, 62.527



7, 12.973, 59.751

Inverse Universe

The Inverse Universe completely reimagines the original color for something new.



74, 8.764, 259.298



92, 12.616, 259.698



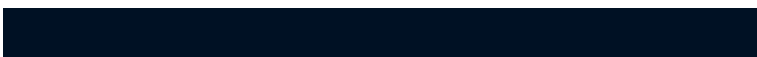
71, 14.774, 292.240



40, 3.664, 258.696



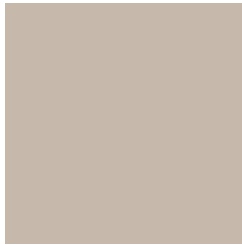
34, 53.166, 285.401



5, 14.321, 271.862

Previews

White Background



This preview shows how the CIELCh color 76, 9.029, 75.676 looks on a white background.

Color Contrast Check

Large Text (above 18pt) WCAG AA × Fail

Any Text WCAG AA × Fail

Large Text (above 18pt) WCAG AAA × Fail

Any Text WCAG AAA × Fail

Black Background



This preview shows how the CIELCh color 76, 9.029, 75.676 looks on a black background.

Color Contrast Check

Large Text (above 18pt) WCAG AA ✓ Pass

Any Text WCAG AA ✓ Pass

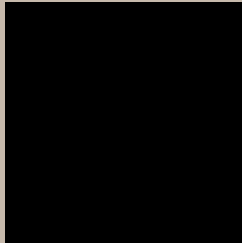
Large Text (above 18pt) WCAG AAA ✓ Pass

Any Text WCAG AAA ✓ Pass

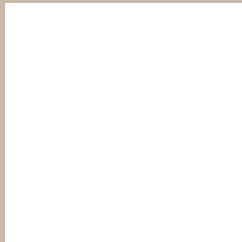
If you want to check with other color combinations, try the [Color Contrast Checker](#).

CIELCh 76, 9.029, 75.676

Background



This preview shows how black text looks on a background with the CIELCh color 76, 9.029, 75.676.



This preview shows how white text looks on a background with the CIELCh color 76, 9.029, 75.676.

Color Blindness Simulation

Color vision deficiency is a very complex topic, and I could not describe the different causes any better than Wikipedia does, so if you want to learn more, you should check out their [article about color blindness](#).

Dichromacy



Original Color

76, 9.029, 75.676

Protanopia

76, 8.466, 90.900

Deuteranopia

76, 12.670, 42.511



Tritanopia
76, 10.582, 334.928

Trichromacy



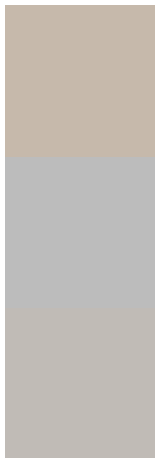
Original Color
76, 9.029, 75.676

Protanomaly
76, 8.426, 82.291

Deuteranomaly
76, 10.715, 53.225

Tritanomaly
76, 7.096, 2.342

Monochromacy



Original Color
76, 9.029, 75.676

Achromatopsia
76, 0.009, 296.813

Achromatomaly
76, 3.257, 74.685

CSS Examples

Text

The CSS property to change the color of the text to CIELCh 76, 9.029, 75.676 is called "color". The color property can be set on classes, ids or directly on the HTML element.

This example shows how text in the color `rgb(198, 185, 171)` looks like.

```
.text, #text, p{  
    color:rgb(198, 185, 171)  
}
```

If you want to add a text shadow in that color use the text-shadow property, you can generate a text shadow directly with our [CSS Text Shadow Generator](#).

Here you see how black text with a 4 pixel rgb(198, 185, 171) colored shadow looks like.

```
.shadow{ text-shadow: 4px 4px 2px rgb(198, 185, 171) }
```

Border

The CSS property to change the border of an element to CIELCh 76, 9.029, 75.676 is called "border". The border property can be set on classes, ids or directly on the HTML element.

This example shows the color as border, it can be applied via the CSS property "border" or "border-color".

```
.border, #border, table{ border:4px solid rgb(198, 185, 171) }
```

If only the border color should be changed use the property `border-color`.

```
.border{ border-color:rgb(198, 185, 171) }
```

If you want to add a box shadow in that color use:

Here you see how a box with a 4 pixel `rgb(198, 185, 171)` colored shadow looks like.

```
.boxshadow{ -moz-box-shadow:4px 4px 4px  
4px rgb(198, 185, 171); -webkit-box-  
shadow:4px 4px 4px 4px rgb(198, 185, 171);  
box-shadow:4px 4px 4px 4px rgb(198, 185,  
171) }
```

Background

The CSS property to change the background color of an element to CIELCh 76, 9.029, 75.676 is called "background". The background property can be set on classes, ids or directly on the HTML element.

```
.background, #background, body{  
background: rgb(198, 185, 171) }
```

If only the background color should be changed can be used:

```
.background{ background-color: rgb(198,  
185, 171) }
```

This example shows the color as background, it is applied via the CSS property "background".

To optimize and compress your CSS code, you can use our [online CSS compressor and optimizer](#) based on csstidy. If you want to create a linear or radial gradient as background or border, check our [CSS Gradient Generator](#).

Hey! You found this booklet interesting? Support Converting Colors with the new Membership Option!

The pro membership hides all ads, plus gives you double the colors in the color bucket, and more awesome pro features!

[Learn more, Memberships starting at \\$2.50/m!](#)

**Follow me
on Twitter!**

@ConvertingColor