

Converting Colors

CIELCh(76, 9.348, 54.712)

Have a look what the booklet for
CIELCh(76, 9.348, 54.712) contains.

CIELCh(76, 9.082, 55.898)	3
<i>Conversions</i>	4
<i>Details</i>	6
<i>Harmonies</i>	11
<i>Previews</i>	20
<i>Color Blindness Simulation</i>	23
<i>CSS Examples</i>	26

Color

CIELCh(76, 9.082, 55.898)

Conversions

Conversions Part 1

Format	Color
Hex	CBB8AE
RGB	203, 184, 174
RGB Percent	80%, 72%, 68%
CMY	0.2049, 0.2794, 0.3186
CMYK	0.00, 0.09, 0.14, 0.20
HSL	21°, 22%, 74%
HSV	21°, 14%, 80%
XYZ	49.2665, 49.8872, 46.9534
YIQ	188.5410, 14.5340, 0.9180

Conversions

Conversions Part 2

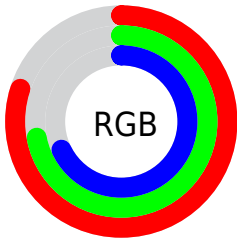
Format	Color
RYB	203, 189, 174
Decimal	13351086
CIELab	76.00, 5.09, 7.52
CIELCh	76, 9.082, 55.898
Yxy	49.8872, 0.3372, 0.3414
Android (android.graphics.Color)	4291541166 (0xFFCBB8AE)
YUV	188.5410, -7.1687, 12.6805
Hunter-Lab	70.6309, 0.9032, 10.0273

Details

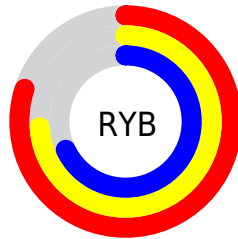
The CIELCh color $76, 9.082, 55.898$ is a light color, and the websafe version is hex `CCCCCC`. A complement of this color would be $77, 8.459, 238.600$, and the grayscale version is $76, 0.009, 296.813$.

A 20% lighter version of the original color is $96, 7.815, 65.488$, and $56, 9.067, 54.293$ is the 20% darker color. If you saturate the color by 10%, you get $72, 15.994, 55.162$, and if you desaturate by 10%, it is $80, 2.635, 56.600$.

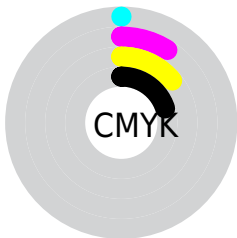
Distribution



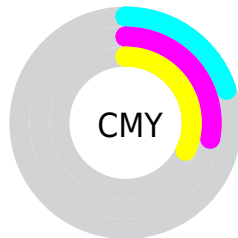
- Red (80%)
- Green (72%)
- Blue (68%)



- Red (80%)
- Yellow (74%)
- Blue (68%)



- Cyan (0%)
- Magenta (9%)
- Yellow (14%)
- Black (20%)



- Cyan (20%)
- Magenta (28%)
- Yellow (32%)

Brightness & Saturation Gradients

These gradients show how the CIELCh color 76, 9.082, 55.898 changes by changing the brightness by 10 percent. The first figure shows a shift by +10% for each color and the second figure -10%.

Similar to the brightness gradients but the following saturation gradients show a change of the CIELCh color 76, 9.082, 55.898 by changing the saturation by 10% instead.

 76, 9.082, 55.898

 76, 9.082, 55.898

 100, 9.082, 55.898

 66, 9.082, 55.898

 96, 9.082, 55.898

 56, 9.082, 55.898

 46, 9.082, 55.898

 36, 9.082, 55.898

 26, 9.082, 55.898

 16, 9.082, 55.898

 6, 9.082, 55.898

 0, 9.082, 55.898

 76, 9.082, 55.898

 76, 9.082, 55.898

72, 15.994, 55.162

80, 2.635, 56.600

68, 23.413, 54.456

84, 3.393, 237.769

65, 31.362, 53.821

88, 9.048, 238.534

61, 39.832, 53.267

92, 14.375,
239.369

58, 48.744, 52.782

95, 15.777,
207.579

55, 57.872, 52.298

52, 66.695, 51.633

97, 17.258,
198.361

50, 74.168, 50.382

48, 77.797, 49.539

Harmonies

Complementary

The Complementary color scheme is a pair of colors which are on the opposite of each other on the color wheel.



76, 9.082, 55.898



77, 8.459, 238.600

Rectangle

The Rectangle color scheme consists of four colors that form a rectangle on the color wheel.



76, 9.082, 55.898



76, 9.082, 105.898



76, 9.082, 235.898



76, 9.082, 285.898

Sweetspot

The Sweet Spot groups the original color and five complimentary colors.



76, 9.082, 55.914



98, 2.950, 56.609



74, 15.018, 336.663



52, 2.103, 56.577



0, 0.000, 0.000



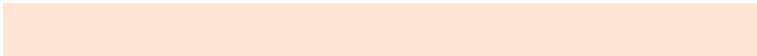
53, 0.007, 296.813

Same Dimension

The Same Dimension uses a secret algorithm to generate beautiful new colors.



76, 9.082, 55.914



92, 13.142, 55.691



80, 12.939, 100.744



41, 3.559, 56.280



40, 66.632, 50.067



6, 14.963, 40.984

Inverse Universe

The Inverse Universe completely reimagines the original color for something new.



77, 8.459, 238.600



93, 12.044, 238.936



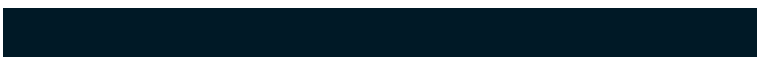
73, 13.192, 284.070



41, 3.403, 238.099



44, 38.141, 263.562



8, 12.554, 251.960

Previews

White Background



This preview shows how the CIELCh color 76, 9.082, 55.898 looks on a white background.

Color Contrast Check

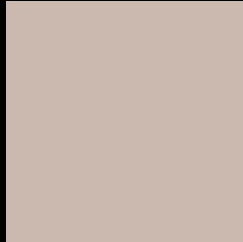
Large Text (above 18pt) WCAG AA × Fail

Any Text WCAG AA × Fail

Large Text (above 18pt) WCAG AAA × Fail

Any Text WCAG AAA × Fail

Black Background



This preview shows how the CIELCh color 76, 9.082, 55.898 looks on a black background.

Color Contrast Check

Large Text (above 18pt) WCAG AA ✓ Pass

Any Text WCAG AA ✓ Pass

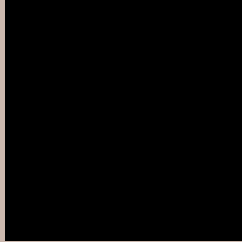
Large Text (above 18pt) WCAG AAA ✓ Pass

Any Text WCAG AAA ✓ Pass

If you want to check with other color combinations, try the [Color Contrast Checker](#).

CIELCh 76, 9.082, 55.898

Background



This preview shows how black text looks on a background with the CIELCh color 76, 9.082, 55.898.



This preview shows how white text looks on a background with the CIELCh color 76, 9.082, 55.898.

Color Blindness Simulation

Color vision deficiency is a very complex topic, and I could not describe the different causes any better than Wikipedia does, so if you want to learn more, you should check out their [article about color blindness](#).

Dichromacy



Original Color

76, 9.082, 55.898

Protanopia

76, 6.952, 86.957

Deuteranopia

76, 11.870, 38.574



Tritanopia
76, 11.966, 341.486

Trichromacy



Original Color
76, 9.082, 55.898

Protanomaly
76, 7.235, 74.016

Deuteranomaly
76, 10.593, 43.871

Tritanomaly
76, 9.068, 2.949

Monochromacy



Original Color
76, 9.082, 55.898

Achromatopsia
76, 0.009, 296.813

Achromatomaly
76, 3.066, 51.060

CSS Examples

Text

The CSS property to change the color of the text to CIELCh 76, 9.082, 55.898 is called "color". The color property can be set on classes, ids or directly on the HTML element.

This example shows how text in the color `rgb(203, 184, 174)` looks like.

```
.text, #text, p{  
    color:rgb(203, 184, 174)  
}
```

If you want to add a text shadow in that color use the text-shadow property, you can generate a text shadow directly with our [CSS Text Shadow Generator](#).

Here you see how black text with a 4 pixel rgb(203, 184, 174) colored shadow looks like.

```
.shadow{ text-shadow: 4px 4px 2px rgb(203, 184, 174) }
```

Border

The CSS property to change the border of an element to CIELCh 76, 9.082, 55.898 is called "border". The border property can be set on classes, ids or directly on the HTML element.

This example shows the color as border, it can be applied via the CSS property "border" or "border-color".

```
.border, #border, table{ border:4px solid rgb(203, 184, 174) }
```

If only the border color should be changed use the property `border-color`.

```
.border{ border-color:rgb(203, 184, 174) }
```

If you want to add a box shadow in that color use:

Here you see how a box with a 4 pixel `rgb(203, 184, 174)` colored shadow looks like.

```
.boxshadow{ -moz-box-shadow:4px 4px 4px  
4px rgb(203, 184, 174); -webkit-box-  
shadow:4px 4px 4px 4px rgb(203, 184, 174);  
box-shadow:4px 4px 4px 4px rgb(203, 184,  
174) }
```

Background

The CSS property to change the background color of an element to CIELCh 76, 9.082, 55.898 is called "background". The background property can be set on classes, ids or directly on the HTML element.

```
.background, #background, body{  
background: rgb(203, 184, 174) }
```

If only the background color should be changed can be used:

```
.background{ background-color: rgb(203,  
184, 174) }
```

This example shows the color as background, it is applied via the CSS property "background".

To optimize and compress your CSS code, you can use our [online CSS compressor and optimizer](#) based on csstidy. If you want to create a linear or radial gradient as background or border, check our [CSS Gradient Generator](#).

Hey! You found this booklet interesting? Support Converting Colors with the new Membership Option!

The pro membership hides all ads, plus gives you double the colors in the color bucket, and more awesome pro features!

[Learn more, Memberships starting at \\$2.50/m!](#)

**Follow me
on Twitter!**

@ConvertingColor