

Converting Colors

CIELCh(76, 9.935, 21.535)

Have a look what the booklet for
CIELCh(76, 9.935, 21.535) contains.

CIELCh(76, 9.914, 20.179)	3
<i>Conversions</i>	4
<i>Details</i>	6
<i>Harmonies</i>	11
<i>Previews</i>	20
<i>Color Blindness Simulation</i>	23
<i>CSS Examples</i>	26

Color

CIELCh(76, 9.914, 20.179)

Conversions

Conversions Part 1

Format	Color
Hex	CFB5B5
RGB	207, 181, 181
RGB Percent	81%, 71%, 71%
CMY	0.1866, 0.2886, 0.2886
CMYK	0.00, 0.13, 0.13, 0.19
HSL	0°, 21%, 76%
HSV	0°, 13%, 81%
XYZ	50.8333, 49.8872, 50.8806
YIQ	188.7740, 15.4960, 5.5120

Conversions

Conversions Part 2

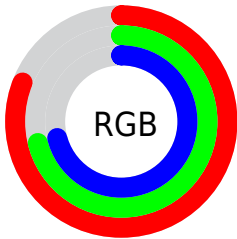
Format	Color
R _Y B	207, 181, 181
Decimal	13612469
CIE Lab	76.00, 9.31, 3.42
CIE LCh	76, 9.914, 20.179
Yxy	49.8872, 0.3353, 0.3291
Android (android.graphics.Color)	4291802549 (0xFFCFB5B5)
YUV	188.7740, -3.8326, 15.9842
Hunter-Lab	70.6309, 4.8629, 6.7307

Details

The CIELCh color $76, 9.914, 20.179$ is a light color, and the websafe version is hex `CCCCCC`. A complement of this color would be $81, 9.152, 198.807$, and the grayscale version is $77, 0.009, 296.813$.

A 20% lighter version of the original color is $95, 6.460, 19.746$, and $56, 9.801, 20.418$ is the 20% darker color. If you saturate the color by 10%, you get $70, 18.527, 21.090$, and if you desaturate by 10%, it is $82, 1.931, 19.278$.

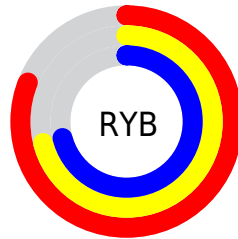
Distribution



Red (81%)

Green (71%)

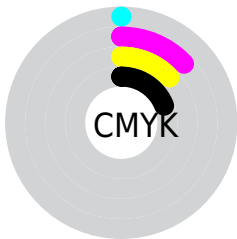
Blue (71%)



Red (81%)

Yellow (71%)

Blue (71%)

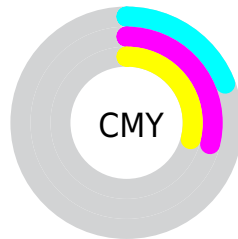


Cyan (0%)

Magenta (13%)

Yellow (13%)

Black (19%)



Cyan (19%)

Magenta (29%)

Yellow (29%)


Brightness & Saturation Gradients

These gradients show how the CIELCh color 76, 9.914, 20.179 changes by changing the brightness by 10 percent. The first figure shows a shift by +10% for each color and the second figure -10%.


Similar to the brightness gradients but the following saturation gradients show a change of the CIELCh color 76, 9.914, 20.179 by changing the saturation by 10% instead.

 76, 9.914, 20.179  76, 9.914, 20.179

 100, 9.914, 20.179  66, 9.914, 20.179

 96, 9.914, 20.179  56, 9.914, 20.179

 46, 9.914, 20.179

 36, 9.914, 20.179

 26, 9.914, 20.179

 16, 9.914, 20.179

 6, 9.914, 20.179

 0, 9.914, 20.179

 76, 9.914, 20.179

 76, 9.914, 20.179

70, 18.527, 21.090

82, 1.931, 19.278

65, 27.770, 22.236

88, 5.448, 199.147

60, 37.576, 23.730

94, 12.276,
198.672

55, 47.792, 25.678

97, 15.812,
198.454

51, 58.166, 28.187

48, 68.341, 31.301

45, 77.788, 34.846

44, 85.429, 38.139

43, 89.492, 40.002

Harmonies

Complementary

The Complementary color scheme is a pair of colors which are on the opposite of each other on the color wheel.



76, 9.914, 20.179



81, 9.152, 198.807

Rectangle

The Rectangle color scheme consists of four colors that form a rectangle on the color wheel.



76, 9.914, 20.179



76, 9.914, 70.179



76, 9.914, 200.179



76, 9.914, 250.179

Sweetspot

The Sweet Spot groups the original color and five complimentary colors.



76, 9.912, 20.190



97, 3.616, 19.480



77, 16.920, 325.112



51, 2.577, 19.557



0, 0.000, 0.000



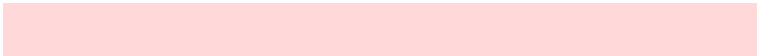
53, 0.007, 296.813

Same Dimension

The Same Dimension uses a secret algorithm to generate beautiful new colors.



76, 9.912, 20.190



90, 14.166, 20.409



79, 8.500, 73.848



41, 4.459, 19.941



35, 76.453, 39.866



4, 20.016, 19.475

Inverse Universe

The Inverse Universe completely reimagines the original color for something new.



81, 9.152, 198.807



97, 12.849, 198.662



78, 8.241, 257.136



43, 4.203, 198.990



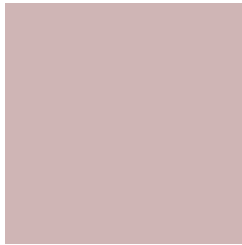
62, 36.704, 196.412



14, 14.036, 196.407

Previews

White Background



This preview shows how the CIELCh color 76, 9.914, 20.179 looks on a white background.

Color Contrast Check

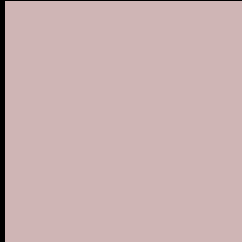
Large Text (above 18pt) WCAG AA × Fail

Any Text WCAG AA × Fail

Large Text (above 18pt) WCAG AAA × Fail

Any Text WCAG AAA × Fail

Black Background



This preview shows how the CIE LCh color 76, 9.914, 20.179 looks on a black background.

Color Contrast Check

Large Text (above 18pt) WCAG AA ✓ Pass

Any Text WCAG AA ✓ Pass

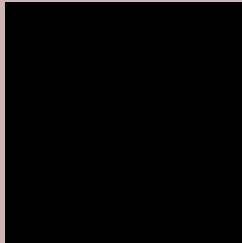
Large Text (above 18pt) WCAG AAA ✓ Pass

Any Text WCAG AAA ✓ Pass

If you want to check with other color combinations, try the [Color Contrast Checker](#).

CIELCh 76, 9.914, 20.179

Background



This preview shows how black text looks on a background with the CIELCh color 76, 9.914, 20.179.



This preview shows how white text looks on a background with the CIELCh color 76, 9.914, 20.179.

Color Blindness Simulation

Color vision deficiency is a very complex topic, and I could not describe the different causes any better than Wikipedia does, so if you want to learn more, you should check out their [article about color blindness](#).

Dichromacy



Original Color

76, 9.914, 20.179

Protanopia

76, 2.181, 66.730

Deuteranopia

76, 10.303, 20.213



Tritanopia
76, 13.172, 345.762

Trichromacy



Original Color
76, 9.914, 20.179

Protanomaly
76, 4.638, 33.004

Deuteranomaly
76, 10.303, 20.213

Tritanomaly
76, 11.020, 357.437

Monochromacy



Original Color
76, 9.914, 20.179

Achromatopsia
77, 0.009, 296.813

Achromatomaly
76, 3.741, 19.569

CSS Examples

Text

The CSS property to change the color of the text to CIELCh 76, 9.914, 20.179 is called "color". The color property can be set on classes, ids or directly on the HTML element.

This example shows how text in the color `rgb(207, 181, 181)` looks like.

```
.text, #text, p{  
    color:rgb(207, 181, 181)  
}
```

If you want to add a text shadow in that color use the text-shadow property, you can generate a text shadow directly with our [CSS Text Shadow Generator](#).

Here you see how black text with a 4 pixel rgb(207, 181, 181) colored shadow looks like.

```
.shadow{ text-shadow: 4px 4px 2px rgb(207, 181, 181) }
```

Border

The CSS property to change the border of an element to CIELCh 76, 9.914, 20.179 is called "border". The border property can be set on classes, ids or directly on the HTML element.

This example shows the color as border, it can be applied via the CSS property "border" or "border-color".

```
.border, #border, table{ border:4px solid rgb(207, 181, 181) }
```

If only the border color should be changed use the property `border-color`.

```
.border{ border-color:rgb(207, 181, 181) }
```

If you want to add a box shadow in that color use:

Here you see how a box with a 4 pixel `rgb(207, 181, 181)` colored shadow looks like.

```
.boxshadow{ -moz-box-shadow:4px 4px 4px  
4px rgb(207, 181, 181); -webkit-box-  
shadow:4px 4px 4px 4px rgb(207, 181, 181);  
box-shadow:4px 4px 4px 4px rgb(207, 181,  
181) }
```

Background

The CSS property to change the background color of an element to CIELCh 76, 9.914, 20.179 is called "background". The background property can be set on classes, ids or directly on the HTML element.

```
.background, #background, body{  
background: rgb(207, 181, 181) }
```

If only the background color should be changed can be used:

```
.background{ background-color: rgb(207,  
181, 181) }
```

This example shows the color as background, it is applied via the CSS property "background".

To optimize and compress your CSS code, you can use our [online CSS compressor and optimizer](#) based on csstidy. If you want to create a linear or radial gradient as background or border, check our [CSS Gradient Generator](#).

Hey! You found this booklet interesting? Support Converting Colors with the new Membership Option!

The pro membership hides all ads, plus gives you double the colors in the color bucket, and more awesome pro features!

[Learn more, Memberships starting at \\$2.50/m!](#)

**Follow me
on Twitter!**

@ConvertingColor