

Converting Colors

CIELCh(76, 9.938, 73.548)

Have a look what the booklet for
CIELCh(76, 9.938, 73.548) contains.

CIELCh(76, 9.927, 73.556)	3
<i>Conversions</i>	4
<i>Details</i>	6
<i>Harmonies</i>	11
<i>Previews</i>	20
<i>Color Blindness Simulation</i>	23
<i>CSS Examples</i>	26

Color

CIELCh(76, 9.927, 73.556)

Conversions

Conversions Part 1

Format	Color
Hex	C8B9AA
RGB	200, 185, 170
RGB Percent	78%, 73%, 67%
CMY	0.2156, 0.2744, 0.3333
CMYK	0.00, 0.07, 0.15, 0.22
HSL	30°, 21%, 73%
HSV	30°, 15%, 78%
XYZ	48.4315, 49.8872, 45.1129
YIQ	187.7750, 13.7550, -1.4850

Conversions

Conversions Part 2

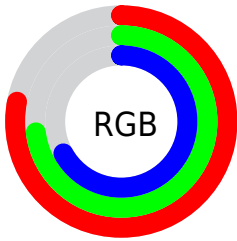
Format	Color
R _{YB}	200, 200, 170
Decimal	13154730
CIE Lab	76.00, 2.81, 9.52
CIE LCh	76, 9.927, 73.556
Yxy	49.8872, 0.3377, 0.3478
Android (android.graphics.Color)	4291344810 (0xFFC8B9AA)
YUV	187.7750, -8.7631, 10.7213
Hunter-Lab	70.6309, -1.2069, 11.5723

Details

The CIELCh color $76, 9.927, 73.556$ is a light color, and the websafe version is hex `CCCCCC`. A complement of this color would be $74, 9.559, 257.508$, and the grayscale version is $76, 0.009, 296.813$.

A 20% lighter version of the original color is $96, 9.631, 77.413$, and $56, 9.906, 73.102$ is the 20% darker color. If you saturate the color by 10%, you get $73, 16.941, 72.341$, and if you desaturate by 10%, it is $79, 3.230, 74.718$.

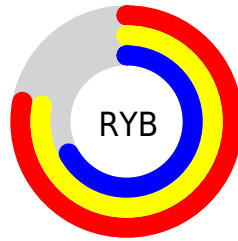
Distribution



Red (78%)

Green (73%)

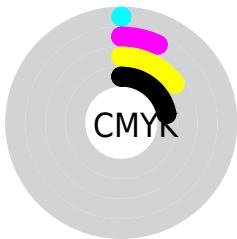
Blue (67%)



Red (78%)

Yellow (78%)

Blue (67%)

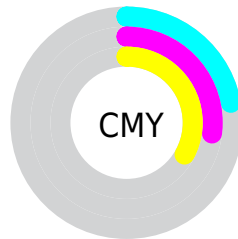


Cyan (0%)

Magenta (7%)

Yellow (15%)

Black (22%)



Cyan (22%)

Magenta (27%)

Yellow (33%)


Brightness & Saturation Gradients

These gradients show how the CIELCh color 76, 9.927, 73.556 changes by changing the brightness by 10 percent. The first figure shows a shift by +10% for each color and the second figure -10%.

Similar to the brightness gradients but the following saturation gradients show a change of the CIELCh color 76, 9.927, 73.556 by changing the saturation by 10% instead.

 76, 9.927, 73.556  76, 9.927, 73.556

 100, 9.927, 73.556  66, 9.927, 73.556

 96, 9.927, 73.556  56, 9.927, 73.556

 46, 9.927, 73.556

 36, 9.927, 73.556

 26, 9.927, 73.556

 16, 9.927, 73.556

 6, 9.927, 73.556

 0, 9.927, 73.556

 76, 9.927, 73.556  76, 9.927, 73.556

73, 16.941, 72.341

79, 3.230, 74.718

70, 24.286, 71.091

82, 3.177, 256.146

67, 31.959, 69.828

85, 9.321, 257.235

64, 39.911, 68.546

88, 15.232,
258.346

62, 48.009, 67.217

91, 15.220,
241.970

59, 55.958, 65.764

57, 63.177, 64.014

94, 15.511,
218.043

54, 68.732, 61.658

96, 18.097,
198.308

53, 71.069, 60.381

Harmonies

Complementary

The Complementary color scheme is a pair of colors which are on the opposite of each other on the color wheel.



76, 9.927, 73.556



74, 9.559, 257.508

Rectangle

The Rectangle color scheme consists of four colors that form a rectangle on the color wheel.



76, 9.927, 73.556



76, 9.927, 123.556



76, 9.927, 253.556



76, 9.927, 303.556

Sweetspot

The Sweet Spot groups the original color and five complimentary colors.



76, 9.928, 73.570



98, 3.140, 74.805



73, 13.910, 344.905



52, 2.236, 74.735



0, 0.000, 0.000



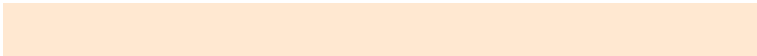
53, 0.007, 296.813

Same Dimension

The Same Dimension uses a secret algorithm to generate beautiful new colors.



76, 9.928, 73.570



93, 14.621, 73.173



80, 15.876, 108.735



40, 3.687, 74.238



44, 60.927, 60.984



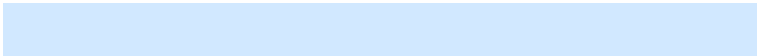
7, 12.953, 57.477

Inverse Universe

The Inverse Universe completely reimagines the original color for something new.



74, 9.559, 257.508



91, 13.946, 258.017



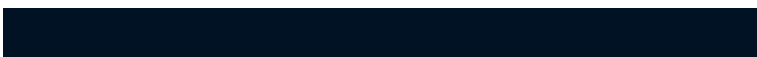
71, 16.427, 291.793



40, 3.608, 256.707



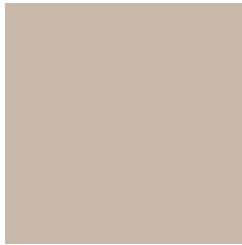
35, 51.255, 283.625



5, 14.021, 270.320

Previews

White Background



This preview shows how the CIELCh color 76, 9.927, 73.556 looks on a white background.

Color Contrast Check

Large Text (above 18pt) WCAG AA × Fail

Any Text WCAG AA × Fail

Large Text (above 18pt) WCAG AAA × Fail

Any Text WCAG AAA × Fail

Black Background



This preview shows how the CIELCh color 76, 9.927, 73.556 looks on a black background.

Color Contrast Check

Large Text (above 18pt) WCAG AA ✓ Pass

Any Text WCAG AA ✓ Pass

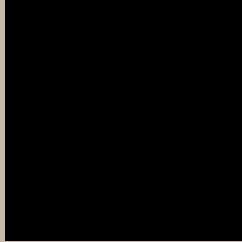
Large Text (above 18pt) WCAG AAA ✓ Pass

Any Text WCAG AAA ✓ Pass

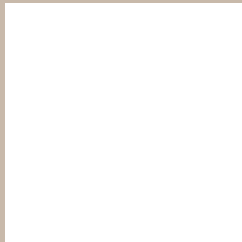
If you want to check with other color combinations, try the [Color Contrast Checker](#).

CIELCh 76, 9.927, 73.556

Background



This preview shows how black text looks on a background with the CIELCh color 76, 9.927, 73.556.



This preview shows how white text looks on a background with the CIELCh color 76, 9.927, 73.556.

Color Blindness Simulation

Color vision deficiency is a very complex topic, and I could not describe the different causes any better than Wikipedia does, so if you want to learn more, you should check out their [article about color blindness](#).

Dichromacy



Original Color

76, 9.927, 73.556

Protanopia

76, 9.101, 89.575

Deuteranopia

76, 13.276, 43.948



Tritanopia
76, 11.124, 337.736

Trichromacy



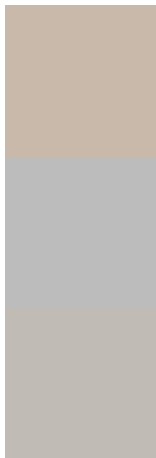
Original Color
76, 9.927, 73.556

Protanomaly
76, 9.086, 81.562

Deuteranomaly
76, 11.744, 50.086

Tritanomaly
76, 7.831, 4.113

Monochromacy



Original Color
76, 9.927, 73.556

Achromatopsia
76, 0.009, 296.813

Achromatomaly
76, 3.711, 79.381

CSS Examples

Text

The CSS property to change the color of the text to CIELCh 76, 9.927, 73.556 is called "color". The color property can be set on classes, ids or directly on the HTML element.

This example shows how text in the color `rgb(200, 185, 170)` looks like.

```
.text, #text, p{  
    color:rgb(200, 185, 170)  
}
```

If you want to add a text shadow in that color use the text-shadow property, you can generate a text shadow directly with our [CSS Text Shadow Generator](#).

Here you see how black text with a 4 pixel rgb(200, 185, 170) colored shadow looks like.

```
.shadow{ text-shadow: 4px 4px 2px rgb(200, 185, 170) }
```

Border

The CSS property to change the border of an element to CIELCh 76, 9.927, 73.556 is called "border". The border property can be set on classes, ids or directly on the HTML element.

This example shows the color as border, it can be applied via the CSS property "border" or "border-color".

```
.border, #border, table{ border:4px solid rgb(200, 185, 170) }
```

If only the border color should be changed use the property border-color.

```
.border{ border-color:rgb(200, 185, 170) }
```

If you want to add a box shadow in that color use:

Here you see how a box with a 4 pixel rgb(200, 185, 170) colored shadow looks like.

```
.boxshadow{ -moz-box-shadow:4px 4px 4px  
4px rgb(200, 185, 170); -webkit-box-  
shadow:4px 4px 4px 4px rgb(200, 185, 170);  
box-shadow:4px 4px 4px 4px rgb(200, 185,  
170) }
```

Background

The CSS property to change the background color of an element to CIELCh 76, 9.927, 73.556 is called "background". The background property can be set on classes, ids or directly on the HTML element.

```
.background, #background, body{  
background: rgb(200, 185, 170) }
```

If only the background color should be changed can be used:

```
.background{ background-color: rgb(200,  
185, 170) }
```

This example shows the color as background, it is applied via the CSS property "background".

To optimize and compress your CSS code, you can use our [online CSS compressor and optimizer](#) based on csstidy. If you want to create a linear or radial gradient as background or border, check our [CSS Gradient Generator](#).

Hey! You found this booklet interesting? Support Converting Colors with the new Membership Option!

The pro membership hides all ads, plus gives you double the colors in the color bucket, and more awesome pro features!

[Learn more, Memberships starting at \\$2.50/m!](#)

**Follow me
on Twitter!**

@ConvertingColor