

Converting Colors

CIELCh(77, 10.191, 14.049)

Have a look what the booklet for
CIELCh(77, 10.191, 14.049) contains.

CIELCh(77, 10.284, 14.264)	3
<i>Conversions</i>	4
<i>Details</i>	6
<i>Harmonies</i>	11
<i>Previews</i>	20
<i>Color Blindness Simulation</i>	23
<i>CSS Examples</i>	26

Color

CIELCh(77, 10.284, 14.264)

Conversions

Conversions Part 1

Format	Color
Hex	D3B8BA
RGB	211, 184, 186
RGB Percent	83%, 72%, 73%
CMY	0.1735, 0.2793, 0.2715
CMYK	0.00, 0.13, 0.12, 0.17
HSL	356°, 23%, 77%
HSV	356°, 13%, 83%
XYZ	52.7244, 51.5317, 53.4911
YIQ	192.3010, 15.4500, 6.3460

Conversions

Conversions Part 2

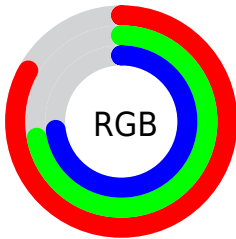
Format	Color
R _Y B	211, 184, 186
Decimal	13875386
CIE Lab	77.00, 9.97, 2.53
CIE LCh	77, 10.284, 14.264
Yxy	51.5317, 0.3342, 0.3267
Android (android.graphics.Color)	4292065466 (0xFFD3B8BA)
YUV	192.3010, -3.1064, 16.3990
Hunter-Lab	71.7856, 5.4781, 6.0700

Details

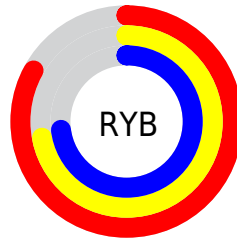
The CIELCh color **77, 10.284, 14.264** is a light color, and the websafe version is hex **CCCCCC**. A complement of this color would be **82, 9.584, 192.412**, and the grayscale version is **78, 0.009, 296.813**.

A 20% lighter version of the original color is **96, 5.448, 8.855**, and **57, 10.176, 14.081** is the 20% darker color. If you saturate the color by 10%, you get **71, 18.943, 15.334**, and if you desaturate by 10%, it is **83, 2.177, 13.230**.

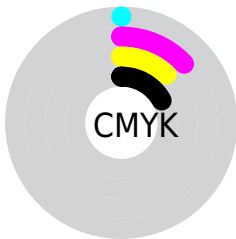
Distribution



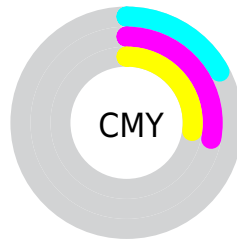
- Red (83%)
- Green (72%)
- Blue (73%)



- Red (83%)
- Yellow (72%)
- Blue (73%)



- Cyan (0%)
- Magenta (13%)
- Yellow (12%)
- Black (17%)



- Cyan (17%)
- Magenta (28%)
- Yellow (27%)

Brightness & Saturation Gradients

These gradients show how the CIELCh color 77, 10.284, 14.264 changes by changing the brightness by 10 percent. The first figure shows a shift by +10% for each color and the second figure -10%.

Similar to the brightness gradients but the following saturation gradients show a change of the CIELCh color 77, 10.284, 14.264 by changing the saturation by 10% instead.

■ 77, 10.284, 14.264

■ 77, 10.284, 14.264

■ 100, 10.284,
14.264

■ 67, 10.284, 14.264

■ 97, 10.284, 14.264

■ 57, 10.284, 14.264

■ 47, 10.284, 14.264

■ 37, 10.284, 14.264

■ 27, 10.284, 14.264

■ 17, 10.284, 14.264

■ 7, 10.284, 14.264

■ 0, 10.284, 14.264

■ 77, 10.284, 14.264

■ 77, 10.284, 14.264

71, 18.943, 15.334

83, 2.177, 13.230

66, 28.128, 16.640

89, 5.382, 192.900

61, 37.739, 18.288

95, 12.431,
192.261

56, 47.591, 20.393

97, 14.759,
198.522

52, 57.411, 23.083

49, 66.865, 26.456

46, 75.609, 30.483

45, 83.186, 34.792

44, 87.542, 37.418

Harmonies

Complementary

The Complementary color scheme is a pair of colors which are on the opposite of each other on the color wheel.



77, 10.284, 14.264



82, 9.584, 192.412

Rectangle

The Rectangle color scheme consists of four colors that form a rectangle on the color wheel.



77, 10.284, 14.264



77, 10.284, 64.264



77, 10.284, 194.264



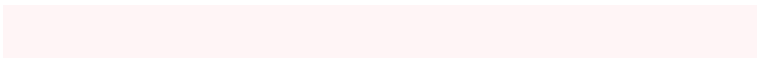
77, 10.284, 244.264

Sweetspot

The Sweet Spot groups the original color and five complimentary colors.



77, 10.282, 14.274



97, 3.638, 13.405



77, 17.071, 322.799



51, 2.592, 13.493



0, 0.000, 0.000



53, 0.007, 296.813

Same Dimension

The Same Dimension uses a secret algorithm to generate beautiful new colors.



77, 10.282, 14.274



90, 14.172, 14.507



80, 8.454, 64.489



41, 4.474, 13.948



35, 73.475, 36.795



4, 20.035, 16.019

Inverse Universe

The Inverse Universe completely reimagines the original color for something new.



77, 10.282, 14.274



90, 14.172, 14.507



80, 8.049, 247.481



41, 4.474, 13.948



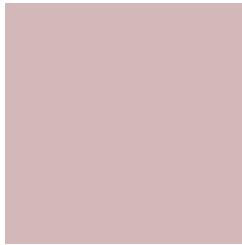
35, 73.475, 36.795



4, 20.035, 16.019

Previews

White Background



This preview shows how the CIELCh color 77, 10.284, 14.264 looks on a white background.

Color Contrast Check

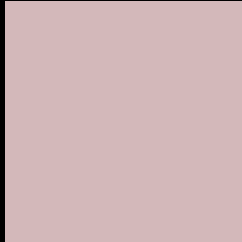
Large Text (above 18pt) WCAG AA × Fail

Any Text WCAG AA × Fail

Large Text (above 18pt) WCAG AAA × Fail

Any Text WCAG AAA × Fail

Black Background



This preview shows how the CIE LCh color 77, 10.284, 14.264 looks on a black background.

Color Contrast Check

Large Text (above 18pt) WCAG AA ✓ Pass

Any Text WCAG AA ✓ Pass

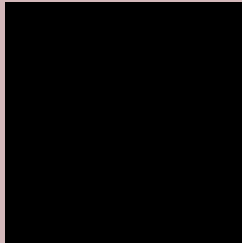
Large Text (above 18pt) WCAG AAA ✓ Pass

Any Text WCAG AAA ✓ Pass

If you want to check with other color combinations, try the [Color Contrast Checker](#).

CIELCh 77, 10.284, 14.264

Background



This preview shows how black text looks on a background with the CIELCh color 77, 10.284, 14.264.



This preview shows how white text looks on a background with the CIELCh color 77, 10.284, 14.264.

Color Blindness Simulation

Color vision deficiency is a very complex topic, and I could not describe the different causes any better than Wikipedia does, so if you want to learn more, you should check out their [article about color blindness](#).

Dichromacy



Original Color


77, 10.284, 14.264

Protanopia

77, 1.856, 19.269

Deuteranopia

77, 9.900, 13.996



Tritanopia
77, 13.455, 346.704

Trichromacy



Original Color
77, 10.284, 14.264

Protanomaly
77, 4.895, 13.428

Deuteranomaly
77, 9.900, 13.996

Tritanomaly
77, 11.891, 356.541

Monochromacy



Original Color
77, 10.284, 14.264

Achromatopsia
78, 0.009, 296.813

Achromatomaly
77, 3.766, 11.411

CSS Examples

Text

The CSS property to change the color of the text to CIELCh 77, 10.284, 14.264 is called "color". The color property can be set on classes, ids or directly on the HTML element.

This example shows how text in the color `rgb(211, 184, 186)` looks like.

```
.text, #text, p{  
    color:rgb(211, 184, 186)  
}
```

If you want to add a text shadow in that color use the text-shadow property, you can generate a text shadow directly with our [CSS Text Shadow Generator](#).

Here you see how black text with a 4 pixel rgb(211, 184, 186) colored shadow looks like.

```
.shadow{ text-shadow: 4px 4px 2px rgb(211, 184, 186) }
```

Border

The CSS property to change the border of an element to CIELCh 77, 10.284, 14.264 is called "border". The border property can be set on classes, ids or directly on the HTML element.

This example shows the color as border, it can be applied via the CSS property "border" or "border-color".

```
.border, #border, table{ border:4px solid rgb(211, 184, 186) }
```

If only the border color should be changed use the property `border-color`.

```
.border{ border-color:rgb(211, 184, 186) }
```

If you want to add a box shadow in that color use:

Here you see how a box with a 4 pixel `rgb(211, 184, 186)` colored shadow looks like.

```
.boxshadow{ -moz-box-shadow:4px 4px 4px 4px rgb(211, 184, 186); -webkit-box-shadow:4px 4px 4px 4px rgb(211, 184, 186); box-shadow:4px 4px 4px 4px rgb(211, 184, 186) }
```

Background

The CSS property to change the background color of an element to CIELCh 77, 10.284, 14.264 is called "background". The background property can be set on classes, ids or directly on the HTML element.

```
.background, #background, body{  
background: rgb(211, 184, 186) }
```

If only the background color should be changed can be used:

```
.background{ background-color: rgb(211,  
184, 186) }
```

This example shows the color as background, it is applied via the CSS property "background".

To optimize and compress your CSS code, you can use our [online CSS compressor and optimizer](#) based on csstidy. If you want to create a linear or radial gradient as background or border, check our [CSS Gradient Generator](#).

Hey! You found this booklet interesting? Support Converting Colors with the new Membership Option!

The pro membership hides all ads, plus gives you double the colors in the color bucket, and more awesome pro features!

[Learn more, Memberships starting at \\$2.50/m!](#)

**Follow me
on Twitter!**

@ConvertingColor