

Converting Colors

CIELCh(77, 11.052, 3.238)

Have a look what the booklet for
CIELCh(77, 11.052, 3.238) contains.

CIELCh(77, 11.024, 3.409)	3
<i>Conversions</i>	4
<i>Details</i>	6
<i>Harmonies</i>	11
<i>Previews</i>	20
<i>Color Blindness Simulation</i>	23
<i>CSS Examples</i>	26

Color

CIELCh(77, 11.024, 3.409)

Conversions

Conversions Part 1

Format	Color
Hex	D3B7BD
RGB	211, 183, 189
RGB Percent	83%, 72%, 74%
CMY	0.1716, 0.2814, 0.2579
CMYK	0.00, 0.13, 0.10, 0.17
HSL	347°, 24%, 77%
HSV	347°, 13%, 83%
XYZ	53.1249, 51.5317, 55.4240
YIQ	192.0560, 14.7620, 7.8020

Conversions

Conversions Part 2

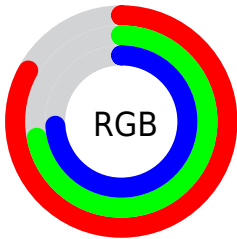
Format	Color
R _Y B	211, 183, 189
Decimal	13875133
CIE Lab	77.00, 11.00, 0.66
CIE LCh	77, 11.024, 3.409
Yxy	51.5317, 0.3319, 0.3219
Android (android.graphics.Color)	4292065213 (0xFFD3B7BD)
YUV	192.0560, -1.5066, 16.6139
Hunter-Lab	71.7856, 6.4739, 4.4735

Details

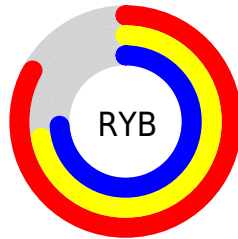
The CIELCh color **77, 11.024, 3.409** is a light color, and the websafe version is hex **CCCCCC**. A complement of this color would be **82, 10.481, 181.025**, and the grayscale version is **78, 0.009, 296.813**.

A 20% lighter version of the original color is **96, 6.476, 351.469**, and **57, 10.971, 2.527** is the 20% darker color. If you saturate the color by 10%, you get **71, 19.804, 4.607**, and if you desaturate by 10%, it is **83, 2.641, 2.272**.

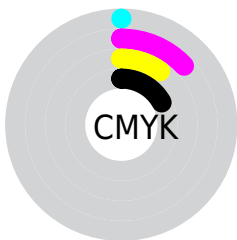
Distribution



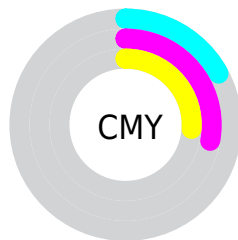
- Red (83%)
- Green (72%)
- Blue (74%)



- Red (83%)
- Yellow (72%)
- Blue (74%)



- Cyan (0%)
- Magenta (13%)
- Yellow (10%)
- Black (17%)



- Cyan (17%)
- Magenta (28%)
- Yellow (26%)

Brightness & Saturation Gradients

These gradients show how the CIELCh color 77, 11.024, 3.409 changes by changing the brightness by 10 percent. The first figure shows a shift by +10% for each color and the second figure -10%.

Similar to the brightness gradients but the following saturation gradients show a change of the CIELCh color 77, 11.024, 3.409 by changing the saturation by 10% instead.

 77, 11.024, 3.409  77, 11.024, 3.409

 100, 11.024, 3.409  67, 11.024, 3.409

 97, 11.024, 3.409  57, 11.024, 3.409

 47, 11.024, 3.409

 37, 11.024, 3.409

 27, 11.024, 3.409

 17, 11.024, 3.409

 7, 11.024, 3.409

 0, 11.024, 3.409

 77, 11.024, 3.409

 77, 11.024, 3.409

71, 19.804, 4.607

83, 2.641, 2.272

66, 28.905, 6.019

89, 5.311, 181.714

61, 38.168, 7.739

94, 12.837,
180.907

56, 47.342, 9.880

97, 14.608,
198.532

52, 56.089, 12.582

49, 64.039, 16.003

46, 70.920, 20.267

45, 76.701, 25.341

44, 80.254, 28.911

Harmonies

Complementary

The Complementary color scheme is a pair of colors which are on the opposite of each other on the color wheel.



77, 11.024, 3.409



82, 10.481, 181.025

Rectangle

The Rectangle color scheme consists of four colors that form a rectangle on the color wheel.



77, 11.024, 3.409



77, 11.024, 53.409



77, 11.024, 183.409



77, 11.024, 233.409

Sweetspot

The Sweet Spot groups the original color and five complimentary colors.



77, 11.022, 3.417



97, 3.786, 2.384



77, 17.054, 318.878



51, 2.696, 2.481



0, 0.000, 0.000



53, 0.007, 296.813

Same Dimension

The Same Dimension uses a secret algorithm to generate beautiful new colors.



77, 11.022, 3.417



89, 15.611, 3.746



79, 8.738, 48.687



41, 4.634, 2.995



35, 67.226, 27.948



4, 20.244, 9.564

Inverse Universe

The Inverse Universe completely reimagines the original color for something new.



77, 11.022, 3.417



89, 15.611, 3.746



81, 8.101, 230.507



41, 4.634, 2.995



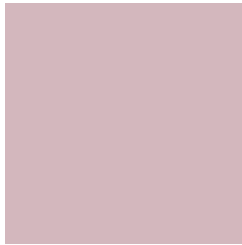
35, 67.226, 27.948



4, 20.244, 9.564

Previews

White Background



This preview shows how the CIELCh color 77, 11.024, 3.409 looks on a white background.

Color Contrast Check

Large Text (above 18pt) WCAG AA × Fail

Any Text WCAG AA × Fail

Large Text (above 18pt) WCAG AAA × Fail

Any Text WCAG AAA × Fail

Black Background



This preview shows how the CIELCh color 77, 11.024, 3.409 looks on a black background.

Color Contrast Check

Large Text (above 18pt) WCAG AA ✓ Pass

Any Text WCAG AA ✓ Pass

Large Text (above 18pt) WCAG AAA ✓ Pass

Any Text WCAG AAA ✓ Pass

If you want to check with other color combinations, try the [Color Contrast Checker](#).

CIELCh 77, 11.024, 3.409

Background



This preview shows how black text looks on a background with the CIELCh color 77, 11.024, 3.409.



This preview shows how white text looks on a background with the CIELCh color 77, 11.024, 3.409.

Color Blindness Simulation

Color vision deficiency is a very complex topic, and I could not describe the different causes any better than Wikipedia does, so if you want to learn more, you should check out their [article about color blindness](#).

Dichromacy



Original Color


77, 11.024, 3.409

Protanopia

77, 2.625, 324.459

Deuteranopia

77, 9.780, 4.338



Tritanopia
77, 13.455, 346.704

Trichromacy



Original Color
77, 11.024, 3.409

Protanomaly
77, 5.541, 350.875

Deuteranomaly
77, 10.148, 4.968

Tritanomaly
77, 12.919, 350.701

Monochromacy



Original Color
77, 11.024, 3.409

Achromatopsia
78, 0.009, 296.813

Achromatomaly
77, 3.877, 3.574

CSS Examples

Text

The CSS property to change the color of the text to CIELCh 77, 11.024, 3.409 is called "color". The color property can be set on classes, ids or directly on the HTML element.

This example shows how text in the color `rgb(211, 183, 189)` looks like.

```
.text, #text, p{  
    color:rgb(211, 183, 189)  
}
```

If you want to add a text shadow in that color use the text-shadow property, you can generate a text shadow directly with our [CSS Text Shadow Generator](#).

Here you see how black text with a 4 pixel rgb(211, 183, 189) colored shadow looks like.

```
.shadow{ text-shadow: 4px 4px 2px rgb(211, 183, 189) }
```

Border

The CSS property to change the border of an element to CIELCh 77, 11.024, 3.409 is called "border". The border property can be set on classes, ids or directly on the HTML element.

This example shows the color as border, it can be applied via the CSS property "border" or "border-color".

```
.border, #border, table{ border:4px solid rgb(211, 183, 189) }
```

If only the border color should be changed use the property `border-color`.

```
.border{ border-color:rgb(211, 183, 189) }
```

If you want to add a box shadow in that color use:

Here you see how a box with a 4 pixel `rgb(211, 183, 189)` colored shadow looks like.

```
.boxshadow{ -moz-box-shadow:4px 4px 4px  
4px rgb(211, 183, 189); -webkit-box-  
shadow:4px 4px 4px 4px rgb(211, 183, 189);  
box-shadow:4px 4px 4px 4px rgb(211, 183,  
189) }
```

Background

The CSS property to change the background color of an element to CIELCh 77, 11.024, 3.409 is called "background". The background property can be set on classes, ids or directly on the HTML element.

```
.background, #background, body{  
background: rgb(211, 183, 189) }
```

If only the background color should be changed can be used:

```
.background{ background-color: rgb(211,  
183, 189) }
```

This example shows the color as background, it is applied via the CSS property "background".

To optimize and compress your CSS code, you can use our [online CSS compressor and optimizer](#) based on csstidy. If you want to create a linear or radial gradient as background or border, check our [CSS Gradient Generator](#).

Hey! You found this booklet interesting? Support Converting Colors with the new Membership Option!

The pro membership hides all ads, plus gives you double the colors in the color bucket, and more awesome pro features!

[Learn more, Memberships starting at \\$2.50/m!](#)

**Follow me
on Twitter!**

@ConvertingColor