

Converting Colors

CIELCh(77, 11.061, 58.696)

Have a look what the booklet for
CIELCh(77, 11.061, 58.696) contains.

CIELCh(77, 11.025, 58.825)	3
<i>Conversions</i>	4
<i>Details</i>	6
<i>Harmonies</i>	11
<i>Previews</i>	20
<i>Color Blindness Simulation</i>	23
<i>CSS Examples</i>	26

Color

CIELCh(77, 11.025, 58.825)

Conversions

Conversions Part 1

Format	Color
Hex	D0BAAD
RGB	208, 186, 173
RGB Percent	82%, 73%, 68%
CMY	0.1844, 0.2707, 0.3216
CMYK	0.00, 0.11, 0.17, 0.18
HSL	22°, 27%, 75%
HSV	22°, 17%, 82%
XYZ	51.1013, 51.5317, 46.7779
YIQ	191.0960, 17.2850, 0.6210

Conversions

Conversions Part 2

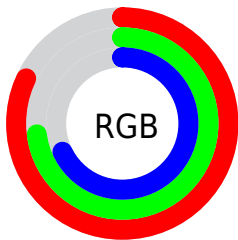
Format	Color
R _Y B	208, 194, 173
Decimal	13679277
CIE Lab	77.00, 5.71, 9.43
CIE LCh	77, 11.025, 58.825
Yxy	51.5317, 0.3420, 0.3449
Android (android.graphics.Color)	4291869357 (0xFFD0BAAD)
YUV	191.0960, -8.9213, 14.8248
Hunter-Lab	71.7856, 1.4421, 11.6146

Details

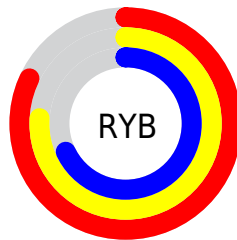
The CIELCh color **77, 11.025, 58.825** is a light color, and the websafe version is hex **CCCCCC**. A complement of this color would be **78, 10.192, 242.334**, and the grayscale version is **77, 0.009, 296.813**.

A 20% lighter version of the original color is **96, 8.555, 76.027**, and **57, 10.806, 58.923** is the 20% darker color. If you saturate the color by 10%, you get **73, 18.187, 57.978**, and if you desaturate by 10%, it is **81, 4.325, 59.683**.

Distribution



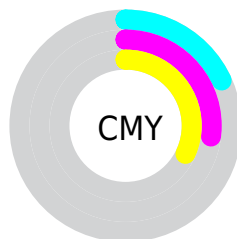
- Red (82%)
- Green (73%)
- Blue (68%)



- Red (82%)
- Yellow (76%)
- Blue (68%)



- Cyan (0%)
- Magenta (11%)
- Yellow (17%)
- Black (18%)



- Cyan (18%)
- Magenta (27%)
- Yellow (32%)

Brightness & Saturation Gradients

These gradients show how the CIELCh color 77, 11.025, 58.825 changes by changing the brightness by 10 percent. The first figure shows a shift by +10% for each color and the second figure -10%.

Similar to the brightness gradients but the following saturation gradients show a change of the CIELCh color 77, 11.025, 58.825 by changing the saturation by 10% instead.

■ 77, 11.025, 58.825

■ 77, 11.025, 58.825

■ 100, 11.025,
58.825

■ 67, 11.025, 58.825

■ 97, 11.025, 58.825

■ 57, 11.025, 58.825

■ 47, 11.025, 58.825

■ 37, 11.025, 58.825

■ 27, 11.025, 58.825

■ 17, 11.025, 58.825

■ 7, 11.025, 58.825

■ 0, 11.025, 58.825

■ 77, 11.025, 58.825

■ 77, 11.025, 58.825

73, 18.187, 57.978

81, 4.325, 59.683

70, 25.849, 57.157

85, 1.956, 240.967

66, 34.024, 56.393

89, 7.863, 241.720

63, 42.687, 55.688

93, 13.064,
240.541

59, 51.722, 55.016

96, 14.482,
206.044

56, 60.830, 54.284

54, 69.358, 53.264

97, 15.634,
198.466

51, 76.176, 51.542

50, 78.173, 51.025

Harmonies

Complementary

The Complementary color scheme is a pair of colors which are on the opposite of each other on the color wheel.



77, 11.025, 58.825



78, 10.192, 242.334

Rectangle

The Rectangle color scheme consists of four colors that form a rectangle on the color wheel.



77, 11.025, 58.825



77, 11.025, 108.825



77, 11.025, 238.825



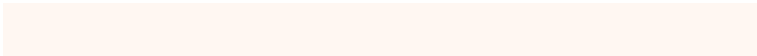
77, 11.025, 288.825

Sweetspot

The Sweet Spot groups the original color and five complimentary colors.



77, 11.025, 58.838



98, 3.714, 59.807



74, 17.658, 338.352



52, 2.540, 59.760



0, 0.000, 0.000



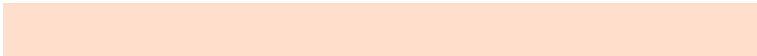
53, 0.007, 296.813

Same Dimension

The Same Dimension uses a secret algorithm to generate beautiful new colors.



77, 11.025, 58.838



91, 15.640, 58.542



81, 16.092, 102.308



42, 3.642, 59.476



41, 66.437, 51.592



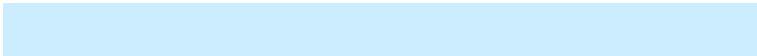
7, 16.262, 43.708

Inverse Universe

The Inverse Universe completely reimagines the original color for something new.



78, 10.192, 242.334



92, 14.203, 242.789



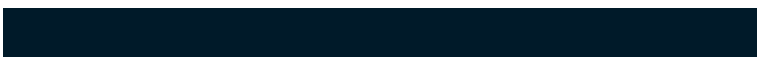
73, 16.524, 286.163



42, 3.495, 241.469



43, 40.585, 267.837



8, 13.634, 256.133

Previews

White Background



This preview shows how the CIELCh color 77, 11.025, 58.825 looks on a white background.

Color Contrast Check

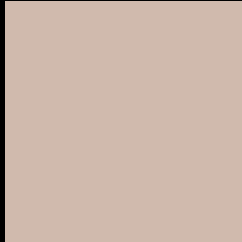
Large Text (above 18pt) WCAG AA × Fail

Any Text WCAG AA × Fail

Large Text (above 18pt) WCAG AAA × Fail

Any Text WCAG AAA × Fail

Black Background



This preview shows how the CIELCh color 77, 11.025, 58.825 looks on a black background.

Color Contrast Check

Large Text (above 18pt) WCAG AA ✓ Pass

Any Text WCAG AA ✓ Pass

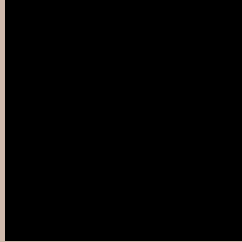
Large Text (above 18pt) WCAG AAA ✓ Pass

Any Text WCAG AAA ✓ Pass

If you want to check with other color combinations, try the [Color Contrast Checker](#).

CIELCh 77, 11.025, 58.825

Background



This preview shows how black text looks on a background with the CIELCh color 77, 11.025, 58.825.



This preview shows how white text looks on a background with the CIELCh color 77, 11.025, 58.825.

Color Blindness Simulation

Color vision deficiency is a very complex topic, and I could not describe the different causes any better than Wikipedia does, so if you want to learn more, you should check out their [article about color blindness](#).

Dichromacy



Original Color

77, 11.025, 58.825

Protanopia

77, 8.441, 90.920

Deuteranopia

77, 13.611, 43.299



Tritanopia
77, 13.447, 343.856

Trichromacy



Original Color
77, 11.025, 58.825

Protanomaly
77, 9.245, 79.458

Deuteranomaly
77, 12.412, 48.296

Tritanomaly
77, 10.528, 5.562

Monochromacy



Original Color
77, 11.025, 58.825

Achromatopsia
77, 0.009, 296.813

Achromatomaly
77, 4.007, 61.278

CSS Examples

Text

The CSS property to change the color of the text to CIELCh 77, 11.025, 58.825 is called "color". The color property can be set on classes, ids or directly on the HTML element.

This example shows how text in the color `rgb(208, 186, 173)` looks like.

```
.text, #text, p{  
    color:rgb(208, 186, 173)  
}
```

If you want to add a text shadow in that color use the text-shadow property, you can generate a text shadow directly with our [CSS Text Shadow Generator](#).

Here you see how black text with a 4 pixel rgb(208, 186, 173) colored shadow looks like.

```
.shadow{ text-shadow: 4px 4px 2px rgb(208, 186, 173) }
```

Border

The CSS property to change the border of an element to CIELCh 77, 11.025, 58.825 is called "border". The border property can be set on classes, ids or directly on the HTML element.

This example shows the color as border, it can be applied via the CSS property "border" or "border-color".

```
.border, #border, table{ border:4px solid rgb(208, 186, 173) }
```

If only the border color should be changed use the property `border-color`.

```
.border{ border-color:rgb(208, 186, 173) }
```

If you want to add a box shadow in that color use:

Here you see how a box with a 4 pixel `rgb(208, 186, 173)` colored shadow looks like.

```
.boxshadow{ -moz-box-shadow:4px 4px 4px  
4px rgb(208, 186, 173); -webkit-box-  
shadow:4px 4px 4px 4px rgb(208, 186, 173);  
box-shadow:4px 4px 4px 4px rgb(208, 186,  
173) }
```

Background

The CSS property to change the background color of an element to CIELCh 77, 11.025, 58.825 is called "background". The background property can be set on classes, ids or directly on the HTML element.

```
.background, #background, body{  
background: rgb(208, 186, 173) }
```

If only the background color should be changed can be used:

```
.background{ background-color: rgb(208,  
186, 173) }
```

This example shows the color as background, it is applied via the CSS property "background".

To optimize and compress your CSS code, you can use our [online CSS compressor and optimizer](#) based on csstidy. If you want to create a linear or radial gradient as background or border, check our [CSS Gradient Generator](#).

Hey! You found this booklet interesting? Support Converting Colors with the new Membership Option!

The pro membership hides all ads, plus gives you double the colors in the color bucket, and more awesome pro features!

[Learn more, Memberships starting at \\$2.50/m!](#)

**Follow me
on Twitter!**

@ConvertingColor