

Converting Colors

CIELCh(77, 11.317, 20.299)

Have a look what the booklet for
CIELCh(77, 11.317, 20.299) contains.

CIELCh(77, 11.448, 20.306)	3
<i>Conversions</i>	4
<i>Details</i>	6
<i>Harmonies</i>	11
<i>Previews</i>	20
<i>Color Blindness Simulation</i>	23
<i>CSS Examples</i>	26

Color

CIELCh(77, 11.448, 20.306)

Conversions

Conversions Part 1

Format	Color
Hex	D5B7B7
RGB	213, 183, 183
RGB Percent	84%, 72%, 72%
CMY	0.1640, 0.2817, 0.2817
CMYK	0.00, 0.14, 0.14, 0.16
HSL	0°, 26%, 78%
HSV	0°, 14%, 84%
XYZ	53.0213, 51.5317, 52.0412
YIQ	191.9700, 17.8800, 6.3600

Conversions

Conversions Part 2

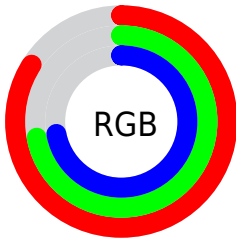
Format	Color
R _Y B	213, 183, 183
Decimal	14006199
CIE Lab	77.00, 10.74, 3.97
CIE LCh	77, 11.448, 20.306
Yxy	51.5317, 0.3386, 0.3291
Android (android.graphics.Color)	4292196279 (0xFFD5B7B7)
YUV	191.9700, -4.4222, 18.4433
Hunter-Lab	71.7856, 6.2163, 7.2675

Details

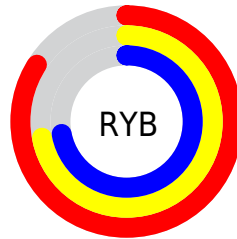
The CIELCh color $77, 11.448, 20.306$ is a light color, and the websafe version is hex `FFCCCC`. A complement of this color would be $83, 10.459, 198.718$, and the grayscale version is $78, 0.009, 296.813$.

A 20% lighter version of the original color is $96, 5.724, 19.680$, and $57, 11.440, 20.588$ is the 20% darker color. If you saturate the color by 10%, you get $71, 20.357, 21.249$, and if you desaturate by 10%, it is $83, 3.187, 19.481$.

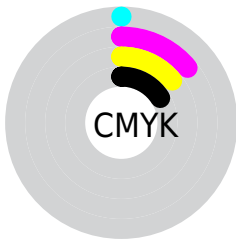
Distribution



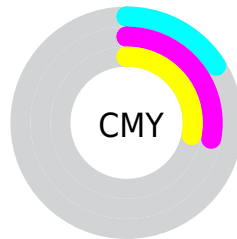
- Red (84%)
- Green (72%)
- Blue (72%)



- Red (84%)
- Yellow (72%)
- Blue (72%)



- Cyan (0%)
- Magenta (14%)
- Yellow (14%)
- Black (16%)



- Cyan (16%)
- Magenta (28%)
- Yellow (28%)

Brightness & Saturation Gradients

These gradients show how the CIELCh color 77, 11.448, 20.306 changes by changing the brightness by 10 percent. The first figure shows a shift by +10% for each color and the second figure -10%.

Similar to the brightness gradients but the following saturation gradients show a change of the CIELCh color 77, 11.448, 20.306 by changing the saturation by 10% instead.

■ 77, 11.448, 20.306

■ 77, 11.448, 20.306

■ 100, 11.448,
20.306

■ 67, 11.448, 20.306

■ 97, 11.448, 20.306

■ 57, 11.448, 20.306

■ 47, 11.448, 20.306

■ 37, 11.448, 20.306

■ 27, 11.448, 20.306

■ 17, 11.448, 20.306

■ 7, 11.448, 20.306

■ 0, 11.448, 20.306

■ 77, 11.448, 20.306

■ 77, 11.448, 20.306

71, 20.357, 21.249

83, 3.187, 19.481

66, 29.907, 22.446

89, 4.450, 199.243

61, 40.014, 24.008

95, 11.514,
198.730

56, 50.506, 26.044

97, 13.996,
198.572

52, 61.108, 28.657

49, 71.434, 31.869

46, 80.886, 35.446

45, 88.199, 38.581

44, 91.350, 40.001

Harmonies

Complementary

The Complementary color scheme is a pair of colors which are on the opposite of each other on the color wheel.



77, 11.448, 20.306



83, 10.459, 198.718

Rectangle

The Rectangle color scheme consists of four colors that form a rectangle on the color wheel.



77, 11.448, 20.306



77, 11.448, 70.306



77, 11.448, 200.306



77, 11.448, 250.306

Sweetspot

The Sweet Spot groups the original color and five complimentary colors.



77, 11.446, 20.316



97, 3.616, 19.477



78, 19.431, 325.199



51, 2.578, 19.554



0, 0.000, 0.000



53, 0.007, 296.813

Same Dimension

The Same Dimension uses a secret algorithm to generate beautiful new colors.



77, 11.446, 20.316



88, 16.184, 20.583



81, 9.791, 73.661



42, 4.549, 19.940



35, 77.347, 39.900



5, 21.998, 19.773

Inverse Universe

The Inverse Universe completely reimagines the original color for something new.



83, 10.459, 198.718



97, 14.476, 198.553



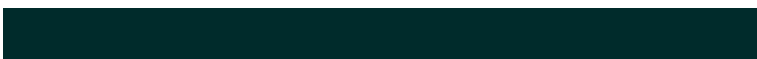
79, 9.450, 257.365



44, 4.287, 198.985



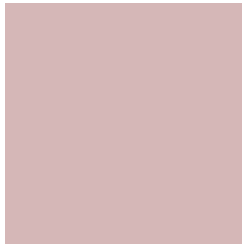
63, 37.115, 196.407



15, 14.556, 196.403

Previews

White Background



This preview shows how the CIELCh color 77, 11.448, 20.306 looks on a white background.

Color Contrast Check

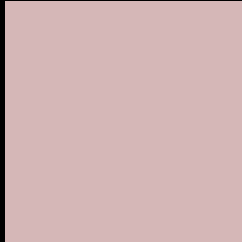
Large Text (above 18pt) WCAG AA × Fail

Any Text WCAG AA × Fail

Large Text (above 18pt) WCAG AAA × Fail

Any Text WCAG AAA × Fail

Black Background



This preview shows how the CIELCh color 77, 11.448, 20.306 looks on a black background.

Color Contrast Check

Large Text (above 18pt) WCAG AA ✓ Pass

Any Text WCAG AA ✓ Pass

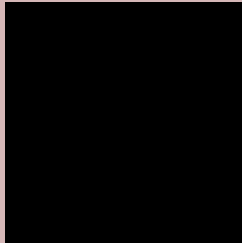
Large Text (above 18pt) WCAG AAA ✓ Pass

Any Text WCAG AAA ✓ Pass

If you want to check with other color combinations, try the [Color Contrast Checker](#).

CIELCh 77, 11.448, 20.306

Background



This preview shows how black text looks on a background with the CIELCh color 77, 11.448, 20.306.



This preview shows how white text looks on a background with the CIELCh color 77, 11.448, 20.306.

Color Blindness Simulation

Color vision deficiency is a very complex topic, and I could not describe the different causes any better than Wikipedia does, so if you want to learn more, you should check out their [article about color blindness](#).

Dichromacy



Original Color

77, 11.448, 20.306

Protanopia

77, 2.136, 49.342

Deuteranopia

77, 10.304, 23.156



Tritanopia
77, 14.739, 350.145

Trichromacy



Original Color
77, 11.448, 20.306

Protanomaly
77, 5.285, 25.527

Deuteranomaly
77, 10.693, 23.081

Tritanomaly
77, 12.955, 358.718

Monochromacy



Original Color
77, 11.448, 20.306

Achromatopsia
78, 0.009, 296.813

Achromatomaly
77, 4.106, 19.606

CSS Examples

Text

The CSS property to change the color of the text to CIELCh 77, 11.448, 20.306 is called "color". The color property can be set on classes, ids or directly on the HTML element.

This example shows how text in the color `rgb(213, 183, 183)` looks like.

```
.text, #text, p{  
    color:rgb(213, 183, 183)  
}
```

If you want to add a text shadow in that color use the text-shadow property, you can generate a text shadow directly with our [CSS Text Shadow Generator](#).

Here you see how black text with a 4 pixel rgb(213, 183, 183) colored shadow looks like.

```
.shadow{ text-shadow: 4px 4px 2px rgb(213, 183, 183) }
```

Border

The CSS property to change the border of an element to CIELCh 77, 11.448, 20.306 is called "border". The border property can be set on classes, ids or directly on the HTML element.

This example shows the color as border, it can be applied via the CSS property "border" or "border-color".

```
.border, #border, table{ border:4px solid rgb(213, 183, 183) }
```

If only the border color should be changed use the property `border-color`.

```
.border{ border-color:rgb(213, 183, 183) }
```

If you want to add a box shadow in that color use:

Here you see how a box with a 4 pixel `rgb(213, 183, 183)` colored shadow looks like.

```
.boxshadow{ -moz-box-shadow:4px 4px 4px  
4px rgb(213, 183, 183); -webkit-box-  
shadow:4px 4px 4px 4px rgb(213, 183, 183);  
box-shadow:4px 4px 4px 4px rgb(213, 183,  
183) }
```

Background

The CSS property to change the background color of an element to CIELCh 77, 11.448, 20.306 is called "background". The background property can be set on classes, ids or directly on the HTML element.

```
.background, #background, body{  
background: rgb(213, 183, 183) }
```

If only the background color should be changed can be used:

```
.background{ background-color: rgb(213,  
183, 183) }
```

This example shows the color as background, it is applied via the CSS property "background".

To optimize and compress your CSS code, you can use our [online CSS compressor and optimizer](#) based on csstidy. If you want to create a linear or radial gradient as background or border, check our [CSS Gradient Generator](#).

Hey! You found this booklet interesting? Support Converting Colors with the new Membership Option!

The pro membership hides all ads, plus gives you double the colors in the color bucket, and more awesome pro features!

[Learn more, Memberships starting at \\$2.50/m!](#)

**Follow me
on Twitter!**

@ConvertingColor