

Converting Colors

CIELCh(77, 11.387, 15.477)

Have a look what the booklet for
CIELCh(77, 11.387, 15.477) contains.

CIELCh(77, 11.451, 14.982)	3
<i>Conversions</i>	4
<i>Details</i>	6
<i>Harmonies</i>	11
<i>Previews</i>	20
<i>Color Blindness Simulation</i>	23
<i>CSS Examples</i>	26

Color

CIELCh(77, 11.451, 14.982)

Conversions

Conversions Part 1

Format	Color
Hex	D5B7B9
RGB	213, 183, 185
RGB Percent	84%, 72%, 73%
CMY	0.1646, 0.2822, 0.2744
CMYK	0.00, 0.14, 0.13, 0.16
HSL	356°, 26%, 78%
HSV	356°, 14%, 84%
XYZ	53.1470, 51.5317, 53.0587
YIQ	192.1980, 17.2380, 6.9820

Conversions

Conversions Part 2

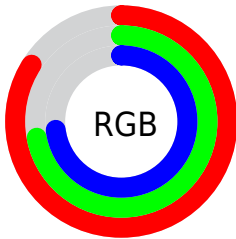
Format	Color
R _Y B	213, 183, 185
Decimal	14006201
CIE Lab	77.00, 11.06, 2.96
CIE LCh	77, 11.451, 14.982
Yxy	51.5317, 0.3369, 0.3267
Android (android.graphics.Color)	4292196281 (0xFFD5B7B9)
YUV	192.1980, -3.5486, 18.2434
Hunter-Lab	71.7856, 6.5290, 6.4271

Details

The CIELCh color **77, 11.451, 14.982** is a light color, and the websafe version is hex **FFCCCC**. A complement of this color would be **83, 10.579, 192.947**, and the grayscale version is **78, 0.009, 296.813**.

A 20% lighter version of the original color is **96, 5.806, 9.558**, and **57, 11.429, 14.933** is the 20% darker color. If you saturate the color by 10%, you get **71, 20.263, 16.066**, and if you desaturate by 10%, it is **83, 3.205, 14.014**.

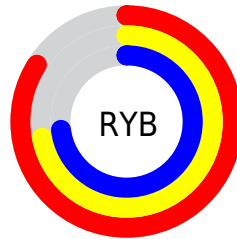
Distribution



Red (84%)

Green (72%)

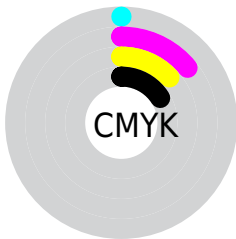
Blue (73%)



Red (84%)

Yellow (72%)

Blue (73%)

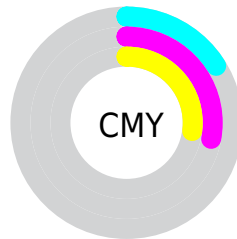


Cyan (0%)

Magenta (14%)

Yellow (13%)

Black (16%)



Cyan (16%)

Magenta (28%)

Yellow (27%)

Brightness & Saturation Gradients

These gradients show how the CIELCh color 77, 11.451, 14.982 changes by changing the brightness by 10 percent. The first figure shows a shift by +10% for each color and the second figure -10%.

Similar to the brightness gradients but the following saturation gradients show a change of the CIELCh color 77, 11.451, 14.982 by changing the saturation by 10% instead.

■ 77, 11.451, 14.982

■ 77, 11.451, 14.982

■ 100, 11.451,
14.982

■ 67, 11.451, 14.982

■ 97, 11.451, 14.982

■ 57, 11.451, 14.982

■ 47, 11.451, 14.982

■ 37, 11.451, 14.982

■ 27, 11.451, 14.982

■ 17, 11.451, 14.982

■ 7, 11.451, 14.982

■ 0, 11.451, 14.982

■ 77, 11.451, 14.982

■ 77, 11.451, 14.982

71, 20.263, 16.066

83, 3.205, 14.014

66, 29.608, 17.399

89, 4.480, 193.622

61, 39.380, 19.090

95, 11.638,
192.964

56, 49.381, 21.257

97, 14.041,
198.569

52, 59.327, 24.023

49, 68.877, 27.474

46, 77.662, 31.534

45, 85.125, 35.735

44, 88.604, 37.738

Harmonies

Complementary

The Complementary color scheme is a pair of colors which are on the opposite of each other on the color wheel.



77, 11.451, 14.982



83, 10.579, 192.947

Rectangle

The Rectangle color scheme consists of four colors that form a rectangle on the color wheel.



77, 11.451, 14.982



77, 11.451, 64.982



77, 11.451, 194.982



77, 11.451, 244.982

Sweetspot

The Sweet Spot groups the original color and five complimentary colors.



77, 11.449, 14.991



97, 3.634, 14.009



78, 19.043, 323.340



51, 2.589, 14.096



0, 0.000, 0.000



53, 0.007, 296.813

Same Dimension

The Same Dimension uses a secret algorithm to generate beautiful new colors.



77, 11.449, 14.991



88, 16.167, 15.302



80, 9.468, 66.275



42, 4.560, 14.548



35, 74.635, 37.166



5, 21.965, 16.799

Inverse Universe

The Inverse Universe completely reimagines the original color for something new.



77, 11.449, 14.991



88, 16.167, 15.302



80, 8.999, 249.679



42, 4.560, 14.548



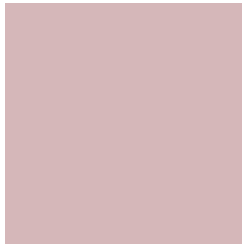
35, 74.635, 37.166



5, 21.965, 16.799

Previews

White Background



This preview shows how the CIELCh color 77, 11.451, 14.982 looks on a white background.

Color Contrast Check

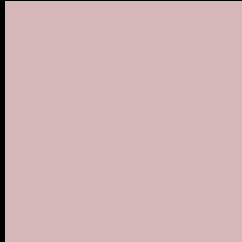
Large Text (above 18pt) WCAG AA × Fail

Any Text WCAG AA × Fail

Large Text (above 18pt) WCAG AAA × Fail

Any Text WCAG AAA × Fail

Black Background



This preview shows how the CIE LCh color 77, 11.451, 14.982 looks on a black background.

Color Contrast Check

Large Text (above 18pt) WCAG AA ✓ Pass

Any Text WCAG AA ✓ Pass

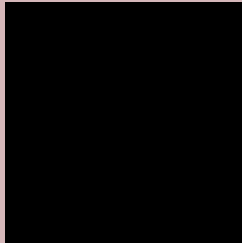
Large Text (above 18pt) WCAG AAA ✓ Pass

Any Text WCAG AAA ✓ Pass

If you want to check with other color combinations, try the [Color Contrast Checker](#).

CIELCh 77, 11.451, 14.982

Background



This preview shows how black text looks on a background with the CIELCh color 77, 11.451, 14.982.



This preview shows how white text looks on a background with the CIELCh color 77, 11.451, 14.982.

Color Blindness Simulation

Color vision deficiency is a very complex topic, and I could not describe the different causes any better than Wikipedia does, so if you want to learn more, you should check out their [article about color blindness](#).

Dichromacy



Original Color


77, 11.451, 14.982

Protanopia

77, 1.856, 19.269

Deuteranopia

77, 10.262, 17.229



Tritanopia
77, 14.685, 347.533

Trichromacy



Original Color
77, 11.451, 14.982

Protanomaly
77, 5.272, 13.918

Deuteranomaly
77, 10.649, 17.373

Tritanomaly
77, 13.144, 356.535

Monochromacy



Original Color
77, 11.451, 14.982

Achromatopsia
78, 0.009, 296.813

Achromatomaly
77, 4.106, 19.606

CSS Examples

Text

The CSS property to change the color of the text to CIELCh 77, 11.451, 14.982 is called "color". The color property can be set on classes, ids or directly on the HTML element.

This example shows how text in the color `rgb(213, 183, 185)` looks like.

```
.text, #text, p{  
    color:rgb(213, 183, 185)  
}
```

If you want to add a text shadow in that color use the text-shadow property, you can generate a text shadow directly with our [CSS Text Shadow Generator](#).

Here you see how black text with a 4 pixel rgb(213, 183, 185) colored shadow looks like.

```
.shadow{ text-shadow: 4px 4px 2px rgb(213, 183, 185) }
```

Border

The CSS property to change the border of an element to CIELCh 77, 11.451, 14.982 is called "border". The border property can be set on classes, ids or directly on the HTML element.

This example shows the color as border, it can be applied via the CSS property "border" or "border-color".

```
.border, #border, table{ border:4px solid rgb(213, 183, 185) }
```

If only the border color should be changed use the property `border-color`.

```
.border{ border-color:rgb(213, 183, 185) }
```

If you want to add a box shadow in that color use:

Here you see how a box with a 4 pixel `rgb(213, 183, 185)` colored shadow looks like.

```
.boxshadow{ -moz-box-shadow:4px 4px 4px 4px rgb(213, 183, 185); -webkit-box-shadow:4px 4px 4px 4px rgb(213, 183, 185); box-shadow:4px 4px 4px 4px rgb(213, 183, 185) }
```

Background

The CSS property to change the background color of an element to CIELCh 77, 11.451, 14.982 is called "background". The background property can be set on classes, ids or directly on the HTML element.

```
.background, #background, body{  
background: rgb(213, 183, 185) }
```

If only the background color should be changed can be used:

```
.background{ background-color: rgb(213,  
183, 185) }
```

This example shows the color as background, it is applied via the CSS property "background".

To optimize and compress your CSS code, you can use our [online CSS compressor and optimizer](#) based on csstidy. If you want to create a linear or radial gradient as background or border, check our [CSS Gradient Generator](#).

Hey! You found this booklet interesting? Support Converting Colors with the new Membership Option!

The pro membership hides all ads, plus gives you double the colors in the color bucket, and more awesome pro features!

[Learn more, Memberships starting at \\$2.50/m!](#)

**Follow me
on Twitter!**

@ConvertingColor