

Converting Colors

CIELCh(77, 11.501, 344.623)

Have a look what the booklet for
CIELCh(77, 11.501, 344.623)
contains.

CIELCh(77, 11.923, 344.670)	3
<i>Conversions</i>	4
<i>Details</i>	6
<i>Harmonies</i>	12
<i>Previews</i>	21
<i>Color Blindness Simulation</i>	24
<i>CSS Examples</i>	27

Color

CIELCh(77, 11.923, 344.670)

Conversions

Conversions Part 1

Format	Color
Hex	D1B7C4
RGB	209, 183, 196
RGB Percent	82%, 72%, 77%
CMY	0.1796, 0.2815, 0.2306
CMYK	0.00, 0.12, 0.06, 0.18
HSL	330°, 22%, 77%
HSV	330°, 12%, 82%
XYZ	53.3164, 51.5317, 59.4839
YIQ	192.2560, 11.3230, 9.5550

Conversions

Conversions Part 2

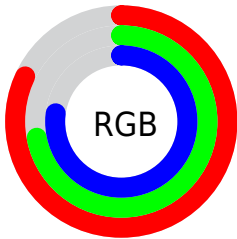
Format	Color
R _Y B	209, 183, 196
Decimal	13744068
CIE Lab	77.00, 11.50, -3.15
CIE LCh	77, 11.923, 344.670
Yxy	51.5317, 0.3244, 0.3136
Android (android.graphics.Color)	4291934148 (0xFFD1B7C4)
YUV	192.2560, 1.8458, 14.6845
Hunter-Lab	71.7856, 6.9501, 1.1203

Details

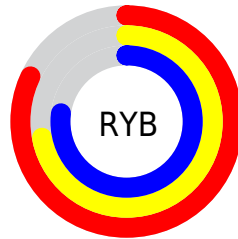
The CIELCh color **77, 11.923, 344.670** is a light color, and the websafe version is hex **CCCCCC**. A complement of this color would be **82, 11.731, 162.638**, and the grayscale version is **78, 0.009, 296.813**.

A 20% lighter version of the original color is **96, 9.153, 328.376**, and **57, 11.683, 344.932** is the 20% darker color. If you saturate the color by 10%, you get **72, 21.720, 345.641**, and if you desaturate by 10%, it is **83, 2.304, 343.671**.

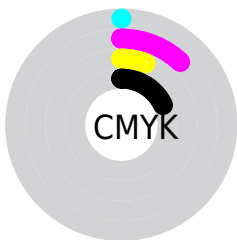
Distribution



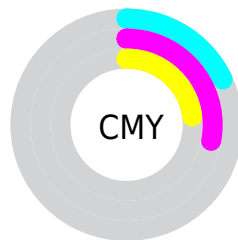
- Red (82%)
- Green (72%)
- Blue (77%)



- Red (82%)
- Yellow (72%)
- Blue (77%)



- Cyan (0%)
- Magenta (12%)
- Yellow (6%)
- Black (18%)





- Cyan (18%)
- Magenta (28%)
- Yellow (23%)


Brightness & Saturation Gradients


These gradients show how the CIELCh color 77, 11.923, 344.670 changes by changing the brightness by 10 percent. The first figure shows a shift by +10% for each color and the second figure -10%.


Similar to the brightness gradients but the following saturation gradients show a change of the CIELCh color 77, 11.923, 344.670 by changing the saturation by 10% instead.


 77, 11.923,
344.670

 77, 11.923,
344.670


 100, 11.923,
344.670


 67, 11.923,
344.670


 97, 11.923,
344.670

 57, 11.923,
344.670

 47, 11.923,
344.670

 37, 11.923,
344.670

 27, 11.923,
344.670

 17, 11.923,
344.670

 7, 11.923, 344.670

0, 11.923, 344.670

77, 11.923,
344.670

77, 11.923,
344.670

72, 21.720,
345.641

83, 2.304, 343.671

66, 31.553,
346.718

88, 7.045, 163.135

62, 41.180,
347.951

94, 16.085,
162.389

57, 50.256,
349.395

97, 18.097,
169.621

53, 58.331,
351.131

97, 15.859,
186.320

50, 64.901,
353.273

97, 15.248,
198.491

■ 47, 69.530,
355.966

■ 46, 72.048,
359.375

■ 45, 72.950, 2.404

Harmonies

Complementary

The Complementary color scheme is a pair of colors which are on the opposite of each other on the color wheel.



77, 11.923, 344.670



82, 11.731, 162.638

Rectangle

The Rectangle color scheme consists of four colors that form a rectangle on the color wheel.



77, 11.923, 344.670



77, 11.923, 34.670



77, 11.923, 164.670



77, 11.923, 214.670

Sweetspot

The Sweet Spot groups the original color and five complimentary colors.



77, 11.921, 344.674



97, 4.461, 343.877



76, 14.823, 309.623



52, 3.173, 343.957



0, 0.000, 0.000



53, 0.007, 296.813

Same Dimension

The Same Dimension uses a secret algorithm to generate beautiful new colors.



77, 11.921, 344.674



90, 16.945, 344.931



77, 9.890, 20.168



41, 5.421, 344.395



36, 62.117, 1.683



5, 21.811, 353.950

Inverse Universe

The Inverse Universe completely reimagines the original color for something new.



77, 11.921, 344.674



90, 16.945, 344.931



82, 9.138, 198.798



41, 5.421, 344.395



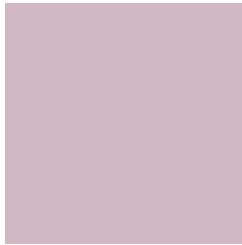
36, 62.117, 1.683



5, 21.811, 353.950

Previews

White Background



This preview shows how the CIELCh color 77, 11.923, 344.670 looks on a white background.

Color Contrast Check

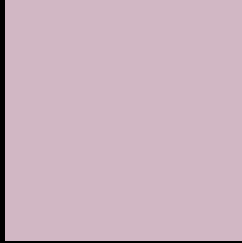
Large Text (above 18pt) WCAG AA × Fail

Any Text WCAG AA × Fail

Large Text (above 18pt) WCAG AAA × Fail

Any Text WCAG AAA × Fail

Black Background



This preview shows how the CIELCh color 77, 11.923, 344.670 looks on a black background.

Color Contrast Check

Large Text (above 18pt) WCAG AA ✓ Pass

Any Text WCAG AA ✓ Pass

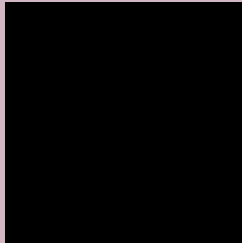
Large Text (above 18pt) WCAG AAA ✓ Pass

Any Text WCAG AAA ✓ Pass

If you want to check with other color combinations, try the [Color Contrast Checker](#).

CIELCh 77, 11.923, 344.670

Background



This preview shows how black text looks on a background with the CIELCh color 77, 11.923, 344.670.



This preview shows how white text looks on a background with the CIELCh color 77, 11.923, 344.670.

Color Blindness Simulation

Color vision deficiency is a very complex topic, and I could not describe the different causes any better than Wikipedia does, so if you want to learn more, you should check out their [article about color blindness](#).

Dichromacy



Original Color
77, 11.923, 344.670

Protanopia
77, 5.969, 297.683

Deuteranopia
77, 10.410, 342.099



Tritanopia
77, 12.234, 342.617

Trichromacy



Original Color
77, 11.923, 344.670

Protanomaly
77, 7.637, 322.446

Deuteranomaly
77, 10.705, 343.375

Tritanomaly
77, 12.234, 342.617

Monochromacy



Original Color
77, 11.923, 344.670

Achromatopsia
78, 0.009, 296.813

Achromatomaly
77, 4.293, 341.037

CSS Examples

Text

The CSS property to change the color of the text to CIELCh 77, 11.923, 344.670 is called "color". The color property can be set on classes, ids or directly on the HTML element.

This example shows how text in the color `rgb(209, 183, 196)` looks like.

```
.text, #text, p{  
    color:rgb(209, 183, 196)  
}
```

If you want to add a text shadow in that color use the text-shadow property, you can generate a text shadow directly with our [CSS Text Shadow Generator](#).

Here you see how black text with a 4 pixel rgb(209, 183, 196) colored shadow looks like.

```
.shadow{ text-shadow: 4px 4px 2px rgb(209, 183, 196) }
```

Border

The CSS property to change the border of an element to CIELCh 77, 11.923, 344.670 is called "border". The border property can be set on classes, ids or directly on the HTML element.

This example shows the color as border, it can be applied via the CSS property "border" or "border-color".

```
.border, #border, table{ border:4px solid rgb(209, 183, 196) }
```

If only the border color should be changed use the property `border-color`.

```
.border{ border-color:rgb(209, 183, 196) }
```

If you want to add a box shadow in that color use:

Here you see how a box with a 4 pixel `rgb(209, 183, 196)` colored shadow looks like.

```
.boxshadow{ -moz-box-shadow:4px 4px 4px  
4px rgb(209, 183, 196); -webkit-box-  
shadow:4px 4px 4px 4px rgb(209, 183, 196);  
box-shadow:4px 4px 4px 4px rgb(209, 183,  
196) }
```

Background

The CSS property to change the background color of an element to CIELCh 77, 11.923, 344.670 is called "background". The background property can be set on classes, ids or directly on the HTML element.

```
.background, #background, body{  
background: rgb(209, 183, 196) }
```

If only the background color should be changed can be used:

```
.background{ background-color: rgb(209,  
183, 196) }
```

This example shows the color as background, it is applied via the CSS property "background".

To optimize and compress your CSS code, you can use our [online CSS compressor and optimizer](#) based on csstidy. If you want to create a linear or radial gradient as background or border, check our [CSS Gradient Generator](#).

Hey! You found this booklet interesting? Support Converting Colors with the new Membership Option!

The pro membership hides all ads, plus gives you double the colors in the color bucket, and more awesome pro features!

[Learn more, Memberships starting at \\$2.50/m!](#)

**Follow me
on Twitter!**

@ConvertingColor