

Converting Colors

CIELCh(77, 12.691, 76.617)

Have a look what the booklet for
CIELCh(77, 12.691, 76.617) contains.

CIELCh(77, 12.375, 74.604)	3
<i>Conversions</i>	4
<i>Details</i>	6
<i>Harmonies</i>	11
<i>Previews</i>	20
<i>Color Blindness Simulation</i>	23
<i>CSS Examples</i>	26

Color

CIELCh(77, 12.375, 74.604)

Conversions

Conversions Part 1

Format	Color
Hex	CDBBA8
RGB	205, 187, 168
RGB Percent	80%, 73%, 66%
CMY	0.1949, 0.2655, 0.3400
CMYK	0.00, 0.09, 0.18, 0.19
HSL	31°, 27%, 73%
HSV	31°, 18%, 81%
XYZ	50.1936, 51.5317, 44.4932
YIQ	190.2160, 16.8270, -2.0930

Conversions

Conversions Part 2

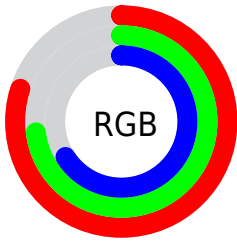
Format	Color
RYB	203, 205, 168
Decimal	13482920
CIELab	77.00, 3.29, 11.93
CIELCh	77, 12.375, 74.604
Yxy	51.5317, 0.3433, 0.3524
Android (android.graphics.Color)	4291673000 (0xFFCDBBA8)
YUV	190.2160, -10.9525, 12.9656
Hunter-Lab	71.7856, -0.8150, 13.5016

Details

The CIELCh color `77, 12.375, 74.604` is a light color, and the websafe version is hex `CCCCCC`. A complement of this color would be `75, 11.858, 259.450`, and the grayscale version is `77, 0.009, 296.813`.

A 20% lighter version of the original color is `96, 11.099, 86.015`, and `57, 12.279, 75.724` is the 20% darker color. If you saturate the color by 10%, you get `74, 19.679, 73.355`, and if you desaturate by 10%, it is `80, 5.388, 75.828`.

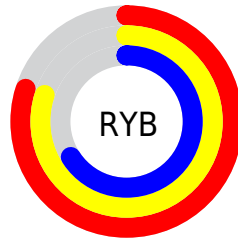
Distribution



Red (80%)

Green (73%)

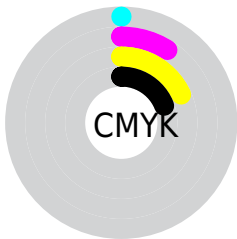
Blue (66%)



Red (80%)

Yellow (80%)

Blue (66%)

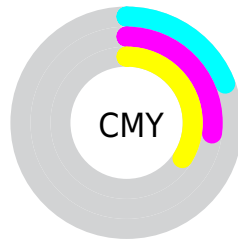


Cyan (0%)

Magenta (9%)

Yellow (18%)

Black (19%)



Cyan (19%)

Magenta (27%)

Yellow (34%)

Brightness & Saturation Gradients

These gradients show how the CIELCh color 77, 12.375, 74.604 changes by changing the brightness by 10 percent. The first figure shows a shift by +10% for each color and the second figure -10%.

Similar to the brightness gradients but the following saturation gradients show a change of the CIELCh color 77, 12.375, 74.604 by changing the saturation by 10% instead.

■ 77, 12.375, 74.604

■ 77, 12.375, 74.604

■ 100, 12.375,
74.604

■ 67, 12.375, 74.604

■ 97, 12.375, 74.604

■ 57, 12.375, 74.604

■ 47, 12.375, 74.604

■ 37, 12.375, 74.604

■ 27, 12.375, 74.604

■ 17, 12.375, 74.604

■ 7, 12.375, 74.604

■ 0, 12.375, 74.604

■ 77, 12.375, 74.604

■ 77, 12.375, 74.604

74, 19.679, 73.355

80, 5.388, 75.828

71, 27.306, 72.072

83, 1.306, 257.397

68, 35.237, 70.772

86, 7.734, 258.354

65, 43.397, 69.441

89, 13.921,
259.482

63, 51.603, 68.040

92, 13.783,
240.876

60, 59.466, 66.468

58, 66.270, 64.518

95, 14.331,
214.875

56, 71.182, 61.929

97, 16.466,
198.412

55, 72.103, 61.434

Harmonies

Complementary

The Complementary color scheme is a pair of colors which are on the opposite of each other on the color wheel.



77, 12.375, 74.604



75, 11.858, 259.450

Rectangle

The Rectangle color scheme consists of four colors that form a rectangle on the color wheel.



77, 12.375, 74.604



77, 12.375, 124.604



77, 12.375, 254.604



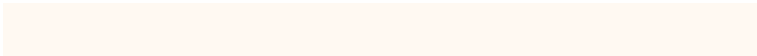
77, 12.375, 304.604

Sweetspot

The Sweet Spot groups the original color and five complimentary colors.



77, 12.376, 74.616



98, 3.973, 76.153



73, 17.129, 345.197



52, 2.715, 76.079



0, 0.000, 0.000



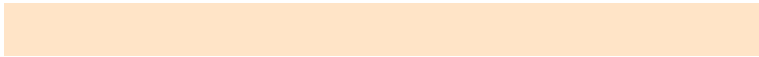
53, 0.007, 296.813

Same Dimension

The Same Dimension uses a secret algorithm to generate beautiful new colors.



77, 12.376, 74.616



92, 18.181, 74.083



82, 19.472, 108.440



41, 3.799, 75.669



45, 61.323, 62.053



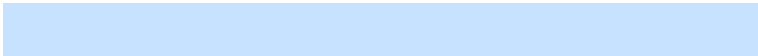
8, 14.355, 59.615

Inverse Universe

The Inverse Universe completely reimagines the original color for something new.



75, 11.858, 259.450



89, 17.220, 260.165



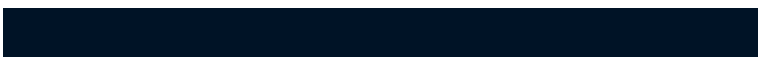
70, 20.292, 292.173



41, 3.725, 258.165



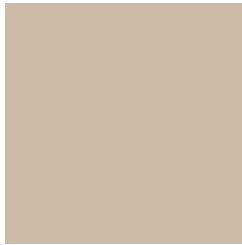
35, 53.313, 284.988



5, 15.403, 272.366

Previews

White Background



This preview shows how the CIELCh color 77, 12.375, 74.604 looks on a white background.

Color Contrast Check

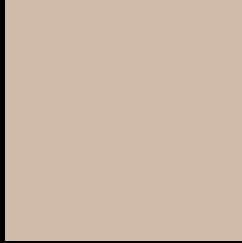
Large Text (above 18pt) WCAG AA × Fail

Any Text WCAG AA × Fail

Large Text (above 18pt) WCAG AAA × Fail

Any Text WCAG AAA × Fail

Black Background



This preview shows how the CIELCh color 77, 12.375, 74.604 looks on a black background.

Color Contrast Check

Large Text (above 18pt) WCAG AA ✓ Pass

Any Text WCAG AA ✓ Pass

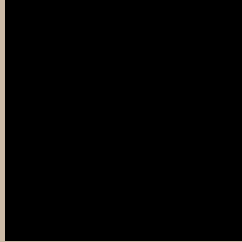
Large Text (above 18pt) WCAG AAA ✓ Pass

Any Text WCAG AAA ✓ Pass

If you want to check with other color combinations, try the [Color Contrast Checker](#).

CIELCh 77, 12.375, 74.604

Background



This preview shows how black text looks on a background with the CIELCh color 77, 12.375, 74.604.



This preview shows how white text looks on a background with the CIELCh color 77, 12.375, 74.604.

Color Blindness Simulation

Color vision deficiency is a very complex topic, and I could not describe the different causes any better than Wikipedia does, so if you want to learn more, you should check out their [article about color blindness](#).

Dichromacy





Tritanopia
77, 12.234, 342.617

Trichromacy



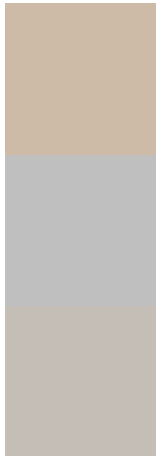
Original Color
77, 12.375, 74.604

Protanomaly
77, 11.660, 85.607

Deuteranomaly
77, 13.658, 58.600

Tritanomaly
77, 8.744, 13.065

Monochromacy



Original Color
77, 12.375, 74.604

Achromatopsia
77, 0.009, 296.813

Achromatomaly
77, 4.353, 78.570

CSS Examples

Text

The CSS property to change the color of the text to CIELCh 77, 12.375, 74.604 is called "color". The color property can be set on classes, ids or directly on the HTML element.

This example shows how text in the color `rgb(205, 187, 168)` looks like.

```
.text, #text, p{  
    color:rgb(205, 187, 168)  
}
```

If you want to add a text shadow in that color use the text-shadow property, you can generate a text shadow directly with our [CSS Text Shadow Generator](#).

Here you see how black text with a 4 pixel rgb(205, 187, 168) colored shadow looks like.

```
.shadow{ text-shadow: 4px 4px 2px rgb(205, 187, 168) }
```

Border

The CSS property to change the border of an element to CIELCh 77, 12.375, 74.604 is called "border". The border property can be set on classes, ids or directly on the HTML element.

This example shows the color as border, it can be applied via the CSS property "border" or "border-color".

```
.border, #border, table{ border:4px solid rgb(205, 187, 168) }
```


Background

The CSS property to change the background color of an element to CIELCh 77, 12.375, 74.604 is called "background". The background property can be set on classes, ids or directly on the HTML element.

```
.background, #background, body{  
background: rgb(205, 187, 168) }
```

If only the background color should be changed can be used:

```
.background{ background-color: rgb(205,  
187, 168) }
```

This example shows the color as background, it is applied via the CSS property "background".

To optimize and compress your CSS code, you can use our [online CSS compressor and optimizer](#) based on csstidy. If you want to create a linear or radial gradient as background or border, check our [CSS Gradient Generator](#).

Hey! You found this booklet interesting? Support Converting Colors with the new Membership Option!

The pro membership hides all ads, plus gives you double the colors in the color bucket, and more awesome pro features!

[Learn more, Memberships starting at \\$2.50/m!](#)

**Follow me
on Twitter!**

@ConvertingColor