

Converting Colors

CIELCh(77, 13.019, 20.171)

Have a look what the booklet for
CIELCh(77, 13.019, 20.171) contains.

CIELCh(77, 13.026, 20.448)	3
<i>Conversions</i>	4
<i>Details</i>	6
<i>Harmonies</i>	11
<i>Previews</i>	20
<i>Color Blindness Simulation</i>	23
<i>CSS Examples</i>	26

Color

CIELCh(77, 13.026, 20.448)

Conversions

Conversions Part 1

Format	Color
Hex	D8B6B6
RGB	216, 182, 182
RGB Percent	85%, 71%, 71%
CMY	0.1523, 0.2856, 0.2856
CMYK	0.00, 0.16, 0.16, 0.15
HSL	0°, 30%, 78%
HSV	0°, 16%, 85%
XYZ	53.5909, 51.5317, 51.4663
YIQ	192.1660, 20.2640, 7.2080

Conversions

Conversions Part 2

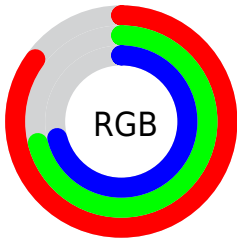
Format	Color
R _Y B	216, 182, 182
Decimal	14202550
CIE Lab	77.00, 12.21, 4.55
CIE LCh	77, 13.026, 20.448
Yxy	51.5317, 0.3422, 0.3291
Android (android.graphics.Color)	4292392630 (0xFFD8B6B6)
YUV	192.1660, -5.0118, 20.9024
Hunter-Lab	71.7856, 7.6327, 7.7423

Details

The CIELCh color **77, 13.026, 20.448** is a light color, and the websafe version is hex **FFCCCC**. A complement of this color would be **84, 11.765, 198.627**, and the grayscale version is **78, 0.009, 296.813**.

A 20% lighter version of the original color is **95, 6.091, 19.713**, and **57, 13.139, 20.784** is the 20% darker color. If you saturate the color by 10%, you get **71, 22.148, 21.428**, and if you desaturate by 10%, it is **83, 4.562, 19.639**.

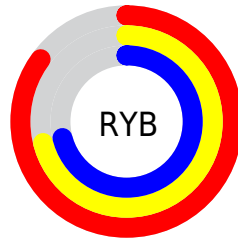
Distribution



Red (85%)

Green (71%)

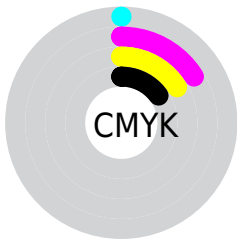
Blue (71%)



Red (85%)

Yellow (71%)

Blue (71%)

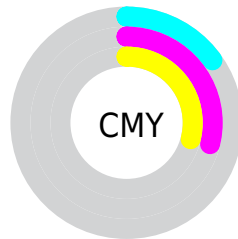


Cyan (0%)

Magenta (16%)

Yellow (16%)

Black (15%)



Cyan (15%)

Magenta (29%)

Yellow (29%)

Brightness & Saturation Gradients

These gradients show how the CIELCh color 77, 13.026, 20.448 changes by changing the brightness by 10 percent. The first figure shows a shift by +10% for each color and the second figure -10%.

Similar to the brightness gradients but the following saturation gradients show a change of the CIELCh color 77, 13.026, 20.448 by changing the saturation by 10% instead.

■ 77, 13.026, 20.448

■ 77, 13.026, 20.448

■ 100, 13.026,
20.448

■ 67, 13.026, 20.448

■ 97, 13.026, 20.448

■ 57, 13.026, 20.448

■ 47, 13.026, 20.448

■ 37, 13.026, 20.448

■ 27, 13.026, 20.448

■ 17, 13.026, 20.448

■ 7, 13.026, 20.448

■ 0, 13.026, 20.448

■ 77, 13.026, 20.448

■ 77, 13.026, 20.448

71, 22.148, 21.428

83, 4.562, 19.639

66, 31.909, 22.681

89, 3.264, 199.374

61, 42.212, 24.316

95, 10.500,
198.799

56, 52.866, 26.446

97, 13.037,
198.635

52, 63.572, 29.166

49, 73.917, 32.471

47, 83.226, 36.054

45, 90.033, 38.981

45, 92.314, 40.001

Harmonies

Complementary

The Complementary color scheme is a pair of colors which are on the opposite of each other on the color wheel.



77, 13.026, 20.448



84, 11.765, 198.627

Rectangle

The Rectangle color scheme consists of four colors that form a rectangle on the color wheel.



77, 13.026, 20.448



77, 13.026, 70.448



77, 13.026, 200.448



77, 13.026, 250.448

Sweetspot

The Sweet Spot groups the original color and five complimentary colors.



77, 13.024, 20.457



97, 4.538, 19.577



78, 21.978, 325.292



51, 3.105, 19.641



0, 0.000, 0.000



53, 0.007, 296.813

Same Dimension

The Same Dimension uses a secret algorithm to generate beautiful new colors.



77, 13.024, 20.457



87, 18.231, 20.766



81, 11.111, 73.458



42, 4.549, 19.939



35, 77.347, 39.900



5, 21.998, 19.773

Inverse Universe

The Inverse Universe completely reimagines the original color for something new.



84, 11.765, 198.627



97, 16.078, 198.448



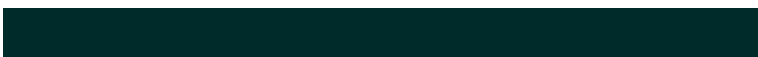
80, 10.673, 257.618



44, 4.287, 198.985



63, 37.116, 196.406



15, 14.556, 196.402

Previews

White Background



This preview shows how the CIELCh color 77, 13.026, 20.448 looks on a white background.

Color Contrast Check

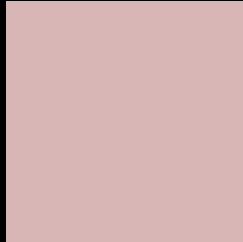
Large Text (above 18pt) WCAG AA × Fail

Any Text WCAG AA × Fail

Large Text (above 18pt) WCAG AAA × Fail

Any Text WCAG AAA × Fail

Black Background



This preview shows how the CIELCh color 77, 13.026, 20.448 looks on a black background.

Color Contrast Check

Large Text (above 18pt) WCAG AA ✓ Pass

Any Text WCAG AA ✓ Pass

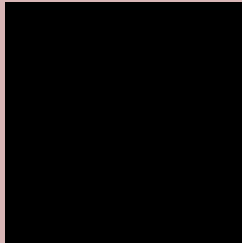
Large Text (above 18pt) WCAG AAA ✓ Pass

Any Text WCAG AAA ✓ Pass

If you want to check with other color combinations, try the [Color Contrast Checker](#).

CIELCh 77, 13.026, 20.448

Background



This preview shows how black text looks on a background with the CIELCh color 77, 13.026, 20.448.



This preview shows how white text looks on a background with the CIELCh color 77, 13.026, 20.448.

Color Blindness Simulation

Color vision deficiency is a very complex topic, and I could not describe the different causes any better than Wikipedia does, so if you want to learn more, you should check out their [article about color blindness](#).

Dichromacy



Original Color

77, 13.026, 20.448

Protanopia

77, 2.743, 55.160

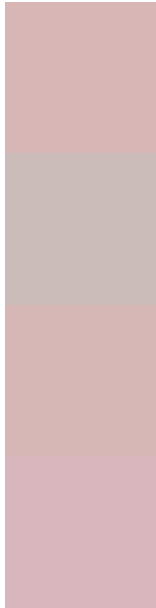
Deuteranopia

77, 10.755, 25.902



Tritanopia
77, 16.072, 353.069

Trichromacy



Original Color
77, 13.026, 20.448

Protanomaly
77, 6.124, 29.832

Deuteranomaly
77, 11.876, 22.902

Tritanomaly
77, 14.399, 1.152

Monochromacy



Original Color
77, 13.026, 20.448

Achromatopsia
78, 0.009, 296.813

Achromatomaly
77, 4.866, 19.689

CSS Examples

Text

The CSS property to change the color of the text to CIELCh 77, 13.026, 20.448 is called "color". The color property can be set on classes, ids or directly on the HTML element.

This example shows how text in the color `rgb(216, 182, 182)` looks like.

```
.text, #text, p{  
    color:rgb(216, 182, 182)  
}
```

If you want to add a text shadow in that color use the text-shadow property, you can generate a text shadow directly with our [CSS Text Shadow Generator](#).

Here you see how black text with a 4 pixel rgb(216, 182, 182) colored shadow looks like.

```
.shadow{ text-shadow: 4px 4px 2px rgb(216, 182, 182) }
```

Border

The CSS property to change the border of an element to CIELCh 77, 13.026, 20.448 is called "border". The border property can be set on classes, ids or directly on the HTML element.

This example shows the color as border, it can be applied via the CSS property "border" or "border-color".

```
.border, #border, table{ border:4px solid rgb(216, 182, 182) }
```

If only the border color should be changed use the property `border-color`.

```
.border{ border-color:rgb(216, 182, 182) }
```

If you want to add a box shadow in that color use:

Here you see how a box with a 4 pixel `rgb(216, 182, 182)` colored shadow looks like.

```
.boxshadow{ -moz-box-shadow:4px 4px 4px 4px rgb(216, 182, 182); -webkit-box-shadow:4px 4px 4px 4px rgb(216, 182, 182); box-shadow:4px 4px 4px 4px rgb(216, 182, 182) }
```

Background

The CSS property to change the background color of an element to CIELCh 77, 13.026, 20.448 is called "background". The background property can be set on classes, ids or directly on the HTML element.

```
.background, #background, body{  
background: rgb(216, 182, 182) }
```

If only the background color should be changed can be used:

```
.background{ background-color: rgb(216,  
182, 182) }
```

This example shows the color as background, it is applied via the CSS property "background".

To optimize and compress your CSS code, you can use our [online CSS compressor and optimizer](#) based on csstidy. If you want to create a linear or radial gradient as background or border, check our [CSS Gradient Generator](#).

Hey! You found this booklet interesting? Support Converting Colors with the new Membership Option!

The pro membership hides all ads, plus gives you double the colors in the color bucket, and more awesome pro features!

[Learn more, Memberships starting at \\$2.50/m!](#)

**Follow me
on Twitter!**

@ConvertingColor