

Converting Colors

CIELCh(77, 13.410, 16.706)

Have a look what the booklet for
CIELCh(77, 13.410, 16.706) contains.

CIELCh(77, 13.399, 18.214)	3
<i>Conversions</i>	4
<i>Details</i>	6
<i>Harmonies</i>	11
<i>Previews</i>	20
<i>Color Blindness Simulation</i>	23
<i>CSS Examples</i>	26

Color

CIELCh(77, 13.399, 18.214)

Conversions

Conversions Part 1

Format	Color
Hex	D9B6B7
RGB	217, 182, 183
RGB Percent	85%, 71%, 72%
CMY	0.1497, 0.2869, 0.2830
CMYK	0.00, 0.16, 0.16, 0.15
HSL	358°, 31%, 78%
HSV	358°, 16%, 85%
XYZ	53.7945, 51.5317, 51.8266
YIQ	192.5790, 20.5390, 7.7310

Conversions

Conversions Part 2

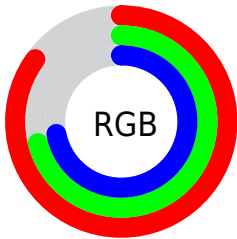
Format	Color
R _Y B	217, 182, 183
Decimal	14268087
CIE Lab	77.00, 12.73, 4.19
CIE LCh	77, 13.399, 18.214
Yxy	51.5317, 0.3423, 0.3279
Android (android.graphics.Color)	4292458167 (0xFFD9B6B7)
YUV	192.5790, -4.7224, 21.4172
Hunter-Lab	71.7856, 8.1389, 7.4448

Details

The CIELCh color **77, 13.399, 18.214** is a light color, and the websafe version is hex **FFCCCC**. A complement of this color would be **84, 12.135, 196.096**, and the grayscale version is **78, 0.009, 296.813**.

A 20% lighter version of the original color is **95, 6.107, 14.920**, and **57, 13.530, 18.452** is the 20% darker color. If you saturate the color by 10%, you get **71, 22.513, 19.270**, and if you desaturate by 10%, it is **83, 4.906, 17.336**.

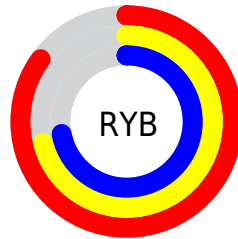
Distribution



Red (85%)

Green (71%)

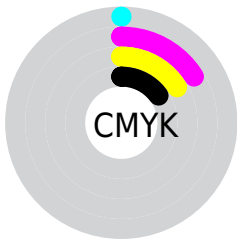
Blue (72%)



Red (85%)

Yellow (71%)

Blue (72%)

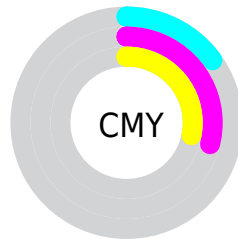


Cyan (0%)

Magenta (16%)

Yellow (16%)

Black (15%)



Cyan (15%)

Magenta (29%)

Yellow (28%)


Brightness & Saturation Gradients

These gradients show how the CIELCh color 77, 13.399, 18.214 changes by changing the brightness by 10 percent. The first figure shows a shift by +10% for each color and the second figure -10%.

Similar to the brightness gradients but the following saturation gradients show a change of the CIELCh color 77, 13.399, 18.214 by changing the saturation by 10% instead.

 77, 13.399, 18.214

 77, 13.399, 18.214

 100, 13.399,
18.214

 67, 13.399, 18.214

 97, 13.399, 18.214

 57, 13.399, 18.214

 47, 13.399, 18.214

 37, 13.399, 18.214

 27, 13.399, 18.214

 17, 13.399, 18.214

 7, 13.399, 18.214

 0, 13.399, 18.214

 77, 13.399, 18.214

 77, 13.399, 18.214

71, 22.513, 19.270

83, 4.906, 17.336

66, 32.217, 20.601

89, 2.972, 197.004

61, 42.400, 22.319

95, 10.280,
196.342

56, 52.855, 24.538

97, 12.823,
198.649

52, 63.282, 27.368

49, 73.298, 30.832

47, 82.366, 34.695

46, 89.375, 38.156

45, 91.340, 39.051

Harmonies

Complementary

The Complementary color scheme is a pair of colors which are on the opposite of each other on the color wheel.



77, 13.399, 18.214



84, 12.135, 196.096

Rectangle

The Rectangle color scheme consists of four colors that form a rectangle on the color wheel.



77, 13.399, 18.214



77, 13.399, 68.214



77, 13.399, 198.214



77, 13.399, 248.214

Sweetspot

The Sweet Spot groups the original color and five complimentary colors.



77, 13.397, 18.222



97, 4.542, 17.233



78, 22.379, 324.388



51, 3.107, 17.301



0, 0.000, 0.000



53, 0.007, 296.813

Same Dimension

The Same Dimension uses a secret algorithm to generate beautiful new colors.



77, 13.397, 18.222



87, 18.198, 18.517



81, 11.231, 69.792



43, 4.638, 17.626



36, 77.011, 38.759



5, 23.796, 19.043

Inverse Universe

The Inverse Universe completely reimagines the original color for something new.



77, 13.397, 18.222



87, 18.198, 18.517



80, 10.680, 253.920



43, 4.638, 17.626



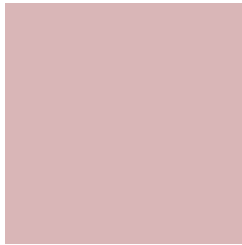
36, 77.011, 38.759



5, 23.796, 19.043

Previews

White Background



This preview shows how the CIELCh color 77, 13.399, 18.214 looks on a white background.

Color Contrast Check

Large Text (above 18pt) WCAG AA × Fail

Any Text WCAG AA × Fail

Large Text (above 18pt) WCAG AAA × Fail

Any Text WCAG AAA × Fail

Black Background



This preview shows how the CIE LCh color 77, 13.399, 18.214 looks on a black background.

Color Contrast Check

Large Text (above 18pt) WCAG AA ✓ Pass

Any Text WCAG AA ✓ Pass

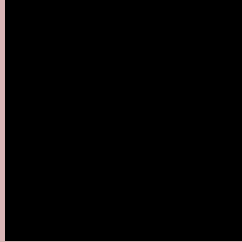
Large Text (above 18pt) WCAG AAA ✓ Pass

Any Text WCAG AAA ✓ Pass

If you want to check with other color combinations, try the [Color Contrast Checker](#).

CIELCh 77, 13.399, 18.214

Background



This preview shows how black text looks on a background with the CIELCh color 77, 13.399, 18.214.



This preview shows how white text looks on a background with the CIELCh color 77, 13.399, 18.214.

Color Blindness Simulation

Color vision deficiency is a very complex topic, and I could not describe the different causes any better than Wikipedia does, so if you want to learn more, you should check out their [article about color blindness](#).

Dichromacy



Original Color

77, 13.399, 18.214

Protanopia

77, 2.136, 49.342

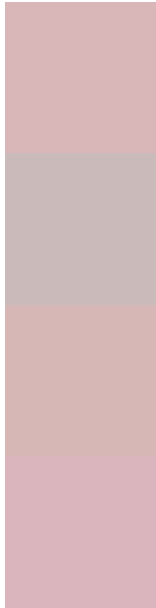
Deuteranopia

77, 10.755, 25.902



Tritanopia
77, 16.072, 353.069

Trichromacy



Original Color
77, 13.399, 18.214

Protanomaly
77, 6.051, 24.868

Deuteranomaly
77, 11.876, 22.902

Tritanomaly
77, 14.761, 1.691

Monochromacy



Original Color
77, 13.399, 18.214

Achromatopsia
78, 0.009, 296.813

Achromatomaly
77, 4.890, 13.425

CSS Examples

Text

The CSS property to change the color of the text to CIELCh 77, 13.399, 18.214 is called "color". The color property can be set on classes, ids or directly on the HTML element.

This example shows how text in the color `rgb(217, 182, 183)` looks like.

```
.text, #text, p{  
    color:rgb(217, 182, 183)  
}
```

If you want to add a text shadow in that color use the text-shadow property, you can generate a text shadow directly with our [CSS Text Shadow Generator](#).

Here you see how black text with a 4 pixel rgb(217, 182, 183) colored shadow looks like.

```
.shadow{ text-shadow: 4px 4px 2px rgb(217, 182, 183) }
```

Border

The CSS property to change the border of an element to CIELCh 77, 13.399, 18.214 is called "border". The border property can be set on classes, ids or directly on the HTML element.

This example shows the color as border, it can be applied via the CSS property "border" or "border-color".

```
.border, #border, table{ border:4px solid rgb(217, 182, 183) }
```

If only the border color should be changed use the property `border-color`.

```
.border{ border-color:rgb(217, 182, 183) }
```

If you want to add a box shadow in that color use:

Here you see how a box with a 4 pixel `rgb(217, 182, 183)` colored shadow looks like.

```
.boxshadow{ -moz-box-shadow:4px 4px 4px  
4px rgb(217, 182, 183); -webkit-box-  
shadow:4px 4px 4px 4px rgb(217, 182, 183);  
box-shadow:4px 4px 4px 4px rgb(217, 182,  
183) }
```

Background

The CSS property to change the background color of an element to CIELCh 77, 13.399, 18.214 is called "background". The background property can be set on classes, ids or directly on the HTML element.

```
.background, #background, body{  
background: rgb(217, 182, 183) }
```

If only the background color should be changed can be used:

```
.background{ background-color: rgb(217,  
182, 183) }
```

This example shows the color as background, it is applied via the CSS property "background".

To optimize and compress your CSS code, you can use our [online CSS compressor and optimizer](#) based on csstidy. If you want to create a linear or radial gradient as background or border, check our [CSS Gradient Generator](#).

Hey! You found this booklet interesting? Support Converting Colors with the new Membership Option!

The pro membership hides all ads, plus gives you double the colors in the color bucket, and more awesome pro features!

[Learn more, Memberships starting at \\$2.50/m!](#)

**Follow me
on Twitter!**

@ConvertingColor