

Converting Colors

CIELCh(77, 13.852, 22.708)

Have a look what the booklet for
CIELCh(77, 13.852, 22.708) contains.

CIELCh(77, 13.852, 22.708)	3
<i>Conversions</i>	4
<i>Details</i>	6
<i>Harmonies</i>	11
<i>Previews</i>	20
<i>Color Blindness Simulation</i>	23
<i>CSS Examples</i>	26

Color

CIELCh(77, 13.852, 22.708)

Conversions

Conversions Part 1

Format	Color
Hex	DAB6B5
RGB	218, 182, 181
RGB Percent	85%, 71%, 71%
CMY	0.1462, 0.2873, 0.2913
CMYK	0.00, 0.17, 0.17, 0.15
HSL	2°, 33%, 78%
HSV	2°, 17%, 85%
XYZ	53.8142, 51.5317, 50.6809
YIQ	192.6500, 21.7770, 7.3210

Conversions

Conversions Part 2

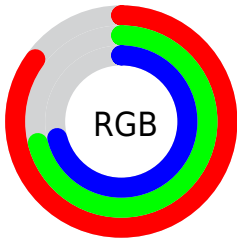
Format	Color
R_{YB}	218, 182, 181
Decimal	14333621
CIE _{Lab}	77.00, 12.78, 5.35
CIE _{LCh}	77, 13.852, 22.708
Yxy	51.5317, 0.3449, 0.3303
Android (android.graphics.Color)	4292523701 (0xFFDAB6B5)
YUV	192.6500, -5.7434, 22.2320
Hunter-Lab	71.7856, 8.1880, 8.3910

Details

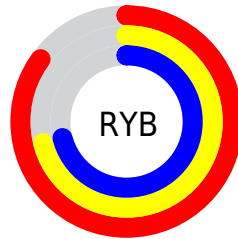
The CIELCh color **77, 13.852, 22.708** is a light color, and the websafe version is hex **FFCCCC**. A complement of this color would be **84, 12.385, 201.036**, and the grayscale version is **78, 0.009, 296.813**.

A 20% lighter version of the original color is **95, 6.119, 24.497**, and **57, 14.038, 23.167** is the 20% darker color. If you saturate the color by 10%, you get **71, 22.892, 23.606**, and if you desaturate by 10%, it is **83, 5.474, 21.991**.

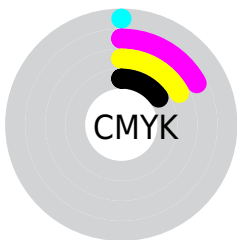
Distribution



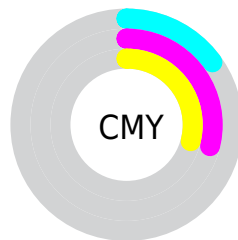
- Red (85%)
- Green (71%)
- Blue (71%)



- Red (85%)
- Yellow (71%)
- Blue (71%)



- Cyan (0%)
- Magenta (17%)
- Yellow (17%)
- Black (15%)



- Cyan (15%)
- Magenta (29%)
- Yellow (29%)

Brightness & Saturation Gradients

These gradients show how the CIELCh color 77, 13.852, 22.708 changes by changing the brightness by 10 percent. The first figure shows a shift by +10% for each color and the second figure -10%.

Similar to the brightness gradients but the following saturation gradients show a change of the CIELCh color 77, 13.852, 22.708 by changing the saturation by 10% instead.

77, 13.852, 22.708

77, 13.852, 22.708

100, 13.852,
22.708

67, 13.852, 22.708

97, 13.852, 22.708

57, 13.852, 22.708

47, 13.852, 22.708

37, 13.852, 22.708

27, 13.852, 22.708

17, 13.852, 22.708

7, 13.852, 22.708

0, 13.852, 22.708

77, 13.852, 22.708

77, 13.852, 22.708

71, 22.892, 23.606

83, 5.474, 21.991

66, 32.584, 24.768

89, 2.265, 201.857

61, 42.843, 26.296

95, 9.414, 201.276

56, 53.496, 28.288

97, 12.540,
198.668

52, 64.264, 30.819

49, 74.723, 33.857

47, 84.113, 37.057

46, 90.839, 39.511

46, 92.460, 40.232

Harmonies

Complementary

The Complementary color scheme is a pair of colors which are on the opposite of each other on the color wheel.



77, 13.852, 22.708



84, 12.385, 201.036

Rectangle

The Rectangle color scheme consists of four colors that form a rectangle on the color wheel.



77, 13.852, 22.708



77, 13.852, 72.708



77, 13.852, 202.708



77, 13.852, 252.708

Sweetspot

The Sweet Spot groups the original color and five complimentary colors.



77, 13.850, 22.717



97, 4.417, 21.839



78, 23.616, 325.814



51, 3.022, 21.897



0, 0.000, 0.000



53, 0.007, 296.813

Same Dimension

The Same Dimension uses a secret algorithm to generate beautiful new colors.



77, 13.850, 22.717



87, 18.774, 22.976



82, 12.230, 75.057



43, 4.516, 22.165



36, 77.861, 40.252



5, 23.410, 21.593

Inverse Universe

The Inverse Universe completely reimagines the original color for something new.



84, 12.385, 201.036



96, 16.408, 200.907



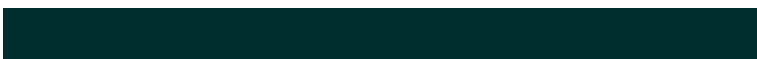
79, 11.758, 259.622



45, 4.252, 201.383



63, 36.149, 200.709



16, 14.609, 199.939

Previews

White Background



This preview shows how the CIELCh color 77, 13.852, 22.708 looks on a white background.

Color Contrast Check

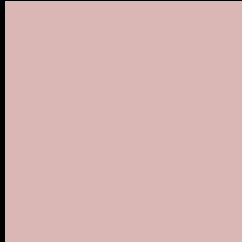
Large Text (above 18pt) WCAG AA × Fail

Any Text WCAG AA × Fail

Large Text (above 18pt) WCAG AAA × Fail

Any Text WCAG AAA × Fail

Black Background



This preview shows how the CIELCh color 77, 13.852, 22.708 looks on a black background.

Color Contrast Check

Large Text (above 18pt) WCAG AA ✓ Pass

Any Text WCAG AA ✓ Pass

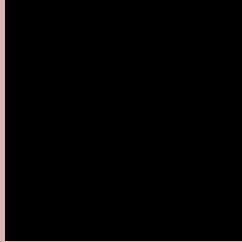
Large Text (above 18pt) WCAG AAA ✓ Pass

Any Text WCAG AAA ✓ Pass

If you want to check with other color combinations, try the [Color Contrast Checker](#).

CIELCh 77, 13.852, 22.708

Background



This preview shows how black text looks on a background with the CIELCh color 77, 13.852, 22.708.



This preview shows how white text looks on a background with the CIELCh color 77, 13.852, 22.708.

Color Blindness Simulation

Color vision deficiency is a very complex topic, and I could not describe the different causes any better than Wikipedia does, so if you want to learn more, you should check out their [article about color blindness](#).

Dichromacy



Original Color


77, 13.852, 22.708

Protanopia

77, 3.086, 63.238

Deuteranopia

77, 10.960, 31.411



Tritanopia
77, 16.408, 353.730

Trichromacy



Original Color
77, 13.852, 22.708

Protanomaly
77, 6.630, 33.811

Deuteranomaly
77, 12.024, 27.951

Tritanomaly
77, 14.991, 4.160

Monochromacy



Original Color
77, 13.852, 22.708

Achromatopsia
78, 0.009, 296.813

Achromatomaly
77, 4.866, 19.689

CSS Examples

Text

The CSS property to change the color of the text to CIELCh 77, 13.852, 22.708 is called "color". The color property can be set on classes, ids or directly on the HTML element.

This example shows how text in the color `rgb(218, 182, 181)` looks like.

```
.text, #text, p{  
    color:rgb(218, 182, 181)  
}
```

If you want to add a text shadow in that color use the text-shadow property, you can generate a text shadow directly with our [CSS Text Shadow Generator](#).

Here you see how black text with a 4 pixel rgb(218, 182, 181) colored shadow looks like.

```
.shadow{ text-shadow: 4px 4px 2px rgb(218, 182, 181) }
```

Border

The CSS property to change the border of an element to CIELCh 77, 13.852, 22.708 is called "border". The border property can be set on classes, ids or directly on the HTML element.

This example shows the color as border, it can be applied via the CSS property "border" or "border-color".

```
.border, #border, table{ border:4px solid rgb(218, 182, 181) }
```

If only the border color should be changed use the property `border-color`.

```
.border{ border-color:rgb(218, 182, 181) }
```

If you want to add a box shadow in that color use:

Here you see how a box with a 4 pixel `rgb(218, 182, 181)` colored shadow looks like.

```
.boxshadow{ -moz-box-shadow:4px 4px 4px  
4px rgb(218, 182, 181); -webkit-box-  
shadow:4px 4px 4px 4px rgb(218, 182, 181);  
box-shadow:4px 4px 4px 4px rgb(218, 182,  
181) }
```

Background

The CSS property to change the background color of an element to CIELCh 77, 13.852, 22.708 is called "background". The background property can be set on classes, ids or directly on the HTML element.

```
.background, #background, body{  
background: rgb(218, 182, 181) }
```

If only the background color should be changed can be used:

```
.background{ background-color: rgb(218,  
182, 181) }
```

This example shows the color as background, it is applied via the CSS property "background".

To optimize and compress your CSS code, you can use our [online CSS compressor and optimizer](#) based on csstidy. If you want to create a linear or radial gradient as background or border, check our [CSS Gradient Generator](#).

Hey! You found this booklet interesting? Support Converting Colors with the new Membership Option!

The pro membership hides all ads, plus gives you double the colors in the color bucket, and more awesome pro features!

[Learn more, Memberships starting at \\$2.50/m!](#)

**Follow me
on Twitter!**

@ConvertingColor