

# Converting Colors

CIELCh(77, 14.017, 7.607)

Have a look what the booklet for  
CIELCh(77, 14.017, 7.607) contains.

<b>CIELCh(77, 14.023, 7.401)</b> .....	3
<i><b>Conversions</b></i> .....	4
<i><b>Details</b></i> .....	6
<i><b>Harmonies</b></i> .....	11
<i><b>Previews</b></i> .....	20
<i><b>Color Blindness Simulation</b></i> .....	23
<i><b>CSS Examples</b></i> .....	26

# Color

**CIELCh(77, 14.023, 7.401)**

# Conversions

## Conversions Part 1

Format	Color
Hex	D9B5BB
RGB	217, 181, 187
RGB Percent	85%, 71%, 73%
CMY	0.1481, 0.2892, 0.2657
CMYK	0.00, 0.17, 0.14, 0.15
HSL	350°, 32%, 78%
HSV	350°, 17%, 85%
XYZ	54.2556, 51.5317, 54.2343
YIQ	192.4480, 19.5300, 9.4980

# Conversions

## Conversions Part 2

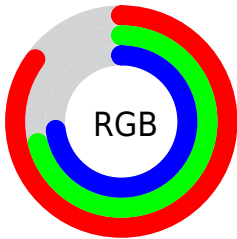
Format	Color
R <sub>Y</sub> B	217, 181, 187
Decimal	14267835
CIE Lab	77.00, 13.91, 1.81
CIE LCh	77, 14.023, 7.401
Yxy	51.5317, 0.3391, 0.3220
Android (android.graphics.Color)	4292457915 (0xFFD9B5BB)
YUV	192.4480, -2.6859, 21.5321
Hunter-Lab	71.7856, 9.2856, 5.4561

# Details

The CIELCh color **77, 14.023, 7.401** is a light color, and the websafe version is hex **FFCCCC**. A complement of this color would be **84, 13.033, 184.431**, and the grayscale version is **78, 0.009, 296.813**.

A 20% lighter version of the original color is **95, 7.124, 354.276**, and **57, 14.168, 7.119** is the 20% darker color. If you saturate the color by 10%, you get **71, 23.082, 8.651**, and if you desaturate by 10%, it is **83, 5.406, 6.321**.

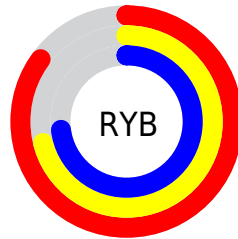
# Distribution



Red (85%)

Green (71%)

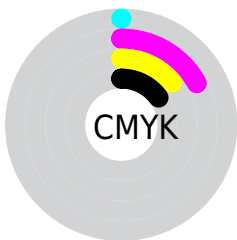
Blue (73%)



Red (85%)

Yellow (71%)

Blue (73%)

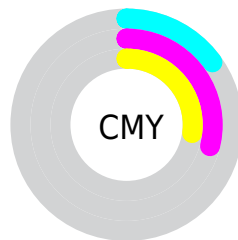


Cyan (0%)

Magenta (17%)

Yellow (14%)

Black (15%)



Cyan (15%)

Magenta (29%)

Yellow (27%)

# Brightness & Saturation Gradients


These gradients show how the CIELCh color 77, 14.023, 7.401 changes by changing the brightness by 10 percent. The first figure shows a shift by +10% for each color and the second figure -10%.

Similar to the brightness gradients but the following saturation gradients show a change of the CIELCh color 77, 14.023, 7.401 by changing the saturation by 10% instead.



 77, 14.023, 7.401       77, 14.023, 7.401

 100, 14.023, 7.401       67, 14.023, 7.401

 97, 14.023, 7.401       57, 14.023, 7.401

 47, 14.023, 7.401

 37, 14.023, 7.401

 27, 14.023, 7.401

 17, 14.023, 7.401

 7, 14.023, 7.401

 0, 14.023, 7.401

 77, 14.023, 7.401

 77, 14.023, 7.401

71, 23.082, 8.651

83, 5.406, 6.321

66, 32.500, 10.159

89, 2.731, 185.758

61, 42.102, 12.030

95, 10.396,  
184.861

56, 51.621, 14.388

97, 12.692,  
198.658

52, 60.710, 17.379

49, 69.026, 21.139

47, 76.349, 25.698

46, 82.637, 30.803

46, 84.686, 32.447

# Harmonies

# Complementary

The Complementary color scheme is a pair of colors which are on the opposite of each other on the color wheel.



77, 14.023, 7.401



84, 13.033, 184.431

# Rectangle

The Rectangle color scheme consists of four colors that form a rectangle on the color wheel.



77, 14.023, 7.401



77, 14.023, 57.401



77, 14.023, 187.401



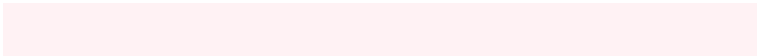
77, 14.023, 237.401

# Sweetspot

The Sweet Spot groups the original color and five complimentary colors.



77, 14.021, 7.408



97, 4.663, 6.148



77, 22.165, 320.544



51, 3.188, 6.230



0, 0.000, 0.000



53, 0.007, 296.813



# Same Dimension

The Same Dimension uses a secret algorithm to generate beautiful new colors.



77, 14.021, 7.408



87, 19.459, 7.831



80, 11.231, 54.368



43, 4.743, 6.628



36, 70.974, 31.588



5, 23.725, 13.069





# Inverse Universe

The Inverse Universe completely reimagines the original color for something new.



77, 14.021, 7.408



87, 19.459, 7.831



81, 10.299, 237.349



43, 4.743, 6.628



36, 70.974, 31.588

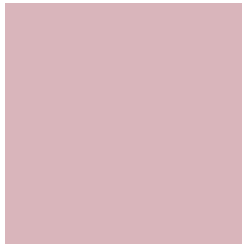


5, 23.725, 13.069



# Previews

## White Background



This preview shows how the CIELCh color 77, 14.023, 7.401 looks on a white background.

## Color Contrast Check

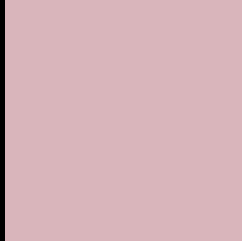
Large Text (above 18pt) WCAG AA × Fail

Any Text WCAG AA × Fail

Large Text (above 18pt) WCAG AAA × Fail

Any Text WCAG AAA × Fail

# Black Background



This preview shows how the CIELCh color 77, 14.023, 7.401 looks on a black background.

## Color Contrast Check

Large Text (above 18pt) WCAG AA ✓ Pass

Any Text WCAG AA ✓ Pass

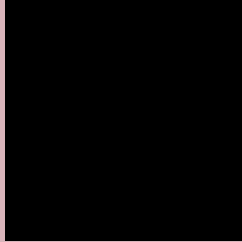
Large Text (above 18pt) WCAG AAA ✓ Pass

Any Text WCAG AAA ✓ Pass

If you want to check with other color combinations, try the [Color Contrast Checker](#).

# CIELCh 77, 14.023, 7.401

## Background



This preview shows how black text looks on a background with the CIELCh color 77, 14.023, 7.401.



This preview shows how white text looks on a background with the CIELCh color 77, 14.023, 7.401.

# Color Blindness Simulation

Color vision deficiency is a very complex topic, and I could not describe the different causes any better than Wikipedia does, so if you want to learn more, you should check out their [article about color blindness](#).

## Dichromacy



### Original Color

77, 14.023, 7.401

### Protanopia

77, 2.203, 332.329

### Deuteranopia

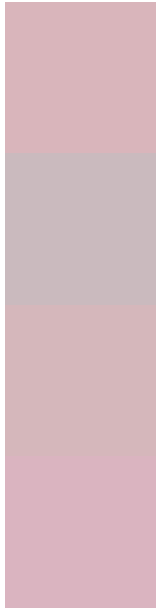
77, 9.954, 10.939



**Tritanopia**  
77, 16.072, 353.069



# Trichromacy



**Original Color**  
77, 14.023, 7.401

**Protanomaly**  
77, 6.359, 0.184

**Deuteranomaly**  
77, 11.555, 9.708

**Tritanomaly**  
77, 15.650, 356.591

# Monochromacy



**Original Color**  
77, 14.023, 7.401

**Achromatopsia**  
78, 0.009, 296.813

**Achromatomaly**  
78, 4.968, 7.293

# CSS Examples

## Text

The CSS property to change the color of the text to CIELCh 77, 14.023, 7.401 is called "color". The color property can be set on classes, ids or directly on the HTML element.

This example shows how text in the color `rgb(217, 181, 187)` looks like.

```
.text, #text, p{  
    color:rgb(217, 181, 187)  
}
```

If you want to add a text shadow in that color use the text-shadow property, you can generate a text shadow directly with our [CSS Text Shadow Generator](#).

Here you see how black text with a 4 pixel rgb(217, 181, 187) colored shadow looks like.

```
.shadow{ text-shadow: 4px 4px 2px rgb(217, 181, 187) }
```

## Border

The CSS property to change the border of an element to CIELCh 77, 14.023, 7.401 is called "border". The border property can be set on classes, ids or directly on the HTML element.

This example shows the color as border, it can be applied via the CSS property "border" or "border-color".

```
.border, #border, table{ border:4px solid rgb(217, 181, 187) }
```

If only the border color should be changed use the property `border-color`.

```
.border{ border-color:rgb(217, 181, 187) }
```

If you want to add a box shadow in that color use:

Here you see how a box with a 4 pixel `rgb(217, 181, 187)` colored shadow looks like.

```
.boxshadow{ -moz-box-shadow:4px 4px 4px  
4px rgb(217, 181, 187); -webkit-box-  
shadow:4px 4px 4px 4px rgb(217, 181, 187);  
box-shadow:4px 4px 4px 4px rgb(217, 181,  
187) }
```

# Background

The CSS property to change the background color of an element to CIELCh 77, 14.023, 7.401 is called "background". The background property can be set on classes, ids or directly on the HTML element.

```
.background, #background, body{  
background: rgb(217, 181, 187) }
```

If only the background color should be changed can be used:

```
.background{ background-color: rgb(217,  
181, 187) }
```

This example shows the color as background, it is applied via the CSS property "background".

To optimize and compress your CSS code, you can use our [online CSS compressor and optimizer](#) based on csstidy. If you want to create a linear or radial gradient as background or border, check our [CSS Gradient Generator](#).

Hey! You found this booklet interesting? Support Converting Colors with the new Membership Option!

The pro membership hides all ads, plus gives you double the colors in the color bucket, and more awesome pro features!

**[Learn more, Memberships starting at \\$2.50/m!](#)**

**Follow me  
on Twitter!**

@ConvertingColor