

Converting Colors

CIELCh(77, 14.823, 26.328)

Have a look what the booklet for
CIELCh(77, 14.823, 26.328) contains.

CIELCh(77, 14.719, 24.718)	3
<i>Conversions</i>	4
<i>Details</i>	6
<i>Harmonies</i>	11
<i>Previews</i>	20
<i>Color Blindness Simulation</i>	23
<i>CSS Examples</i>	26

Color

CIELCh(77, 14.719, 24.718)

Conversions

Conversions Part 1

Format	Color
Hex	DBB5B3
RGB	219, 181, 179
RGB Percent	86%, 71%, 70%
CMY	0.1400, 0.2891, 0.2969
CMYK	0.00, 0.17, 0.18, 0.14
HSL	3°, 36%, 78%
HSV	3°, 18%, 86%
XYZ	54.0457, 51.5317, 49.8929
YIQ	192.1340, 23.2900, 7.4340

Conversions

Conversions Part 2

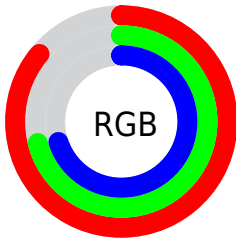
Format	Color
R_{YB}	219, 181, 179
Decimal	14398899
CIE _{Lab}	77.00, 13.37, 6.15
CIE _{LCh}	77, 14.719, 24.718
Yxy	51.5317, 0.3476, 0.3315
Android (android.graphics.Color)	4292588979 (0xFFDDBB5B3)
YUV	192.1340, -6.4751, 23.5615
Hunter-Lab	71.7856, 8.7635, 9.0418

Details

The CIELCh color **77, 14.719, 24.718** is a light color, and the websafe version is hex **FFCCCC**. A complement of this color would be **84, 13.028, 203.215**, and the grayscale version is **78, 0.009, 296.813**.

A 20% lighter version of the original color is **95, 6.555, 28.706**, and **57, 14.989, 25.273** is the 20% darker color. If you saturate the color by 10%, you get **71, 23.718, 25.542**, and if you desaturate by 10%, it is **83, 6.386, 24.080**.

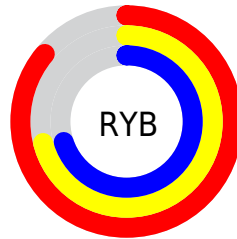
Distribution



Red (86%)

Green (71%)

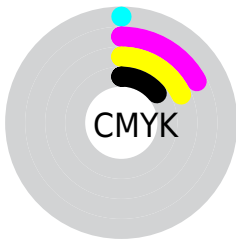
Blue (70%)



Red (86%)

Yellow (71%)

Blue (70%)

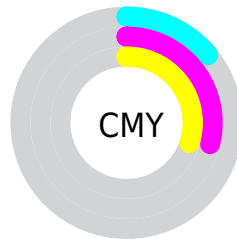


Cyan (0%)

Magenta (17%)

Yellow (18%)

Black (14%)



Cyan (14%)

Magenta (29%)

Yellow (30%)

Brightness & Saturation Gradients

These gradients show how the CIELCh color 77, 14.719, 24.718 changes by changing the brightness by 10 percent. The first figure shows a shift by +10% for each color and the second figure -10%.

Similar to the brightness gradients but the following saturation gradients show a change of the CIELCh color 77, 14.719, 24.718 by changing the saturation by 10% instead.

■ 77, 14.719, 24.718

■ 77, 14.719, 24.718

■ 100, 14.719,
24.718

■ 67, 14.719, 24.718

■ 97, 14.719, 24.718

■ 57, 14.719, 24.718

■ 47, 14.719, 24.718

■ 37, 14.719, 24.718

■ 27, 14.719, 24.718

■ 17, 14.719, 24.718

■ 7, 14.719, 24.718

■ 0, 14.719, 24.718

■ 77, 14.719, 24.718

■ 77, 14.719, 24.718

71, 23.718, 25.542

83, 6.386, 24.080

66, 33.379, 26.624

89, 1.304, 204.192

61, 43.626, 28.057

94, 8.404, 203.485

57, 54.298, 29.928

98, 12.033,
198.702

53, 65.124, 32.296

50, 75.663, 35.098

48, 85.061, 37.950

46, 91.691, 40.023

46, 92.670, 40.427

Harmonies

Complementary

The Complementary color scheme is a pair of colors which are on the opposite of each other on the color wheel.



77, 14.719, 24.718



84, 13.028, 203.215

Rectangle

The Rectangle color scheme consists of four colors that form a rectangle on the color wheel.



77, 14.719, 24.718



77, 14.719, 74.718



77, 14.719, 204.718



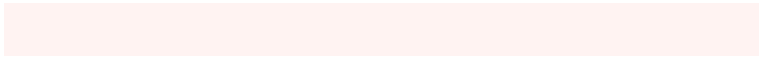
77, 14.719, 254.718

Sweetspot

The Sweet Spot groups the original color and five complimentary colors.



77, 14.717, 24.727



97, 4.320, 23.864



78, 24.949, 326.824



51, 2.956, 23.916



0, 0.000, 0.000



53, 0.007, 296.813

Same Dimension

The Same Dimension uses a secret algorithm to generate beautiful new colors.



77, 14.717, 24.727



86, 20.378, 25.022



82, 13.550, 78.284



43, 4.418, 24.154



36, 77.547, 40.525



6, 23.053, 22.757

Inverse Universe

The Inverse Universe completely reimagines the original color for something new.



84, 13.028, 203.215



96, 17.524, 203.100



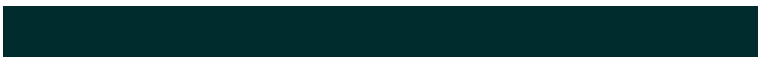
79, 13.111, 263.283



45, 4.158, 203.534



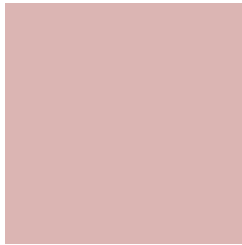
62, 35.121, 204.662



15, 14.254, 203.149

Previews

White Background



This preview shows how the CIELCh color 77, 14.719, 24.718 looks on a white background.

Color Contrast Check

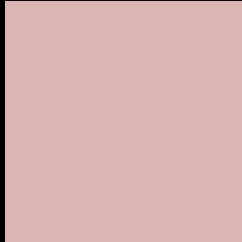
Large Text (above 18pt) WCAG AA × Fail

Any Text WCAG AA × Fail

Large Text (above 18pt) WCAG AAA × Fail

Any Text WCAG AAA × Fail

Black Background



This preview shows how the CIELCh color 77, 14.719, 24.718 looks on a black background.

Color Contrast Check

Large Text (above 18pt) WCAG AA ✓ Pass

Any Text WCAG AA ✓ Pass

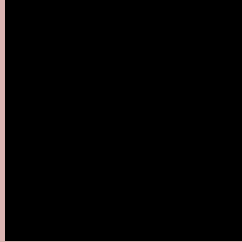
Large Text (above 18pt) WCAG AAA ✓ Pass

Any Text WCAG AAA ✓ Pass

If you want to check with other color combinations, try the [Color Contrast Checker](#).

CIELCh 77, 14.719, 24.718

Background



This preview shows how black text looks on a background with the CIELCh color 77, 14.719, 24.718.



This preview shows how white text looks on a background with the CIELCh color 77, 14.719, 24.718.

Color Blindness Simulation

Color vision deficiency is a very complex topic, and I could not describe the different causes any better than Wikipedia does, so if you want to learn more, you should check out their [article about color blindness](#).

Dichromacy



Original Color


77, 14.719, 24.718

Protanopia

77, 3.479, 69.586

Deuteranopia

77, 11.483, 33.631



Tritanopia
77, 17.446, 355.578

Trichromacy



Original Color
77, 14.719, 24.718

Protanomaly
77, 7.158, 37.210

Deuteranomaly
77, 12.522, 30.130

Tritanomaly
77, 15.748, 5.049

Monochromacy



Original Color
77, 14.719, 24.718

Achromatopsia
78, 0.009, 296.813

Achromatomaly
77, 5.279, 25.525

CSS Examples

Text

The CSS property to change the color of the text to CIELCh 77, 14.719, 24.718 is called "color". The color property can be set on classes, ids or directly on the HTML element.

This example shows how text in the color `rgb(219, 181, 179)` looks like.

```
.text, #text, p{  
    color:rgb(219, 181, 179)  
}
```

If you want to add a text shadow in that color use the text-shadow property, you can generate a text shadow directly with our [CSS Text Shadow Generator](#).

Here you see how black text with a 4 pixel rgb(219, 181, 179) colored shadow looks like.

```
.shadow{ text-shadow: 4px 4px 2px rgb(219, 181, 179) }
```

Border

The CSS property to change the border of an element to CIELCh 77, 14.719, 24.718 is called "border". The border property can be set on classes, ids or directly on the HTML element.

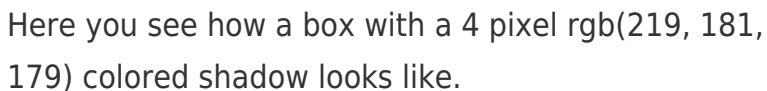
This example shows the color as border, it can be applied via the CSS property "border" or "border-color".

```
.border, #border, table{ border:4px solid rgb(219, 181, 179) }
```

If only the border color should be changed use the property `border-color`.

```
.border{ border-color:rgb(219, 181, 179) }
```

If you want to add a box shadow in that color use:



Here you see how a box with a 4 pixel `rgb(219, 181, 179)` colored shadow looks like.

```
.boxshadow{ -moz-box-shadow:4px 4px 4px  
4px rgb(219, 181, 179); -webkit-box-  
shadow:4px 4px 4px 4px rgb(219, 181, 179);  
box-shadow:4px 4px 4px 4px rgb(219, 181,  
179) }
```

Background

The CSS property to change the background color of an element to CIELCh 77, 14.719, 24.718 is called "background". The background property can be set on classes, ids or directly on the HTML element.

```
.background, #background, body{  
background: rgb(219, 181, 179) }
```

If only the background color should be changed can be used:

```
.background{ background-color: rgb(219,  
181, 179) }
```

This example shows the color as background, it is applied via the CSS property "background".

To optimize and compress your CSS code, you can use our [online CSS compressor and optimizer](#) based on csstidy. If you want to create a linear or radial gradient as background or border, check our [CSS Gradient Generator](#).

Hey! You found this booklet interesting? Support Converting Colors with the new Membership Option!

The pro membership hides all ads, plus gives you double the colors in the color bucket, and more awesome pro features!

[Learn more, Memberships starting at \\$2.50/m!](#)

**Follow me
on Twitter!**

@ConvertingColor