

Converting Colors

CIELCh(77, 14.976, 43.377)

Have a look what the booklet for
CIELCh(77, 14.976, 43.377) contains.

CIELCh(77, 14.958, 43.379)	3
<i>Conversions</i>	4
<i>Details</i>	6
<i>Harmonies</i>	11
<i>Previews</i>	20
<i>Color Blindness Simulation</i>	23
<i>CSS Examples</i>	26

Color

CIELCh(77, 14.958, 43.379)

Conversions

Conversions Part 1

Format	Color
Hex	DAB7AC
RGB	218, 183, 172
RGB Percent	85%, 72%, 67%
CMY	0.1466, 0.2837, 0.3269
CMYK	0.00, 0.16, 0.21, 0.15
HSL	14°, 38%, 76%
HSV	14°, 21%, 85%
XYZ	53.0736, 51.5317, 46.0006
YIQ	192.2110, 24.3910, 3.9990

Conversions

Conversions Part 2

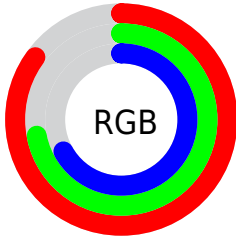
Format	Color
R _Y B	218, 186, 172
Decimal	14333868
CIE Lab	77.00, 10.87, 10.27
CIE LCh	77, 14.958, 43.379
Yxy	51.5317, 0.3524, 0.3422
Android (android.graphics.Color)	4292523948 (0xFFDAB7AC)
YUV	192.2110, -9.9640, 22.6170
Hunter-Lab	71.7856, 6.3464, 12.2566

Details

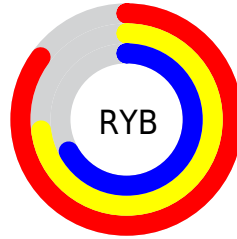
The CIELCh color $77, 14.958, 43.379$ is a light color, and the websafe version is hex `FFCCCC`. A complement of this color would be $81, 13.069, 225.378$, and the grayscale version is $78, 0.009, 296.813$.

A 20% lighter version of the original color is $95, 8.454, 66.043$, and $57, 15.098, 42.589$ is the 20% darker color. If you saturate the color by 10%, you get $72, 22.963, 43.234$, and if you desaturate by 10%, it is $82, 7.564, 43.633$.

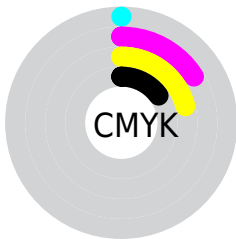
Distribution



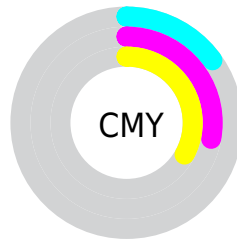
- Red (85%)
- Green (72%)
- Blue (67%)



- Red (85%)
- Yellow (73%)
- Blue (67%)



- Cyan (0%)
- Magenta (16%)
- Yellow (21%)
- Black (15%)



- Cyan (15%)
- Magenta (28%)
- Yellow (33%)

Brightness & Saturation Gradients

These gradients show how the CIELCh color 77, 14.958, 43.379 changes by changing the brightness by 10 percent. The first figure shows a shift by +10% for each color and the second figure -10%.

Similar to the brightness gradients but the following saturation gradients show a change of the CIELCh color 77, 14.958, 43.379 by changing the saturation by 10% instead.

■ 77, 14.958, 43.379

■ 77, 14.958, 43.379

■ 100, 14.958,
43.379

■ 67, 14.958, 43.379

■ 97, 14.958, 43.379

■ 57, 14.958, 43.379

■ 47, 14.958, 43.379

■ 37, 14.958, 43.379

■ 27, 14.958, 43.379

■ 17, 14.958, 43.379

■ 7, 14.958, 43.379

■ 0, 14.958, 43.379

■ 77, 14.958, 43.379

■ 77, 14.958, 43.379

72, 22.963, 43.234

82, 7.564, 43.633

68, 31.615, 43.216

86, 0.735, 43.303

64, 40.913, 43.368

91, 5.589, 224.602

60, 50.794, 43.705

96, 10.886,
215.662

56, 61.073, 44.204

97, 12.569,
198.666

53, 71.304, 44.729

51, 80.489, 44.899

49, 86.845, 44.537

Harmonies

Complementary

The Complementary color scheme is a pair of colors which are on the opposite of each other on the color wheel.



77, 14.958, 43.379



81, 13.069, 225.378

Rectangle

The Rectangle color scheme consists of four colors that form a rectangle on the color wheel.



77, 14.958, 43.379



77, 14.958, 93.379



77, 14.958, 223.379



77, 14.958, 273.379

Sweetspot

The Sweet Spot groups the original color and five complimentary colors.



77, 14.957, 43.389



97, 4.544, 43.744



75, 25.299, 333.097



51, 3.022, 43.734



0, 0.000, 0.000



53, 0.007, 296.813

Same Dimension

The Same Dimension uses a secret algorithm to generate beautiful new colors.



77, 14.957, 43.389



87, 20.468, 43.312



83, 18.370, 93.513



44, 3.857, 43.675



39, 72.903, 44.969



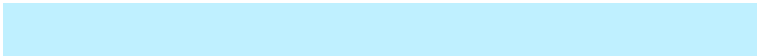
7, 20.446, 33.920

Inverse Universe

The Inverse Universe completely reimagines the original color for something new.



81, 13.069, 225.378



92, 17.364, 225.712



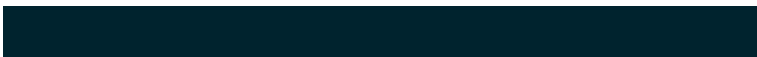
75, 18.569, 279.020



45, 3.646, 224.655



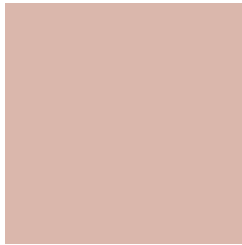
51, 33.842, 243.764



12, 13.197, 234.944

Previews

White Background



This preview shows how the CIELCh color 77, 14.958, 43.379 looks on a white background.

Color Contrast Check

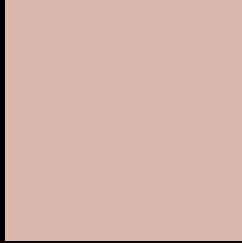
Large Text (above 18pt) WCAG AA × Fail

Any Text WCAG AA × Fail

Large Text (above 18pt) WCAG AAA × Fail

Any Text WCAG AAA × Fail

Black Background



This preview shows how the CIELCh color 77, 14.958, 43.379 looks on a black background.

Color Contrast Check

Large Text (above 18pt) WCAG AA ✓ Pass

Any Text WCAG AA ✓ Pass

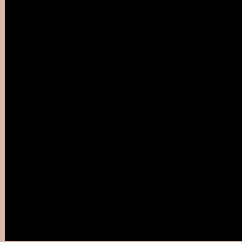
Large Text (above 18pt) WCAG AAA ✓ Pass

Any Text WCAG AAA ✓ Pass

If you want to check with other color combinations, try the [Color Contrast Checker](#).

CIELCh 77, 14.958, 43.379

Background



This preview shows how black text looks on a background with the CIELCh color 77, 14.958, 43.379.

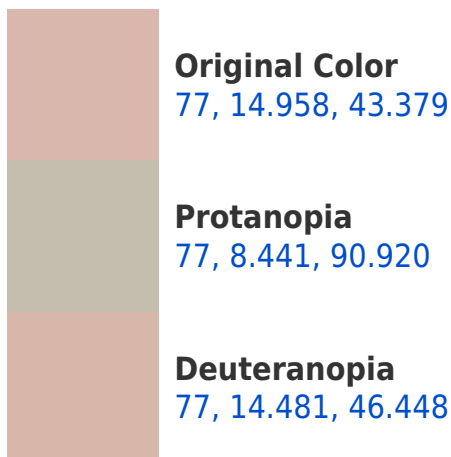


This preview shows how white text looks on a background with the CIELCh color 77, 14.958, 43.379.

Color Blindness Simulation

Color vision deficiency is a very complex topic, and I could not describe the different causes any better than Wikipedia does, so if you want to learn more, you should check out their [article about color blindness](#).

Dichromacy





Tritanopia
77, 17.104, 354.987

Trichromacy



Original Color
77, 14.958, 43.379

Protanomaly
77, 9.837, 64.565

Deuteranomaly
77, 14.843, 45.785

Tritanomaly
77, 15.100, 10.521

Monochromacy



Original Color
77, 14.958, 43.379

Achromatopsia
78, 0.009, 296.813

Achromatomaly
77, 4.987, 44.972

CSS Examples

Text

The CSS property to change the color of the text to CIELCh 77, 14.958, 43.379 is called "color". The color property can be set on classes, ids or directly on the HTML element.

This example shows how text in the color `rgb(218, 183, 172)` looks like.

```
.text, #text, p{  
    color:rgb(218, 183, 172)  
}
```

If you want to add a text shadow in that color use the text-shadow property, you can generate a text shadow directly with our [CSS Text Shadow Generator](#).

Here you see how black text with a 4 pixel rgb(218, 183, 172) colored shadow looks like.

```
.shadow{ text-shadow: 4px 4px 2px rgb(218, 183, 172) }
```

Border

The CSS property to change the border of an element to CIELCh 77, 14.958, 43.379 is called "border". The border property can be set on classes, ids or directly on the HTML element.

This example shows the color as border, it can be applied via the CSS property "border" or "border-color".

```
.border, #border, table{ border:4px solid rgb(218, 183, 172) }
```

If only the border color should be changed use the property `border-color`.

```
.border{ border-color:rgb(218, 183, 172) }
```

If you want to add a box shadow in that color use:

Here you see how a box with a 4 pixel `rgb(218, 183, 172)` colored shadow looks like.

```
.boxshadow{ -moz-box-shadow:4px 4px 4px  
4px rgb(218, 183, 172); -webkit-box-  
shadow:4px 4px 4px 4px rgb(218, 183, 172);  
box-shadow:4px 4px 4px 4px rgb(218, 183,  
172) }
```

Background

The CSS property to change the background color of an element to CIELCh 77, 14.958, 43.379 is called "background". The background property can be set on classes, ids or directly on the HTML element.

```
.background, #background, body{  
background: rgb(218, 183, 172) }
```

If only the background color should be changed can be used:

```
.background{ background-color: rgb(218,  
183, 172) }
```

This example shows the color as background, it is applied via the CSS property "background".

To optimize and compress your CSS code, you can use our [online CSS compressor and optimizer](#) based on csstidy. If you want to create a linear or radial gradient as background or border, check our [CSS Gradient Generator](#).

Hey! You found this booklet interesting? Support Converting Colors with the new Membership Option!

The pro membership hides all ads, plus gives you double the colors in the color bucket, and more awesome pro features!

[Learn more, Memberships starting at \\$2.50/m!](#)

**Follow me
on Twitter!**

@ConvertingColor