

Converting Colors

CIELCh(77, 15.250, 68.529)

Have a look what the booklet for
CIELCh(77, 15.250, 68.529) contains.

CIELCh(77, 15.421, 69.233)	3
<i>Conversions</i>	4
<i>Details</i>	6
<i>Harmonies</i>	11
<i>Previews</i>	20
<i>Color Blindness Simulation</i>	23
<i>CSS Examples</i>	26

Color

CIELCh(77, 15.421, 69.233)

Conversions

Conversions Part 1

Format	Color
Hex	D3BAA4
RGB	211, 186, 164
RGB Percent	83%, 73%, 64%
CMY	0.1733, 0.2713, 0.3576
CMYK	0.00, 0.12, 0.22, 0.17
HSL	28°, 35%, 73%
HSV	28°, 22%, 83%
XYZ	51.0111, 51.5317, 42.2927
YIQ	190.9670, 21.9620, -1.5420

Conversions

Conversions Part 2

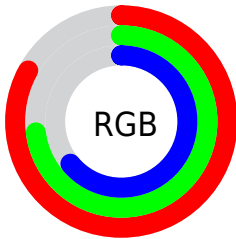
Format	Color
RYB	211, 205, 164
Decimal	13875876
CIELab	77.00, 5.47, 14.42
CIElCh	77, 15.421, 69.233
Yxy	51.5317, 0.3522, 0.3558
Android (android.graphics.Color)	4292065956 (0xFFD3BAA4)
YUV	190.9670, -13.2947, 17.5689
Hunter-Lab	71.7856, 1.2179, 15.3190

Details

The CIELCh color $77, 15.421, 69.233$ is a light color, and the websafe version is hex `CCCCCC`. A complement of this color would be $75, 14.357, 255.080$, and the grayscale version is $77, 0.009, 296.813$.

A 20% lighter version of the original color is $96, 12.674, 87.013$, and $57, 15.545, 69.591$ is the 20% darker color. If you saturate the color by 10%, you get $74, 22.943, 68.062$, and if you desaturate by 10%, it is $80, 8.282, 70.407$.

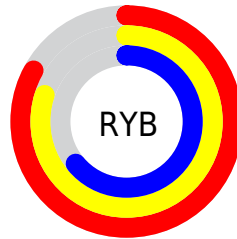
Distribution



Red (83%)

Green (73%)

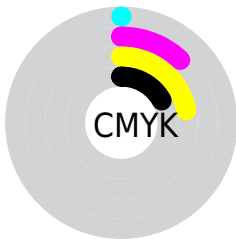
Blue (64%)



Red (83%)

Yellow (80%)

Blue (64%)

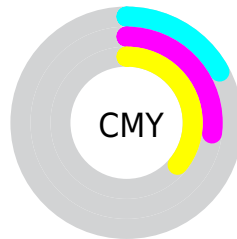


Cyan (0%)

Magenta (12%)

Yellow (22%)

Black (17%)



Cyan (17%)

Magenta (27%)

Yellow (36%)


Brightness & Saturation Gradients

These gradients show how the CIELCh color 77, 15.421, 69.233 changes by changing the brightness by 10 percent. The first figure shows a shift by +10% for each color and the second figure -10%.

Similar to the brightness gradients but the following saturation gradients show a change of the CIELCh color 77, 15.421, 69.233 by changing the saturation by 10% instead.

 77, 15.421, 69.233

 77, 15.421, 69.233

 100, 15.421,
69.233

 67, 15.421, 69.233

 97, 15.421, 69.233

 57, 15.421, 69.233

 47, 15.421, 69.233

 37, 15.421, 69.233

 27, 15.421, 69.233

 17, 15.421, 69.233

 7, 15.421, 69.233

 0, 15.421, 69.233

 77, 15.421, 69.233

 77, 15.421, 69.233

74, 22.943, 68.062

80, 8.282, 70.407

71, 30.857, 66.881

84, 1.499, 71.358

67, 39.137, 65.699

87, 4.961, 252.868

65, 47.687, 64.497

91, 11.132,
253.950

62, 56.267, 63.212

94, 12.205,
232.681

59, 64.366, 61.694

57, 71.073, 59.646

97, 14.111,
202.581

55, 75.047, 57.686

97, 14.745,
198.523

Harmonies

Complementary

The Complementary color scheme is a pair of colors which are on the opposite of each other on the color wheel.



77, 15.421, 69.233



75, 14.357, 255.080

Rectangle

The Rectangle color scheme consists of four colors that form a rectangle on the color wheel.



77, 15.421, 69.233



77, 15.421, 119.233



77, 15.421, 249.233



77, 15.421, 299.233

Sweetspot

The Sweet Spot groups the original color and five complimentary colors.



77, 15.421, 69.243



97, 5.430, 70.984



72, 22.185, 343.799



52, 3.534, 70.919



0, 0.000, 0.000



53, 0.007, 296.813

Same Dimension

The Same Dimension uses a secret algorithm to generate beautiful new colors.



77, 15.421, 69.243



89, 22.092, 68.653



83, 23.780, 106.602



42, 3.770, 70.732



44, 63.218, 58.332



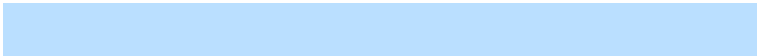
8, 15.740, 54.695

Inverse Universe

The Inverse Universe completely reimagines the original color for something new.



75, 14.357, 255.080



87, 20.197, 255.974



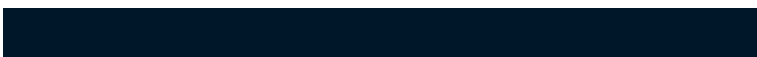
69, 24.960, 291.440



42, 3.671, 253.144



38, 49.285, 280.410



7, 15.520, 268.881

Previews

White Background



This preview shows how the CIELCh color 77, 15.421, 69.233 looks on a white background.

Color Contrast Check

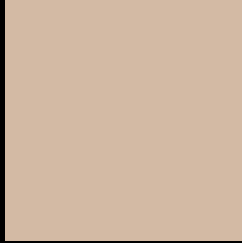
Large Text (above 18pt) WCAG AA × Fail

Any Text WCAG AA × Fail

Large Text (above 18pt) WCAG AAA × Fail

Any Text WCAG AAA × Fail

Black Background



This preview shows how the CIELCh color 77, 15.421, 69.233 looks on a black background.

Color Contrast Check

Large Text (above 18pt) WCAG AA ✓ Pass

Any Text WCAG AA ✓ Pass

Large Text (above 18pt) WCAG AAA ✓ Pass

Any Text WCAG AAA ✓ Pass

If you want to check with other color combinations, try the [Color Contrast Checker](#).

CIELCh 77, 15.421, 69.233

Background



This preview shows how black text looks on a background with the CIELCh color 77, 15.421, 69.233.




This preview shows how white text looks on a background with the CIELCh color 77, 15.421, 69.233.

Color Blindness Simulation

Color vision deficiency is a very complex topic, and I could not describe the different causes any better than Wikipedia does, so if you want to learn more, you should check out their [article about color blindness](#).

Dichromacy





Tritanopia
77, 14.739, 350.145

Trichromacy



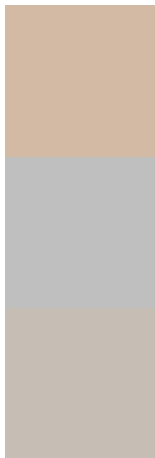
Original Color
77, 15.421, 69.233

Protanomaly
77, 13.642, 83.483

Deuteranomaly
77, 16.381, 60.589

Tritanomaly
77, 11.437, 17.644

Monochromacy



Original Color
77, 15.421, 69.233

Achromatopsia
77, 0.009, 296.813

Achromatomaly
77, 5.452, 71.093

CSS Examples

Text

The CSS property to change the color of the text to CIELCh 77, 15.421, 69.233 is called "color". The color property can be set on classes, ids or directly on the HTML element.

This example shows how text in the color `rgb(211, 186, 164)` looks like.

```
.text, #text, p{  
    color:rgb(211, 186, 164)  
}
```

If you want to add a text shadow in that color use the text-shadow property, you can generate a text shadow directly with our [CSS Text Shadow Generator](#).

Here you see how black text with a 4 pixel rgb(211, 186, 164) colored shadow looks like.

```
.shadow{ text-shadow: 4px 4px 2px rgb(211, 186, 164) }
```

Border

The CSS property to change the border of an element to CIELCh 77, 15.421, 69.233 is called "border". The border property can be set on classes, ids or directly on the HTML element.

This example shows the color as border, it can be applied via the CSS property "border" or "border-color".

```
.border, #border, table{ border:4px solid rgb(211, 186, 164) }
```

If only the border color should be changed use the property `border-color`.

```
.border{ border-color:rgb(211, 186, 164) }
```

If you want to add a box shadow in that color use:

Here you see how a box with a 4 pixel `rgb(211, 186, 164)` colored shadow looks like.

```
.boxshadow{ -moz-box-shadow:4px 4px 4px  
4px rgb(211, 186, 164); -webkit-box-  
shadow:4px 4px 4px 4px rgb(211, 186, 164);  
box-shadow:4px 4px 4px 4px rgb(211, 186,  
164) }
```

Background

The CSS property to change the background color of an element to CIELCh 77, 15.421, 69.233 is called "background". The background property can be set on classes, ids or directly on the HTML element.

```
.background, #background, body{  
background: rgb(211, 186, 164) }
```

If only the background color should be changed can be used:

```
.background{ background-color: rgb(211,  
186, 164) }
```

This example shows the color as background, it is applied via the CSS property "background".

To optimize and compress your CSS code, you can use our [online CSS compressor and optimizer](#) based on csstidy. If you want to create a linear or radial gradient as background or border, check our [CSS Gradient Generator](#).

Hey! You found this booklet interesting? Support Converting Colors with the new Membership Option!

The pro membership hides all ads, plus gives you double the colors in the color bucket, and more awesome pro features!

[Learn more, Memberships starting at \\$2.50/m!](#)

**Follow me
on Twitter!**

@ConvertingColor