

# Converting Colors

CIELCh(77, 15.303, 6.223)

Have a look what the booklet for  
CIELCh(77, 15.303, 6.223) contains.

<b>CIELCh(77, 15.377, 4.618)</b> .....	3
<i><b>Conversions</b></i> .....	4
<i><b>Details</b></i> .....	6
<i><b>Harmonies</b></i> .....	11
<i><b>Previews</b></i> .....	20
<i><b>Color Blindness Simulation</b></i> .....	23
<i><b>CSS Examples</b></i> .....	26

# Color

**CIELCh(77, 15.377, 4.618)**

# Conversions

## Conversions Part 1

<b>Format</b>	<b>Color</b>
Hex	DBB4BC
RGB	219, 180, 188
RGB Percent	86%, 71%, 74%
CMY	0.1398, 0.2928, 0.2615
CMYK	0.00, 0.18, 0.14, 0.14
HSL	348°, 35%, 78%
HSV	348°, 18%, 86%
XYZ	54.8152, 51.5317, 54.8197
YIQ	192.5730, 20.6760, 10.7560

# Conversions

## Conversions Part 2

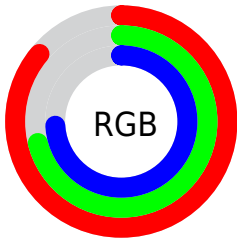
<b>Format</b>	<b>Color</b>
R <sub>Y</sub> B	219, 180, 188
Decimal	14398652
CIE Lab	77.00, 15.33, 1.24
CIE LCh	77, 15.377, 4.618
Yxy	51.5317, 0.3401, 0.3197
Android (android.graphics.Color)	4292588732 (0xFFDDBB4BC)
YUV	192.5730, -2.2545, 23.1765
Hunter-Lab	71.7856, 10.6769, 4.9727

# Details

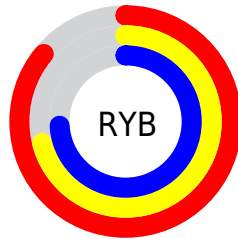
The CIELCh color  $77, 15.377, 4.618$  is a light color, and the websafe version is hex `FFCCCC`. A complement of this color would be  $85, 14.330, 181.283$ , and the grayscale version is  $78, 0.009, 296.813$ .

A 20% lighter version of the original color is  $95, 7.925, 348.738$ , and  $57, 15.605, 4.315$  is the 20% darker color. If you saturate the color by 10%, you get  $71, 24.584, 5.907$ , and if you desaturate by 10%, it is  $83, 6.560, 3.509$ .

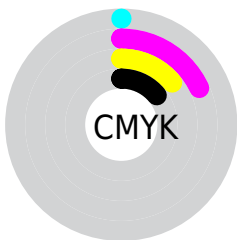
# Distribution



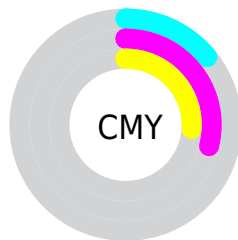
- Red (86%)
- Green (71%)
- Blue (74%)



- Red (86%)
- Yellow (71%)
- Blue (74%)



- Cyan (0%)
- Magenta (18%)
- Yellow (14%)
- Black (14%)



- Cyan (14%)
- Magenta (29%)
- Yellow (26%)

# Brightness & Saturation Gradients

These gradients show how the CIELCh color 77, 15.377, 4.618 changes by changing the brightness by 10 percent. The first figure shows a shift by +10% for each color and the second figure -10%.

Similar to the brightness gradients but the following saturation gradients show a change of the CIELCh color 77, 15.377, 4.618 by changing the saturation by 10% instead.



 77, 15.377, 4.618       77, 15.377, 4.618

 100, 15.377, 4.618       67, 15.377, 4.618

 97, 15.377, 4.618       57, 15.377, 4.618

 47, 15.377, 4.618

 37, 15.377, 4.618

 27, 15.377, 4.618

 17, 15.377, 4.618

 7, 15.377, 4.618

 0, 15.377, 4.618

 77, 15.377, 4.618

 77, 15.377, 4.618

71, 24.584, 5.907

83, 6.560, 3.509

66, 34.074, 7.455

89, 1.811, 182.982

61, 43.643, 9.366

95, 9.730, 181.945

56, 52.990, 11.765

98, 12.016,  
198.703

52, 61.742, 14.806

49, 69.548, 18.636

47, 76.228, 23.317

46, 81.907, 28.622

46, 83.152, 29.745

# Harmonies

# Complementary

The Complementary color scheme is a pair of colors which are on the opposite of each other on the color wheel.



77, 15.377, 4.618



85, 14.330, 181.283

# Rectangle

The Rectangle color scheme consists of four colors that form a rectangle on the color wheel.



77, 15.377, 4.618



77, 15.377, 54.618



77, 15.377, 184.618



77, 15.377, 234.618

# Sweetspot

The Sweet Spot groups the original color and five complimentary colors.



77, 15.375, 4.624



97, 4.727, 3.199



77, 23.675, 319.084



51, 3.231, 3.282



0, 0.000, 0.000



53, 0.007, 296.813



# Same Dimension

The Same Dimension uses a secret algorithm to generate beautiful new colors.



77, 15.375, 4.624



86, 20.683, 5.035



80, 12.304, 48.470



43, 4.803, 3.688



36, 69.206, 28.793



5, 23.748, 11.407





# Inverse Universe

The Inverse Universe completely reimagines the original color for something new.



77, 15.375, 4.624



86, 20.683, 5.035



82, 11.083, 230.899



43, 4.803, 3.688



36, 69.206, 28.793

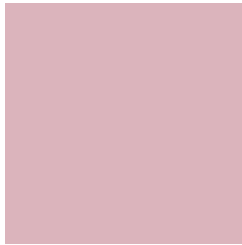


5, 23.748, 11.407



# Previews

## White Background



This preview shows how the CIELCh color 77, 15.377, 4.618 looks on a white background.

## Color Contrast Check

Large Text (above 18pt) WCAG AA × Fail

Any Text WCAG AA × Fail

Large Text (above 18pt) WCAG AAA × Fail

Any Text WCAG AAA × Fail

# Black Background



This preview shows how the CIELCh color 77, 15.377, 4.618 looks on a black background.

## Color Contrast Check

Large Text (above 18pt) WCAG AA ✓ Pass

Any Text WCAG AA ✓ Pass

Large Text (above 18pt) WCAG AAA ✓ Pass

Any Text WCAG AAA ✓ Pass

If you want to check with other color combinations, try the [Color Contrast Checker](#).

**CIELCh 77, 15.377, 4.618**

## **Background**



This preview shows how black text looks on a background with the CIELCh color 77, 15.377, 4.618.



This preview shows how white text looks on a background with the CIELCh color 77, 15.377, 4.618.

# Color Blindness Simulation

Color vision deficiency is a very complex topic, and I could not describe the different causes any better than Wikipedia does, so if you want to learn more, you should check out their [article about color blindness](#).

## Dichromacy



### Original Color


77, 15.377, 4.618

### Protanopia

77, 3.083, 318.858

### Deuteranopia

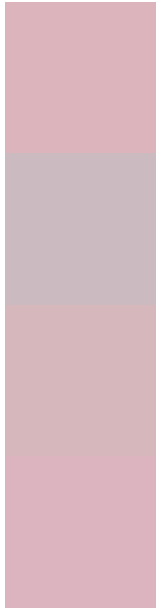
77, 10.037, 7.924



**Tritanopia**  
77, 16.540, 356.048



# Trichromacy



**Original Color**  
77, 15.377, 4.618

**Protanomaly**  
77, 7.116, 353.107

**Deuteranomaly**  
77, 11.645, 7.118

**Tritanomaly**  
77, 16.173, 359.538

# Monochromacy



**Original Color**  
77, 15.377, 4.618

**Achromatopsia**  
78, 0.009, 296.813

**Achromatomaly**  
78, 5.829, 3.842

# CSS Examples

## Text

The CSS property to change the color of the text to CIELCh 77, 15.377, 4.618 is called "color". The color property can be set on classes, ids or directly on the HTML element.

This example shows how text in the color `rgb(219, 180, 188)` looks like.

```
.text, #text, p{  
    color:rgb(219, 180, 188)  
}
```

If you want to add a text shadow in that color use the text-shadow property, you can generate a text shadow directly with our [CSS Text Shadow Generator](#).

Here you see how black text with a 4 pixel rgb(219, 180, 188) colored shadow looks like.

```
.shadow{ text-shadow: 4px 4px 2px rgb(219, 180, 188) }
```

## Border

The CSS property to change the border of an element to CIELCh 77, 15.377, 4.618 is called "border". The border property can be set on classes, ids or directly on the HTML element.

This example shows the color as border, it can be applied via the CSS property "border" or "border-color".

```
.border, #border, table{ border:4px solid rgb(219, 180, 188) }
```

If only the border color should be changed use the property `border-color`.

```
.border{ border-color:rgb(219, 180, 188) }
```

If you want to add a box shadow in that color use:

Here you see how a box with a 4 pixel `rgb(219, 180, 188)` colored shadow looks like.

```
.boxshadow{ -moz-box-shadow:4px 4px 4px  
4px rgb(219, 180, 188); -webkit-box-  
shadow:4px 4px 4px 4px rgb(219, 180, 188);  
box-shadow:4px 4px 4px 4px rgb(219, 180,  
188) }
```

# Background

The CSS property to change the background color of an element to CIELCh 77, 15.377, 4.618 is called "background". The background property can be set on classes, ids or directly on the HTML element.

```
.background, #background, body{  
background: rgb(219, 180, 188) }
```

If only the background color should be changed can be used:

```
.background{ background-color: rgb(219,  
180, 188) }
```

This example shows the color as background, it is applied via the CSS property "background".

To optimize and compress your CSS code, you can use our [online CSS compressor and optimizer](#) based on csstidy. If you want to create a linear or radial gradient as background or border, check our [CSS Gradient Generator](#).

Hey! You found this booklet interesting? Support Converting Colors with the new Membership Option!

The pro membership hides all ads, plus gives you double the colors in the color bucket, and more awesome pro features!

**[Learn more, Memberships starting at \\$2.50/m!](#)**

**Follow me  
on Twitter!**

@ConvertingColor