

Converting Colors

CIELCh(77, 15.742, 3.367)

Have a look what the booklet for
CIELCh(77, 15.742, 3.367) contains.

CIELCh(77, 15.872, 3.179)	3
<i>Conversions</i>	4
<i>Details</i>	6
<i>Harmonies</i>	11
<i>Previews</i>	20
<i>Color Blindness Simulation</i>	23
<i>CSS Examples</i>	26

Color

CIELCh(77, 15.872, 3.179)

Conversions

Conversions Part 1

Format	Color
Hex	DCB4BD
RGB	220, 180, 189
RGB Percent	86%, 71%, 74%
CMY	0.1373, 0.2941, 0.2588
CMYK	0.00, 0.18, 0.14, 0.14
HSL	347°, 36%, 78%
HSV	347°, 18%, 86%
XYZ	55.0211, 51.5317, 55.1904
YIQ	192.9860, 20.9510, 11.2790

Conversions

Conversions Part 2

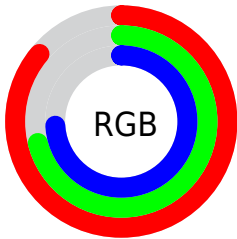
Format	Color
R _{YB}	220, 180, 189
Decimal	14464189
CIE Lab	77.00, 15.85, 0.88
CIE LCh	77, 15.872, 3.179
Yxy	51.5317, 0.3402, 0.3186
Android (android.graphics.Color)	4292654269 (0xFFDCB4BD)
YUV	192.9860, -1.9651, 23.6913
Hunter-Lab	71.7856, 11.1889, 4.6665

Details

The CIELCh color **77, 15.872, 3.179** is a light color, and the websafe version is hex **FFCCCC**. A complement of this color would be **85, 14.831, 179.719**, and the grayscale version is **78, 0.009, 296.813**.

A 20% lighter version of the original color is **95, 8.198, 345.671**, and **57, 16.128, 2.846** is the 20% darker color. If you saturate the color by 10%, you get **71, 25.139, 4.477**, and if you desaturate by 10%, it is **83, 6.969, 2.062**.

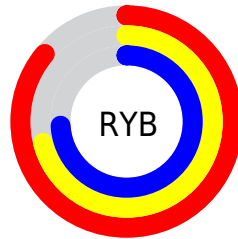
Distribution



Red (86%)

Green (71%)

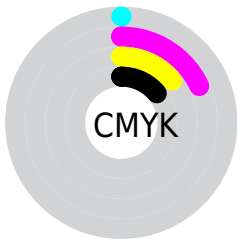
Blue (74%)



Red (86%)

Yellow (71%)

Blue (74%)

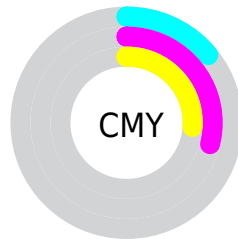


Cyan (0%)

Magenta (18%)

Yellow (14%)

Black (14%)



Cyan (14%)

Magenta (29%)

Yellow (26%)

Brightness & Saturation Gradients

These gradients show how the CIELCh color 77, 15.872, 3.179 changes by changing the brightness by 10 percent. The first figure shows a shift by +10% for each color and the second figure -10%.

Similar to the brightness gradients but the following saturation gradients show a change of the CIELCh color 77, 15.872, 3.179 by changing the saturation by 10% instead.

 77, 15.872, 3.179  77, 15.872, 3.179

 100, 15.872, 3.179  67, 15.872, 3.179

 97, 15.872, 3.179  57, 15.872, 3.179

 47, 15.872, 3.179

 37, 15.872, 3.179

 27, 15.872, 3.179

 17, 15.872, 3.179

 7, 15.872, 3.179

 0, 15.872, 3.179

 77, 15.872, 3.179

 77, 15.872, 3.179

71, 25.139, 4.477

83, 6.969, 2.062

66, 34.651, 6.031

89, 1.506, 181.572

61, 44.193, 7.943

95, 9.542, 180.463

56, 53.447, 10.340

98, 11.803,
198.717

52, 62.029, 13.375

50, 69.582, 17.206

47, 75.937, 21.908

46, 81.290, 27.278

46, 82.267, 28.221

Harmonies

Complementary

The Complementary color scheme is a pair of colors which are on the opposite of each other on the color wheel.



77, 15.872, 3.179



85, 14.831, 179.719

Rectangle

The Rectangle color scheme consists of four colors that form a rectangle on the color wheel.



77, 15.872, 3.179



77, 15.872, 53.179



77, 15.872, 183.179



77, 15.872, 233.179

Sweetspot

The Sweet Spot groups the original color and five complimentary colors.



77, 15.870, 3.184



97, 4.765, 1.707



77, 24.161, 318.588



51, 3.257, 1.791



0, 0.000, 0.000



53, 0.007, 296.813

Same Dimension

The Same Dimension uses a secret algorithm to generate beautiful new colors.



77, 15.870, 3.184



85, 21.846, 3.676



79, 12.692, 46.545



43, 4.839, 2.198



36, 68.341, 27.237



5, 23.766, 10.548

Inverse Universe

The Inverse Universe completely reimagines the original color for something new.



77, 15.870, 3.184



85, 21.846, 3.676



82, 11.368, 228.743



43, 4.839, 2.198



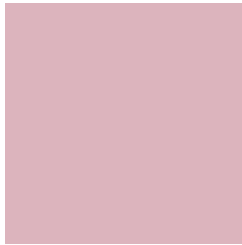
36, 68.341, 27.237



5, 23.766, 10.548

Previews

White Background



This preview shows how the CIELCh color 77, 15.872, 3.179 looks on a white background.

Color Contrast Check

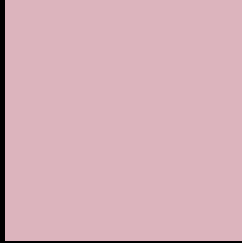
Large Text (above 18pt) WCAG AA × Fail

Any Text WCAG AA × Fail

Large Text (above 18pt) WCAG AAA × Fail

Any Text WCAG AAA × Fail

Black Background



This preview shows how the CIELCh color 77, 15.872, 3.179 looks on a black background.

Color Contrast Check

Large Text (above 18pt) WCAG AA ✓ Pass

Any Text WCAG AA ✓ Pass

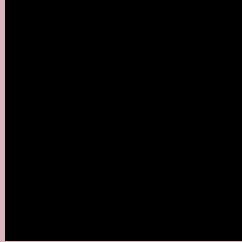
Large Text (above 18pt) WCAG AAA ✓ Pass

Any Text WCAG AAA ✓ Pass

If you want to check with other color combinations, try the [Color Contrast Checker](#).

CIELCh 77, 15.872, 3.179

Background



This preview shows how black text looks on a background with the CIELCh color 77, 15.872, 3.179.



This preview shows how white text looks on a background with the CIELCh color 77, 15.872, 3.179.

Color Blindness Simulation

Color vision deficiency is a very complex topic, and I could not describe the different causes any better than Wikipedia does, so if you want to learn more, you should check out their [article about color blindness](#).

Dichromacy



Original Color


77, 15.872, 3.179

Protanopia

77, 2.922, 312.538

Deuteranopia

77, 9.663, 7.401



Tritanopia
77, 17.446, 355.578

Trichromacy



Original Color
77, 15.872, 3.179

Protanomaly
77, 6.784, 351.633

Deuteranomaly
77, 11.645, 7.118

Tritanomaly
77, 17.251, 357.208

Monochromacy



Original Color
77, 15.872, 3.179

Achromatopsia
78, 0.009, 296.813

Achromatomaly
78, 5.993, 358.923

CSS Examples

Text

The CSS property to change the color of the text to CIELCh 77, 15.872, 3.179 is called "color". The color property can be set on classes, ids or directly on the HTML element.

This example shows how text in the color `rgb(220, 180, 189)` looks like.

```
.text, #text, p{  
    color:rgb(220, 180, 189)  
}
```

If you want to add a text shadow in that color use the text-shadow property, you can generate a text shadow directly with our [CSS Text Shadow Generator](#).

Here you see how black text with a 4 pixel rgb(220, 180, 189) colored shadow looks like.

```
.shadow{ text-shadow: 4px 4px 2px rgb(220, 180, 189) }
```

Border

The CSS property to change the border of an element to CIELCh 77, 15.872, 3.179 is called "border". The border property can be set on classes, ids or directly on the HTML element.

This example shows the color as border, it can be applied via the CSS property "border" or "border-color".

```
.border, #border, table{ border:4px solid rgb(220, 180, 189) }
```

If only the border color should be changed use the property `border-color`.

```
.border{ border-color:rgb(220, 180, 189) }
```

If you want to add a box shadow in that color use:

Here you see how a box with a 4 pixel `rgb(220, 180, 189)` colored shadow looks like.

```
.boxshadow{ -moz-box-shadow:4px 4px 4px  
4px rgb(220, 180, 189); -webkit-box-  
shadow:4px 4px 4px 4px rgb(220, 180, 189);  
box-shadow:4px 4px 4px 4px rgb(220, 180,  
189) }
```

Background

The CSS property to change the background color of an element to CIELCh 77, 15.872, 3.179 is called "background". The background property can be set on classes, ids or directly on the HTML element.

```
.background, #background, body{  
background: rgb(220, 180, 189) }
```

If only the background color should be changed can be used:

```
.background{ background-color: rgb(220,  
180, 189) }
```

This example shows the color as background, it is applied via the CSS property "background".

To optimize and compress your CSS code, you can use our [online CSS compressor and optimizer](#) based on csstidy. If you want to create a linear or radial gradient as background or border, check our [CSS Gradient Generator](#).

Hey! You found this booklet interesting? Support Converting Colors with the new Membership Option!

The pro membership hides all ads, plus gives you double the colors in the color bucket, and more awesome pro features!

[Learn more, Memberships starting at \\$2.50/m!](#)

**Follow me
on Twitter!**

@ConvertingColor