

Converting Colors

CIELCh(77, 15.936, 26.254)

Have a look what the booklet for
CIELCh(77, 15.936, 26.254) contains.

CIELCh(77, 15.592, 26.502)	3
<i>Conversions</i>	4
<i>Details</i>	6
<i>Harmonies</i>	11
<i>Previews</i>	20
<i>Color Blindness Simulation</i>	23
<i>CSS Examples</i>	26

Color

CIELCh(77, 15.592, 26.502)

Conversions

Conversions Part 1

Format	Color
Hex	DDB5B2
RGB	221, 181, 178
RGB Percent	87%, 71%, 70%
CMY	0.1340, 0.2908, 0.3026
CMYK	0.00, 0.18, 0.19, 0.13
HSL	4°, 39%, 78%
HSV	4°, 19%, 87%
XYZ	54.2742, 51.5317, 49.1177
YIQ	192.6180, 24.8030, 7.5470

Conversions

Conversions Part 2

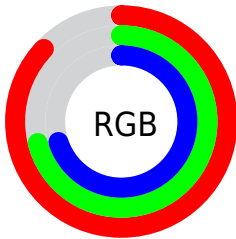
Format	Color
R_{YB}	221, 181, 178
Decimal	14529970
CIE _{Lab}	77.00, 13.95, 6.96
CIE _{LCh}	77, 15.592, 26.502
Yxy	51.5317, 0.3503, 0.3326
Android (android.graphics.Color)	4292720050 (0xFFDDB5B2)
YUV	192.6180, -7.2067, 24.8910
Hunter-Lab	71.7856, 9.3319, 9.6821

Details

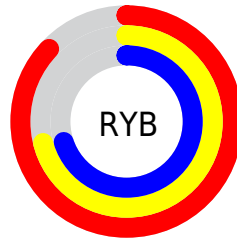
The CIELCh color **77, 15.592, 26.502** is a light color, and the websafe version is hex **FFCCCC**. A complement of this color would be **84, 13.667, 205.186**, and the grayscale version is **78, 0.009, 296.813**.

A 20% lighter version of the original color is **95, 6.662, 33.035**, and **57, 15.516, 27.247** is the 20% darker color. If you saturate the color by 10%, you get **72, 24.578, 27.260**, and if you desaturate by 10%, it is **83, 7.277, 25.934**.

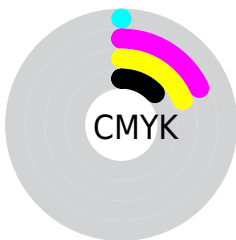
Distribution



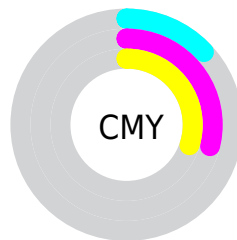
- Red (87%)
- Green (71%)
- Blue (70%)



- Red (87%)
- Yellow (71%)
- Blue (70%)



- Cyan (0%)
- Magenta (18%)
- Yellow (19%)
- Black (13%)



- Cyan (13%)
- Magenta (29%)
- Yellow (30%)

Brightness & Saturation Gradients

These gradients show how the CIELCh color 77, 15.592, 26.502 changes by changing the brightness by 10 percent. The first figure shows a shift by +10% for each color and the second figure -10%.

Similar to the brightness gradients but the following saturation gradients show a change of the CIELCh color 77, 15.592, 26.502 by changing the saturation by 10% instead.

77, 15.592, 26.502

77, 15.592, 26.502

100, 15.592,
26.502

67, 15.592, 26.502

97, 15.592, 26.502

57, 15.592, 26.502

47, 15.592, 26.502

37, 15.592, 26.502

27, 15.592, 26.502

17, 15.592, 26.502

7, 15.592, 26.502

0, 15.592, 26.502

77, 15.592, 26.502

77, 15.592, 26.502

72, 24.578, 27.260

83, 7.277, 25.934

66, 34.234, 28.270

88, 0.392, 207.164

61, 44.490, 29.618

94, 7.469, 205.452

57, 55.193, 31.383

98, 11.535,
198.735

53, 66.074, 33.605

50, 76.665, 36.195

48, 86.014, 38.726

47, 92.558, 40.506

47, 92.868, 40.622

Harmonies

Complementary

The Complementary color scheme is a pair of colors which are on the opposite of each other on the color wheel.



77, 15.592, 26.502



84, 13.667, 205.186

Rectangle

The Rectangle color scheme consists of four colors that form a rectangle on the color wheel.



77, 15.592, 26.502



77, 15.592, 76.502



77, 15.592, 206.502



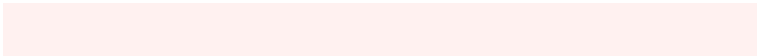
77, 15.592, 256.502

Sweetspot

The Sweet Spot groups the original color and five complimentary colors.



77, 15.590, 26.510



96, 5.111, 25.741



77, 26.476, 327.382



51, 3.399, 25.780



0, 0.000, 0.000



53, 0.007, 296.813

Same Dimension

The Same Dimension uses a secret algorithm to generate beautiful new colors.



77, 15.590, 26.510



85, 21.016, 26.764



82, 14.754, 79.756



43, 4.338, 25.932



36, 77.271, 40.768



6, 22.752, 23.788

Inverse Universe

The Inverse Universe completely reimagines the original color for something new.



84, 13.667, 205.186



95, 17.919, 205.117



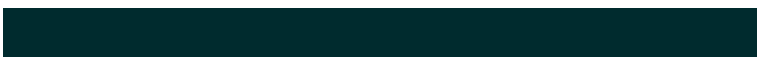
79, 14.310, 265.135



45, 4.081, 205.457



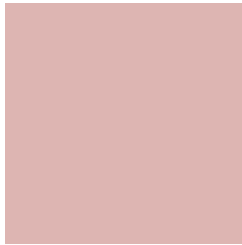
60, 34.360, 208.262



15, 13.980, 206.048

Previews

White Background



This preview shows how the CIELCh color 77, 15.592, 26.502 looks on a white background.

Color Contrast Check

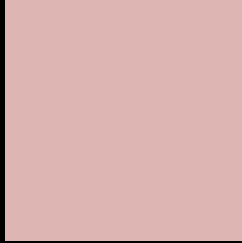
Large Text (above 18pt) WCAG AA × Fail

Any Text WCAG AA × Fail

Large Text (above 18pt) WCAG AAA × Fail

Any Text WCAG AAA × Fail

Black Background



This preview shows how the CIELCh color 77, 15.592, 26.502 looks on a black background.

Color Contrast Check

Large Text (above 18pt) WCAG AA ✓ Pass

Any Text WCAG AA ✓ Pass

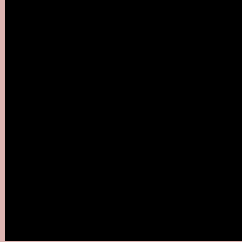
Large Text (above 18pt) WCAG AAA ✓ Pass

Any Text WCAG AAA ✓ Pass

If you want to check with other color combinations, try the [Color Contrast Checker](#).

CIELCh 77, 15.592, 26.502

Background



This preview shows how black text looks on a background with the CIELCh color 77, 15.592, 26.502.



This preview shows how white text looks on a background with the CIELCh color 77, 15.592, 26.502.

Color Blindness Simulation

Color vision deficiency is a very complex topic, and I could not describe the different causes any better than Wikipedia does, so if you want to learn more, you should check out their [article about color blindness](#).

Dichromacy



Original Color

77, 15.592, 26.502

Protanopia

77, 4.353, 78.570

Deuteranopia

77, 12.204, 38.015



Tritanopia
77, 17.953, 358.276

Trichromacy



Original Color
77, 15.592, 26.502

Protanomaly
77, 7.564, 44.861

Deuteranomaly
77, 13.189, 34.363

Tritanomaly
77, 16.396, 7.675

Monochromacy



Original Color
77, 15.592, 26.502

Achromatopsia
78, 0.009, 296.813

Achromatomaly
77, 5.279, 25.525

CSS Examples

Text

The CSS property to change the color of the text to CIELCh 77, 15.592, 26.502 is called "color". The color property can be set on classes, ids or directly on the HTML element.

This example shows how text in the color `rgb(221, 181, 178)` looks like.

```
.text, #text, p{  
    color:rgb(221, 181, 178)  
}
```

If you want to add a text shadow in that color use the text-shadow property, you can generate a text shadow directly with our [CSS Text Shadow Generator](#).

Here you see how black text with a 4 pixel rgb(221, 181, 178) colored shadow looks like.

```
.shadow{ text-shadow: 4px 4px 2px rgb(221, 181, 178) }
```

Border

The CSS property to change the border of an element to CIELCh 77, 15.592, 26.502 is called "border". The border property can be set on classes, ids or directly on the HTML element.

This example shows the color as border, it can be applied via the CSS property "border" or "border-color".

```
.border, #border, table{ border:4px solid rgb(221, 181, 178) }
```

If only the border color should be changed use the property `border-color`.

```
.border{ border-color:rgb(221, 181, 178) }
```

If you want to add a box shadow in that color use:

Here you see how a box with a 4 pixel `rgb(221, 181, 178)` colored shadow looks like.

```
.boxshadow{ -moz-box-shadow:4px 4px 4px 4px rgb(221, 181, 178); -webkit-box-shadow:4px 4px 4px 4px rgb(221, 181, 178); box-shadow:4px 4px 4px 4px rgb(221, 181, 178) }
```

Background

The CSS property to change the background color of an element to CIELCh 77, 15.592, 26.502 is called "background". The background property can be set on classes, ids or directly on the HTML element.

```
.background, #background, body{  
background: rgb(221, 181, 178) }
```

If only the background color should be changed can be used:

```
.background{ background-color: rgb(221,  
181, 178) }
```

This example shows the color as background, it is applied via the CSS property "background".

To optimize and compress your CSS code, you can use our [online CSS compressor and optimizer](#) based on csstidy. If you want to create a linear or radial gradient as background or border, check our [CSS Gradient Generator](#).

Hey! You found this booklet interesting? Support Converting Colors with the new Membership Option!

The pro membership hides all ads, plus gives you double the colors in the color bucket, and more awesome pro features!

[Learn more, Memberships starting at \\$2.50/m!](#)

**Follow me
on Twitter!**

@ConvertingColor