

# Converting Colors

CIELCh(77, 16.251, 35.724)

Have a look what the booklet for  
CIELCh(77, 16.251, 35.724) contains.

<b>CIELCh(77, 16.269, 35.732)</b> .....	3
<i><b>Conversions</b></i> .....	4
<i><b>Details</b></i> .....	6
<i><b>Harmonies</b></i> .....	11
<i><b>Previews</b></i> .....	20
<i><b>Color Blindness Simulation</b></i> .....	23
<i><b>CSS Examples</b></i> .....	26

# Color

**CIELCh(77, 16.269, 35.732)**

# Conversions

## Conversions Part 1

Format	Color
Hex	DDB5AD
RGB	221, 181, 173
RGB Percent	87%, 71%, 68%
CMY	0.1327, 0.2896, 0.3210
CMYK	0.00, 0.18, 0.22, 0.13
HSL	10°, 42%, 77%
HSV	10°, 22%, 87%
XYZ	53.9815, 51.5317, 46.7146
YIQ	192.0480, 26.4080, 5.9920

# Conversions

## Conversions Part 2

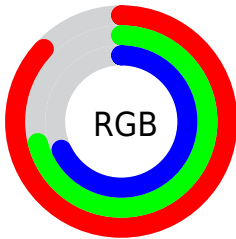
Format	Color
R <sub>Y</sub> B	221, 183, 173
Decimal	14529965
CIE Lab	77.00, 13.21, 9.50
CIE LCh	77, 16.269, 35.732
Yxy	51.5317, 0.3546, 0.3385
Android (android.graphics.Color)	4292720045 (0xFFDDB5AD)
YUV	192.0480, -9.3907, 25.3909
Hunter-Lab	71.7856, 8.6040, 11.6669

# Details

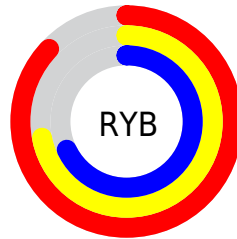
The CIELCh color **77, 16.269, 35.732** is a light color, and the websafe version is hex **CC9999**. A complement of this color would be **83, 14.035, 216.189**, and the grayscale version is **78, 0.009, 296.813**.

A 20% lighter version of the original color is **95, 7.999, 54.786**, and **57, 16.127, 35.092** is the 20% darker color. If you saturate the color by 10%, you get **72, 24.783, 36.015**, and if you desaturate by 10%, it is **82, 8.414, 35.602**.

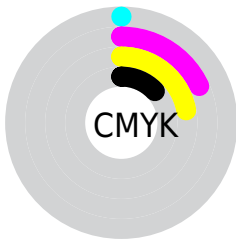
# Distribution



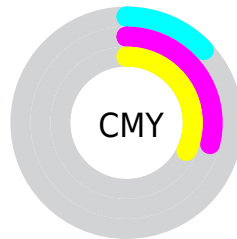
- Red (87%)
- Green (71%)
- Blue (68%)



- Red (87%)
- Yellow (72%)
- Blue (68%)



- Cyan (0%)
- Magenta (18%)
- Yellow (22%)
- Black (13%)



- Cyan (13%)
- Magenta (29%)
- Yellow (32%)

# Brightness & Saturation Gradients


These gradients show how the CIELCh color 77, 16.269, 35.732 changes by changing the brightness by 10 percent. The first figure shows a shift by +10% for each color and the second figure -10%.

Similar to the brightness gradients but the following saturation gradients show a change of the CIELCh color 77, 16.269, 35.732 by changing the saturation by 10% instead.



 77, 16.269, 35.732

 77, 16.269, 35.732

 100, 16.269,  
35.732

 67, 16.269, 35.732

 97, 16.269, 35.732

 57, 16.269, 35.732

 47, 16.269, 35.732

 37, 16.269, 35.732

 27, 16.269, 35.732

 17, 16.269, 35.732

 7, 16.269, 35.732

 0, 16.269, 35.732

 77, 16.269, 35.732

 77, 16.269, 35.732

72, 24.783, 36.015

82, 8.414, 35.602

67, 33.979, 36.485

87, 1.176, 35.183

63, 43.831, 37.198

93, 5.501, 215.899

59, 54.242, 38.192

98, 11.381,  
199.073

55, 64.979, 39.456

98, 11.425,  
198.743

52, 75.545, 40.848

49, 84.824, 41.921

48, 90.608, 42.322

# Harmonies

# Complementary

The Complementary color scheme is a pair of colors which are on the opposite of each other on the color wheel.



77, 16.269, 35.732



83, 14.035, 216.189

# Rectangle

The Rectangle color scheme consists of four colors that form a rectangle on the color wheel.



77, 16.269, 35.732



77, 16.269, 85.732



77, 16.269, 215.732



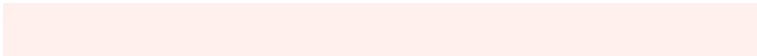
77, 16.269, 265.732

# Sweetspot

The Sweet Spot groups the original color and five complimentary colors.



77, 16.268, 35.741



96, 5.539, 35.547



76, 27.594, 330.719



51, 3.608, 35.556



0, 0.000, 0.000



53, 0.007, 296.813



# Same Dimension

The Same Dimension uses a secret algorithm to generate beautiful new colors.



77, 16.268, 35.741



85, 22.288, 35.844



83, 17.967, 88.355



43, 4.014, 35.578



37, 75.190, 42.664



7, 21.367, 29.280





# Inverse Universe

The Inverse Universe completely reimagines the original color for something new.



83, 14.035, 216.189



93, 18.578, 216.365



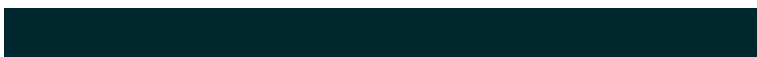
76, 17.881, 274.273



45, 3.780, 215.908



55, 32.608, 228.132



13, 13.152, 221.963



# Previews

## White Background



This preview shows how the CIELCh color 77, 16.269, 35.732 looks on a white background.

## Color Contrast Check

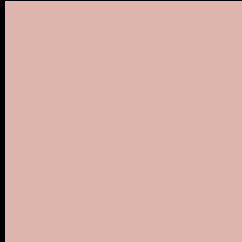
Large Text (above 18pt) WCAG AA × Fail

Any Text WCAG AA × Fail

Large Text (above 18pt) WCAG AAA × Fail

Any Text WCAG AAA × Fail

# Black Background



This preview shows how the CIELCh color 77, 16.269, 35.732 looks on a black background.

## Color Contrast Check

Large Text (above 18pt) WCAG AA ✓ Pass

Any Text WCAG AA ✓ Pass

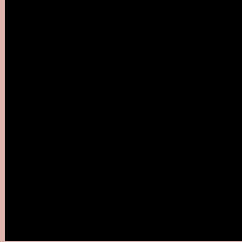
Large Text (above 18pt) WCAG AAA ✓ Pass

Any Text WCAG AAA ✓ Pass

If you want to check with other color combinations, try the [Color Contrast Checker](#).

# CIELCh 77, 16.269, 35.732

## Background



This preview shows how black text looks on a background with the CIELCh color 77, 16.269, 35.732.



This preview shows how white text looks on a background with the CIELCh color 77, 16.269, 35.732.

# Color Blindness Simulation

Color vision deficiency is a very complex topic, and I could not describe the different causes any better than Wikipedia does, so if you want to learn more, you should check out their [article about color blindness](#).

## Dichromacy



### Original Color

77, 16.269, 35.732

### Protanopia

77, 6.930, 86.974

### Deuteranopia

77, 13.479, 45.958



**Tritanopia**  
77, 18.504, 357.239



# Trichromacy



**Original Color**  
77, 16.269, 35.732

**Protanomaly**  
77, 9.390, 58.460

**Deuteranomaly**  
77, 14.351, 42.096

**Tritanomaly**  
77, 16.716, 9.822

# Monochromacy



**Original Color**  
77, 16.269, 35.732

**Achromatopsia**  
78, 0.009, 296.813

**Achromatomaly**  
77, 5.874, 35.561

# CSS Examples

## Text

The CSS property to change the color of the text to CIELCh 77, 16.269, 35.732 is called "color". The color property can be set on classes, ids or directly on the HTML element.

This example shows how text in the color `rgb(221, 181, 173)` looks like.

```
.text, #text, p{  
    color:rgb(221, 181, 173)  
}
```

If you want to add a text shadow in that color use the text-shadow property, you can generate a text shadow directly with our [CSS Text Shadow Generator](#).

Here you see how black text with a 4 pixel rgb(221, 181, 173) colored shadow looks like.

```
.shadow{ text-shadow: 4px 4px 2px rgb(221, 181, 173) }
```

## Border

The CSS property to change the border of an element to CIELCh 77, 16.269, 35.732 is called "border". The border property can be set on classes, ids or directly on the HTML element.

This example shows the color as border, it can be applied via the CSS property "border" or "border-color".

```
.border, #border, table{ border:4px solid rgb(221, 181, 173) }
```

If only the border color should be changed use the property `border-color`.

```
.border{ border-color:rgb(221, 181, 173) }
```

If you want to add a box shadow in that color use:

Here you see how a box with a 4 pixel `rgb(221, 181, 173)` colored shadow looks like.

```
.boxshadow{ -moz-box-shadow:4px 4px 4px  
4px rgb(221, 181, 173); -webkit-box-  
shadow:4px 4px 4px 4px rgb(221, 181, 173);  
box-shadow:4px 4px 4px 4px rgb(221, 181,  
173) }
```

# Background

The CSS property to change the background color of an element to CIELCh 77, 16.269, 35.732 is called "background". The background property can be set on classes, ids or directly on the HTML element.

```
.background, #background, body{  
background: rgb(221, 181, 173) }
```

If only the background color should be changed can be used:

```
.background{ background-color: rgb(221,  
181, 173) }
```

This example shows the color as background, it is applied via the CSS property "background".

To optimize and compress your CSS code, you can use our [online CSS compressor and optimizer](#) based on csstidy. If you want to create a linear or radial gradient as background or border, check our [CSS Gradient Generator](#).

Hey! You found this booklet interesting? Support Converting Colors with the new Membership Option!

The pro membership hides all ads, plus gives you double the colors in the color bucket, and more awesome pro features!

**[Learn more, Memberships starting at \\$2.50/m!](#)**

**Follow me  
on Twitter!**

@ConvertingColor