

Converting Colors

CIELCh(77, 16.728, 42.921)

Have a look what the booklet for
CIELCh(77, 16.728, 42.921) contains.

CIELCh(77, 16.707, 42.923)	3
<i>Conversions</i>	4
<i>Details</i>	6
<i>Harmonies</i>	11
<i>Previews</i>	20
<i>Color Blindness Simulation</i>	23
<i>CSS Examples</i>	26

Color

CIELCh(77, 16.707, 42.923)

Conversions

Conversions Part 1

Format	Color
Hex	DDB6AA
RGB	221, 182, 170
RGB Percent	87%, 71%, 67%
CMY	0.1347, 0.2875, 0.3346
CMYK	0.00, 0.18, 0.23, 0.13
HSL	14°, 43%, 77%
HSV	14°, 23%, 87%
XYZ	53.6021, 51.5317, 44.9926
YIQ	192.2930, 27.0960, 4.5360

Conversions

Conversions Part 2

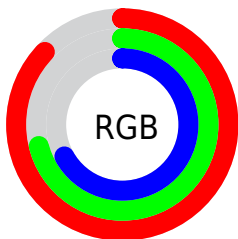
Format	Color
R _Y B	221, 186, 170
Decimal	14530218
CIE Lab	77.00, 12.23, 11.38
CIE LCh	77, 16.707, 42.923
Yxy	51.5317, 0.3570, 0.3433
Android (android.graphics.Color)	4292720298 (0xFFDDB6AA)
YUV	192.2930, -10.9904, 25.1760
Hunter-Lab	71.7856, 7.6605, 13.0891

Details

The CIELCh color $77, 16.707, 42.923$ is a light color, and the websafe version is hex `FFCCCC`. A complement of this color would be $81, 14.381, 225.028$, and the grayscale version is $78, 0.009, 296.813$.

A 20% lighter version of the original color is $95, 9.095, 66.509$, and $57, 16.596, 42.723$ is the 20% darker color. If you saturate the color by 10%, you get $72, 24.948, 42.824$, and if you desaturate by 10%, it is $82, 9.095, 43.144$.

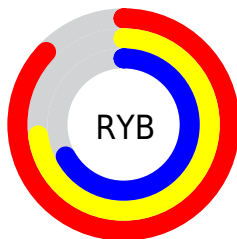
Distribution



Red (87%)

Green (71%)

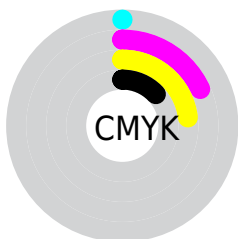
Blue (67%)



Red (87%)

Yellow (73%)

Blue (67%)

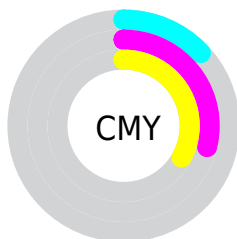


Cyan (0%)

Magenta (18%)

Yellow (23%)

Black (13%)



Cyan (13%)

Magenta (29%)

Yellow (33%)

Brightness & Saturation Gradients

These gradients show how the CIELCh color 77, 16.707, 42.923 changes by changing the brightness by 10 percent. The first figure shows a shift by +10% for each color and the second figure -10%.

Similar to the brightness gradients but the following saturation gradients show a change of the CIELCh color 77, 16.707, 42.923 by changing the saturation by 10% instead.

77, 16.707, 42.923

77, 16.707, 42.923

100, 16.707,
42.923

67, 16.707, 42.923

97, 16.707, 42.923

57, 16.707, 42.923

47, 16.707, 42.923

37, 16.707, 42.923

27, 16.707, 42.923

17, 16.707, 42.923

7, 16.707, 42.923

0, 16.707, 42.923

77, 16.707, 42.923

77, 16.707, 42.923

72, 24.948, 42.824

82, 9.095, 43.144

68, 33.849, 42.863

86, 2.068, 43.262

64, 43.400, 43.082

91, 4.433, 224.069

60, 53.515, 43.491

96, 10.000,
216.330

56, 63.969, 44.051

98, 11.589,
198.732

53, 74.226, 44.592

51, 83.109, 44.657

49, 87.937, 44.376

Harmonies

Complementary

The Complementary color scheme is a pair of colors which are on the opposite of each other on the color wheel.



77, 16.707, 42.923



81, 14.381, 225.028

Rectangle

The Rectangle color scheme consists of four colors that form a rectangle on the color wheel.



77, 16.707, 42.923



77, 16.707, 92.923



77, 16.707, 222.923



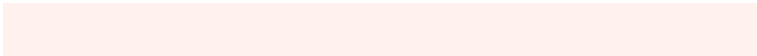
77, 16.707, 272.923

Sweetspot

The Sweet Spot groups the original color and five complimentary colors.



77, 16.706, 42.932



96, 5.332, 43.279



75, 27.988, 333.236



51, 3.473, 43.268



0, 0.000, 0.000



53, 0.007, 296.813

Same Dimension

The Same Dimension uses a secret algorithm to generate beautiful new colors.



77, 16.706, 42.932



85, 23.254, 42.861



83, 20.340, 93.262



44, 3.863, 43.231



39, 73.036, 44.825



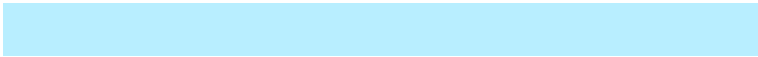
7, 20.494, 33.652

Inverse Universe

The Inverse Universe completely reimagines the original color for something new.



81, 14.381, 225.028



91, 19.274, 225.467



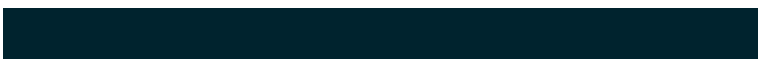
75, 20.583, 279.346



45, 3.651, 224.177



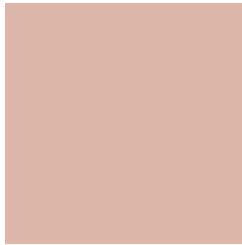
51, 33.719, 242.956



12, 13.179, 234.252

Previews

White Background



This preview shows how the CIELCh color 77, 16.707, 42.923 looks on a white background.

Color Contrast Check

Large Text (above 18pt) WCAG AA × Fail

Any Text WCAG AA × Fail

Large Text (above 18pt) WCAG AAA × Fail

Any Text WCAG AAA × Fail

Black Background



This preview shows how the CIELCh color 77, 16.707, 42.923 looks on a black background.

Color Contrast Check

Large Text (above 18pt) WCAG AA ✓ Pass

Any Text WCAG AA ✓ Pass

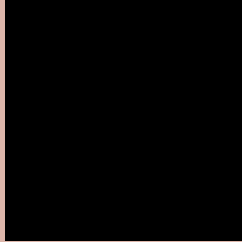
Large Text (above 18pt) WCAG AAA ✓ Pass

Any Text WCAG AAA ✓ Pass

If you want to check with other color combinations, try the [Color Contrast Checker](#).

CIELCh 77, 16.707, 42.923

Background



This preview shows how black text looks on a background with the CIELCh color 77, 16.707, 42.923.



This preview shows how white text looks on a background with the CIELCh color 77, 16.707, 42.923.

Color Blindness Simulation

Color vision deficiency is a very complex topic, and I could not describe the different causes any better than Wikipedia does, so if you want to learn more, you should check out their [article about color blindness](#).

Dichromacy



Original Color


77, 16.707, 42.923

Protanopia

77, 9.073, 89.597

Deuteranopia

77, 15.042, 49.940



Tritanopia
77, 18.504, 357.239

Trichromacy



Original Color
77, 16.707, 42.923

Protanomaly
77, 10.907, 66.907

Deuteranomaly
77, 15.749, 48.526

Tritanomaly
77, 16.656, 11.632

Monochromacy



Original Color
77, 16.707, 42.923

Achromatopsia
78, 0.009, 296.813

Achromatomaly
77, 5.693, 41.729

CSS Examples

Text

The CSS property to change the color of the text to CIELCh 77, 16.707, 42.923 is called "color". The color property can be set on classes, ids or directly on the HTML element.

This example shows how text in the color `rgb(221, 182, 170)` looks like.

```
.text, #text, p{  
    color:rgb(221, 182, 170)  
}
```

If you want to add a text shadow in that color use the text-shadow property, you can generate a text shadow directly with our [CSS Text Shadow Generator](#).

Here you see how black text with a 4 pixel rgb(221, 182, 170) colored shadow looks like.

```
.shadow{ text-shadow: 4px 4px 2px rgb(221, 182, 170) }
```

Border

The CSS property to change the border of an element to CIELCh 77, 16.707, 42.923 is called "border". The border property can be set on classes, ids or directly on the HTML element.

This example shows the color as border, it can be applied via the CSS property "border" or "border-color".

```
.border, #border, table{ border:4px solid rgb(221, 182, 170) }
```

If only the border color should be changed use the property `border-color`.

```
.border{ border-color:rgb(221, 182, 170) }
```

If you want to add a box shadow in that color use:

Here you see how a box with a 4 pixel `rgb(221, 182, 170)` colored shadow looks like.

```
.boxshadow{ -moz-box-shadow:4px 4px 4px  
4px rgb(221, 182, 170); -webkit-box-  
shadow:4px 4px 4px 4px rgb(221, 182, 170);  
box-shadow:4px 4px 4px 4px rgb(221, 182,  
170) }
```

Background

The CSS property to change the background color of an element to CIELCh 77, 16.707, 42.923 is called "background". The background property can be set on classes, ids or directly on the HTML element.

```
.background, #background, body{  
background: rgb(221, 182, 170) }
```

If only the background color should be changed can be used:

```
.background{ background-color: rgb(221,  
182, 170) }
```

This example shows the color as background, it is applied via the CSS property "background".

To optimize and compress your CSS code, you can use our [online CSS compressor and optimizer](#) based on csstidy. If you want to create a linear or radial gradient as background or border, check our [CSS Gradient Generator](#).

Hey! You found this booklet interesting? Support Converting Colors with the new Membership Option!

The pro membership hides all ads, plus gives you double the colors in the color bucket, and more awesome pro features!

[Learn more, Memberships starting at \\$2.50/m!](#)

**Follow me
on Twitter!**

@ConvertingColor