

Converting Colors

CIELCh(77, 17.744, 3.961)

Have a look what the booklet for
CIELCh(77, 17.744, 3.961) contains.

CIELCh(77, 17.368, 4.895)	3
<i>Conversions</i>	4
<i>Details</i>	6
<i>Harmonies</i>	11
<i>Previews</i>	20
<i>Color Blindness Simulation</i>	23
<i>CSS Examples</i>	26

Color

CIELCh(77, 17.368, 4.895)

Conversions

Conversions Part 1

Format	Color
Hex	DFB3BC
RGB	223, 179, 188
RGB Percent	87%, 70%, 74%
CMY	0.1257, 0.2982, 0.2629
CMYK	0.00, 0.20, 0.16, 0.13
HSL	348°, 41%, 79%
HSV	348°, 20%, 87%
XYZ	55.6003, 51.5317, 54.5679
YIQ	193.1820, 23.3350, 12.1270

Conversions

Conversions Part 2

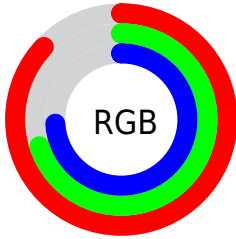
Format	Color
R _Y B	223, 179, 188
Decimal	14660540
CIE Lab	77.00, 17.30, 1.48
CIE LCh	77, 17.368, 4.895
Yxy	51.5317, 0.3438, 0.3187
Android (android.graphics.Color)	4292850620 (0xFFDFB3BC)
YUV	193.1820, -2.5547, 26.1504
Hunter-Lab	71.7856, 12.6291, 5.1806

Details

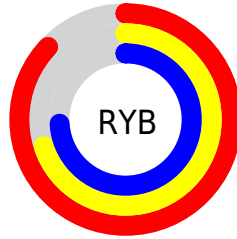
The CIELCh color **77, 17.368, 4.895** is a light color, and the websafe version is hex **FFCCCC**. A complement of this color would be **86, 16.051, 181.133**, and the grayscale version is **78, 0.009, 296.813**.

A 20% lighter version of the original color is **95, 8.502, 347.064**, and **57, 17.327, 4.325** is the 20% darker color. If you saturate the color by 10%, you get **71, 26.765, 6.230**, and if you desaturate by 10%, it is **83, 8.350, 3.762**.

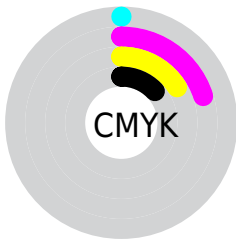
Distribution



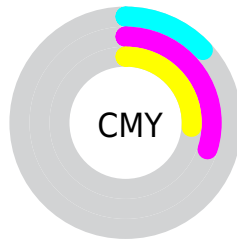
- Red (87%)
- Green (70%)
- Blue (74%)



- Red (87%)
- Yellow (70%)
- Blue (74%)



- Cyan (0%)
- Magenta (20%)
- Yellow (16%)
- Black (13%)



- Cyan (13%)
- Magenta (30%)
- Yellow (26%)

Brightness & Saturation Gradients

These gradients show how the CIELCh color 77, 17.368, 4.895 changes by changing the brightness by 10 percent. The first figure shows a shift by +10% for each color and the second figure -10%.

Similar to the brightness gradients but the following saturation gradients show a change of the CIELCh color 77, 17.368, 4.895 by changing the saturation by 10% instead.

 77, 17.368, 4.895  77, 17.368, 4.895

 100, 17.368, 4.895  67, 17.368, 4.895

 97, 17.368, 4.895  57, 17.368, 4.895

 47, 17.368, 4.895

 37, 17.368, 4.895

 27, 17.368, 4.895

 17, 17.368, 4.895

 7, 17.368, 4.895

 0, 17.368, 4.895

 77, 17.368, 4.895  77, 17.368, 4.895

71, 26.765, 6.230

83, 8.350, 3.762

66, 36.418, 7.843

89, 0.220, 185.399

61, 46.099, 9.842

95, 8.331, 182.142

56, 55.485, 12.360

98, 10.842,
198.782

53, 64.191, 15.553

50, 71.884, 19.560

48, 78.431, 24.407

47, 84.100, 29.711

47, 84.254, 29.844

Harmonies

Complementary

The Complementary color scheme is a pair of colors which are on the opposite of each other on the color wheel.



77, 17.368, 4.895



86, 16.051, 181.133

Rectangle

The Rectangle color scheme consists of four colors that form a rectangle on the color wheel.



77, 17.368, 4.895



77, 17.368, 54.895



77, 17.368, 184.895



77, 17.368, 234.895

Sweetspot

The Sweet Spot groups the original color and five complimentary colors.



77, 17.366, 4.900



96, 5.686, 3.358



77, 26.652, 319.172



51, 3.778, 3.432



0, 0.000, 0.000



53, 0.007, 296.813

Same Dimension

The Same Dimension uses a secret algorithm to generate beautiful new colors.



77, 17.366, 4.900



84, 23.802, 5.463



80, 13.940, 48.379



44, 4.894, 3.732



37, 70.021, 28.901



6, 25.280, 12.281

Inverse Universe

The Inverse Universe completely reimagines the original color for something new.



77, 17.366, 4.900



84, 23.802, 5.463



83, 12.397, 231.085



44, 4.894, 3.732



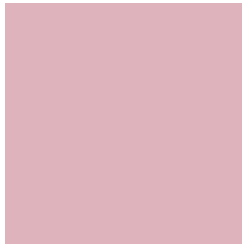
37, 70.021, 28.901



6, 25.280, 12.281

Previews

White Background



This preview shows how the CIELCh color 77, 17.368, 4.895 looks on a white background.

Color Contrast Check

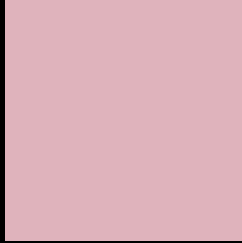
Large Text (above 18pt) WCAG AA × Fail

Any Text WCAG AA × Fail

Large Text (above 18pt) WCAG AAA × Fail

Any Text WCAG AAA × Fail

Black Background



This preview shows how the CIELCh color 77, 17.368, 4.895 looks on a black background.

Color Contrast Check

Large Text (above 18pt) WCAG AA ✓ Pass

Any Text WCAG AA ✓ Pass

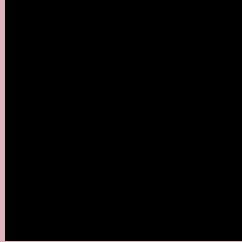
Large Text (above 18pt) WCAG AAA ✓ Pass

Any Text WCAG AAA ✓ Pass

If you want to check with other color combinations, try the [Color Contrast Checker](#).

CIELCh 77, 17.368, 4.895

Background



This preview shows how black text looks on a background with the CIELCh color 77, 17.368, 4.895.




This preview shows how white text looks on a background with the CIELCh color 77, 17.368, 4.895.

Color Blindness Simulation

Color vision deficiency is a very complex topic, and I could not describe the different causes any better than Wikipedia does, so if you want to learn more, you should check out their [article about color blindness](#).

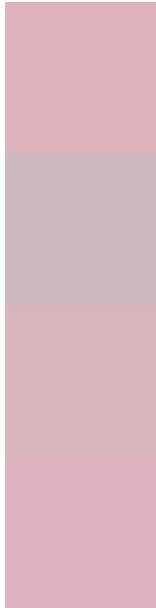
Dichromacy





Tritanopia
77, 18.504, 357.239

Trichromacy



Original Color
77, 17.368, 4.895

Protanomaly
77, 8.030, 352.200

Deuteranomaly
77, 12.786, 8.430

Tritanomaly
77, 18.325, 358.792

Monochromacy



Original Color
77, 17.368, 4.895

Achromatopsia
78, 0.009, 296.813

Achromatomaly
78, 6.193, 4.843

CSS Examples

Text

The CSS property to change the color of the text to CIELCh 77, 17.368, 4.895 is called "color". The color property can be set on classes, ids or directly on the HTML element.

This example shows how text in the color `rgb(223, 179, 188)` looks like.

```
.text, #text, p{  
    color:rgb(223, 179, 188)  
}
```

If you want to add a text shadow in that color use the text-shadow property, you can generate a text shadow directly with our [CSS Text Shadow Generator](#).

Here you see how black text with a 4 pixel rgb(223, 179, 188) colored shadow looks like.

```
.shadow{ text-shadow: 4px 4px 2px rgb(223, 179, 188) }
```

Border

The CSS property to change the border of an element to CIELCh 77, 17.368, 4.895 is called "border". The border property can be set on classes, ids or directly on the HTML element.

This example shows the color as border, it can be applied via the CSS property "border" or "border-color".

```
.border, #border, table{ border:4px solid rgb(223, 179, 188) }
```

If only the border color should be changed use the property `border-color`.

```
.border{ border-color:rgb(223, 179, 188) }
```

If you want to add a box shadow in that color use:

Here you see how a box with a 4 pixel `rgb(223, 179, 188)` colored shadow looks like.

```
.boxshadow{ -moz-box-shadow:4px 4px 4px  
4px rgb(223, 179, 188); -webkit-box-  
shadow:4px 4px 4px 4px rgb(223, 179, 188);  
box-shadow:4px 4px 4px 4px rgb(223, 179,  
188) }
```

Background

The CSS property to change the background color of an element to CIELCh 77, 17.368, 4.895 is called "background". The background property can be set on classes, ids or directly on the HTML element.

```
.background, #background, body{  
background: rgb(223, 179, 188) }
```

If only the background color should be changed can be used:

```
.background{ background-color: rgb(223,  
179, 188) }
```

This example shows the color as background, it is applied via the CSS property "background".

To optimize and compress your CSS code, you can use our [online CSS compressor and optimizer](#) based on csstidy. If you want to create a linear or radial gradient as background or border, check our [CSS Gradient Generator](#).

Hey! You found this booklet interesting? Support Converting Colors with the new Membership Option!

The pro membership hides all ads, plus gives you double the colors in the color bucket, and more awesome pro features!

[Learn more, Memberships starting at \\$2.50/m!](#)

**Follow me
on Twitter!**

@ConvertingColor